

Data Path : Z:\pestpcbsrv\HPCHEM1\FID_E\Data\FE100923AL\
 Data File : FE044731.D
 Signal(s) : FID1B.ch
 Acq On : 09 Oct 2023 15:47
 Operator : YP\AJ
 Sample : PB156208BS
 Misc :
 ALS Vial : 8 Sample Multiplier: 1

Instrument :

FID_E

ClientSampleId :

PB156208BS

Manual Integrations

APPROVED

Reviewed By :Yogesh Patel 10/10/2023

Supervised By :Ankita Jodhani 10/10/2023

Integration File: autoint1.e
 Quant Time: Oct 09 23:44:40 2023
 Quant Method : Z:\pestpcbsrv\HPCHEM1\FID_E\methods\Aliphatic EPH 092523.M
 Quant Title : GC Extractables
 QLast Update : Mon Sep 25 11:06:21 2023
 Response via : Initial Calibration
 Integrator: ChemStation

Volume Inj. : 1 ul
 Signal Phase : Rxi-1ms
 Signal Info : 20M x 0.18mm x 0.18um

Compound	R.T.	Response	Conc Units
System Monitoring Compounds			
9) S ortho-Terphenyl (SURR)	11.921	11291096	60.143 ug/ml
Spiked Amount	50.000	Recovery	= 120.29%
12) S 1-chlorooctadecane (S...	13.359	8881778	65.286 ug/ml
Spiked Amount	50.000	Recovery	= 130.57%
Target Compounds			
1) T n-Nonane (C9)	3.307	5739595	35.353 ug/ml
2) T n-Decane (C10)	4.555	6299543	38.043 ug/ml
3) T A~Naphthalene (C11.7)	6.253	7402631	41.405 ug/ml
4) T n-Dodecane (C12)	6.718	7085262	42.597 ug/ml
5) T A~2-methylnaphthalene...	7.349	7720808	45.128 ug/ml
6) T n-Tetradecane (C14)	8.547	8055956	49.072 ug/ml
7) T n-Hexadecane (C16)	10.155	8752669	51.667 ug/ml
8) T n-Octadecane (C18)	11.603	8941372	52.662 ug/ml
10) T n-Eicosane (C20)	12.915	8949015	55.622 ug/ml
11) T n-Heneicosane (C21)	13.528	8571078	54.737 ug/ml
13) T n-Docosane (C22)	14.115	8461490	54.862 ug/ml
14) T n-Tetracosane (C24)	15.202	16207166	107.214 ug/ml
15) T n-Hexacosane (C26)	16.246	7995911	54.359 ug/ml
16) T n-Octacosane (C28)	17.195	7891676	55.024 ug/ml
17) T n-Tricontane (C30)	18.087	7751336	52.291 ug/ml
18) T n-Dotriacontane (C32)	18.919	7545153	50.968 ug/ml
19) T n-Tetratriacontane (C34)	19.704	7399012	50.629 ug/ml
20) T n-Hexatriacontane (C36)	20.446	6803227	46.902 ug/ml
21) T n-Octatriacontane (C38)	21.187	6564865	43.827 ug/ml
22) T n-Tetracontane (C40)	22.112	6276976	39.775 ug/ml

(f)=RT Delta > 1/2 Window

(m)=manual int.

Data Path : Z:\pestpcbsrv\HPCHEM1\FID_E\Data\FE100923AL\
 Data File : FE044731.D
 Signal(s) : FID1B.ch
 Acq On : 09 Oct 2023 15:47
 Operator : YP\AJ
 Sample : PB156208BS
 Misc :
 ALS Vial : 8 Sample Multiplier: 1

Instrument :

FID_E

ClientSampleId :

PB156208BS

Manual Integrations

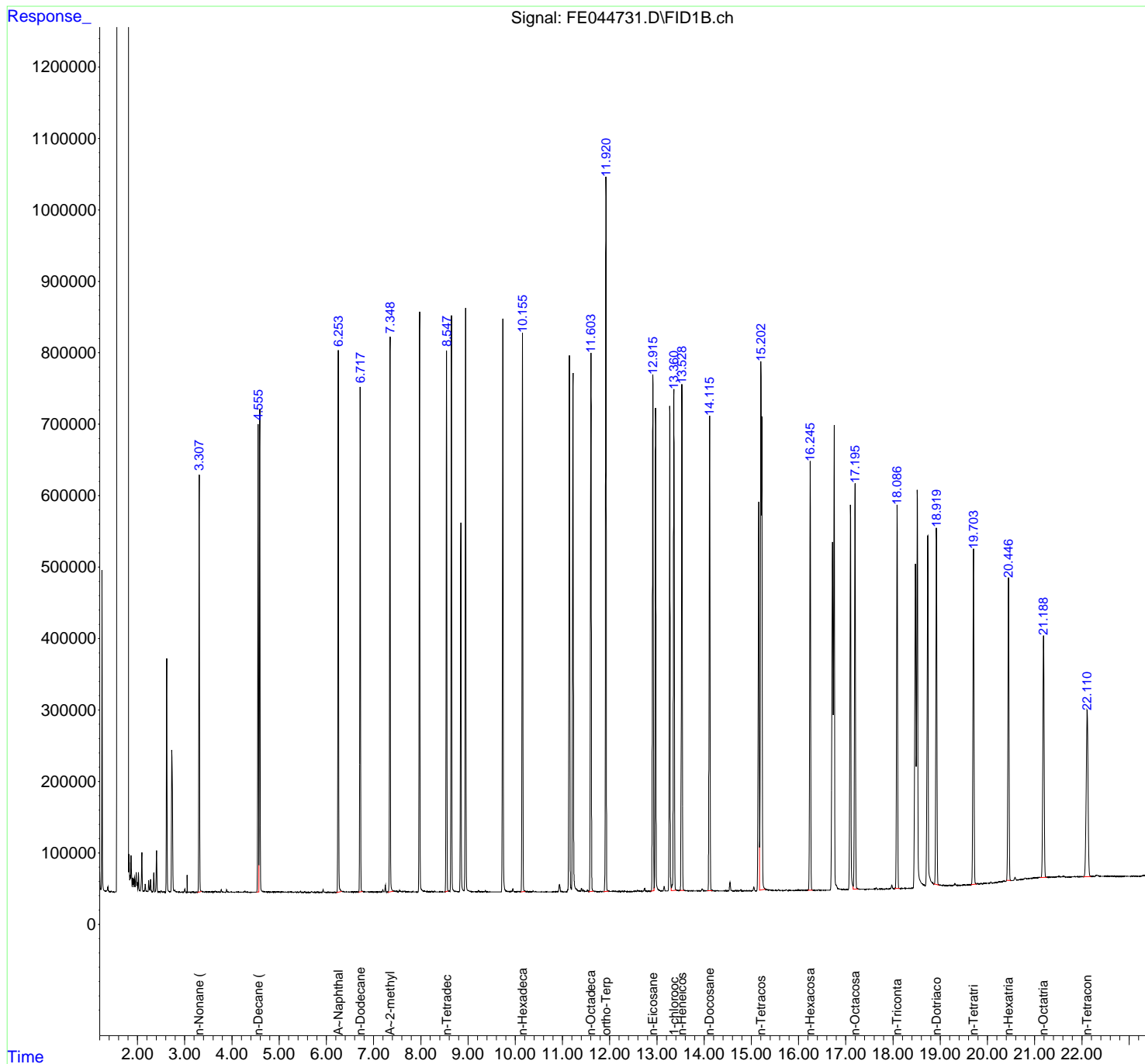
APPROVED

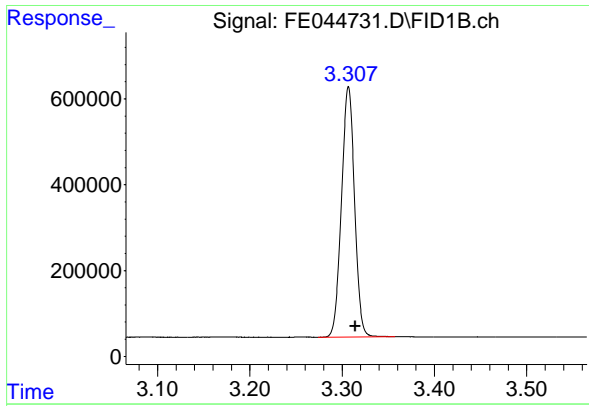
Reviewed By :Yogesh Patel 10/10/2023

Supervised By :Ankita Jodhani 10/10/2023

Integration File: autoint1.e
 Quant Time: Oct 09 23:44:40 2023
 Quant Method : Z:\pestpcbsrv\HPCHEM1\FID_E\methods\Aliphatic EPH 092523.
 Quant Title : GC Extractables
 QLast Update : Mon Sep 25 11:06:21 2023
 Response via : Initial Calibration
 Integrator: ChemStation

Volume Inj. : 1 ul
 Signal Phase : Rxi-1ms
 Signal Info : 20M x 0.18mm x 0.18um





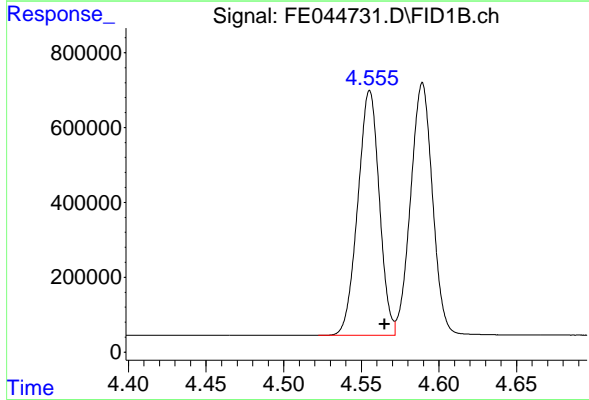
#1 n-Nonane (C9)

R.T.: 3.307 min
 Delta R.T.: -0.007 min
 Response: 5739595
 Conc: 35.35 ug/ml

Instrument : FID_E
 ClientSampleId : PB156208BS

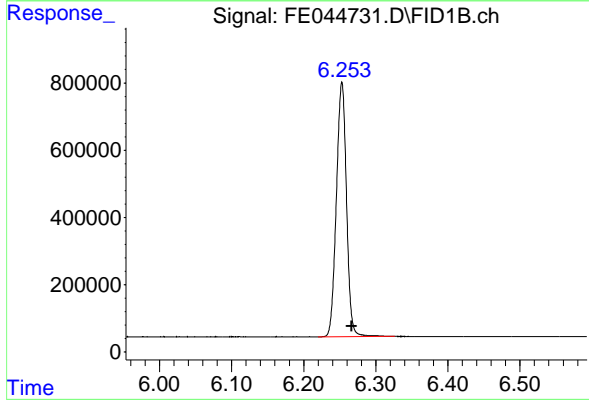
Manual Integrations
 APPROVED

Reviewed By :Yogesh Patel 10/10/2023
 Supervised By :Ankita Jodhani 10/10/2023



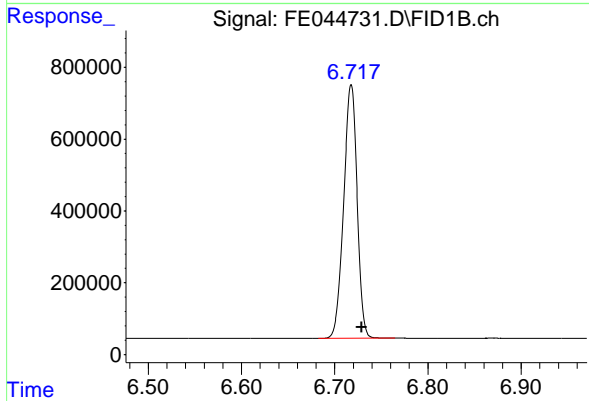
#2 n-Decane (C10)

R.T.: 4.555 min
 Delta R.T.: -0.010 min
 Response: 6299543
 Conc: 38.04 ug/ml



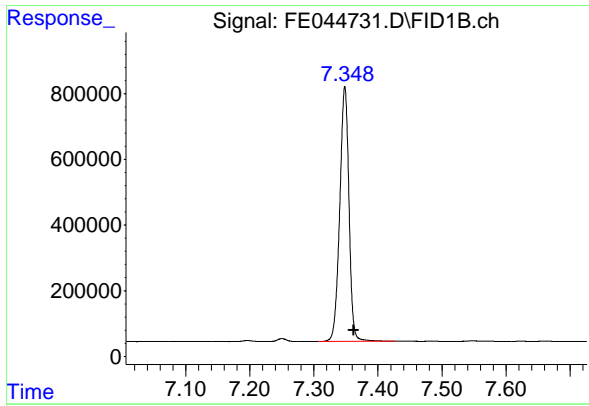
#3 A~Naphthalene (C11.7)

R.T.: 6.253 min
 Delta R.T.: -0.014 min
 Response: 7402631
 Conc: 41.40 ug/ml



#4 n-Dodecane (C12)

R.T.: 6.718 min
 Delta R.T.: -0.011 min
 Response: 7085262
 Conc: 42.60 ug/ml



#5 A~2-methylnaphthalene (C12.89)

R.T.: 7.349 min
 Delta R.T.: -0.013 min
 Response: 7720808
 Conc: 45.13 ug/ml

Instrument :

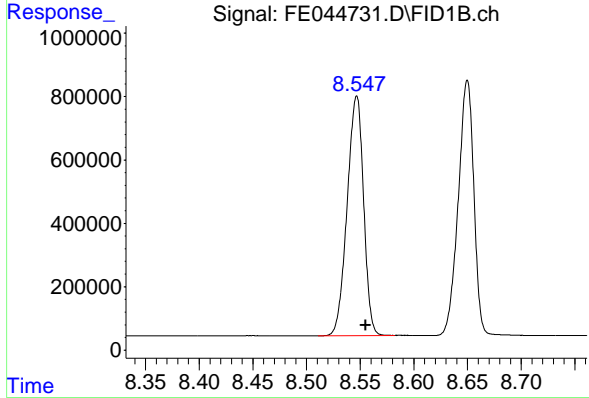
FID_E

Client Sample Id :

PB156208BS

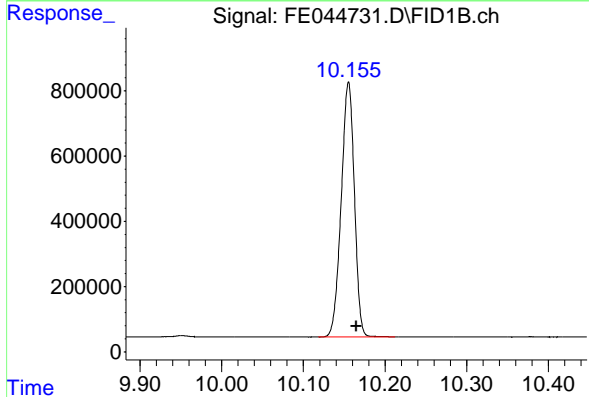
Manual Integrations
 APPROVED

Reviewed By :Yogesh Patel 10/10/2023
 Supervised By :Ankita Jodhani 10/10/2023



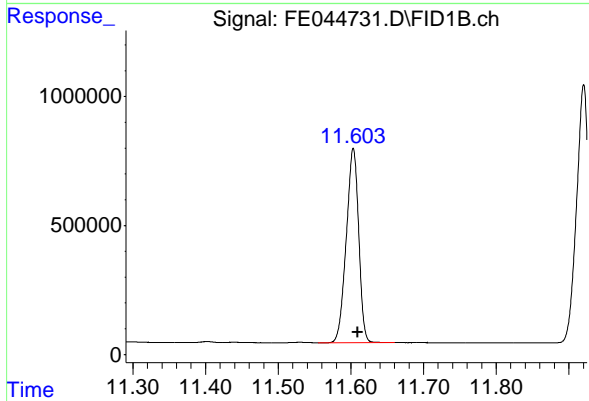
#6 n-Tetradecane (C14)

R.T.: 8.547 min
 Delta R.T.: -0.008 min
 Response: 8055956
 Conc: 49.07 ug/ml



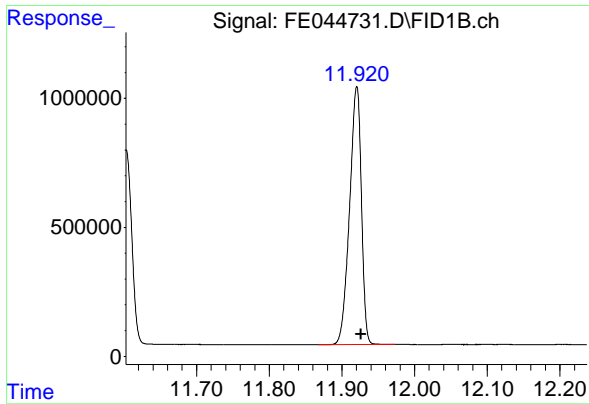
#7 n-Hexadecane (C16)

R.T.: 10.155 min
 Delta R.T.: -0.009 min
 Response: 8752669
 Conc: 51.67 ug/ml



#8 n-Octadecane (C18)

R.T.: 11.603 min
 Delta R.T.: -0.006 min
 Response: 8941372
 Conc: 52.66 ug/ml



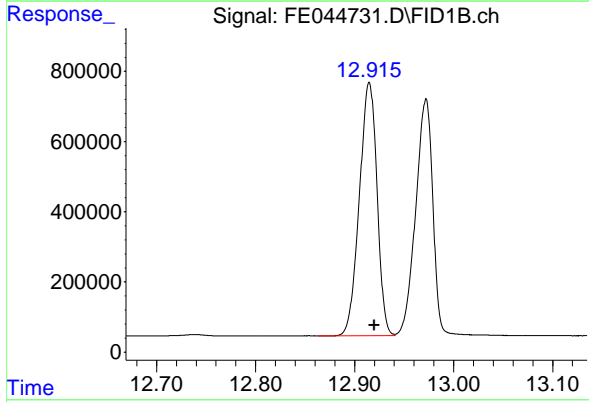
#9 ortho-Terphenyl (SURR)

R.T.: 11.921 min
 Delta R.T.: -0.006 min
 Response: 11291096
 Conc: 60.14 ug/ml

Instrument : FID_E
 Client Sample Id : PB156208BS

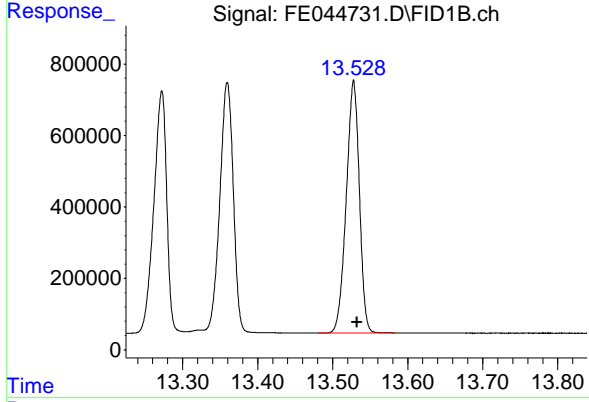
Manual Integrations
 APPROVED

Reviewed By :Yogesh Patel 10/10/2023
 Supervised By :Ankita Jodhani 10/10/2023



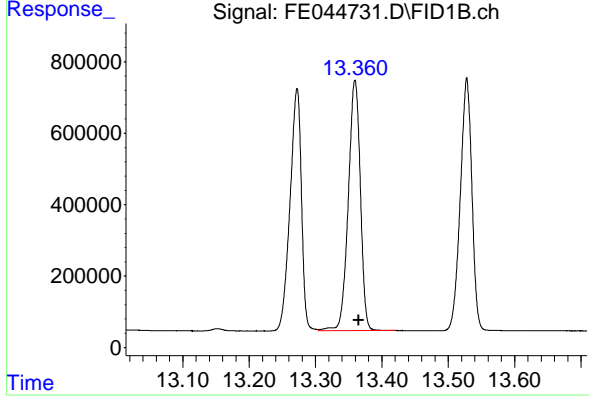
#10 n-Eicosane (C20)

R.T.: 12.915 min
 Delta R.T.: -0.005 min
 Response: 8949015
 Conc: 55.62 ug/ml



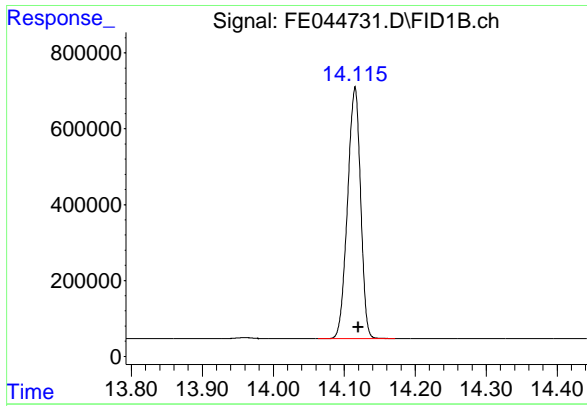
#11 n-Heneicosane (C21)

R.T.: 13.528 min
 Delta R.T.: -0.005 min
 Response: 8571078
 Conc: 54.74 ug/ml



#12 1-chlorooctadecane (SURR)

R.T.: 13.359 min
 Delta R.T.: -0.006 min
 Response: 8881778
 Conc: 65.29 ug/ml



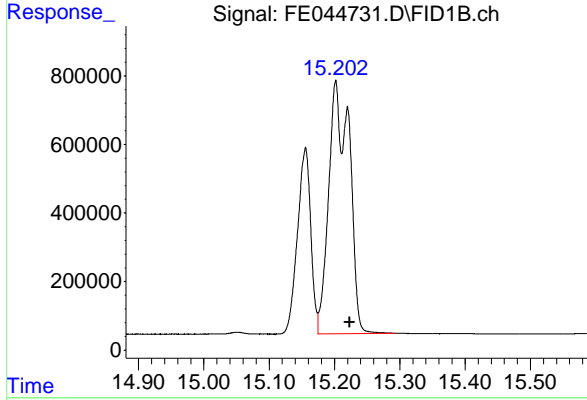
#13 n-Docosane (C22)

R.T.: 14.115 min
 Delta R.T.: -0.005 min
 Response: 8461490
 Conc: 54.86 ug/ml

Instrument : FID_E
 Client Sample Id : PB156208BS

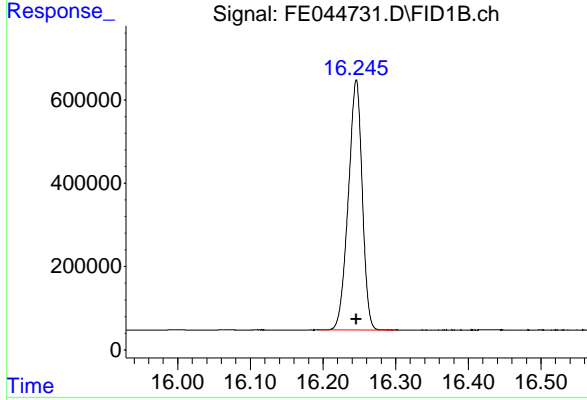
Manual Integrations
 APPROVED

Reviewed By :Yogesh Patel 10/10/2023
 Supervised By :Ankita Jodhani 10/10/2023



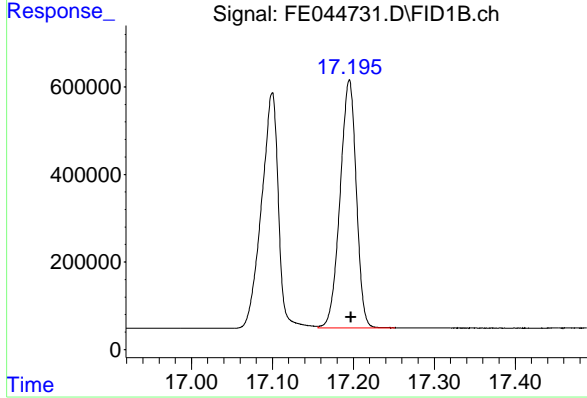
#14 n-Tetracosane (C24)

R.T.: 15.202 min
 Delta R.T.: -0.021 min
 Response: 16207166
 Conc: 107.21 ug/ml m



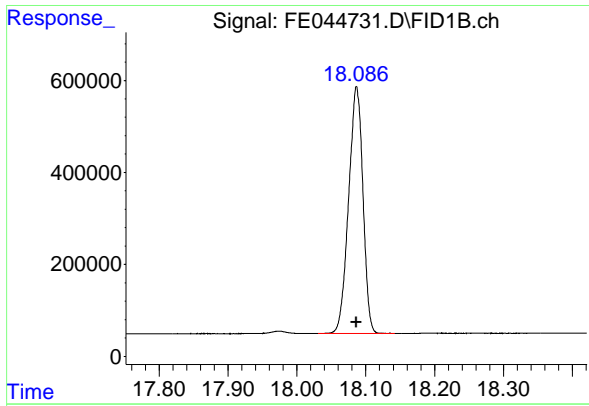
#15 n-Hexacosane (C26)

R.T.: 16.246 min
 Delta R.T.: 0.000 min
 Response: 7995911
 Conc: 54.36 ug/ml



#16 n-Octacosane (C28)

R.T.: 17.195 min
 Delta R.T.: -0.002 min
 Response: 7891676
 Conc: 55.02 ug/ml



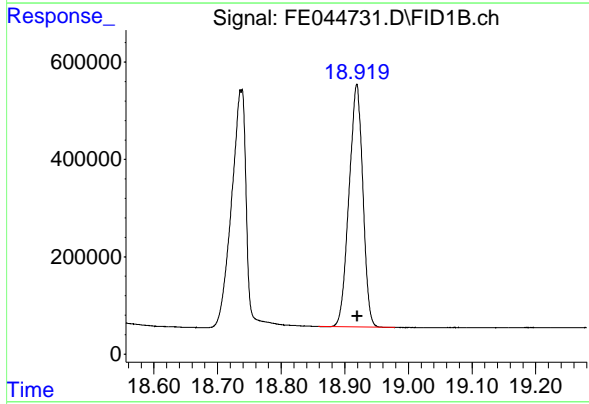
#17 n-Tricontane (C30)

R.T.: 18.087 min
 Delta R.T.: 0.000 min
 Response: 7751336
 Conc: 52.29 ug/ml

Instrument : FID_E
 Client Sample Id : PB156208BS

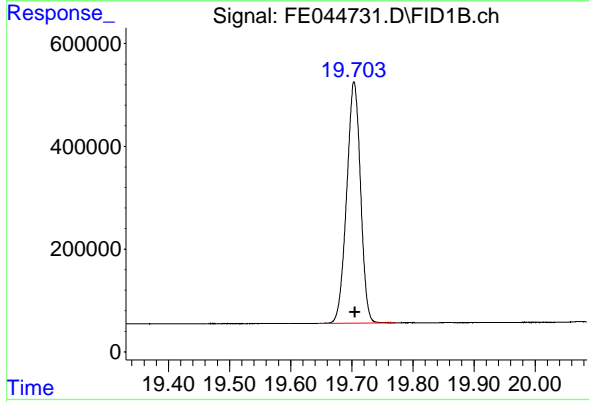
Manual Integrations
 APPROVED

Reviewed By :Yogesh Patel 10/10/2023
 Supervised By :Ankita Jodhani 10/10/2023



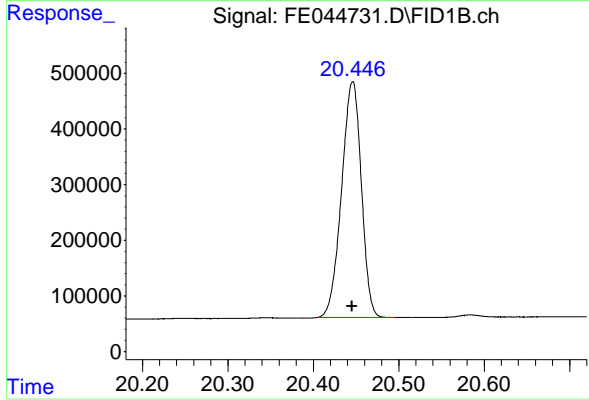
#18 n-Dotriacontane (C32)

R.T.: 18.919 min
 Delta R.T.: 0.000 min
 Response: 7545153
 Conc: 50.97 ug/ml



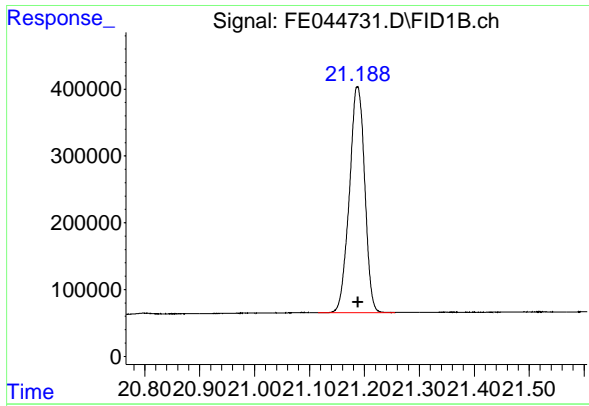
#19 n-Tetraatriacontane (C34)

R.T.: 19.704 min
 Delta R.T.: -0.001 min
 Response: 7399012
 Conc: 50.63 ug/ml



#20 n-Hexatriacontane (C36)

R.T.: 20.446 min
 Delta R.T.: 0.000 min
 Response: 6803227
 Conc: 46.90 ug/ml



#21 n-Octatriacontane (C38)

R.T.: 21.187 min
 Delta R.T.: -0.001 min
 Response: 6564865
 Conc: 43.83 ug/ml

Instrument :

FID_E

ClientSampleId :

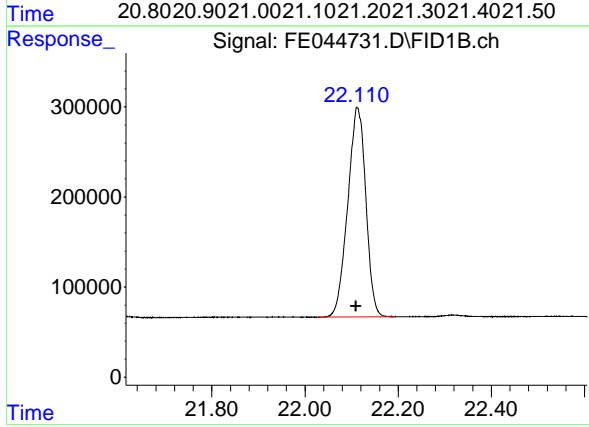
PB156208BS

Manual Integrations

APPROVED

Reviewed By :Yogesh Patel 10/10/2023

Supervised By :Ankita Jodhani 10/10/2023



#22 n-Tetracontane (C40)

R.T.: 22.112 min
 Delta R.T.: 0.003 min
 Response: 6276976
 Conc: 39.78 ug/ml