

Data Path : Z:\pestpcbsrv\HPCHEM1\FID_E\Data\FE101023AL\
 Data File : FE044770.D
 Signal(s) : FID1B.ch
 Acq On : 11 Oct 2023 08:48
 Operator : YP\AJ
 Sample : 04817-02
 Misc :
 ALS Vial : 13 Sample Multiplier: 1

Instrument :
 FID_E
 ClientSampleId :

Integration File: autoint1.e
 Quant Time: Oct 11 11:10:14 2023
 Quant Method : Z:\pestpcbsrv\HPCHEM1\FID_E\methods\Aliphatic EPH 092523.M
 Quant Title : GC Extractables
 QLast Update : Mon Sep 25 11:06:21 2023
 Response via : Initial Calibration
 Integrator: ChemStation

Volume Inj. : 1 ul
 Signal Phase : Rxi-1ms
 Signal Info : 20M x 0.18mm x 0.18um

Compound	R.T.	Response	Conc Units

System Monitoring Compounds			
9) S ortho-Terphenyl (SURR)	11.919	8988223	47.876 ug/ml
Spiked Amount	50.000	Recovery	= 95.75%
12) S 1-chlorooctadecane (S...	13.359	7844249	57.660 ug/ml
Spiked Amount	50.000	Recovery	= 115.32%
Target Compounds			
5) T A~2-methylnaphthalene...	7.345	44034	0.257 ug/ml
6) T n-Tetradecane (C14)	8.576	57104	0.348 ug/ml
7) T n-Hexadecane (C16)	10.160	951679	5.618 ug/ml
8) T n-Octadecane (C18)	11.576	33152	0.195 ug/ml
10) T n-Eicosane (C20)	12.914	189179	1.176 ug/ml
11) T n-Heneicosane (C21)	13.533	342539	2.188 ug/ml
13) T n-Docosane (C22)	14.132	480323	3.114 ug/ml
14) T n-Tetracosane (C24)	15.187	1007694	6.666 ug/ml
15) T n-Hexacosane (C26)	16.181f	39910	0.271 ug/ml
16) T n-Octacosane (C28)	17.190	179157	1.249 ug/ml
17) T n-Tricontane (C30)	18.078	125258	0.845 ug/ml
18) T n-Dotriacontane (C32)	18.909	124931	0.844 ug/ml
19) T n-Tetratriacontane (C34)	19.698	75825	0.519 ug/ml
20) T n-Hexatriacontane (C36)	20.439	35637	0.246 ug/ml
22) T n-Tetracontane (C40)	22.097	104981	0.665 ug/ml

(f)=RT Delta > 1/2 Window

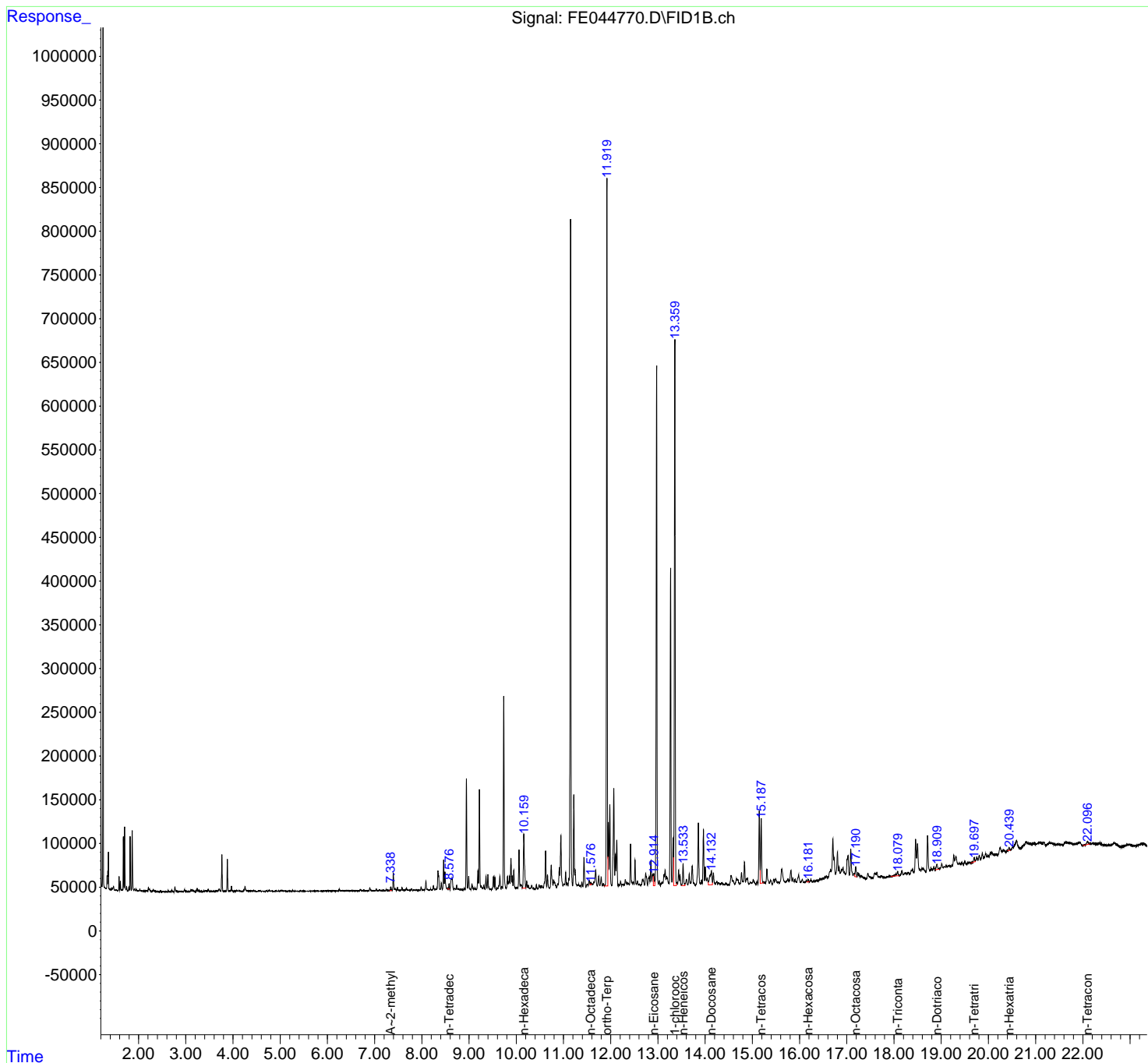
(m)=manual int.

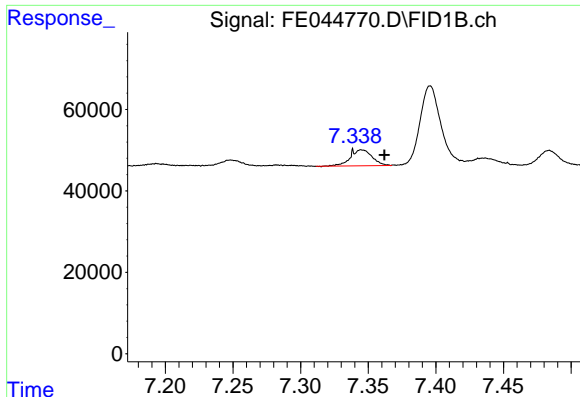
Data Path : Z:\pestpcbsrv\HPCHEM1\FID_E\Data\FE101023AL\
 Data File : FE044770.D
 Signal(s) : FID1B.ch
 Acq On : 11 Oct 2023 08:48
 Operator : YP\AJ
 Sample : 04817-02
 Misc :
 ALS Vial : 13 Sample Multiplier: 1

Instrument :
 FID_E
 ClientSampleId :

Integration File: autoint1.e
 Quant Time: Oct 11 11:10:14 2023
 Quant Method : Z:\pestpcbsrv\HPCHEM1\FID_E\methods\Aliphatic EPH 092523.M
 Quant Title : GC Extractables
 QLast Update : Mon Sep 25 11:06:21 2023
 Response via : Initial Calibration
 Integrator: ChemStation

Volume Inj. : 1 ul
 Signal Phase : Rxi-1ms
 Signal Info : 20M x 0.18mm x 0.18um

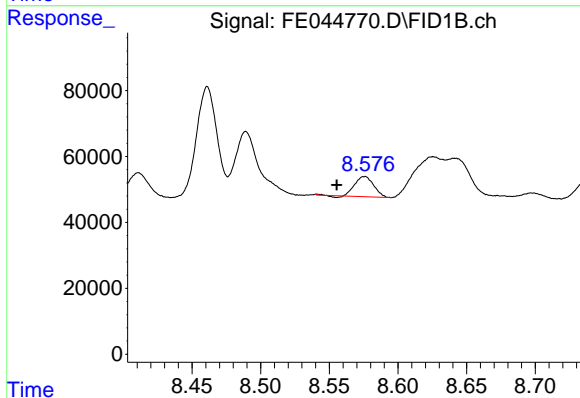




#5 A~2-methylnaphthalene (C12.89)

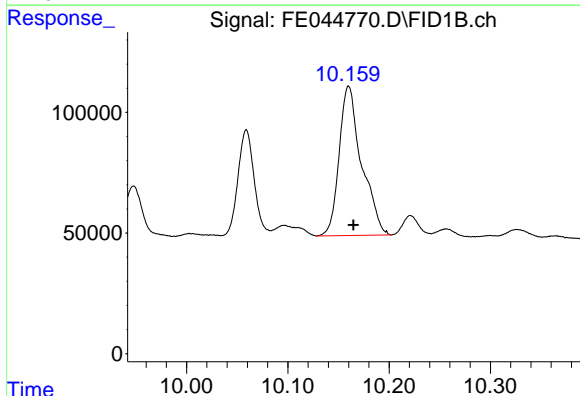
R.T.: 7.345 min
 Delta R.T.: -0.017 min
 Response: 44034
 Conc: 0.26 ug/ml

Instrument :
 FID_E
 ClientSampleId :



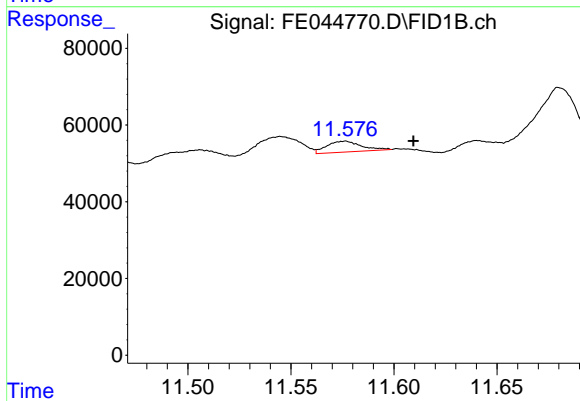
#6 n-Tetradecane (C14)

R.T.: 8.576 min
 Delta R.T.: 0.021 min
 Response: 57104
 Conc: 0.35 ug/ml



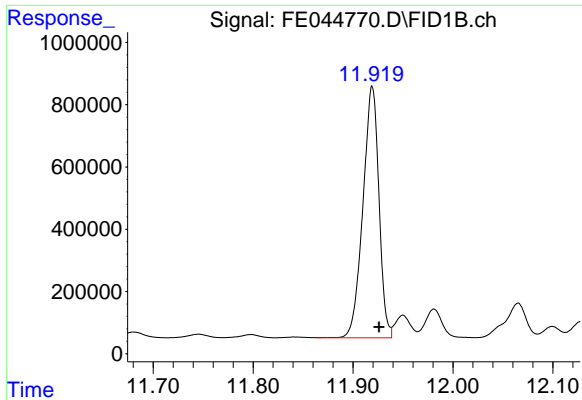
#7 n-Hexadecane (C16)

R.T.: 10.160 min
 Delta R.T.: -0.005 min
 Response: 951679
 Conc: 5.62 ug/ml



#8 n-Octadecane (C18)

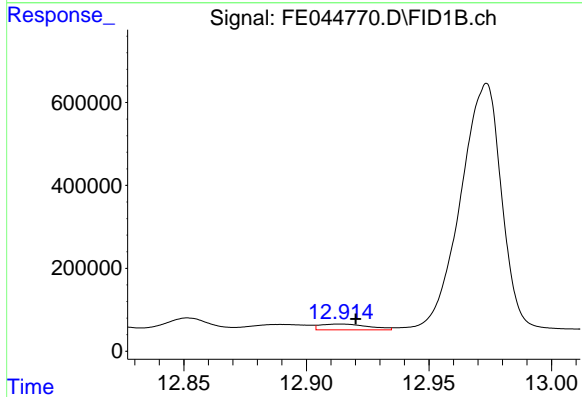
R.T.: 11.576 min
 Delta R.T.: -0.033 min
 Response: 33152
 Conc: 0.20 ug/ml



#9 ortho-Terphenyl (SURRE)

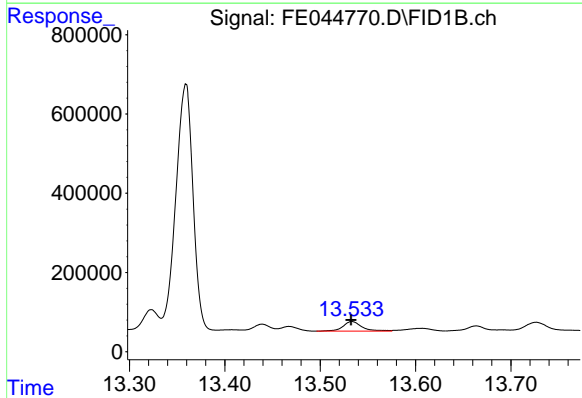
R.T.: 11.919 min
Delta R.T.: -0.007 min
Response: 8988223
Conc: 47.88 ug/ml

Instrument :
FID_E
ClientSampleId :



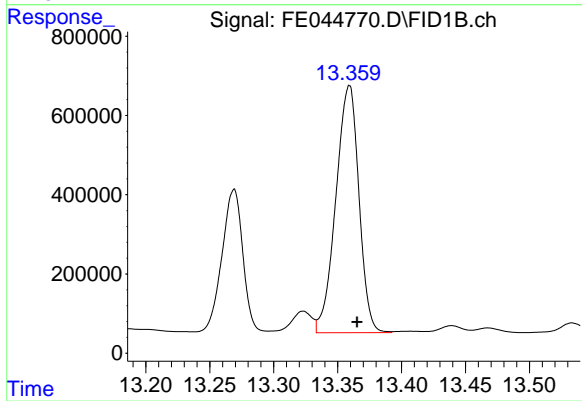
#10 n-Eicosane (C20)

R.T.: 12.914 min
Delta R.T.: -0.006 min
Response: 189179
Conc: 1.18 ug/ml



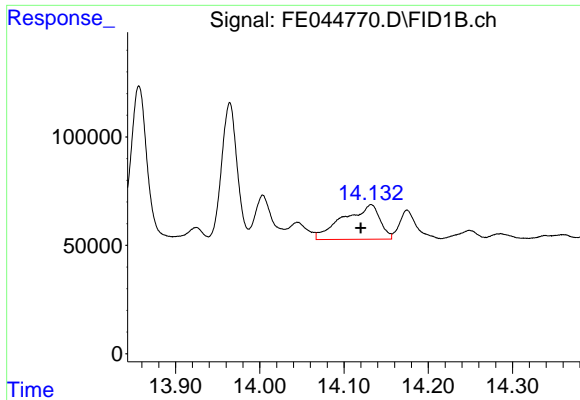
#11 n-Heneicosane (C21)

R.T.: 13.533 min
Delta R.T.: 0.000 min
Response: 342539
Conc: 2.19 ug/ml



#12 1-chlorooctadecane (SURRE)

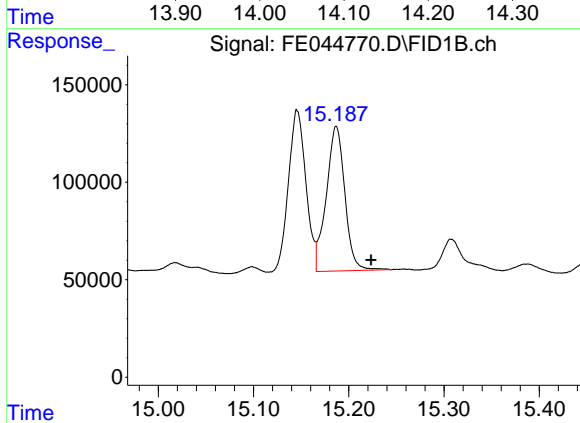
R.T.: 13.359 min
Delta R.T.: -0.006 min
Response: 7844249
Conc: 57.66 ug/ml



#13 n-Docosane (C22)

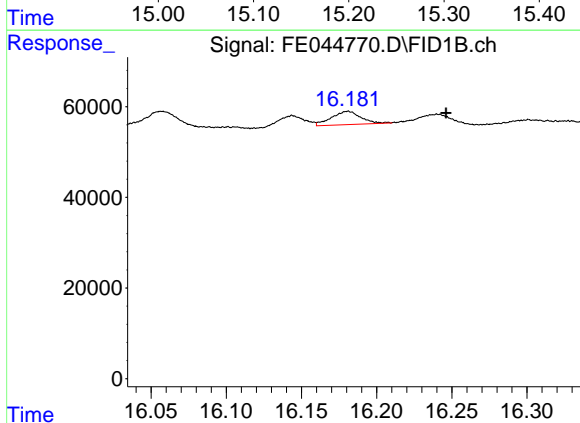
R.T.: 14.132 min
 Delta R.T.: 0.012 min
 Response: 480323
 Conc: 3.11 ug/ml

Instrument :
 FID_E
 ClientSampleId :



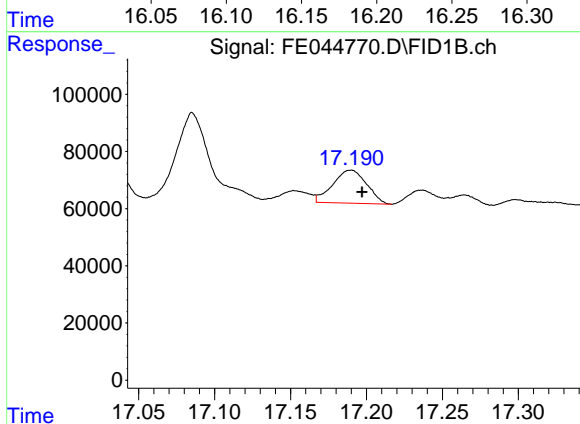
#14 n-Tetracosane (C24)

R.T.: 15.187 min
 Delta R.T.: -0.036 min
 Response: 1007694
 Conc: 6.67 ug/ml



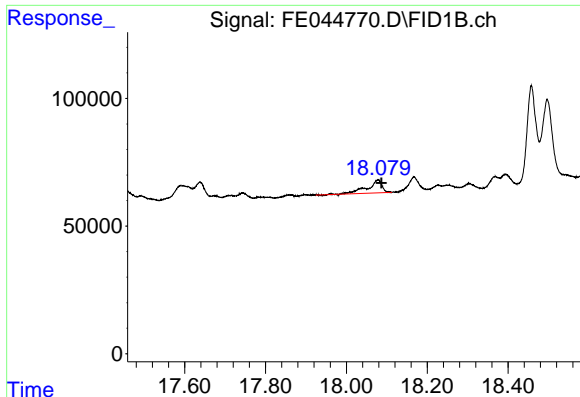
#15 n-Hexacosane (C26)

R.T.: 16.181 min
 Delta R.T.: -0.065 min
 Response: 39910
 Conc: 0.27 ug/ml



#16 n-Octacosane (C28)

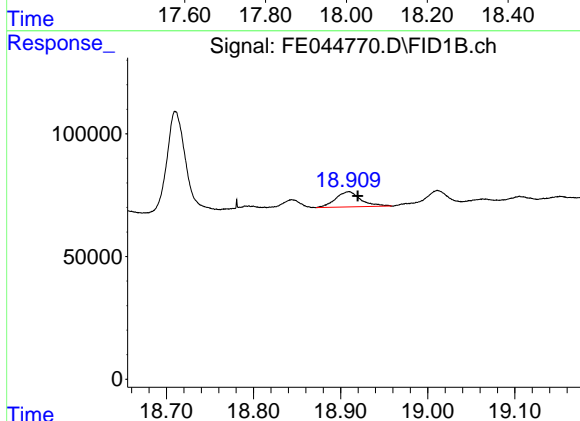
R.T.: 17.190 min
 Delta R.T.: -0.007 min
 Response: 179157
 Conc: 1.25 ug/ml



#17 n-Tricontane (C30)

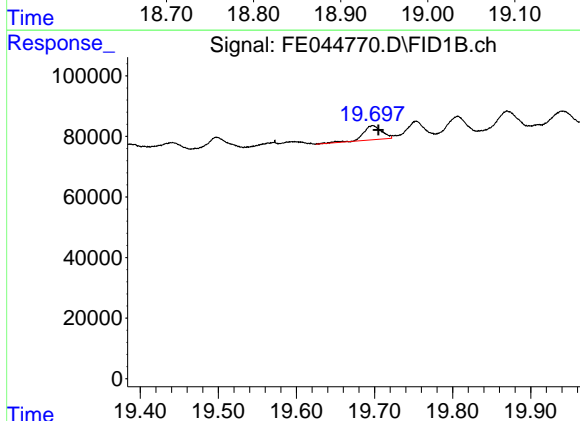
R.T.: 18.078 min
 Delta R.T.: -0.008 min
 Response: 125258
 Conc: 0.85 ug/ml

Instrument :
 FID_E
 ClientSampleId :



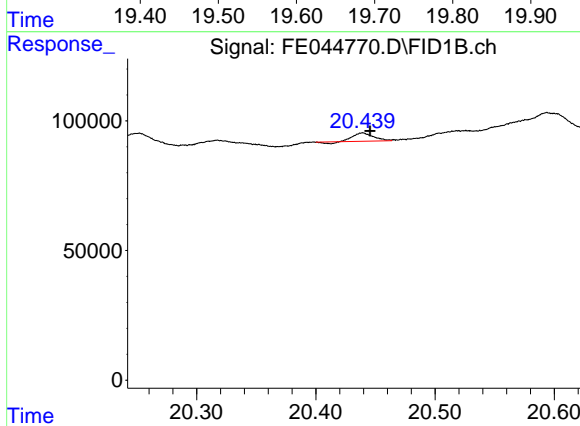
#18 n-Dotriacontane (C32)

R.T.: 18.909 min
 Delta R.T.: -0.010 min
 Response: 124931
 Conc: 0.84 ug/ml



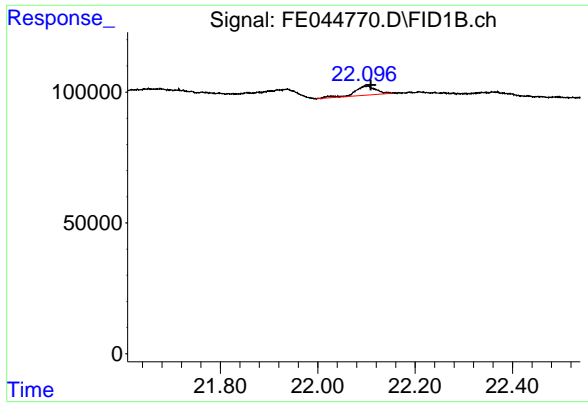
#19 n-Tetratriacontane (C34)

R.T.: 19.698 min
 Delta R.T.: -0.007 min
 Response: 75825
 Conc: 0.52 ug/ml



#20 n-Hexatriacontane (C36)

R.T.: 20.439 min
 Delta R.T.: -0.006 min
 Response: 35637
 Conc: 0.25 ug/ml



#22 n-Tetracontane (C40)

R.T.: 22.097 min
Delta R.T.: -0.012 min
Response: 104981
Conc: 0.67 ug/ml

Instrument :
FID_E
ClientSampleId :