

Data Path : Z:\pestpcbsrv\HPCHEM1\FID_E\Data\FE101123AL\
 Data File : FE044784.D
 Signal(s) : FID1B.ch
 Acq On : 11 Oct 2023 17:11
 Operator : YP\AJ
 Sample : 04830-01
 Misc :
 ALS Vial : 16 Sample Multiplier: 1

Instrument :
 FID_E
 ClientSampleId :

Integration File: autoint1.e
 Quant Time: Oct 12 00:38:50 2023
 Quant Method : Z:\pestpcbsrv\HPCHEM1\FID_E\methods\Aliphatic EPH 092523.M
 Quant Title : GC Extractables
 QLast Update : Mon Sep 25 11:06:21 2023
 Response via : Initial Calibration
 Integrator: ChemStation

Volume Inj. : 1 ul
 Signal Phase : Rxi-1ms
 Signal Info : 20M x 0.18mm x 0.18um

Compound	R.T.	Response	Conc Units

System Monitoring Compounds			
9) S ortho-Terphenyl (SURR)	11.920	8515710	45.359 ug/ml
Spiked Amount	50.000	Recovery	= 90.72%
12) S 1-chlorooctadecane (S...	13.361	6810069	50.058 ug/ml
Spiked Amount	50.000	Recovery	= 100.12%
Target Compounds			
3) T A~Naphthalene (C11.7)	6.253	34475	0.193 ug/ml
5) T A~2-methylnaphthalene...	7.348	48658	0.284 ug/ml
6) T n-Tetradecane (C14)	8.510	1018402	6.203 ug/ml
10) T n-Eicosane (C20)	12.969	1065082	6.620 ug/ml
11) T n-Heneicosane (C21)	13.537	65164	0.416 ug/ml
13) T n-Docosane (C22)	14.136	162988	1.057 ug/ml
14) T n-Tetracosane (C24)	15.188	877554	5.805 ug/ml
15) T n-Hexacosane (C26)	16.243	79892	0.543 ug/ml
16) T n-Octacosane (C28)	17.194	291564	2.033 ug/ml
17) T n-Tricontane (C30)	18.079	297596	2.008 ug/ml
18) T n-Dotriacontane (C32)	18.917	230480	1.557 ug/ml
19) T n-Tetratriacontane (C34)	19.690	61700	0.422 ug/ml
20) T n-Hexatriacontane (C36)	20.455	110662	0.763 ug/ml
21) T n-Octatriacontane (C38)	21.183	108865	0.727 ug/ml
22) T n-Tetracontane (C40)	22.044f	485412	3.076 ug/ml

(f)=RT Delta > 1/2 Window

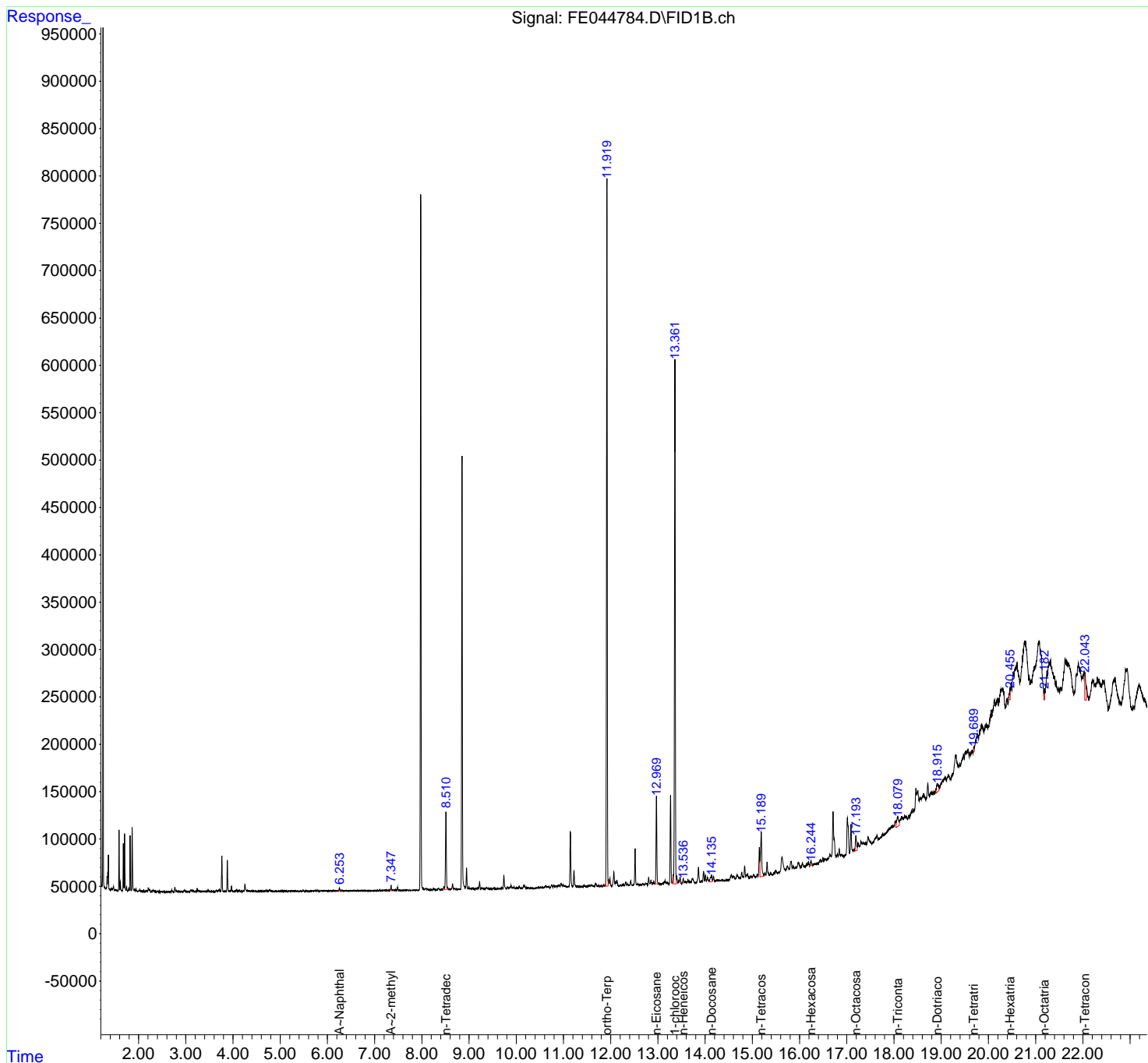
(m)=manual int.

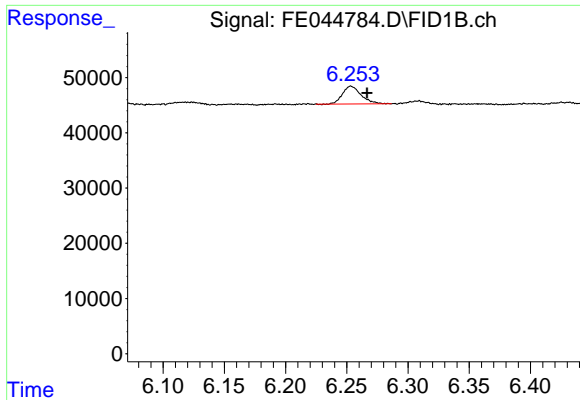
Data Path : Z:\pestpcbsrv\HPCHEM1\FID_E\Data\FE101123AL\
 Data File : FE044784.D
 Signal(s) : FID1B.ch
 Acq On : 11 Oct 2023 17:11
 Operator : YP\AJ
 Sample : 04830-01
 Misc :
 ALS Vial : 16 Sample Multiplier: 1

Instrument :
 FID_E
 ClientSampleId :

Integration File: autoint1.e
 Quant Time: Oct 12 00:38:50 2023
 Quant Method : Z:\pestpcbsrv\HPCHEM1\FID_E\methods\Aliphatic EPH 092523.M
 Quant Title : GC Extractables
 QLast Update : Mon Sep 25 11:06:21 2023
 Response via : Initial Calibration
 Integrator: ChemStation

Volume Inj. : 1 ul
 Signal Phase : Rxi-1ms
 Signal Info : 20M x 0.18mm x 0.18um

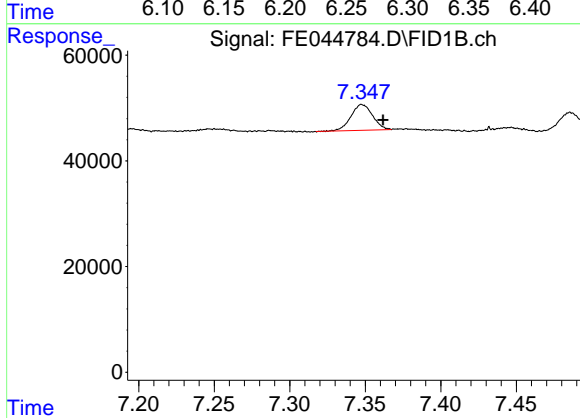




#3 A~Naphthalene (C11.7)

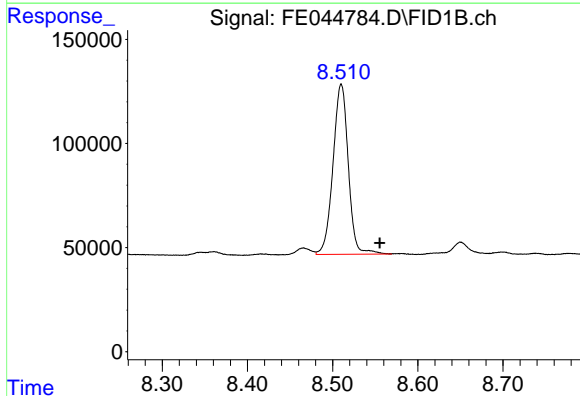
R.T.: 6.253 min
 Delta R.T.: -0.013 min
 Response: 34475
 Conc: 0.19 ug/ml

Instrument :
 FID_E
 ClientSampleId :



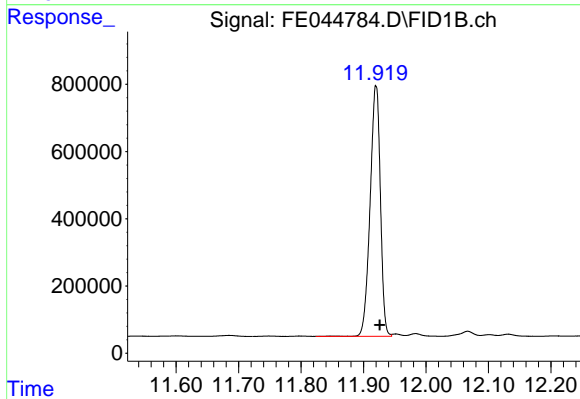
#5 A~2-methylnaphthalene (C12.89)

R.T.: 7.348 min
 Delta R.T.: -0.014 min
 Response: 48658
 Conc: 0.28 ug/ml



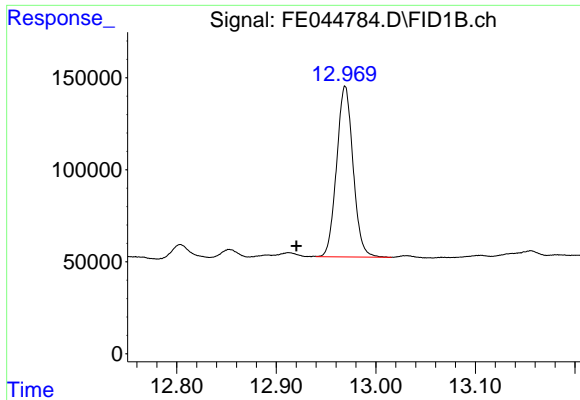
#6 n-Tetradecane (C14)

R.T.: 8.510 min
 Delta R.T.: -0.045 min
 Response: 1018402
 Conc: 6.20 ug/ml



#9 ortho-Terphenyl (SURR)

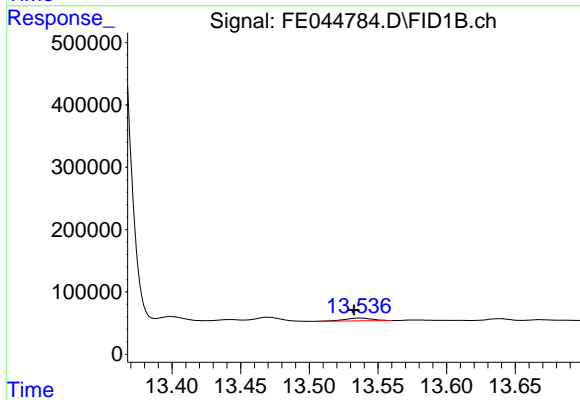
R.T.: 11.920 min
 Delta R.T.: -0.006 min
 Response: 8515710
 Conc: 45.36 ug/ml



#10 n-Eicosane (C20)

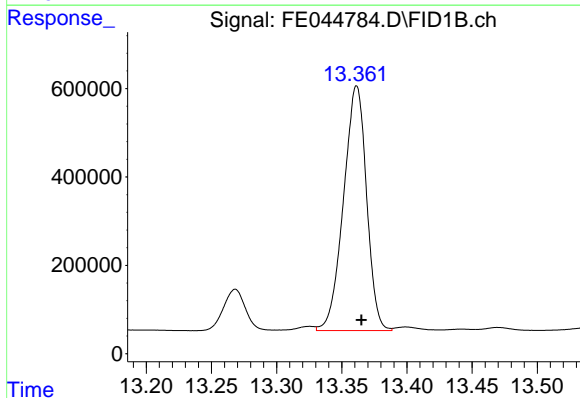
R.T.: 12.969 min
 Delta R.T.: 0.049 min
 Response: 1065082
 Conc: 6.62 ug/ml

Instrument :
 FID_E
 ClientSampleId :



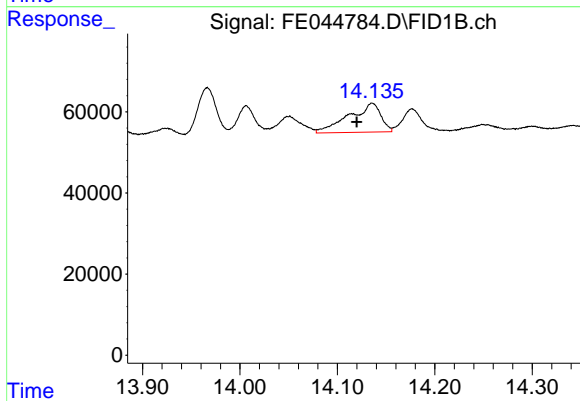
#11 n-Heneicosane (C21)

R.T.: 13.537 min
 Delta R.T.: 0.004 min
 Response: 65164
 Conc: 0.42 ug/ml



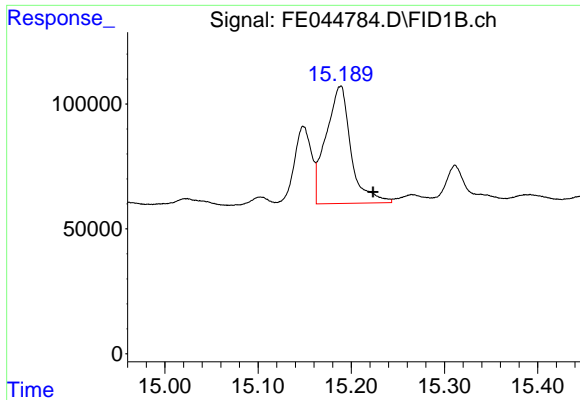
#12 1-chlorooctadecane (SURR)

R.T.: 13.361 min
 Delta R.T.: -0.004 min
 Response: 6810069
 Conc: 50.06 ug/ml



#13 n-Docosane (C22)

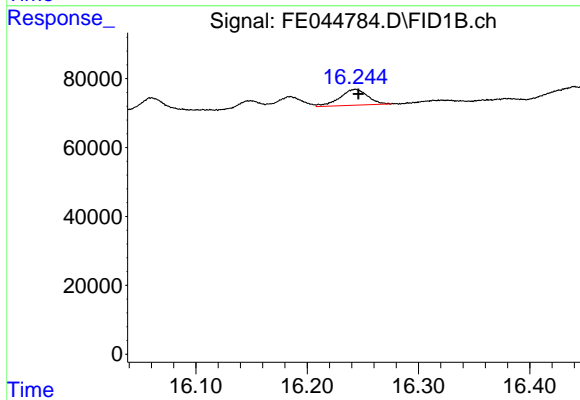
R.T.: 14.136 min
 Delta R.T.: 0.016 min
 Response: 162988
 Conc: 1.06 ug/ml



#14 n-Tetracosane (C24)

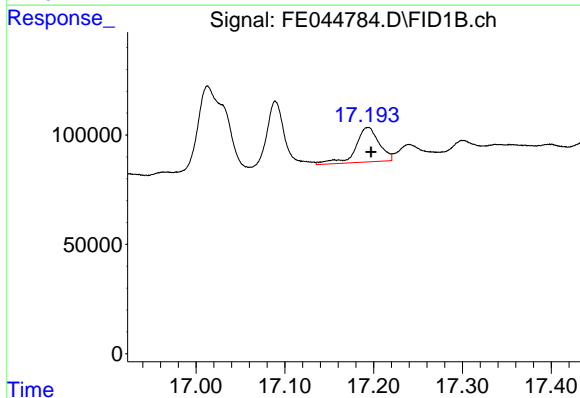
R.T.: 15.188 min
 Delta R.T.: -0.035 min
 Response: 877554
 Conc: 5.81 ug/ml

Instrument :
 FID_E
 ClientSampleId :



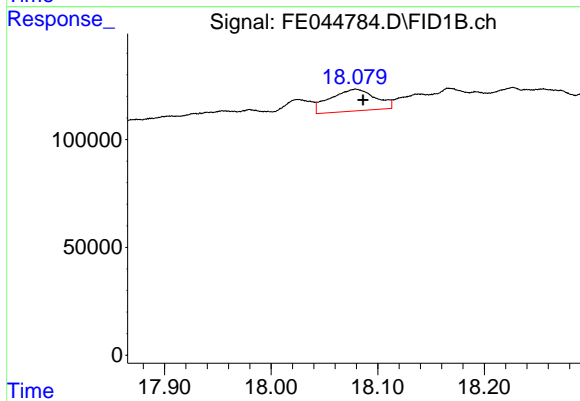
#15 n-Hexacosane (C26)

R.T.: 16.243 min
 Delta R.T.: -0.003 min
 Response: 79892
 Conc: 0.54 ug/ml



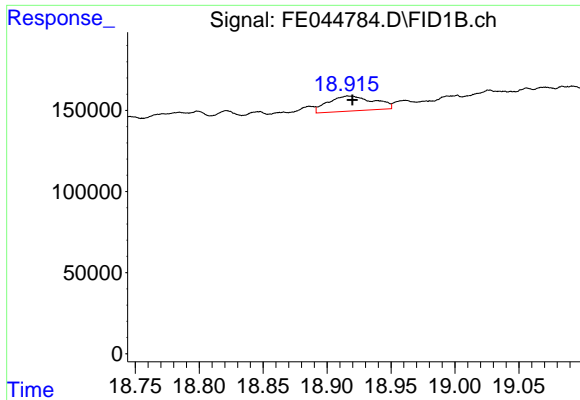
#16 n-Octacosane (C28)

R.T.: 17.194 min
 Delta R.T.: -0.003 min
 Response: 291564
 Conc: 2.03 ug/ml



#17 n-Tricontane (C30)

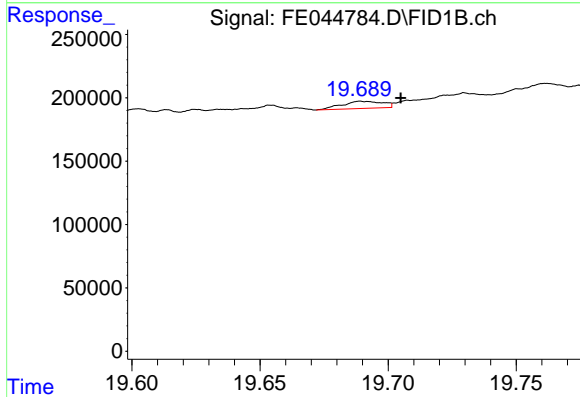
R.T.: 18.079 min
 Delta R.T.: -0.007 min
 Response: 297596
 Conc: 2.01 ug/ml



#18 n-Dotriacontane (C32)

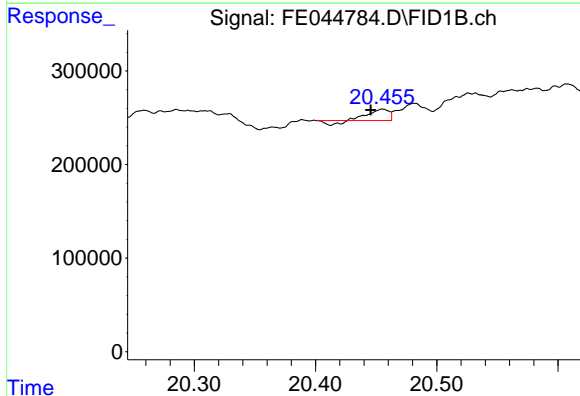
R.T.: 18.917 min
 Delta R.T.: -0.003 min
 Response: 230480
 Conc: 1.56 ug/ml

Instrument :
 FID_E
 ClientSampleId :



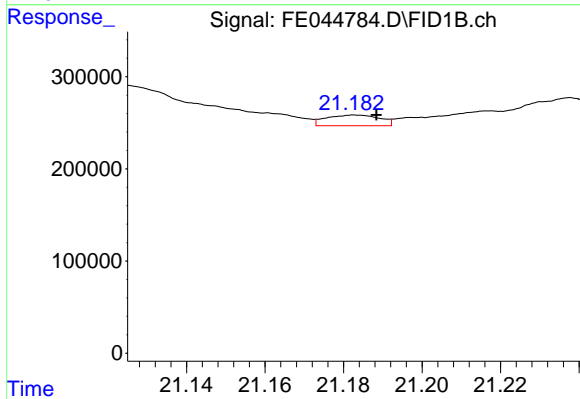
#19 n-Tetraatriacontane (C34)

R.T.: 19.690 min
 Delta R.T.: -0.015 min
 Response: 61700
 Conc: 0.42 ug/ml



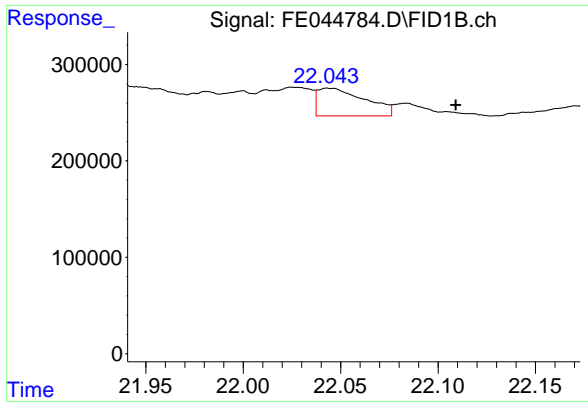
#20 n-Hexatriacontane (C36)

R.T.: 20.455 min
 Delta R.T.: 0.010 min
 Response: 110662
 Conc: 0.76 ug/ml



#21 n-Octatriacontane (C38)

R.T.: 21.183 min
 Delta R.T.: -0.005 min
 Response: 108865
 Conc: 0.73 ug/ml



#22 n-Tetracontane (C40)

R.T.: 22.044 min
Delta R.T.: -0.065 min
Response: 485412
Conc: 3.08 ug/ml

Instrument :
FID_E
ClientSampleId :