

Data Path : Z:\pestpcbsrv\HPCHEM1\FID\_E\Data\FE101223AL\  
 Data File : FE044823.D  
 Signal(s) : FID1B.ch  
 Acq On : 12 Oct 2023 18:35  
 Operator : YP\AJ  
 Sample : 04854-02  
 Misc :  
 ALS Vial : 26 Sample Multiplier: 1

Instrument :  
 FID\_E  
 ClientSampleId :  
 TR-05-101123-E2

Integration File: autoint1.e  
 Quant Time: Oct 13 01:12:03 2023  
 Quant Method : Z:\pestpcbsrv\HPCHEM1\FID\_E\methods\Aliphatic EPH 101123.M  
 Quant Title : GC Extractables  
 QLast Update : Thu Oct 12 06:15:32 2023  
 Response via : Initial Calibration  
 Integrator: ChemStation

Volume Inj. : 1 ul  
 Signal Phase : Rxi-1ms  
 Signal Info : 20M x 0.18mm x 0.18um

Compound	R.T.	Response	Conc Units
-----			
System Monitoring Compounds			
9) S ortho-Terphenyl (SURR)	11.911	6798321	33.913 ug/ml
Spiked Amount	50.000	Recovery	= 67.83%
12) S 1-chlorooctadecane (S...	13.370	76239172	515.179 ug/ml
Spiked Amount	50.000	Recovery	= 1030.36%

Target Compounds

-----

(f)=RT Delta > 1/2 Window

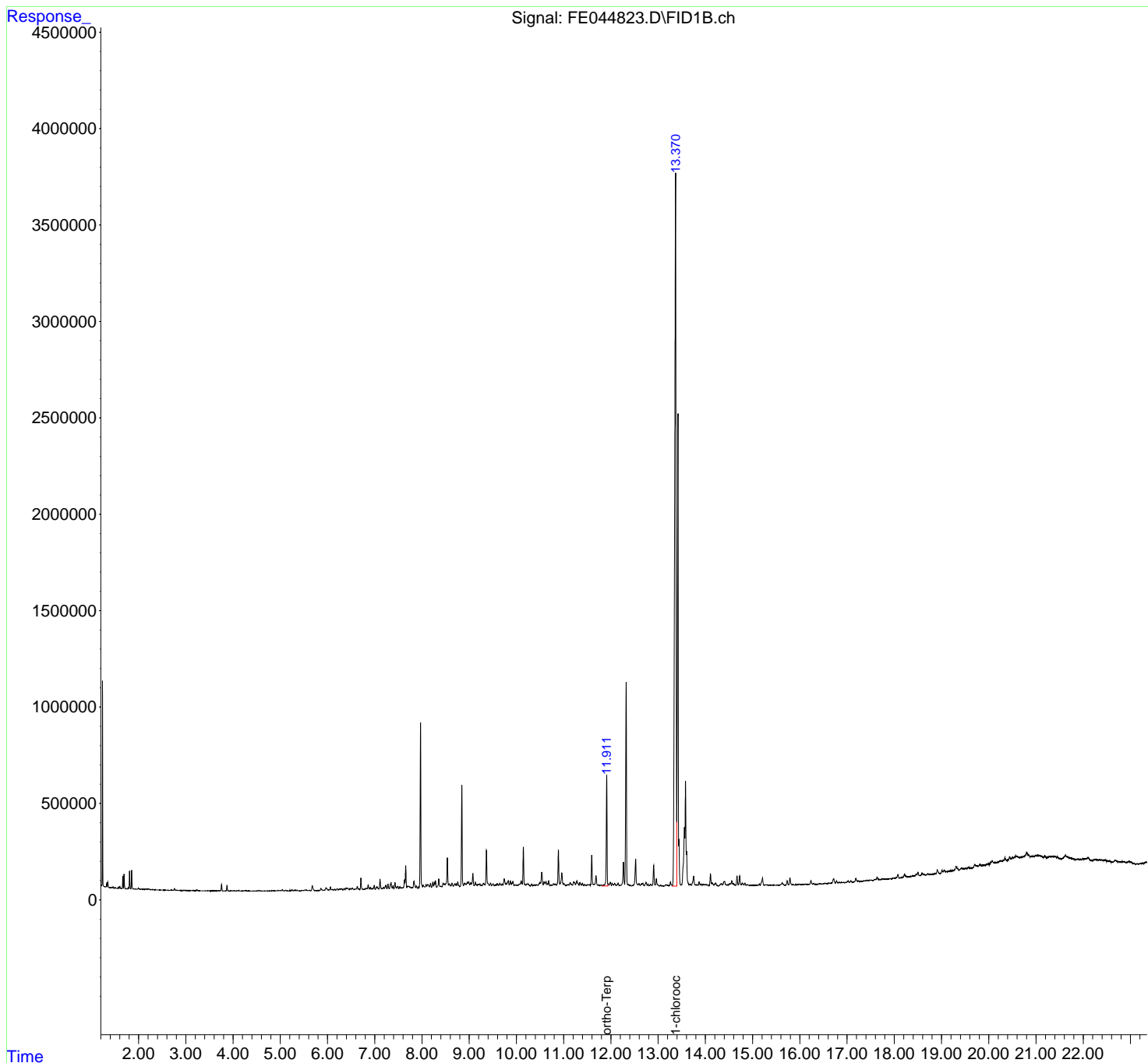
(m)=manual int.

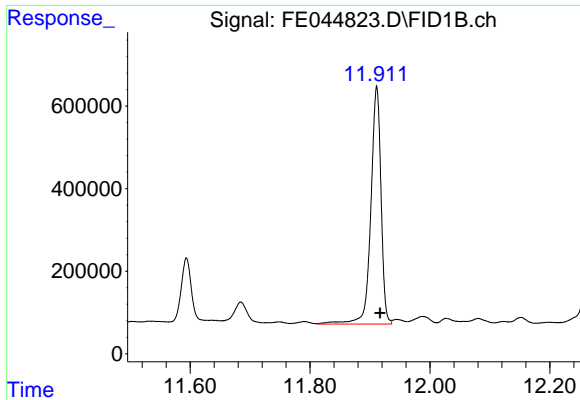
Data Path : Z:\pestpcbsrv\HPCHEM1\FID\_E\Data\FE101223AL\  
Data File : FE044823.D  
Signal(s) : FID1B.ch  
Acq On : 12 Oct 2023 18:35  
Operator : YP\AJ  
Sample : 04854-02  
Misc :  
ALS Vial : 26 Sample Multiplier: 1

Instrument :  
FID\_E  
ClientSampleId :  
TR-05-101123-E2

Integration File: autoint1.e  
Quant Time: Oct 13 01:12:03 2023  
Quant Method : Z:\pestpcbsrv\HPCHEM1\FID\_E\methods\Aliphatic EPH 101123.M  
Quant Title : GC Extractables  
QLast Update : Thu Oct 12 06:15:32 2023  
Response via : Initial Calibration  
Integrator: ChemStation

Volume Inj. : 1 ul  
Signal Phase : Rxi-1ms  
Signal Info : 20M x 0.18mm x 0.18um

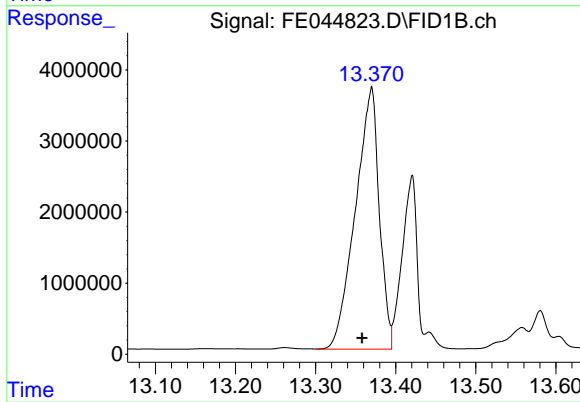




#9 ortho-Terphenyl (SURR)

R.T.: 11.911 min  
Delta R.T.: -0.006 min  
Response: 6798321  
Conc: 33.91 ug/ml

Instrument :  
FID\_E  
ClientSampleId :  
TR-05-101123-E2



#12 1-chlorooctadecane (SURR)

R.T.: 13.370 min  
Delta R.T.: 0.012 min  
Response: 76239172  
Conc: 515.18 ug/ml