

Data Path : Z:\pestpcbsrv\HPCHEM1\FID\_E\Data\FE101524AL\  
 Data File : FE050670.D  
 Signal(s) : FID1B.ch  
 Acq On : 15 Oct 2024 14:57  
 Operator : YP\AJ  
 Sample : PB164153BSD  
 Misc :  
 ALS Vial : 13 Sample Multiplier: 1

**Instrument :**  
 FID\_E  
**ClientSampleId :**  
 PB164153BSD

**Manual Integrations**  
**APPROVED**  
 Reviewed By :Yogesh Patel 10/16/2024  
 Supervised By :Ankita Jodhani 10/16/2024

Integration File: autoint1.e  
 Quant Time: Oct 16 02:47:43 2024  
 Quant Method : Z:\pestpcbsrv\HPCHEM1\FID\_E\methods\Aliphatic EPH 100824.M  
 Quant Title : GC Extractables  
 QLast Update : Mon Oct 07 16:32:18 2024  
 Response via : Initial Calibration  
 Integrator: ChemStation

Volume Inj. : 1 ul  
 Signal Phase : Rxi-1ms  
 Signal Info : 20M x 0.18mm x 0.18um

| Compound                           | R.T.   | Response | Conc Units    |
|------------------------------------|--------|----------|---------------|
| <b>System Monitoring Compounds</b> |        |          |               |
| 9) S ortho-Terphenyl (SURR)        | 11.858 | 6142010  | 38.958 ug/ml  |
| Spiked Amount                      | 50.000 | Recovery | = 77.92%      |
| 12) S 1-chlorooctadecane (S...     | 13.291 | 5113929  | 43.231 ug/ml  |
| Spiked Amount                      | 50.000 | Recovery | = 86.46%      |
| <b>Target Compounds</b>            |        |          |               |
| 1) T n-Nonane (C9)                 | 3.253  | 4968989  | 35.169 ug/ml  |
| 2) T n-Decane (C10)                | 4.501  | 5299099  | 36.934 ug/ml  |
| 3) T A~Naphthalene (C11.7)         | 6.208  | 6012288  | 42.047 ug/ml  |
| 4) T n-Dodecane (C12)              | 6.666  | 5697858  | 39.587 ug/ml  |
| 5) T A~2-methylnaphthalene...      | 7.304  | 5663053  | 42.746 ug/ml  |
| 6) T n-Tetradecane (C14)           | 8.493  | 5892943  | 41.190 ug/ml  |
| 7) T n-Hexadecane (C16)            | 10.097 | 5864748  | 39.850 ug/ml  |
| 8) T n-Octadecane (C18)            | 11.538 | 5970281  | 39.970 ug/ml  |
| 10) T n-Eicosane (C20)             | 12.847 | 5964185  | 41.591 ug/ml  |
| 11) T n-Heneicosane (C21)          | 13.456 | 5762865  | 41.036 ug/ml  |
| 13) T n-Docosane (C22)             | 14.042 | 5692958  | 40.578 ug/ml  |
| 14) T n-Tetracosane (C24)          | 15.142 | 11207231 | 79.328 ug/mlm |
| 15) T n-Hexacosane (C26)           | 16.163 | 5628482  | 39.999 ug/ml  |
| 16) T n-Octacosane (C28)           | 17.111 | 6785560  | 46.371 ug/ml  |
| 17) T n-Tricontane (C30)           | 17.998 | 5849844  | 36.791 ug/ml  |
| 18) T n-Dotriacontane (C32)        | 18.830 | 5807822  | 35.826 ug/ml  |
| 19) T n-Tetratriacontane (C34)     | 19.613 | 5991917  | 40.792 ug/ml  |
| 20) T n-Hexatriacontane (C36)      | 20.351 | 5680821  | 44.796 ug/ml  |
| 21) T n-Octatriacontane (C38)      | 21.076 | 5421132  | 43.844 ug/ml  |
| 22) T n-Tetracontane (C40)         | 21.959 | 4796181  | 43.073 ug/ml  |

(f)=RT Delta > 1/2 Window

(m)=manual int.

Data Path : Z:\pestpcbsrv\HPCHEM1\FID\_E\Data\FE101524AL\  
 Data File : FE050670.D  
 Signal(s) : FID1B.ch  
 Acq On : 15 Oct 2024 14:57  
 Operator : YP\AJ  
 Sample : PB164153BSD  
 Misc :  
 ALS Vial : 13 Sample Multiplier: 1

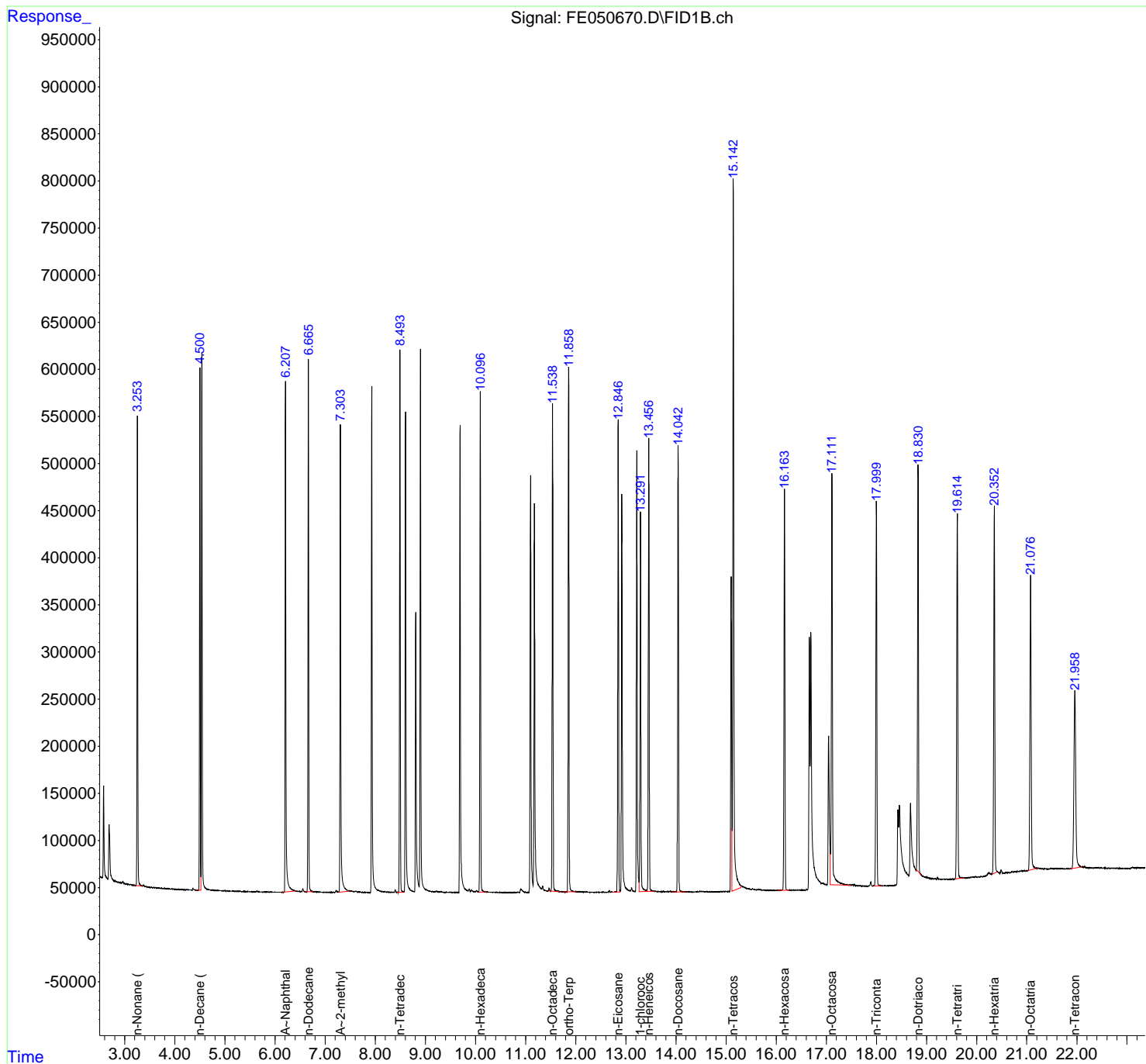
**Instrument :**  
 FID\_E  
**ClientSampleId :**  
 PB164153BSD

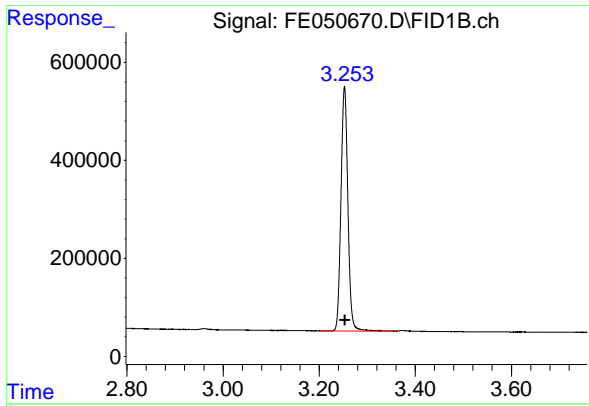
**Manual Integrations**  
**APPROVED**

Reviewed By :Yogesh Patel 10/16/2024  
 Supervised By :Ankita Jodhani 10/16/2024

Integration File: autoint1.e  
 Quant Time: Oct 16 02:47:43 2024  
 Quant Method : Z:\pestpcbsrv\HPCHEM1\FID\_E\methods\Aliphatic EPH 100824.  
 Quant Title : GC Extractables  
 QLast Update : Mon Oct 07 16:32:18 2024  
 Response via : Initial Calibration  
 Integrator: ChemStation

Volume Inj. : 1 ul  
 Signal Phase : Rxi-1ms  
 Signal Info : 20M x 0.18mm x 0.18um





#1 n-Nonane (C9)

R.T.: 3.253 min  
 Delta R.T.: -0.001 min  
 Response: 4968989  
 Conc: 35.17 ug/ml

Instrument :

FID\_E

Client Sample Id :

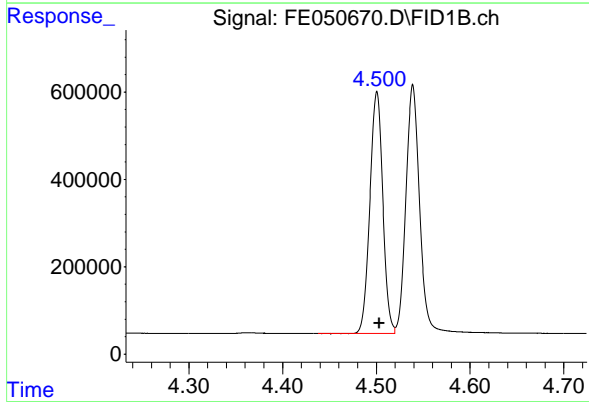
PB164153BSD

Manual Integrations

APPROVED

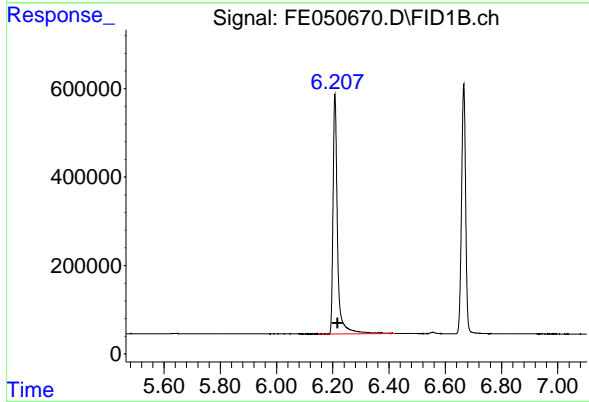
Reviewed By :Yogesh Patel 10/16/2024

Supervised By :Ankita Jodhani 10/16/2024



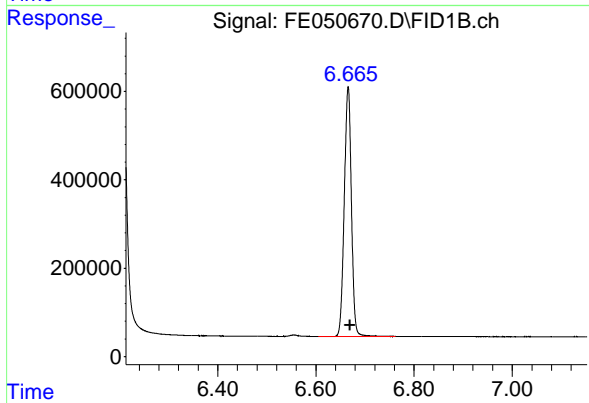
#2 n-Decane (C10)

R.T.: 4.501 min  
 Delta R.T.: -0.002 min  
 Response: 5299099  
 Conc: 36.93 ug/ml



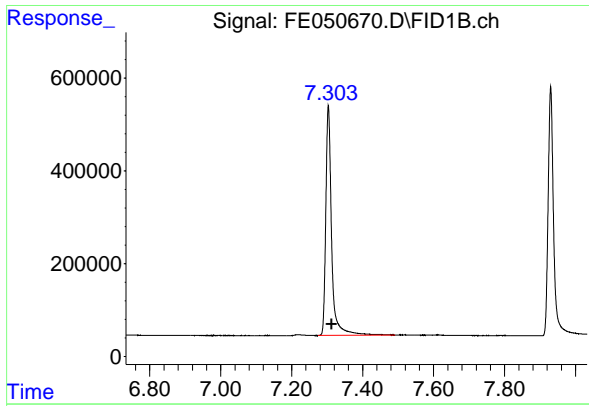
#3 A~Naphthalene (C11.7)

R.T.: 6.208 min  
 Delta R.T.: -0.009 min  
 Response: 6012288  
 Conc: 42.05 ug/ml



#4 n-Dodecane (C12)

R.T.: 6.666 min  
 Delta R.T.: -0.004 min  
 Response: 5697858  
 Conc: 39.59 ug/ml



#5 A~2-methylnaphthalene (C12.89)

R.T.: 7.304 min  
 Delta R.T.: -0.009 min  
 Response: 5663053  
 Conc: 42.75 ug/ml

Instrument :

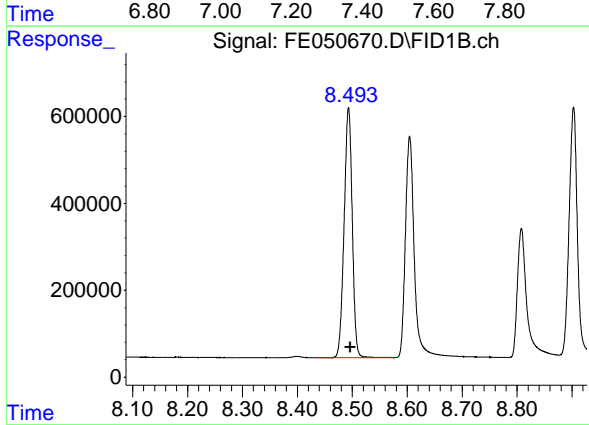
FID\_E

Client Sample Id :

PB164153BSD

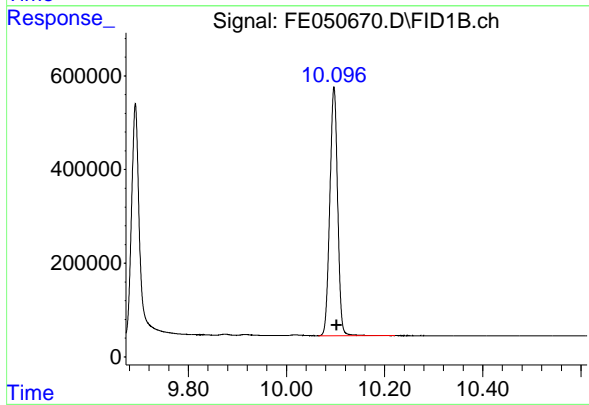
Manual Integrations  
 APPROVED

Reviewed By :Yogesh Patel 10/16/2024  
 Supervised By :Ankita Jodhani 10/16/2024



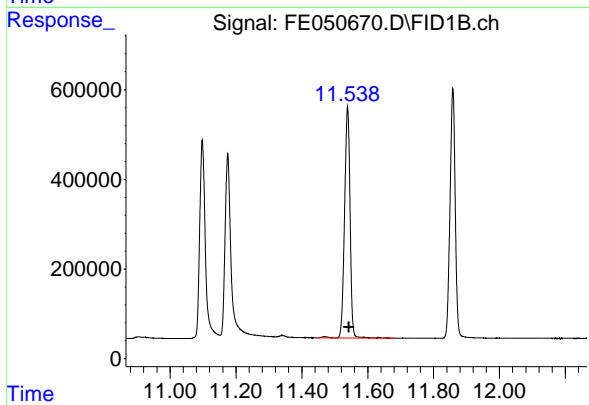
#6 n-Tetradecane (C14)

R.T.: 8.493 min  
 Delta R.T.: -0.004 min  
 Response: 5892943  
 Conc: 41.19 ug/ml



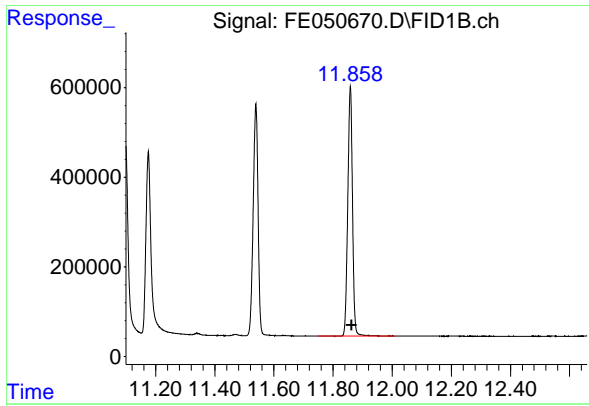
#7 n-Hexadecane (C16)

R.T.: 10.097 min  
 Delta R.T.: -0.006 min  
 Response: 5864748  
 Conc: 39.85 ug/ml



#8 n-Octadecane (C18)

R.T.: 11.538 min  
 Delta R.T.: -0.005 min  
 Response: 5970281  
 Conc: 39.97 ug/ml



#9 ortho-Terphenyl (SURR)

R.T.: 11.858 min  
 Delta R.T.: -0.005 min  
 Response: 6142010  
 Conc: 38.96 ug/ml

Instrument :

FID\_E

Client Sample Id :

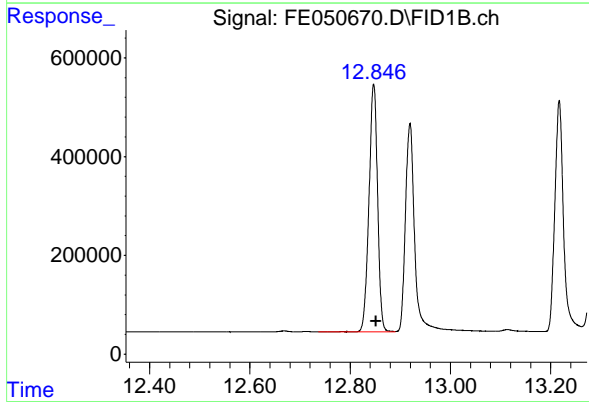
PB164153BSD

Manual Integrations

APPROVED

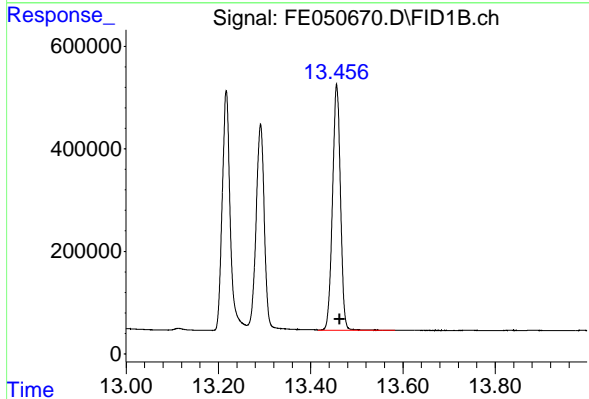
Reviewed By :Yogesh Patel 10/16/2024

Supervised By :Ankita Jodhani 10/16/2024



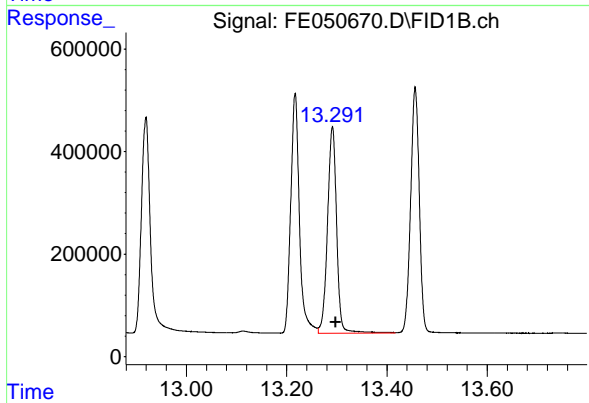
#10 n-Eicosane (C20)

R.T.: 12.847 min  
 Delta R.T.: -0.005 min  
 Response: 5964185  
 Conc: 41.59 ug/ml



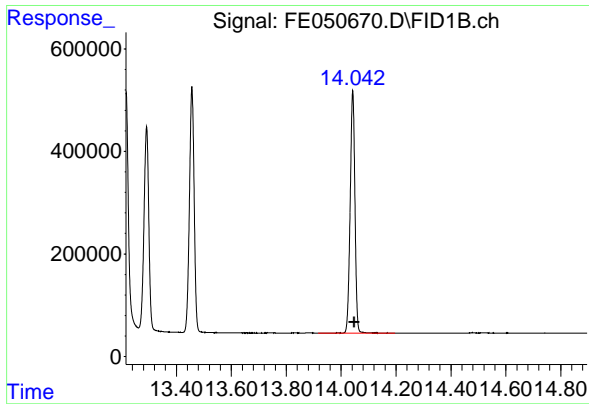
#11 n-Heneicosane (C21)

R.T.: 13.456 min  
 Delta R.T.: -0.006 min  
 Response: 5762865  
 Conc: 41.04 ug/ml



#12 1-chlorooctadecane (SURR)

R.T.: 13.291 min  
 Delta R.T.: -0.007 min  
 Response: 5113929  
 Conc: 43.23 ug/ml



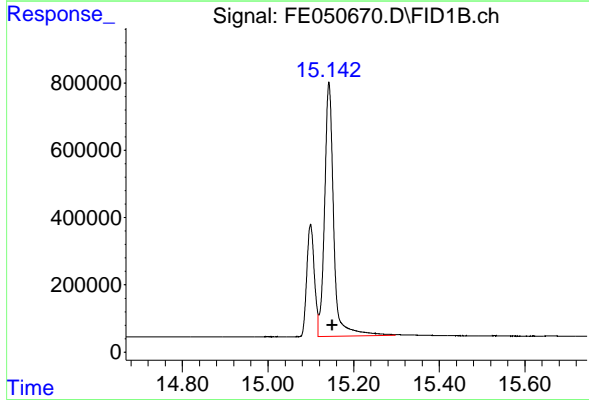
#13 n-Docosane (C22)

R.T.: 14.042 min  
 Delta R.T.: -0.006 min  
 Response: 5692958  
 Conc: 40.58 ug/ml

Instrument : FID\_E  
 Client Sample Id : PB164153BSD

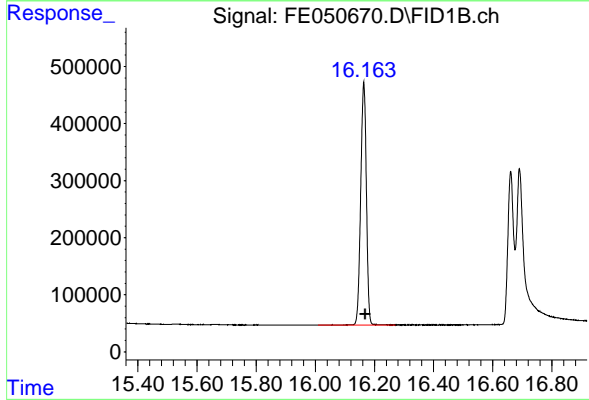
Manual Integrations  
 APPROVED

Reviewed By :Yogesh Patel 10/16/2024  
 Supervised By :Ankita Jodhani 10/16/2024



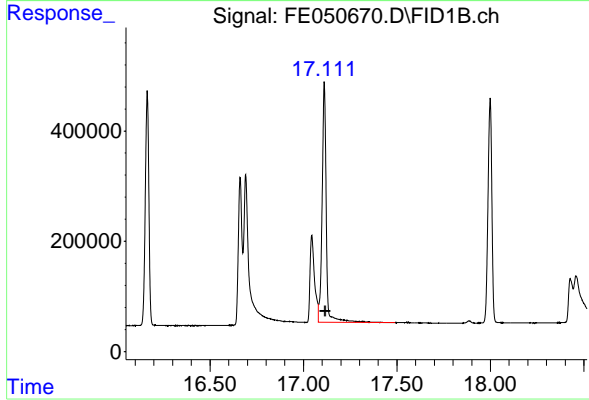
#14 n-Tetracosane (C24)

R.T.: 15.142 min  
 Delta R.T.: -0.008 min  
 Response: 11207231  
 Conc: 79.33 ug/ml



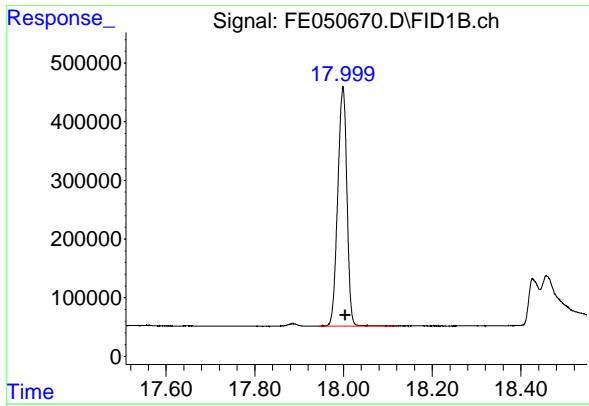
#15 n-Hexacosane (C26)

R.T.: 16.163 min  
 Delta R.T.: -0.006 min  
 Response: 5628482  
 Conc: 40.00 ug/ml



#16 n-Octacosane (C28)

R.T.: 17.111 min  
 Delta R.T.: -0.007 min  
 Response: 6785560  
 Conc: 46.37 ug/ml



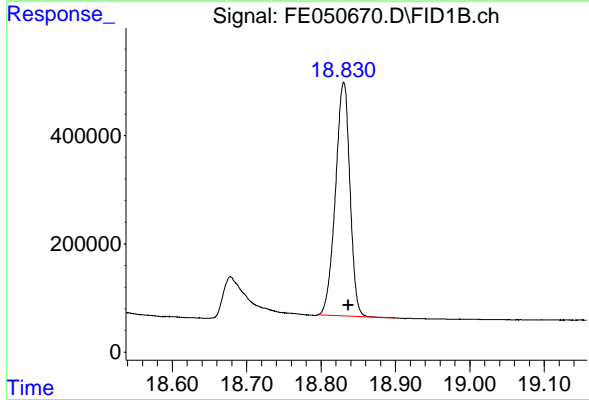
#17 n-Tricontane (C30)

R.T.: 17.998 min  
Delta R.T.: -0.006 min  
Response: 5849844  
Conc: 36.79 ug/ml

Instrument :  
FID\_E  
Client Sample Id :  
PB164153BSD

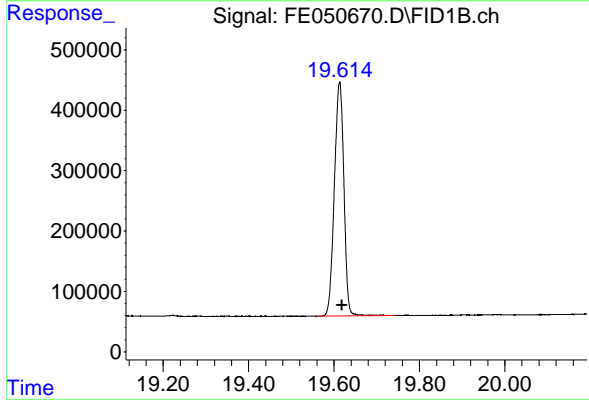
Manual Integrations  
APPROVED

Reviewed By :Yogesh Patel 10/16/2024  
Supervised By :Ankita Jodhani 10/16/2024



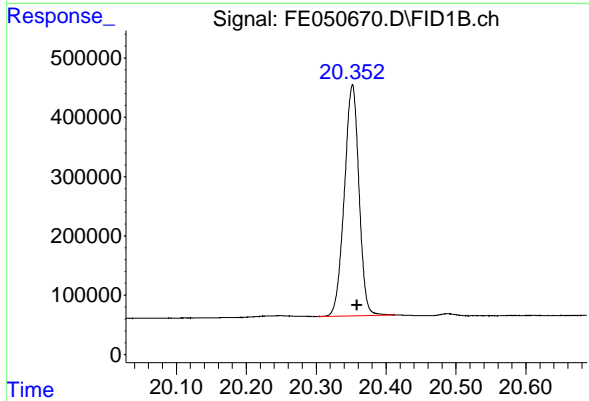
#18 n-Dotriacontane (C32)

R.T.: 18.830 min  
Delta R.T.: -0.007 min  
Response: 5807822  
Conc: 35.83 ug/ml



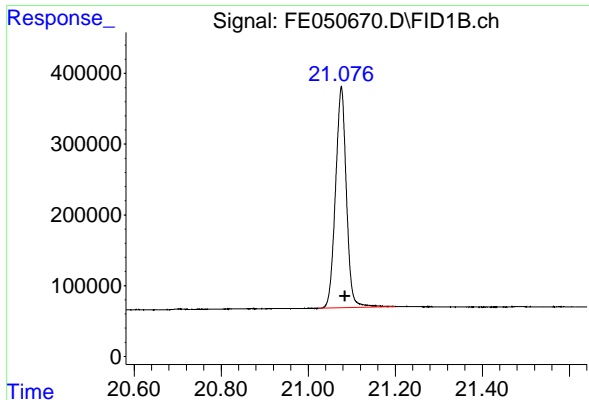
#19 n-Tetraatriacontane (C34)

R.T.: 19.613 min  
Delta R.T.: -0.006 min  
Response: 5991917  
Conc: 40.79 ug/ml



#20 n-Hexatriacontane (C36)

R.T.: 20.351 min  
Delta R.T.: -0.007 min  
Response: 5680821  
Conc: 44.80 ug/ml



#21 n-Octatriacontane (C38)

R.T.: 21.076 min  
Delta R.T.: -0.008 min  
Response: 5421132  
Conc: 43.84 ug/ml

Instrument :

FID\_E

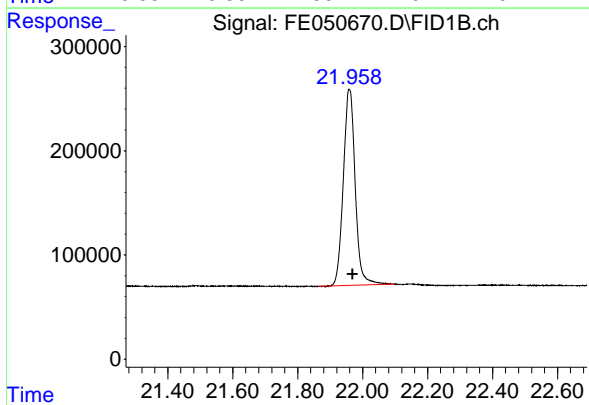
ClientSampleId :

PB164153BSD

Manual Integrations

APPROVED

Reviewed By :Yogesh Patel 10/16/2024  
Supervised By :Ankita Jodhani 10/16/2024



#22 n-Tetracontane (C40)

R.T.: 21.959 min  
Delta R.T.: -0.010 min  
Response: 4796181  
Conc: 43.07 ug/ml