

Data Path : Z:\pestpcbsrv\HPCHEM1\FID\_E\Data\FE101623AL\  
 Data File : FE044875.D  
 Signal(s) : FID1B.ch  
 Acq On : 16 Oct 2023 21:11  
 Operator : YP\AJ  
 Sample : 04888-04  
 Misc :  
 ALS Vial : 28 Sample Multiplier: 1

Integration File: autoint1.e  
 Quant Time: Oct 17 01:20:00 2023  
 Quant Method : Z:\pestpcbsrv\HPCHEM1\FID\_E\methods\Aliphatic EPH 101123.M  
 Quant Title : GC Extractables  
 QLast Update : Thu Oct 12 06:15:32 2023  
 Response via : Initial Calibration  
 Integrator: ChemStation

Volume Inj. : 1 ul  
 Signal Phase : Rxi-1ms  
 Signal Info : 20M x 0.18mm x 0.18um

Compound	R.T.	Response	Conc Units
-----			
System Monitoring Compounds			
9) S ortho-Terphenyl (SURR)	11.907	5083364	25.358 ug/ml
Spiked Amount	50.000	Recovery	= 50.72%
12) S 1-chlorooctadecane (S...	13.349	3913843	26.447 ug/ml
Spiked Amount	50.000	Recovery	= 52.89%

Target Compounds

-----

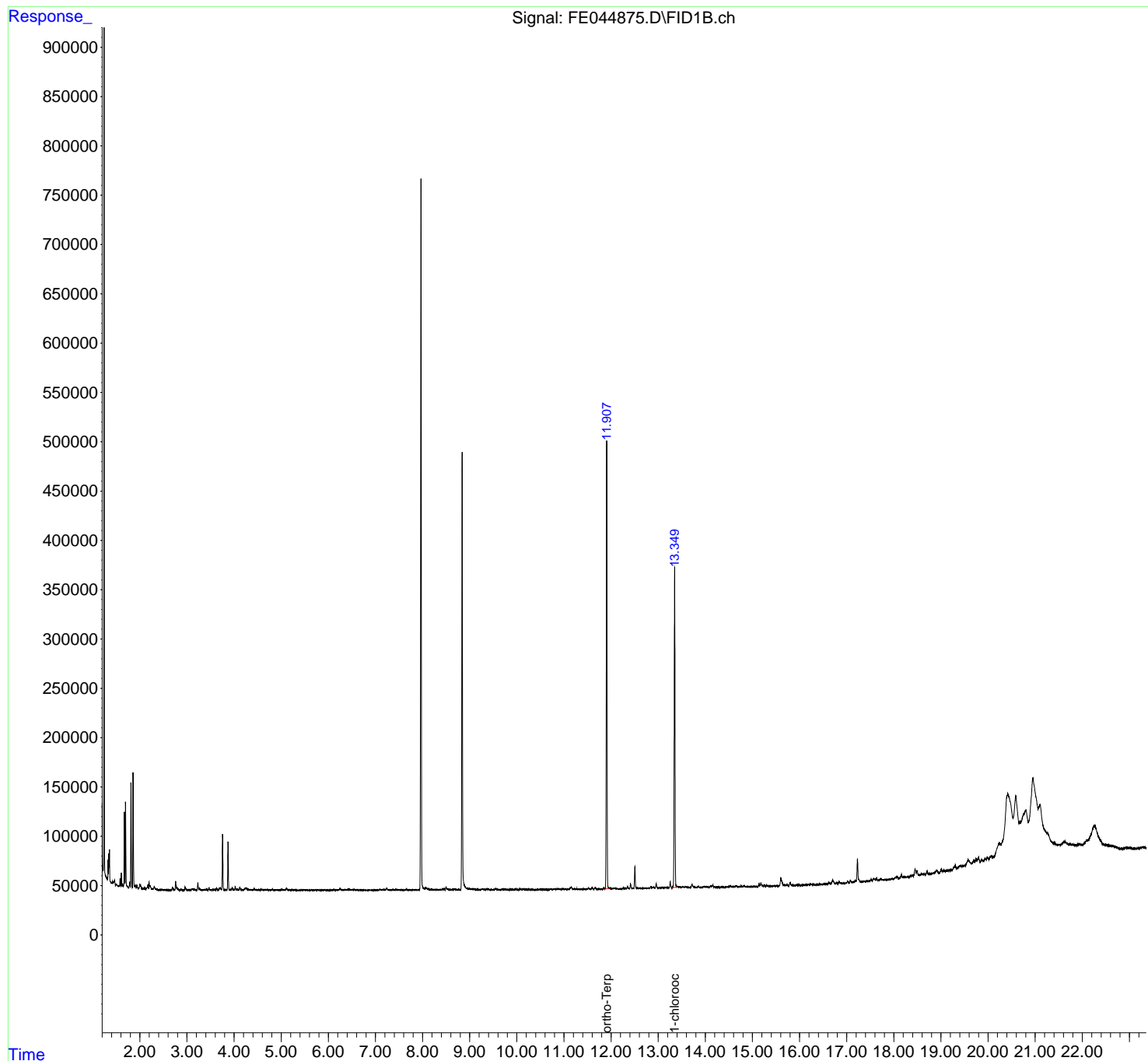
(f)=RT Delta > 1/2 Window

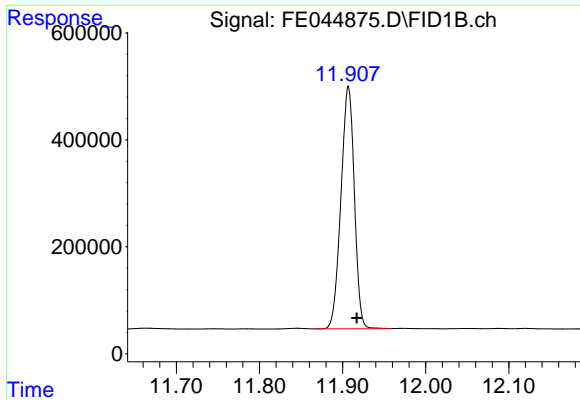
(m)=manual int.

Data Path : Z:\pestpcbsrv\HPCHEM1\FID\_E\Data\FE101623AL\  
Data File : FE044875.D  
Signal(s) : FID1B.ch  
Acq On : 16 Oct 2023 21:11  
Operator : YP\AJ  
Sample : 04888-04  
Misc :  
ALS Vial : 28 Sample Multiplier: 1

Integration File: autoint1.e  
Quant Time: Oct 17 01:20:00 2023  
Quant Method : Z:\pestpcbsrv\HPCHEM1\FID\_E\methods\Aliphatic EPH 101123.M  
Quant Title : GC Extractables  
QLast Update : Thu Oct 12 06:15:32 2023  
Response via : Initial Calibration  
Integrator: ChemStation

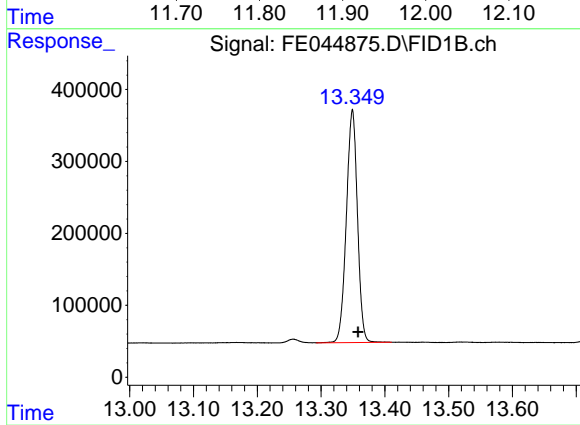
Volume Inj. : 1 ul  
Signal Phase : Rxi-1ms  
Signal Info : 20M x 0.18mm x 0.18um





#9 ortho-Terphenyl (SURR)

R.T.: 11.907 min  
Delta R.T.: -0.010 min  
Response: 5083364  
Conc: 25.36 ug/ml



#12 1-chlorooctadecane (SURR)

R.T.: 13.349 min  
Delta R.T.: -0.009 min  
Response: 3913843  
Conc: 26.45 ug/ml