

Data Path : Z:\pestpcbsrv\HPCHEM1\FID\_E\Data\FE101624AL\  
 Data File : FE050690.D  
 Signal(s) : FID1B.ch  
 Acq On : 16 Oct 2024 11:01  
 Operator : YP\AJ  
 Sample : I.BLK  
 Misc :  
 ALS Vial : 1 Sample Multiplier: 1

Instrument :  
 FID\_E  
 ClientSampleId :

Integration File: autoint1.e  
 Quant Time: Oct 17 02:56:34 2024  
 Quant Method : Z:\pestpcbsrv\HPCHEM1\FID\_E\methods\Aliphatic EPH 100824.M  
 Quant Title : GC Extractables  
 QLast Update : Mon Oct 07 16:32:18 2024  
 Response via : Initial Calibration  
 Integrator: ChemStation

Volume Inj. : 1 ul  
 Signal Phase : Rxi-1ms  
 Signal Info : 20M x 0.18mm x 0.18um

Compound	R.T.	Response	Conc Units
----------	------	----------	------------

-----  
 System Monitoring Compounds

Target Compounds  
 -----

(f)=RT Delta > 1/2 Window

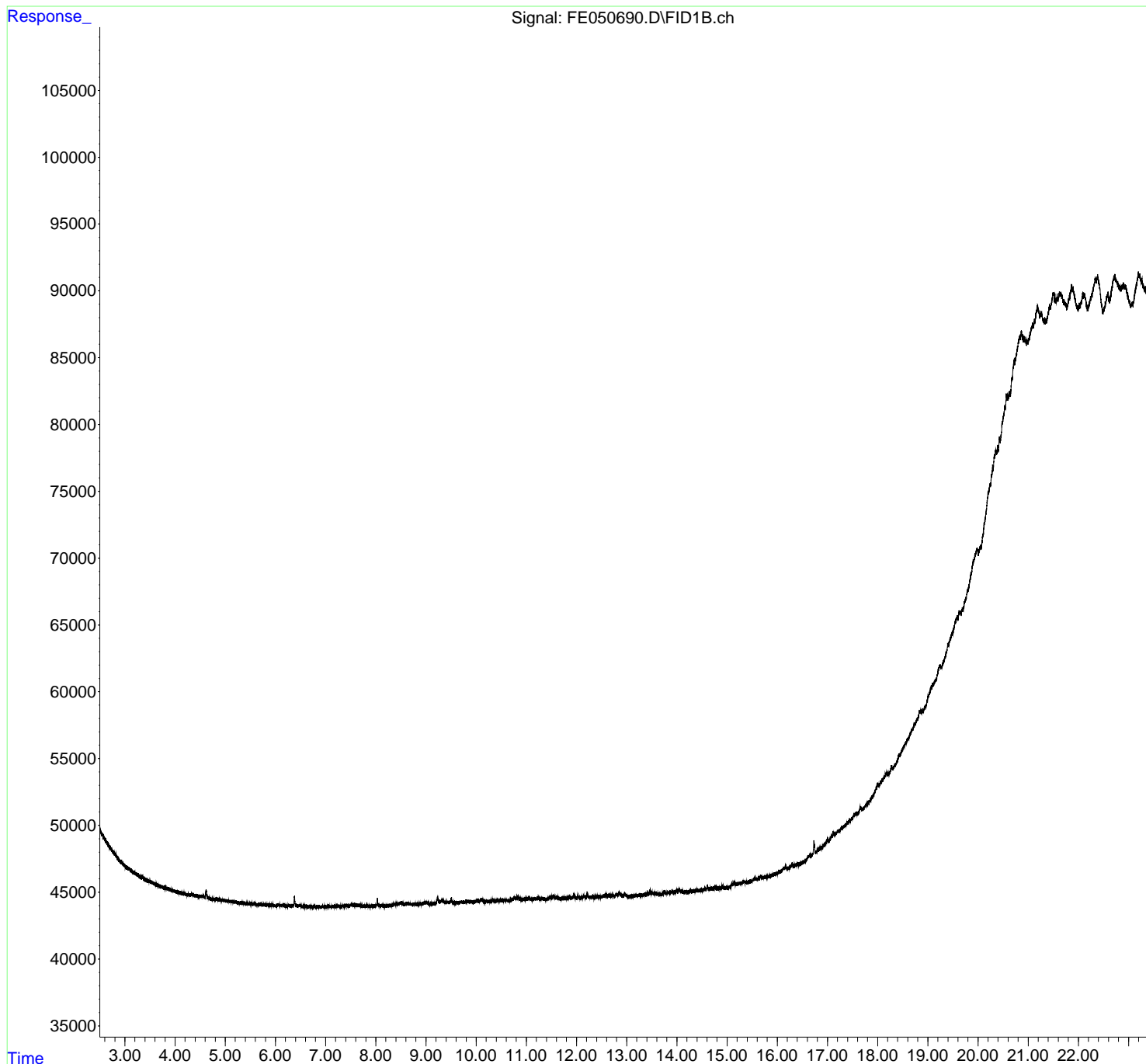
(m)=manual int.

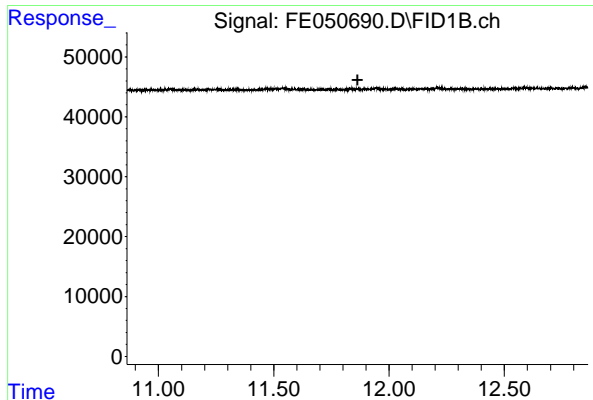
Data Path : Z:\pestpcbsrv\HPCHEM1\FID\_E\Data\FE101624AL\  
Data File : FE050690.D  
Signal(s) : FID1B.ch  
Acq On : 16 Oct 2024 11:01  
Operator : YP\AJ  
Sample : I.BLK  
Misc :  
ALS Vial : 1 Sample Multiplier: 1

Instrument :  
FID\_E  
ClientSampleId :

Integration File: autoint1.e  
Quant Time: Oct 17 02:56:34 2024  
Quant Method : Z:\pestpcbsrv\HPCHEM1\FID\_E\methods\Aliphatic EPH 100824.M  
Quant Title : GC Extractables  
QLast Update : Mon Oct 07 16:32:18 2024  
Response via : Initial Calibration  
Integrator: ChemStation

Volume Inj. : 1 ul  
Signal Phase : Rxi-1ms  
Signal Info : 20M x 0.18mm x 0.18um

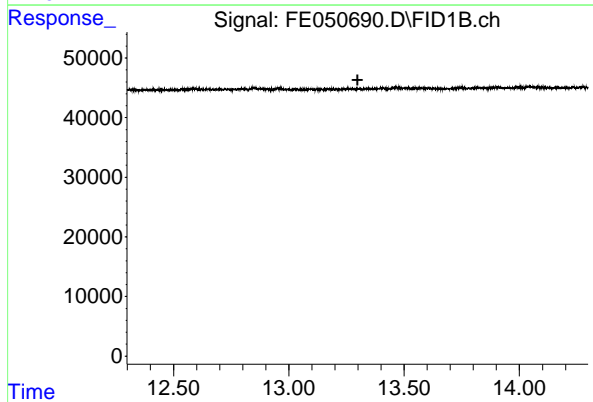




#9 ortho-Terphenyl (SURR)

R.T.: 0.000 min  
Exp R.T. : 11.863 min  
Response: 0  
Conc: N.D.

Instrument :  
FID\_E  
ClientSampleId :



#12 1-chlorooctadecane (SURR)

R.T.: 0.000 min  
Exp R.T. : 13.298 min  
Response: 0  
Conc: N.D.