

Data Path : Z:\pestpcbsrv\HPCHEM1\FID_E\Data\FE102022AL\
 Data File : FE038235.D
 Signal(s) : FID1B.ch
 Acq On : 20 Oct 2022 16:01
 Operator : YP\AJ
 Sample : PB148449BL
 Misc :
 ALS Vial : 11 Sample Multiplier: 1

Instrument :
 FID_E
 ClientSampleId :
 PB148449BL

Integration File: autoint1.e
 Quant Time: Oct 21 04:05:17 2022
 Quant Method : Z:\pestpcbsrv\HPCHEM1\FID_D\methods\Aliphatic EPH 092822.M
 Quant Title : GC Extractables
 QLast Update : Wed Sep 28 06:23:29 2022
 Response via : Initial Calibration
 Integrator: ChemStation

Volume Inj. : 1 ul
 Signal Phase : Rxi-1ms
 Signal Info : 20M x 0.18mm x 0.18um

Compound	R.T.	Response	Conc Units

System Monitoring Compounds			
9) S ortho-Terphenyl (SURR)	11.598	6849971	39.604 ug/ml
Spiked Amount	50.000	Recovery	= 79.21%
12) S 1-chlorooctadecane (S...	13.020	5614710	41.540 ug/ml
Spiked Amount	50.000	Recovery	= 83.08%

Target Compounds

(f)=RT Delta > 1/2 Window

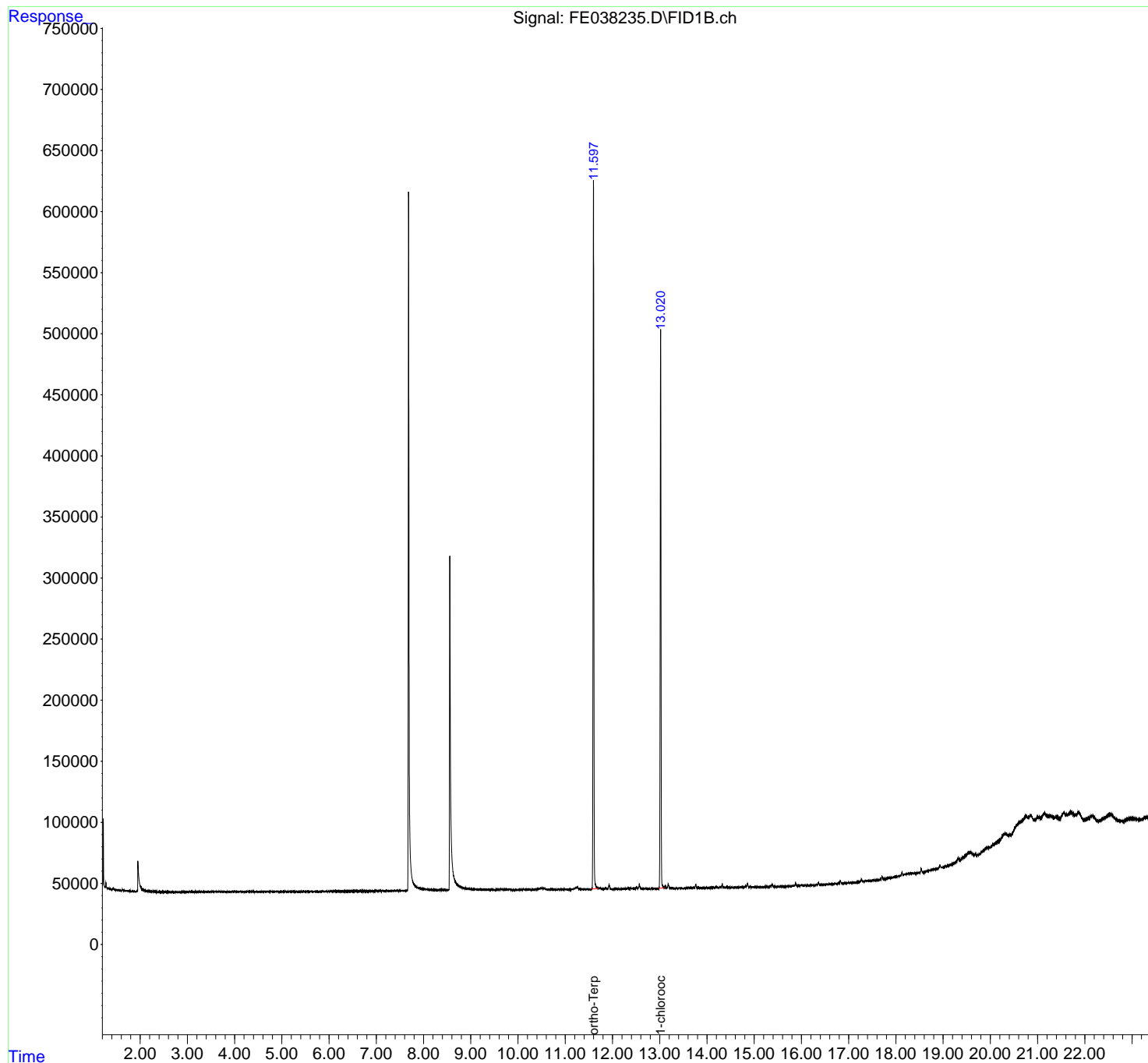
(m)=manual int.

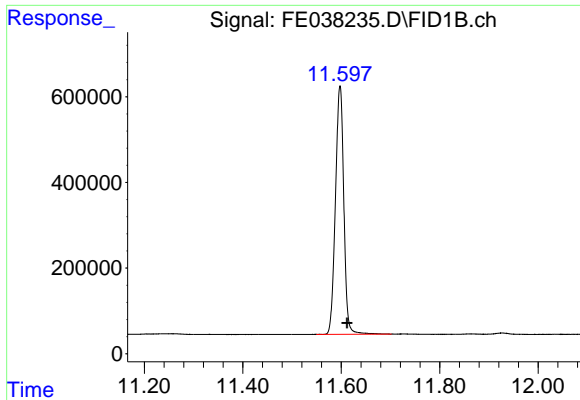
Data Path : Z:\pestpcbsrv\HPCHEM1\FID_E\Data\FE102022AL\
Data File : FE038235.D
Signal(s) : FID1B.ch
Acq On : 20 Oct 2022 16:01
Operator : YP\AJ
Sample : PB148449BL
Misc :
ALS Vial : 11 Sample Multiplier: 1

Instrument :
FID_E
ClientSampleId :
PB148449BL

Integration File: autoint1.e
Quant Time: Oct 21 04:05:17 2022
Quant Method : Z:\pestpcbsrv\HPCHEM1\FID_D\methods\Aliphatic EPH 092822.M
Quant Title : GC Extractables
QLast Update : Wed Sep 28 06:23:29 2022
Response via : Initial Calibration
Integrator: ChemStation

Volume Inj. : 1 ul
Signal Phase : Rxi-1ms
Signal Info : 20M x 0.18mm x 0.18um

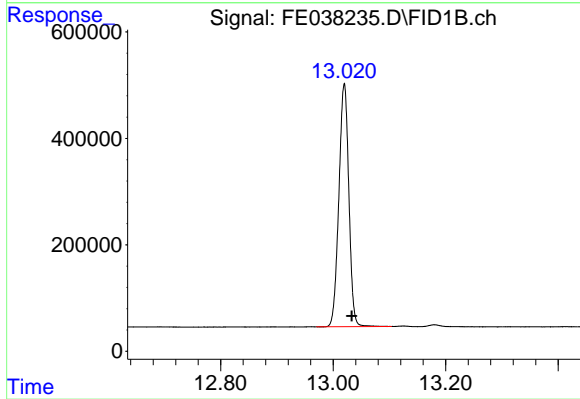




#9 ortho-Terphenyl (SURR)

R.T.: 11.598 min
Delta R.T.: -0.014 min
Response: 6849971
Conc: 39.60 ug/ml

Instrument :
FID_E
ClientSampleId :
PB148449BL



#12 1-chlorooctadecane (SURR)

R.T.: 13.020 min
Delta R.T.: -0.013 min
Response: 5614710
Conc: 41.54 ug/ml