

Data Path : Z:\pestpcbsrv\HPCHEM1\FID_E\Data\FE102023AL\
 Data File : FE044945.D
 Signal(s) : FID1B.ch
 Acq On : 20 Oct 2023 06:49
 Operator : YP\AJ
 Sample : 20 PPM ALIPHATIC HC STD
 Misc :
 ALS Vial : 3 Sample Multiplier: 1

Instrument :
 FID_E
 ClientSampleId :
 20 PPM ALIPHATIC HC STD

Manual Integrations
 APPROVED

Reviewed By :Yogesh Patel 10/23/2023
 Supervised By :Ankita Jodhani 10/23/2023

Integration File: autoint1.e
 Quant Time: Oct 20 12:18:25 2023
 Quant Method : Z:\pestpcbsrv\HPCHEM1\FID_E\methods\Aliphatic EPH 101223.M
 Quant Title : GC Extractables
 QLast Update : Thu Oct 12 06:15:32 2023
 Response via : Initial Calibration
 Integrator: ChemStation

Volume Inj. : 1 ul
 Signal Phase : Rxi-1ms
 Signal Info : 20M x 0.18mm x 0.18um

Compound	R.T.	Response	Conc Units

System Monitoring Compounds			
9) S ortho-Terphenyl (SURR)	11.900	3636284	18.139 ug/ml
Spiked Amount	50.000	Recovery =	36.28%
12) S 1-chlorooctadecane (S...	13.341	2609988	17.637 ug/ml
Spiked Amount	50.000	Recovery =	35.27%
Target Compounds			
1) T n-Nonane (C9)	3.285	3079465	18.357 ug/ml
2) T n-Decane (C10)	4.536	3229070	18.955 ug/ml
3) T A~Naphthalene (C11.7)	6.237	3426590	18.510 ug/ml
4) T n-Dodecane (C12)	6.702	3240316	18.771 ug/ml
5) T A~2-methylnaphthalene...	7.333	3295869	18.271 ug/ml
6) T n-Tetradecane (C14)	8.529	3177537	18.530 ug/ml
7) T n-Hexadecane (C16)	10.139	3202194	18.312 ug/ml
8) T n-Octadecane (C18)	11.585	3172837	18.191 ug/ml
10) T n-Eicosane (C20)	12.897	3009286	18.016 ug/ml
11) T n-Heneicosane (C21)	13.510	2917952	17.900 ug/ml
13) T n-Docosane (C22)	14.097	2887085	18.050 ug/ml
14) T n-Tetracosane (C24)	15.203	2868574	18.484 ug/ml
15) T n-Hexacosane (C26)	16.226	2834948	18.883 ug/ml
16) T n-Octacosane (C28)	17.178	2928846	19.945 ug/ml
17) T n-Tricontane (C30)	18.067	3206282	21.558 ug/ml
18) T n-Dotriacontane (C32)	18.903	3366397	22.428 ug/ml
19) T n-Tetratriacontane (C34)	19.689	3297074	22.148 ug/ml
20) T n-Hexatriacontane (C36)	20.428	3178991	20.678 ug/ml
21) T n-Octatriacontane (C38)	21.168	3182812	20.375 ug/ml
22) T n-Tetracontane (C40)	22.085	3189217	19.083 ug/ml

(f)=RT Delta > 1/2 Window

(m)=manual int.

Data Path : Z:\pestpcbsrv\HPCHEM1\FID_E\Data\FE102023AL\
 Data File : FE044945.D
 Signal(s) : FID1B.ch
 Acq On : 20 Oct 2023 06:49
 Operator : YP\AJ
 Sample : 20 PPM ALIPHATIC HC STD
 Misc :
 ALS Vial : 3 Sample Multiplier: 1

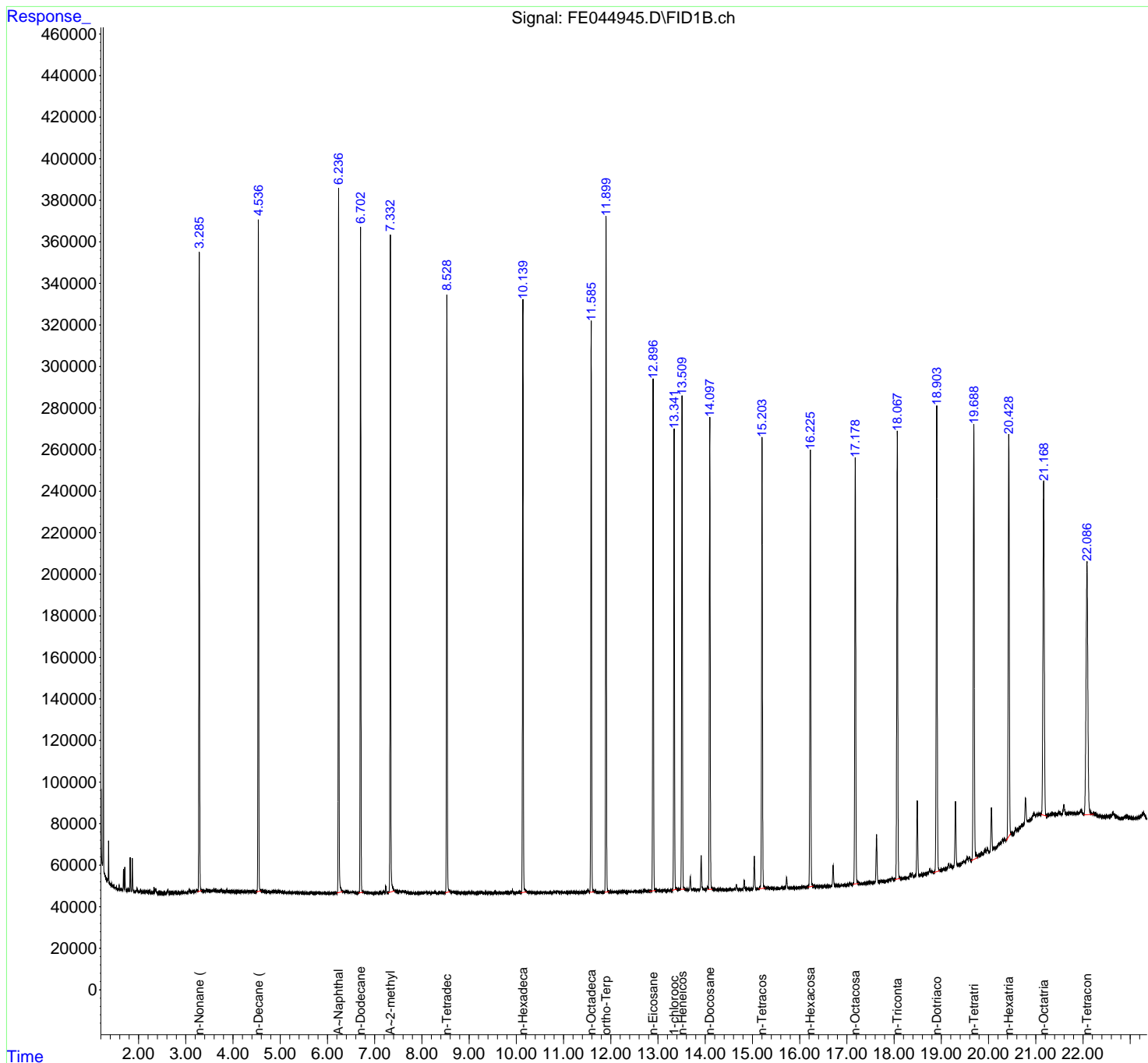
Instrument :
 FID_E
ClientSampleId :
 20 PPM ALIPHATIC HC STD

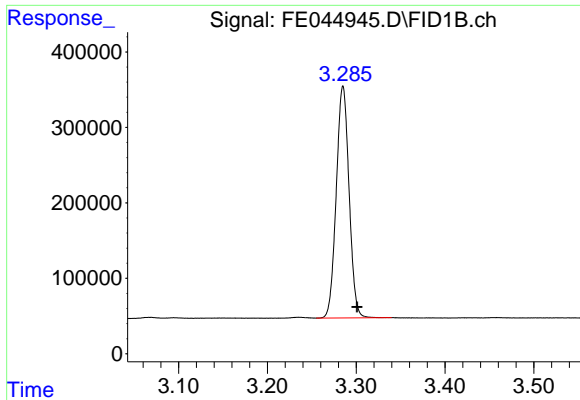
Manual Integrations
APPROVED

Reviewed By :Yogesh Patel 10/23/2023
 Supervised By :Ankita Jodhani 10/23/2023

Integration File: autoint1.e
 Quant Time: Oct 20 12:18:25 2023
 Quant Method : Z:\pestpcbsrv\HPCHEM1\FID_E\methods\Aliphatic EPH 101223.M
 Quant Title : GC Extractables
 QLast Update : Thu Oct 12 06:15:32 2023
 Response via : Initial Calibration
 Integrator: ChemStation

Volume Inj. : 1 ul
 Signal Phase : Rxi-1ms
 Signal Info : 20M x 0.18mm x 0.18um





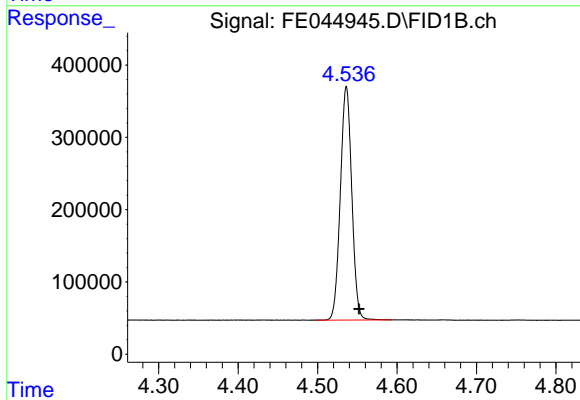
#1 n-Nonane (C9)

R.T.: 3.285 min
Delta R.T.: -0.016 min
Response: 3079465
Conc: 18.36 ug/ml

Instrument : FID_E
ClientSampleId : 20 PPM ALIPHATIC HC STD

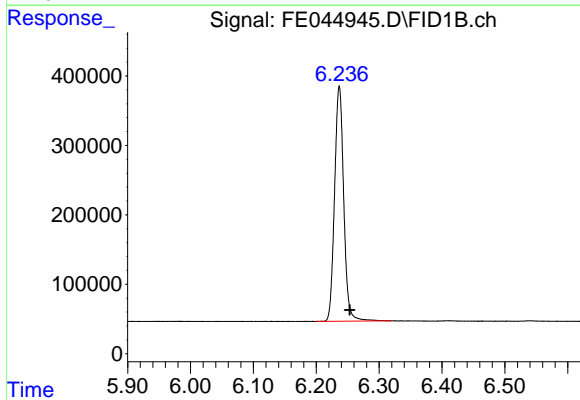
Manual Integrations
APPROVED

Reviewed By :Yogesh Patel 10/23/2023
Supervised By :Ankita Jodhani 10/23/2023



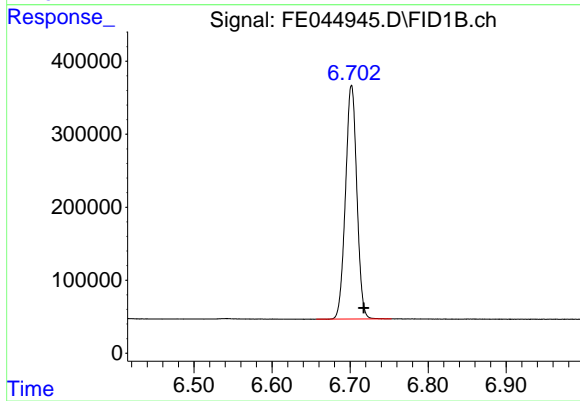
#2 n-Decane (C10)

R.T.: 4.536 min
Delta R.T.: -0.016 min
Response: 3229070
Conc: 18.96 ug/ml



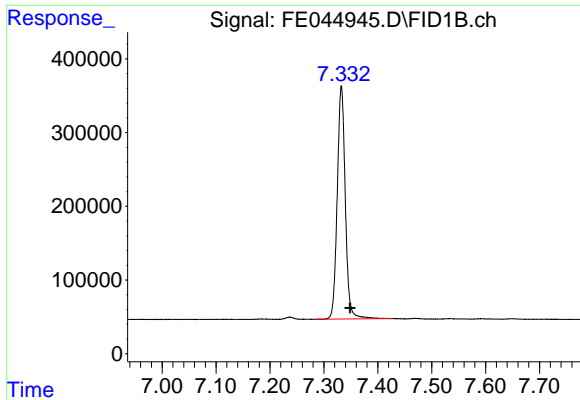
#3 A~Naphthalene (C11.7)

R.T.: 6.237 min
Delta R.T.: -0.016 min
Response: 3426590
Conc: 18.51 ug/ml



#4 n-Dodecane (C12)

R.T.: 6.702 min
Delta R.T.: -0.016 min
Response: 3240316
Conc: 18.77 ug/ml



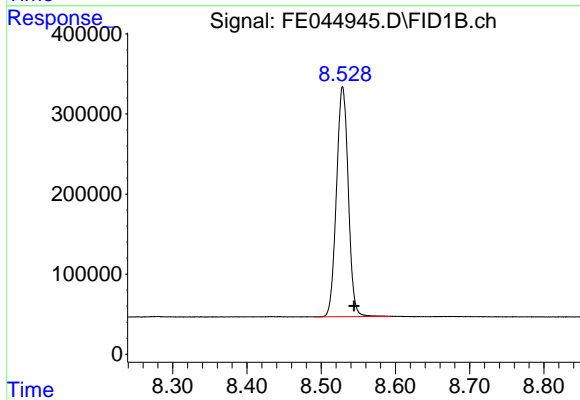
#5 A~2-methylnaphthalene (C12.89)

R.T.: 7.333 min
 Delta R.T.: -0.016 min
 Response: 3295869
 Conc: 18.27 ug/ml

Instrument : FID_E
 ClientSampleId : 20 PPM ALIPHATIC HC STD

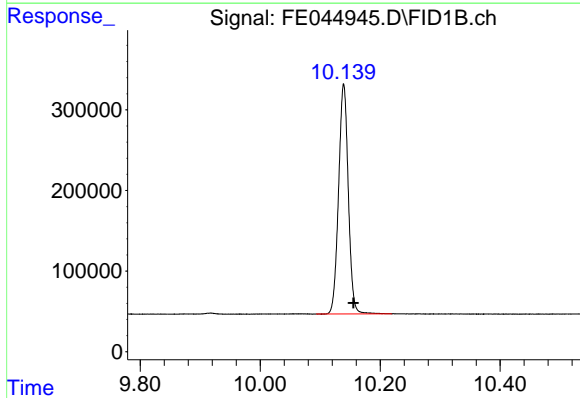
Manual Integrations
 APPROVED

Reviewed By :Yogesh Patel 10/23/2023
 Supervised By :Ankita Jodhani 10/23/2023



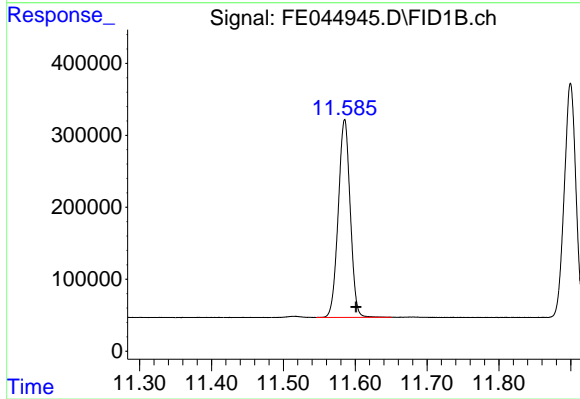
#6 n-Tetradecane (C14)

R.T.: 8.529 min
 Delta R.T.: -0.015 min
 Response: 3177537
 Conc: 18.53 ug/ml



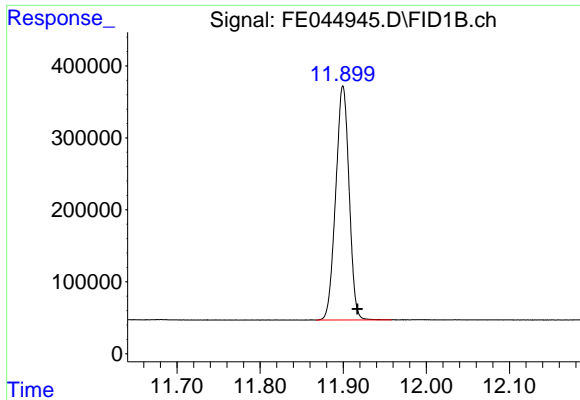
#7 n-Hexadecane (C16)

R.T.: 10.139 min
 Delta R.T.: -0.016 min
 Response: 3202194
 Conc: 18.31 ug/ml



#8 n-Octadecane (C18)

R.T.: 11.585 min
 Delta R.T.: -0.016 min
 Response: 3172837
 Conc: 18.19 ug/ml



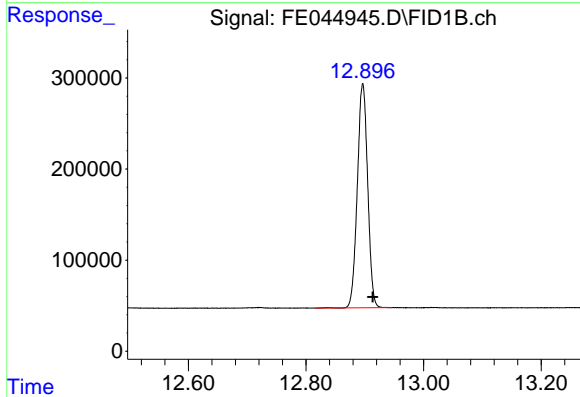
#9 ortho-Terphenyl (SURR)

R.T.: 11.900 min
 Delta R.T.: -0.017 min
 Response: 3636284
 Conc: 18.14 ug/ml

Instrument : FID_E
 ClientSampleId : 20 PPM ALIPHATIC HC STD

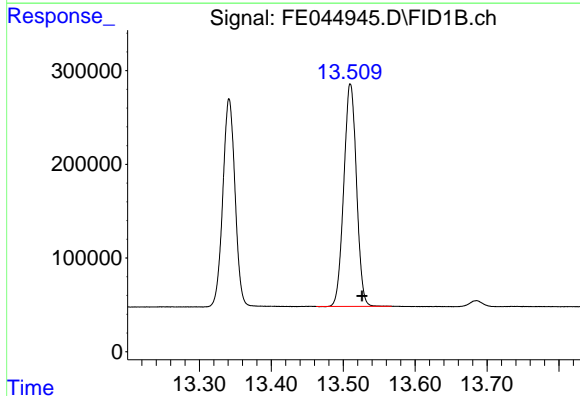
Manual Integrations
 APPROVED

Reviewed By :Yogesh Patel 10/23/2023
 Supervised By :Ankita Jodhani 10/23/2023



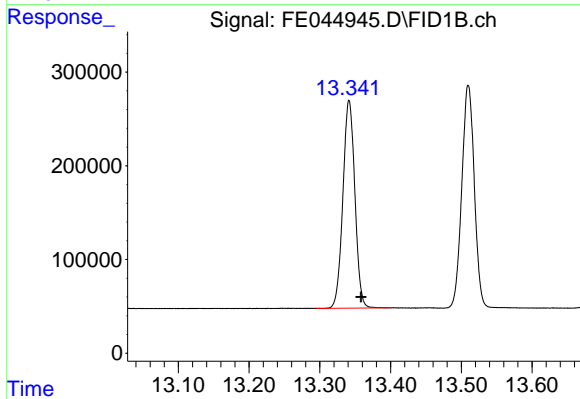
#10 n-Eicosane (C20)

R.T.: 12.897 min
 Delta R.T.: -0.017 min
 Response: 3009286
 Conc: 18.02 ug/ml



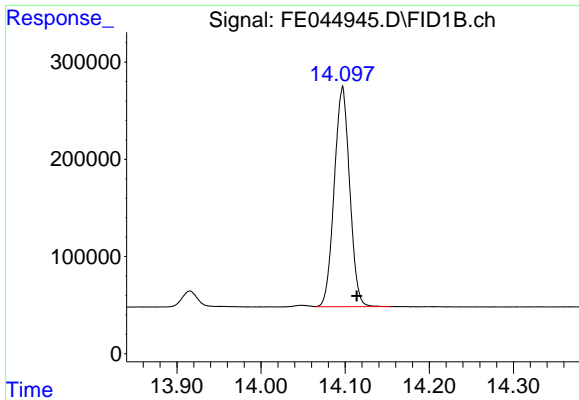
#11 n-Heneicosane (C21)

R.T.: 13.510 min
 Delta R.T.: -0.017 min
 Response: 2917952
 Conc: 17.90 ug/ml



#12 1-chlorooctadecane (SURR)

R.T.: 13.341 min
 Delta R.T.: -0.017 min
 Response: 2609988
 Conc: 17.64 ug/ml

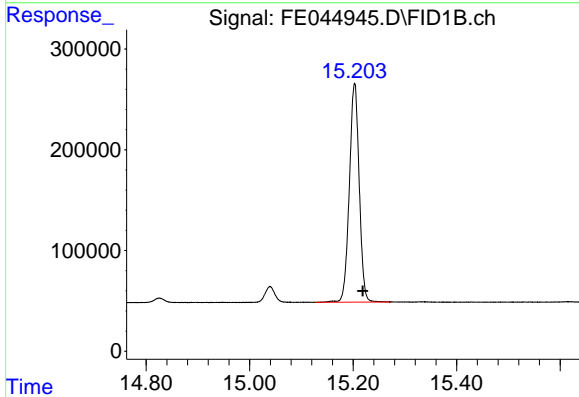


#13 n-Docosane (C22)
R.T.: 14.097 min
Delta R.T.: -0.017 min
Response: 2887085
Conc: 18.05 ug/ml

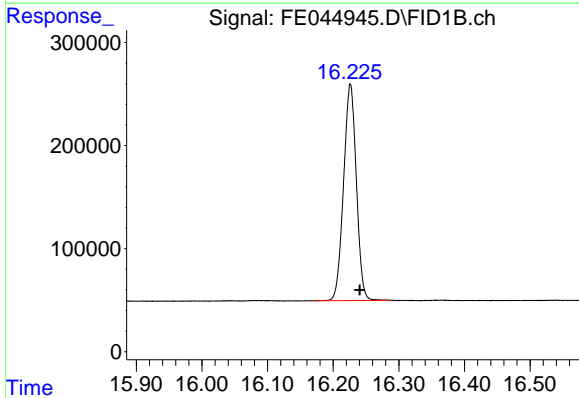
Instrument : FID_E
ClientSampleId : 20 PPM ALIPHATIC HC STD

Manual Integrations
APPROVED

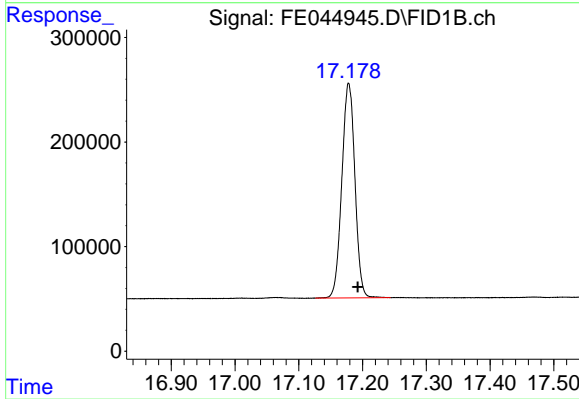
Reviewed By :Yogesh Patel 10/23/2023
Supervised By :Ankita Jodhani 10/23/2023



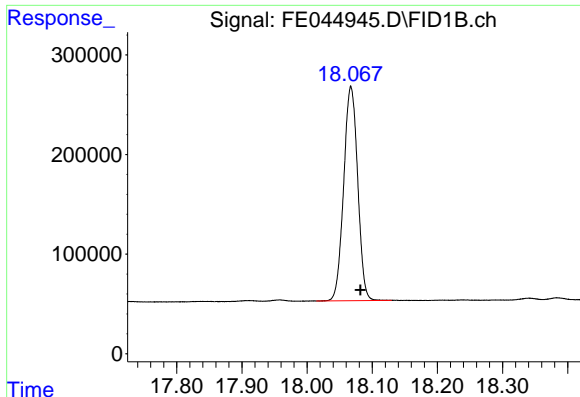
#14 n-Tetracosane (C24)
R.T.: 15.203 min
Delta R.T.: -0.016 min
Response: 2868574
Conc: 18.48 ug/ml



#15 n-Hexacosane (C26)
R.T.: 16.226 min
Delta R.T.: -0.014 min
Response: 2834948
Conc: 18.88 ug/ml



#16 n-Octacosane (C28)
R.T.: 17.178 min
Delta R.T.: -0.014 min
Response: 2928846
Conc: 19.95 ug/ml



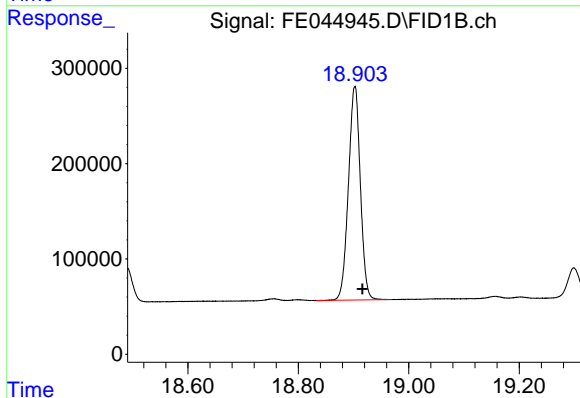
#17 n-Tricontane (C30)

R.T.: 18.067 min
 Delta R.T.: -0.014 min
 Response: 3206282
 Conc: 21.56 ug/ml

Instrument :
 FID_E
 ClientSampleId :
 20 PPM ALIPHATIC HC STD

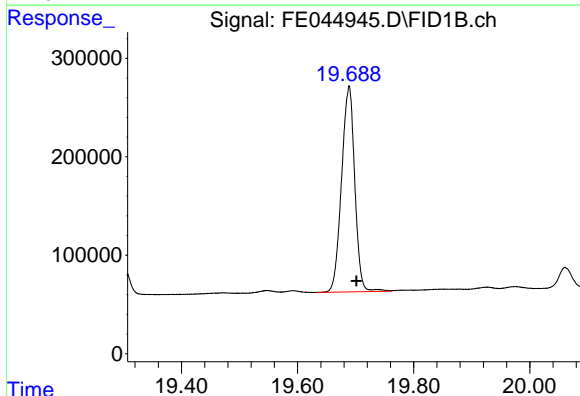
Manual Integrations
 APPROVED

Reviewed By :Yogesh Patel 10/23/2023
 Supervised By :Ankita Jodhani 10/23/2023



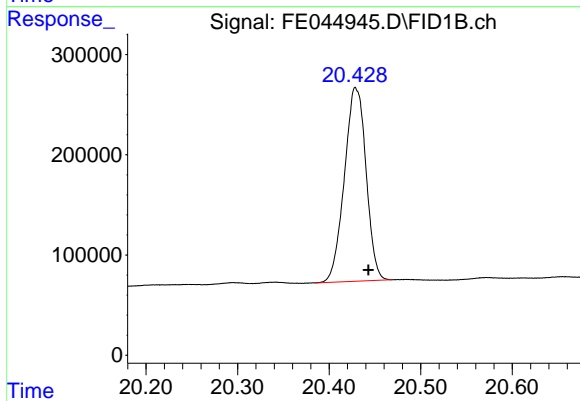
#18 n-Dotriacontane (C32)

R.T.: 18.903 min
 Delta R.T.: -0.014 min
 Response: 3366397
 Conc: 22.43 ug/ml



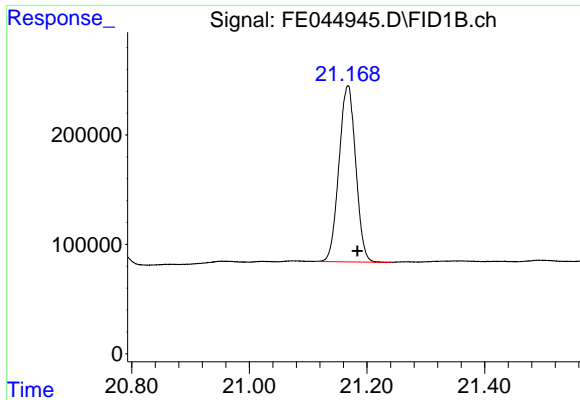
#19 n-Tetratriacontane (C34)

R.T.: 19.689 min
 Delta R.T.: -0.013 min
 Response: 3297074
 Conc: 22.15 ug/ml



#20 n-Hexatriacontane (C36)

R.T.: 20.428 min
 Delta R.T.: -0.015 min
 Response: 3178991
 Conc: 20.68 ug/ml m



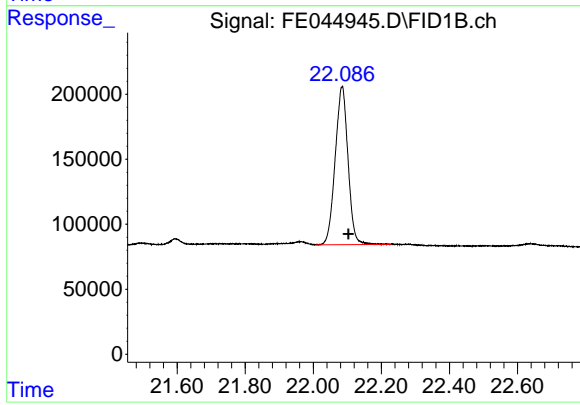
#21 n-Octatriacontane (C38)

R.T.: 21.168 min
 Delta R.T.: -0.016 min
 Response: 3182812
 Conc: 20.38 ug/ml

Instrument : FID_E
 ClientSampleId : 20 PPM ALIPHATIC HC STD

Manual Integrations
 APPROVED

Reviewed By :Yogesh Patel 10/23/2023
 Supervised By :Ankita Jodhani 10/23/2023



#22 n-Tetracontane (C40)

R.T.: 22.085 min
 Delta R.T.: -0.018 min
 Response: 3189217
 Conc: 19.08 ug/ml