

Data Path : Z:\pestpcbsrv\HPCHEM1\FID_E\Data\FE102023AL\
 Data File : FE044962.D
 Signal(s) : FID1B.ch
 Acq On : 21 Oct 2023 00:14
 Operator : YP\AJ
 Sample : 04977-04
 Misc :
 ALS Vial : 22 Sample Multiplier: 1

Instrument :
 FID_E
 ClientSampleId :
 NB-406-01

Integration File: autoint1.e
 Quant Time: Oct 21 03:31:50 2023
 Quant Method : Z:\pestpcbsrv\HPCHEM1\FID_E\methods\Aliphatic EPH 101223.M
 Quant Title : GC Extractables
 QLast Update : Thu Oct 12 06:15:32 2023
 Response via : Initial Calibration
 Integrator: ChemStation

Volume Inj. : 1 ul
 Signal Phase : Rxi-1ms
 Signal Info : 20M x 0.18mm x 0.18um

Compound	R.T.	Response	Conc Units

System Monitoring Compounds			
9) S ortho-Terphenyl (SURR)	11.901	5919597	29.529 ug/ml
Spiked Amount	50.000	Recovery	= 59.06%
12) S 1-chlorooctadecane (S...	13.344	4389113	29.659 ug/ml
Spiked Amount	50.000	Recovery	= 59.32%

Target Compounds

(f)=RT Delta > 1/2 Window

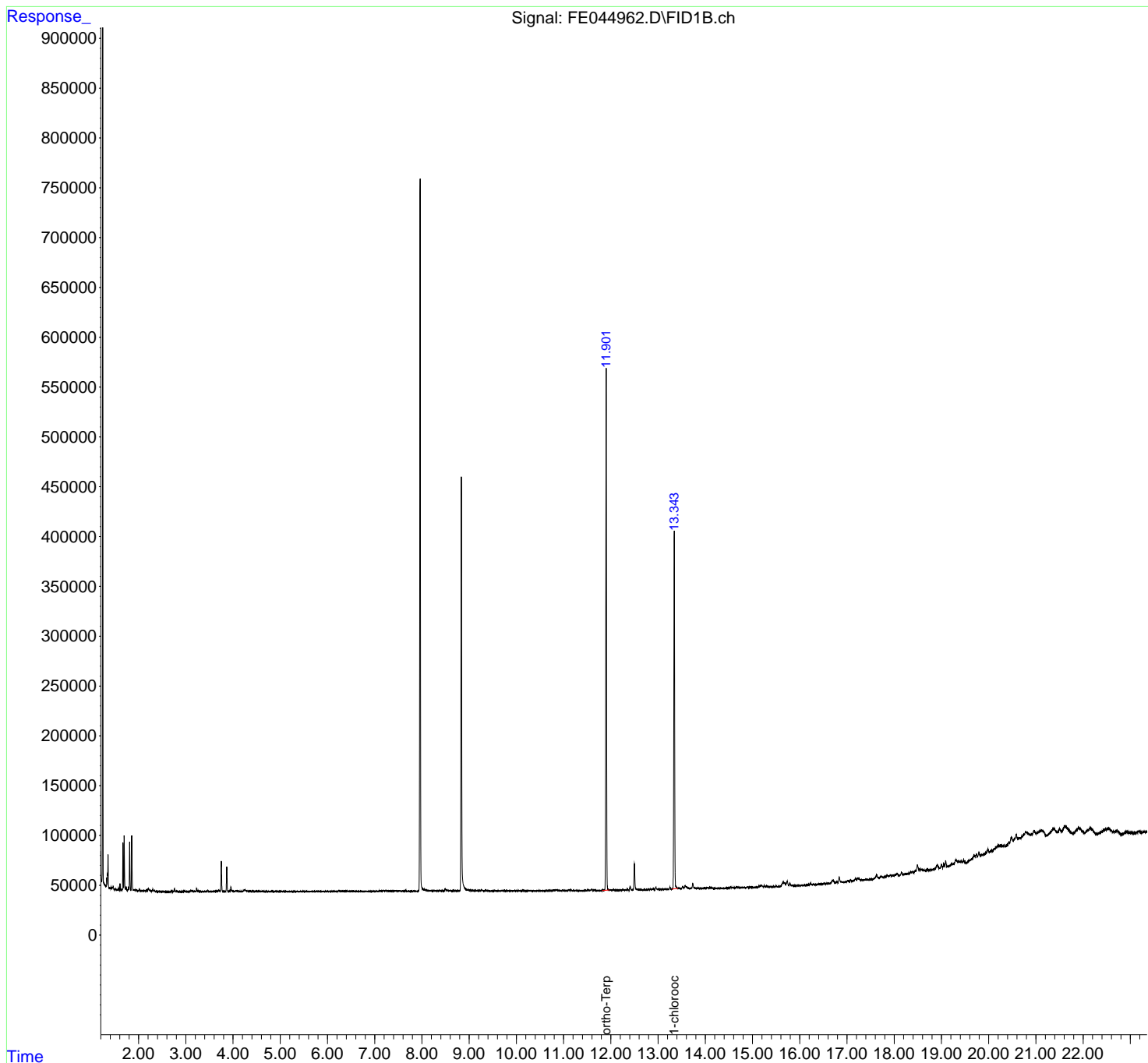
(m)=manual int.

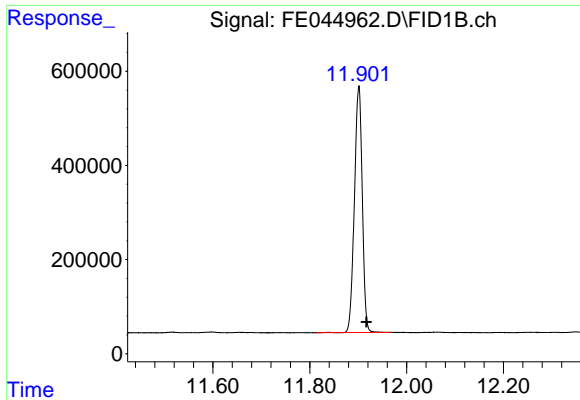
Data Path : Z:\pestpcbsrv\HPCHEM1\FID_E\Data\FE102023AL\
 Data File : FE044962.D
 Signal(s) : FID1B.ch
 Acq On : 21 Oct 2023 00:14
 Operator : YP\AJ
 Sample : 04977-04
 Misc :
 ALS Vial : 22 Sample Multiplier: 1

Instrument :
 FID_E
 ClientSampleId :
 NB-406-01

Integration File: autoint1.e
 Quant Time: Oct 21 03:31:50 2023
 Quant Method : Z:\pestpcbsrv\HPCHEM1\FID_E\methods\Aliphatic EPH 101223.M
 Quant Title : GC Extractables
 QLast Update : Thu Oct 12 06:15:32 2023
 Response via : Initial Calibration
 Integrator: ChemStation

Volume Inj. : 1 ul
 Signal Phase : Rxi-1ms
 Signal Info : 20M x 0.18mm x 0.18um

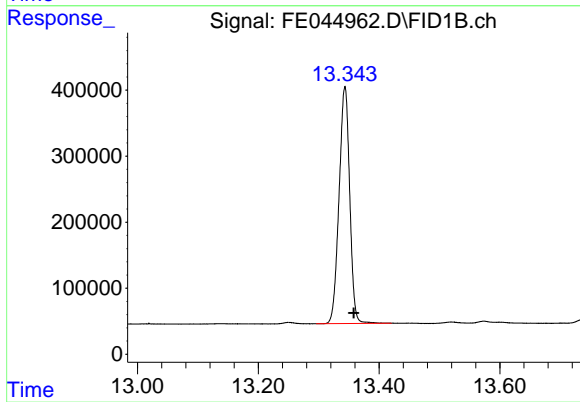




#9 ortho-Terphenyl (SURR)

R.T.: 11.901 min
Delta R.T.: -0.016 min
Response: 5919597
Conc: 29.53 ug/ml

Instrument :
FID_E
ClientSampleId :
NB-406-01



#12 1-chlorooctadecane (SURR)

R.T.: 13.344 min
Delta R.T.: -0.015 min
Response: 4389113
Conc: 29.66 ug/ml