

Data Path : Z:\pestpcbsrv\HPCHEM1\FID_E\Data\FE102124AL\
 Data File : FE050751.D
 Signal(s) : FID1B.ch
 Acq On : 21 Oct 2024 20:08
 Operator : YP\AJ
 Sample : P4458-01MS
 Misc :
 ALS Vial : 24 Sample Multiplier: 1

Instrument :
 FID_E
 ClientSampleId :

Integration File: autoint1.e
 Quant Time: Oct 22 04:49:07 2024
 Quant Method : Z:\pestpcbsrv\HPCHEM1\FID_E\methods\Aliphatic EPH 100824.M
 Quant Title : GC Extractables
 QLast Update : Mon Oct 07 16:32:18 2024
 Response via : Initial Calibration
 Integrator: ChemStation

Volume Inj. : 1 ul
 Signal Phase : Rxi-1ms
 Signal Info : 20M x 0.18mm x 0.18um

Compound	R.T.	Response	Conc Units

System Monitoring Compounds			
9) S ortho-Terphenyl (SURR)	11.867	4109500	26.066 ug/ml
Spiked Amount	50.000	Recovery	= 52.13%
12) S 1-chlorooctadecane (S...	13.300	3538776	29.915 ug/ml
Spiked Amount	50.000	Recovery	= 59.83%
Target Compounds			
1) T n-Nonane (C9)	3.252	3956255	28.001 ug/ml
2) T n-Decane (C10)	4.504	4448792	31.007 ug/ml
3) T A~Naphthalene (C11.7)	6.214	5003659	34.993 ug/ml
4) T n-Dodecane (C12)	6.671	4914084	34.141 ug/ml
5) T A~2-methylnaphthalene...	7.311	4929798	37.212 ug/ml
6) T n-Tetradecane (C14)	8.500	5383561	37.630 ug/ml
7) T n-Hexadecane (C16)	10.105	5692492	38.680 ug/ml
8) T n-Octadecane (C18)	11.546	5920274	39.635 ug/ml
10) T n-Eicosane (C20)	12.856	6077584	42.382 ug/ml
11) T n-Heneicosane (C21)	13.466	5893831	41.969 ug/ml
13) T n-Docosane (C22)	14.052	5823867	41.511 ug/ml
14) T n-Tetracosane (C24)	15.155	10893572	77.108 ug/ml
15) T n-Hexacosane (C26)	16.176	5805164	41.254 ug/ml
16) T n-Octacosane (C28)	17.124	6205890	42.410 ug/ml
17) T n-Tricontane (C30)	18.011	6183391	38.889 ug/ml
18) T n-Dotriacontane (C32)	18.844	6248071	38.541 ug/ml
19) T n-Tetratriacontane (C34)	19.627	6536211	44.497 ug/ml
20) T n-Hexatriacontane (C36)	20.367	6584051	51.919 ug/ml
21) T n-Octatriacontane (C38)	21.093	6864348	55.516 ug/ml
22) T n-Tetracontane (C40)	21.983	6052524	54.356 ug/ml

(f)=RT Delta > 1/2 Window

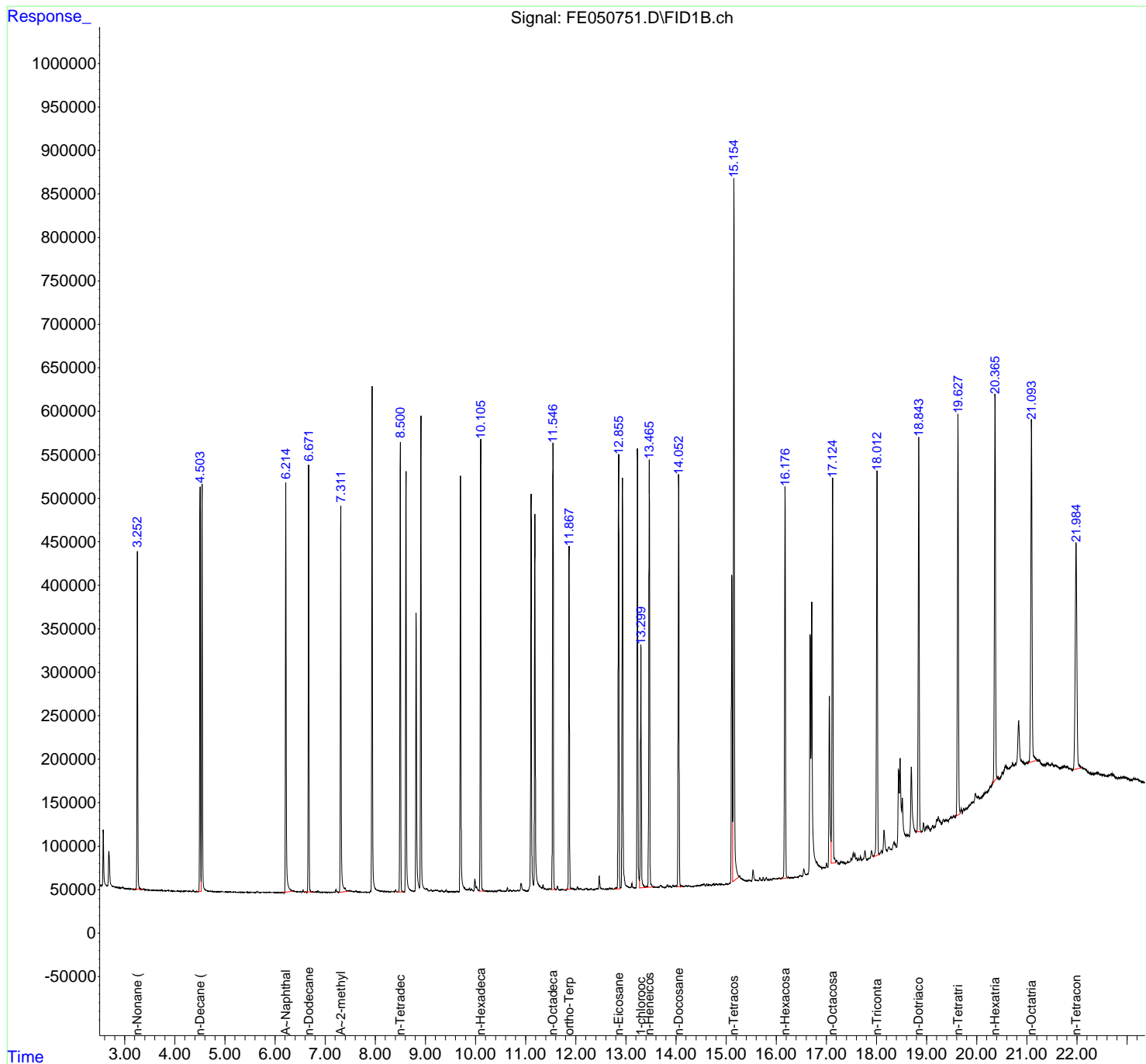
(m)=manual int.

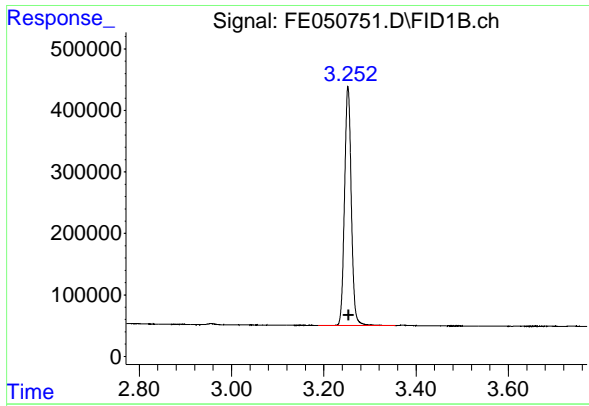
Data Path : Z:\pestpcbsrv\HPCHEM1\FID_E\Data\FE102124AL\
 Data File : FE050751.D
 Signal(s) : FID1B.ch
 Acq On : 21 Oct 2024 20:08
 Operator : YP\AJ
 Sample : P4458-01MS
 Misc :
 ALS Vial : 24 Sample Multiplier: 1

Instrument :
 FID_E
 ClientSampleId :

Integration File: autoint1.e
 Quant Time: Oct 22 04:49:07 2024
 Quant Method : Z:\pestpcbsrv\HPCHEM1\FID_E\methods\Aliphatic EPH 100824.M
 Quant Title : GC Extractables
 QLast Update : Mon Oct 07 16:32:18 2024
 Response via : Initial Calibration
 Integrator: ChemStation

Volume Inj. : 1 ul
 Signal Phase : Rxi-1ms
 Signal Info : 20M x 0.18mm x 0.18um

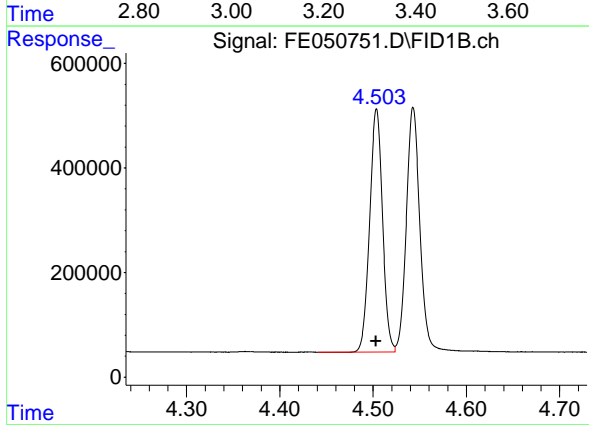




#1 n-Nonane (C9)

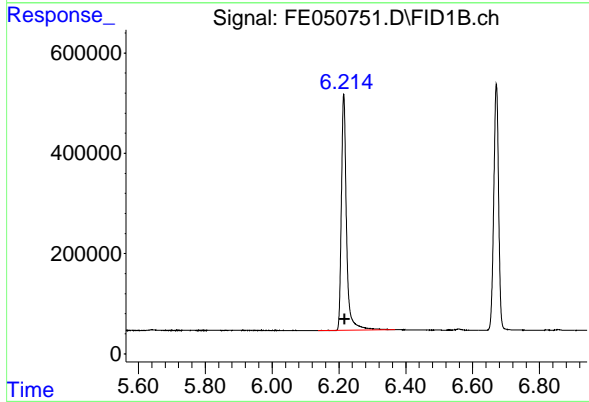
R.T.: 3.252 min
 Delta R.T.: -0.002 min
 Response: 3956255
 Conc: 28.00 ug/ml

Instrument :
 FID_E
 ClientSampleId :



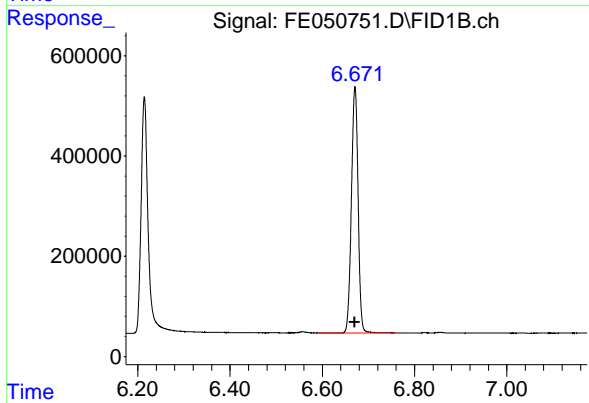
#2 n-Decane (C10)

R.T.: 4.504 min
 Delta R.T.: 0.000 min
 Response: 4448792
 Conc: 31.01 ug/ml



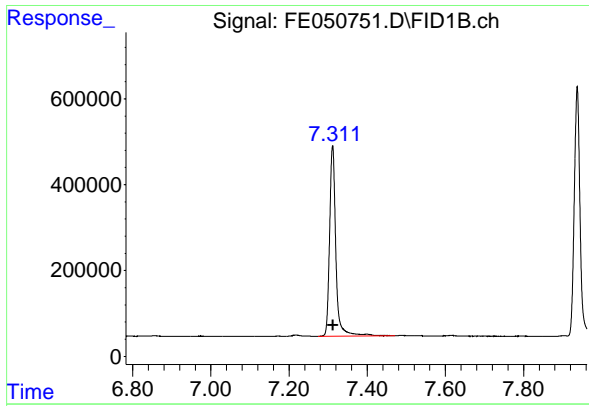
#3 A~Naphthalene (C11.7)

R.T.: 6.214 min
 Delta R.T.: -0.002 min
 Response: 5003659
 Conc: 34.99 ug/ml



#4 n-Dodecane (C12)

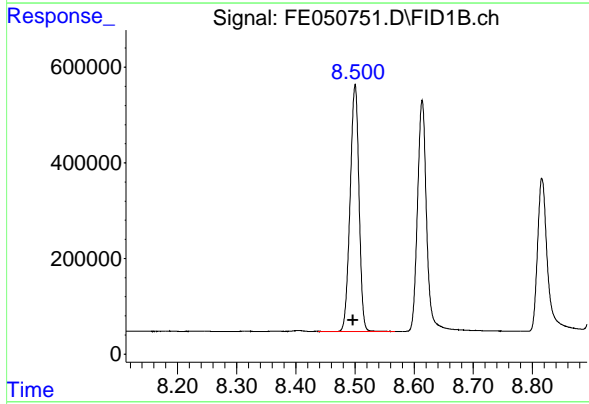
R.T.: 6.671 min
 Delta R.T.: 0.001 min
 Response: 4914084
 Conc: 34.14 ug/ml



#5 A~2-methylnaphthalene (C12.89)

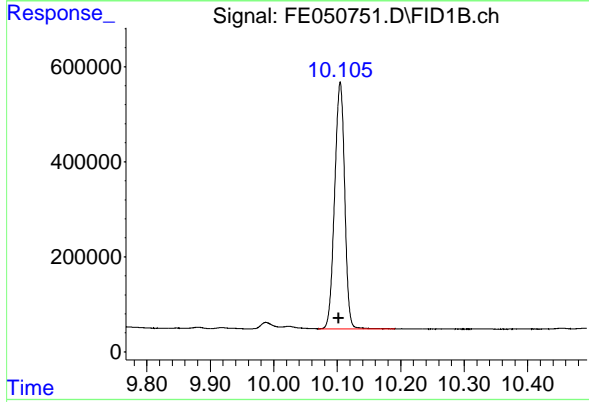
R.T.: 7.311 min
Delta R.T.: -0.001 min
Response: 4929798
Conc: 37.21 ug/ml

Instrument :
FID_E
ClientSampleId :



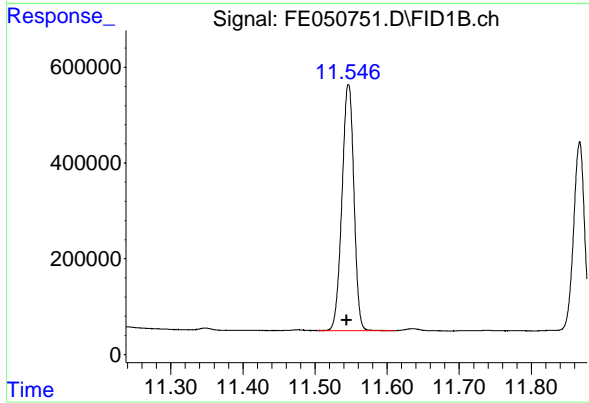
#6 n-Tetradecane (C14)

R.T.: 8.500 min
Delta R.T.: 0.004 min
Response: 5383561
Conc: 37.63 ug/ml



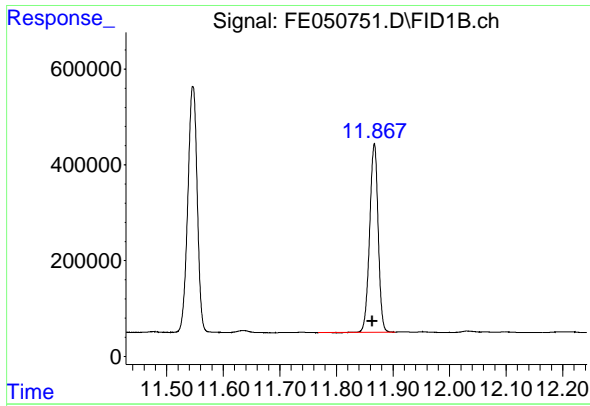
#7 n-Hexadecane (C16)

R.T.: 10.105 min
Delta R.T.: 0.002 min
Response: 5692492
Conc: 38.68 ug/ml



#8 n-Octadecane (C18)

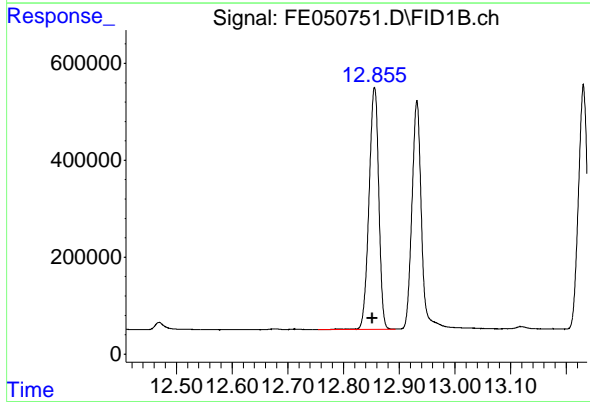
R.T.: 11.546 min
Delta R.T.: 0.003 min
Response: 5920274
Conc: 39.64 ug/ml



#9 ortho-Terphenyl (SURR)

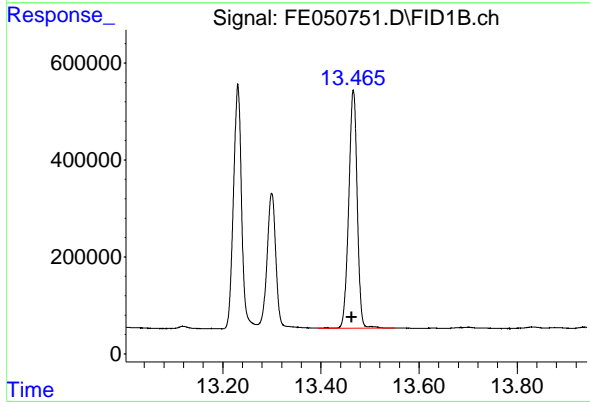
R.T.: 11.867 min
 Delta R.T.: 0.004 min
 Response: 4109500
 Conc: 26.07 ug/ml

Instrument :
 FID_E
 ClientSampleId :



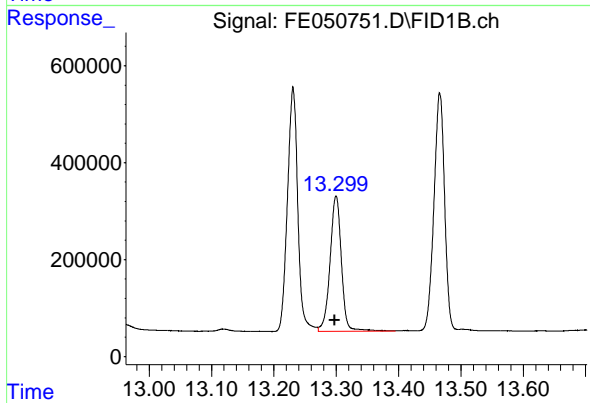
#10 n-Eicosane (C20)

R.T.: 12.856 min
 Delta R.T.: 0.004 min
 Response: 6077584
 Conc: 42.38 ug/ml



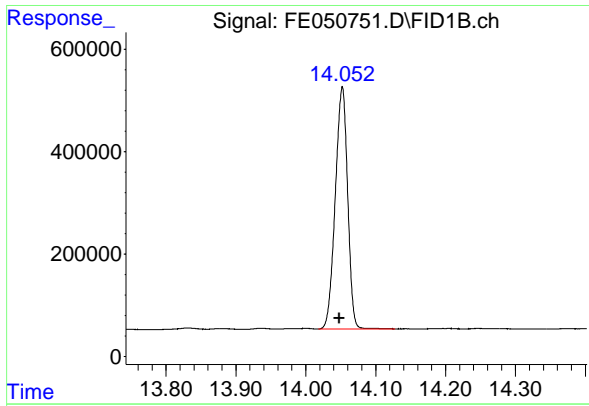
#11 n-Heneicosane (C21)

R.T.: 13.466 min
 Delta R.T.: 0.004 min
 Response: 5893831
 Conc: 41.97 ug/ml



#12 1-chlorooctadecane (SURR)

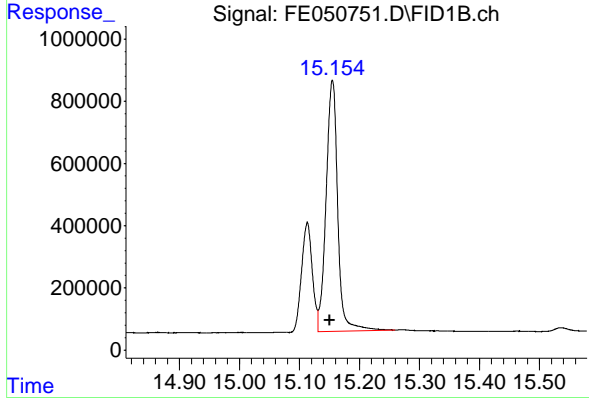
R.T.: 13.300 min
 Delta R.T.: 0.002 min
 Response: 3538776
 Conc: 29.92 ug/ml



#13 n-Docosane (C22)

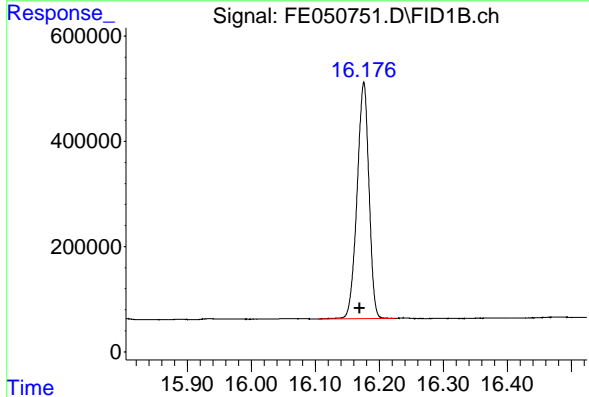
R.T.: 14.052 min
 Delta R.T.: 0.004 min
 Response: 5823867
 Conc: 41.51 ug/ml

Instrument : FID_E
 ClientSampleId :



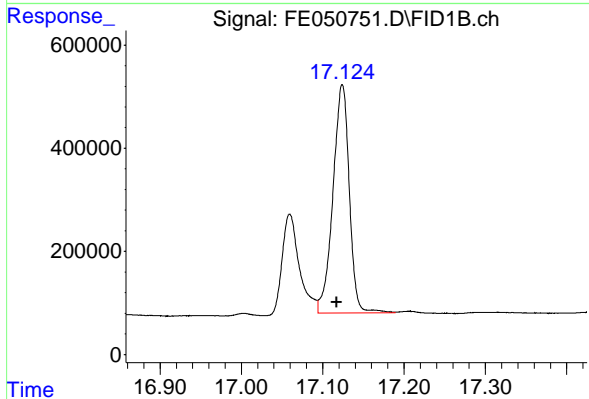
#14 n-Tetracosane (C24)

R.T.: 15.155 min
 Delta R.T.: 0.005 min
 Response: 10893572
 Conc: 77.11 ug/ml



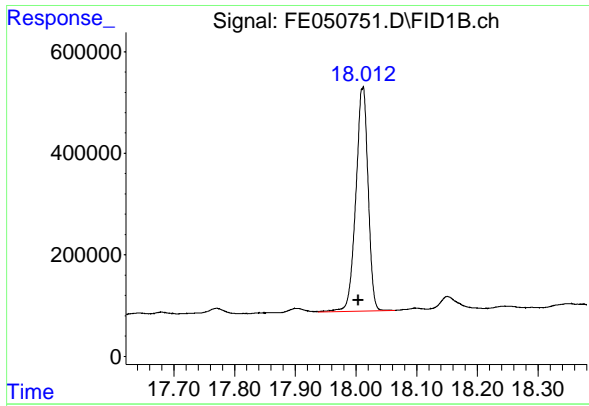
#15 n-Hexacosane (C26)

R.T.: 16.176 min
 Delta R.T.: 0.006 min
 Response: 5805164
 Conc: 41.25 ug/ml



#16 n-Octacosane (C28)

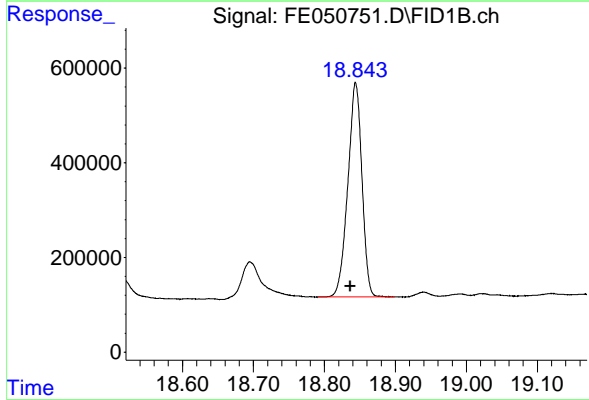
R.T.: 17.124 min
 Delta R.T.: 0.007 min
 Response: 6205890
 Conc: 42.41 ug/ml



#17 n-Tricontane (C30)

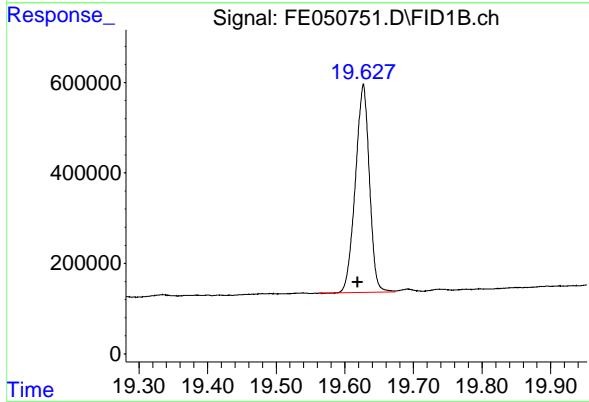
R.T.: 18.011 min
Delta R.T.: 0.007 min
Response: 6183391
Conc: 38.89 ug/ml

Instrument :
FID_E
ClientSampleId :



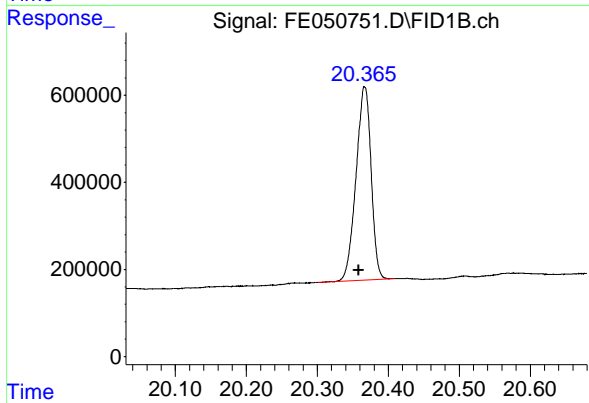
#18 n-Dotriacontane (C32)

R.T.: 18.844 min
Delta R.T.: 0.008 min
Response: 6248071
Conc: 38.54 ug/ml



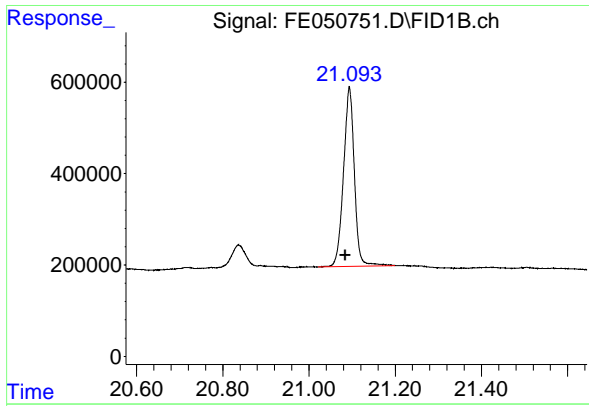
#19 n-Tetracontane (C34)

R.T.: 19.627 min
Delta R.T.: 0.008 min
Response: 6536211
Conc: 44.50 ug/ml



#20 n-Hexatriacontane (C36)

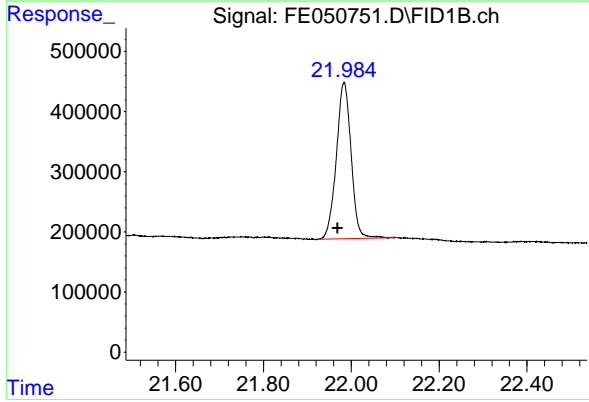
R.T.: 20.367 min
Delta R.T.: 0.008 min
Response: 6584051
Conc: 51.92 ug/ml



#21 n-Octatriacontane (C38)

R.T.: 21.093 min
Delta R.T.: 0.009 min
Response: 6864348
Conc: 55.52 ug/ml

Instrument :
FID_E
ClientSampleId :



#22 n-Tetracontane (C40)

R.T.: 21.983 min
Delta R.T.: 0.014 min
Response: 6052524
Conc: 54.36 ug/ml