

Data Path : Z:\pestpcbsrv\HPCHEM1\FID_E\Data\FE102323AL\
 Data File : FE044983.D
 Signal(s) : FID1B.ch
 Acq On : 23 Oct 2023 14:38
 Operator : YP\AJ
 Sample : PB156562BL
 Misc :
 ALS Vial : 16 Sample Multiplier: 1

Integration File: autoint1.e
 Quant Time: Oct 24 00:56:03 2023
 Quant Method : Z:\pestpcbsrv\HPCHEM1\FID_E\methods\Aliphatic EPH 101223.M
 Quant Title : GC Extractables
 QLast Update : Thu Oct 12 06:15:32 2023
 Response via : Initial Calibration
 Integrator: ChemStation

Volume Inj. : 1 ul
 Signal Phase : Rxi-1ms
 Signal Info : 20M x 0.18mm x 0.18um

Compound	R.T.	Response	Conc Units

System Monitoring Compounds			
9) S ortho-Terphenyl (SURR)	11.902	8368056	41.743 ug/ml
Spiked Amount	50.000	Recovery	= 83.49%
12) S 1-chlorooctadecane (S...	13.344	6164254	41.654 ug/ml
Spiked Amount	50.000	Recovery	= 83.31%
Target Compounds			
17) T n-Tricontane (C30)	18.063	68604	0.461 ug/ml
18) T n-Dotriacontane (C32)	18.899	117854	0.785 ug/ml
19) T n-Tetratriacontane (C34)	19.683	71468	0.480 ug/ml
20) T n-Hexatriacontane (C36)	20.427	8535	0.056 ug/ml
21) T n-Octatriacontane (C38)	21.166	94206	0.603 ug/ml
22) T n-Tetracontane (C40)	22.084	51337	0.307 ug/ml

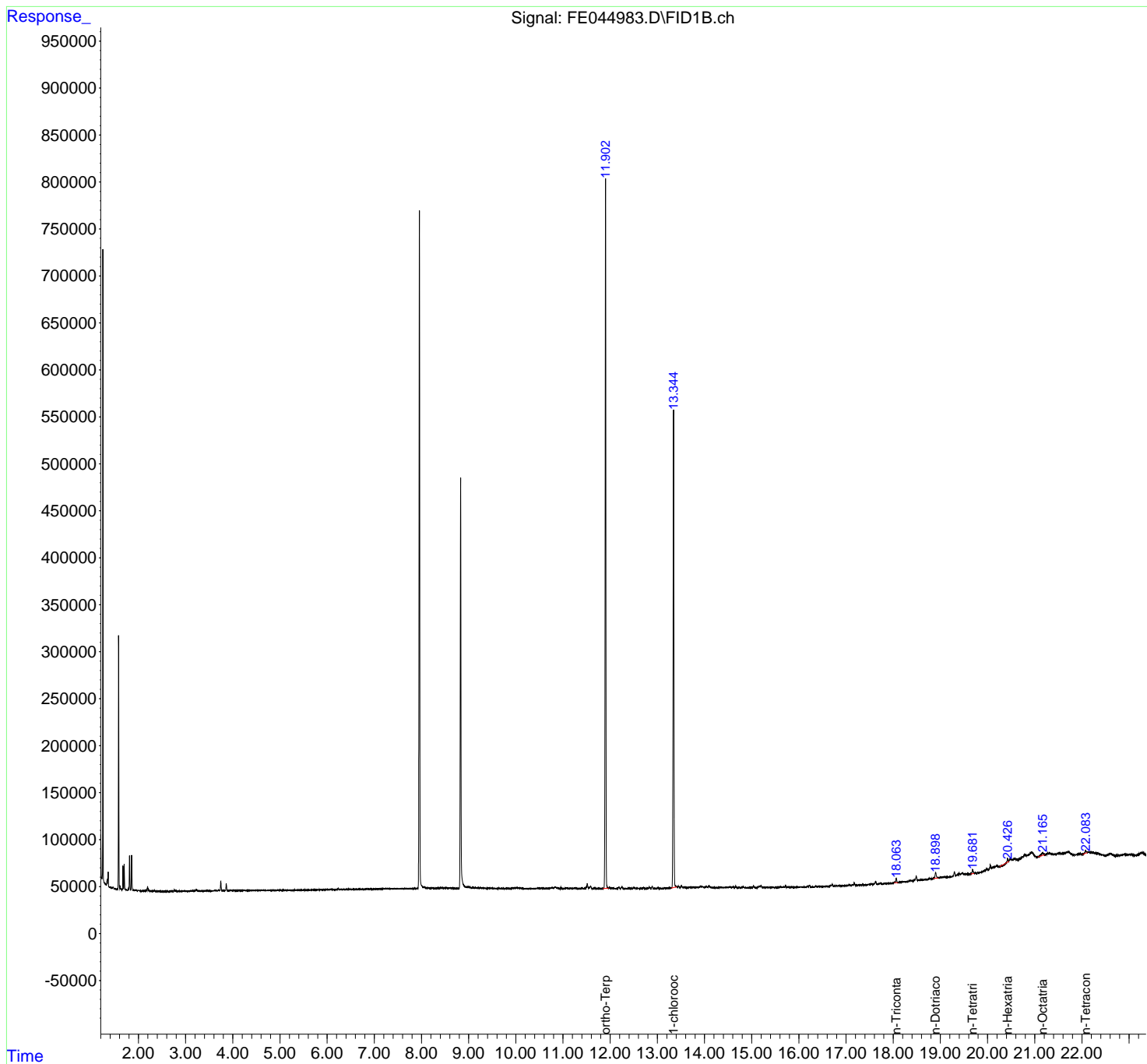
(f)=RT Delta > 1/2 Window

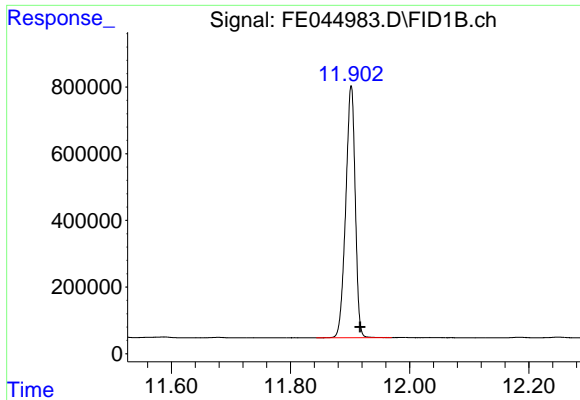
(m)=manual int.

Data Path : Z:\pestpcbsrv\HPCHEM1\FID_E\Data\FE102323AL\
 Data File : FE044983.D
 Signal(s) : FID1B.ch
 Acq On : 23 Oct 2023 14:38
 Operator : YP\AJ
 Sample : PB156562BL
 Misc :
 ALS Vial : 16 Sample Multiplier: 1

Integration File: autoint1.e
 Quant Time: Oct 24 00:56:03 2023
 Quant Method : Z:\pestpcbsrv\HPCHEM1\FID_E\methods\Aliphatic EPH 101223.M
 Quant Title : GC Extractables
 QLast Update : Thu Oct 12 06:15:32 2023
 Response via : Initial Calibration
 Integrator: ChemStation

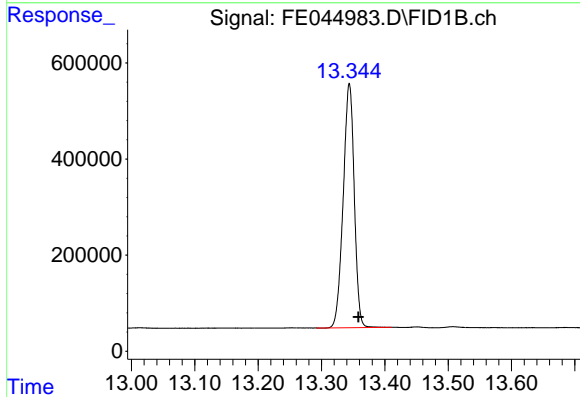
Volume Inj. : 1 ul
 Signal Phase : Rxi-1ms
 Signal Info : 20M x 0.18mm x 0.18um





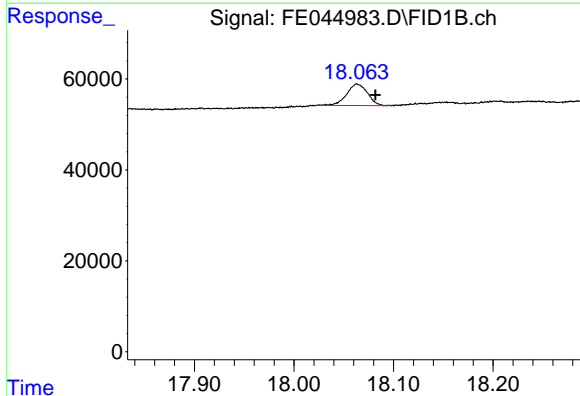
#9 ortho-Terphenyl (SURR)

R.T.: 11.902 min
Delta R.T.: -0.015 min
Response: 8368056
Conc: 41.74 ug/ml



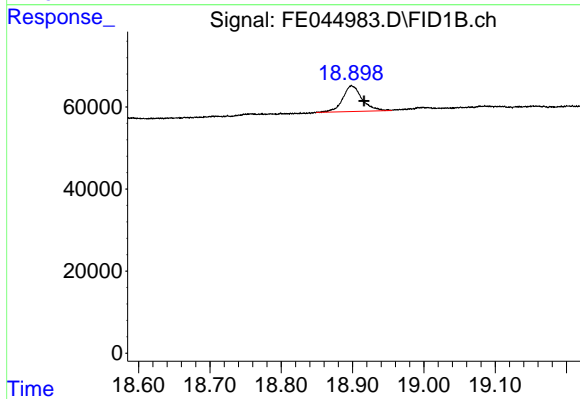
#12 1-chlorooctadecane (SURR)

R.T.: 13.344 min
Delta R.T.: -0.014 min
Response: 6164254
Conc: 41.65 ug/ml



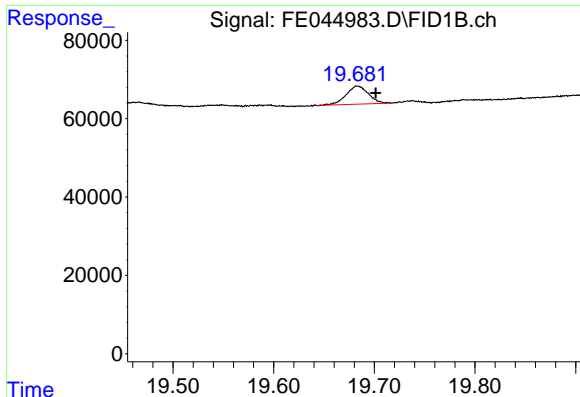
#17 n-Tricontane (C30)

R.T.: 18.063 min
Delta R.T.: -0.019 min
Response: 68604
Conc: 0.46 ug/ml



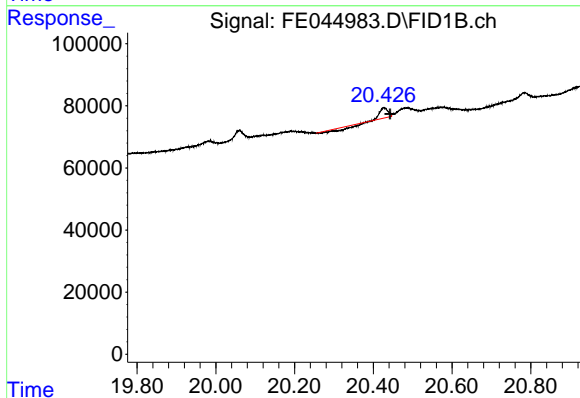
#18 n-Dotriacontane (C32)

R.T.: 18.899 min
Delta R.T.: -0.018 min
Response: 117854
Conc: 0.79 ug/ml



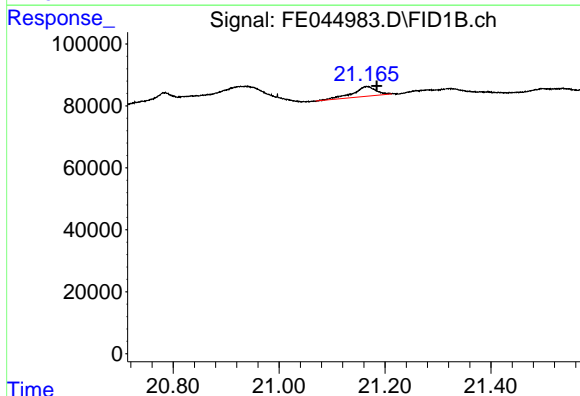
#19 n-Tetratriacontane (C34)

R.T.: 19.683 min
Delta R.T.: -0.018 min
Response: 71468
Conc: 0.48 ug/ml



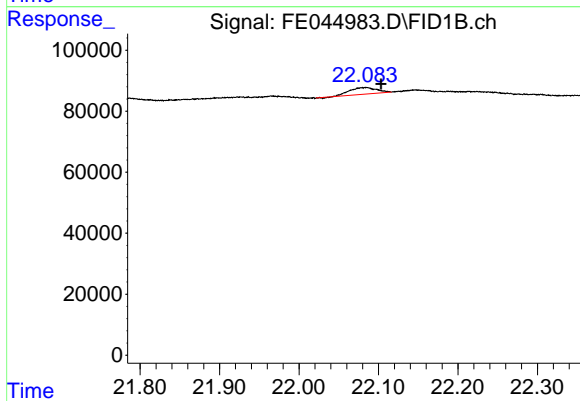
#20 n-Hexatriacontane (C36)

R.T.: 20.427 min
Delta R.T.: -0.016 min
Response: 8535
Conc: 0.06 ug/ml



#21 n-Octatriacontane (C38)

R.T.: 21.166 min
Delta R.T.: -0.018 min
Response: 94206
Conc: 0.60 ug/ml



#22 n-Tetracontane (C40)

R.T.: 22.084 min
Delta R.T.: -0.019 min
Response: 51337
Conc: 0.31 ug/ml