

Data Path : Z:\pestpcbsrv\HPCHEM1\FID\_E\Data\FE102324AL\  
 Data File : FE050788.D  
 Signal(s) : FID1B.ch  
 Acq On : 23 Oct 2024 13:18  
 Operator : YP\AJ  
 Sample : PB164337BL  
 Misc :  
 ALS Vial : 11 Sample Multiplier: 1

**Instrument :**  
 FID\_E  
**ClientSampleId :**  
 PB164337BL

Integration File: autoint1.e  
 Quant Time: Oct 24 02:29:59 2024  
 Quant Method : Z:\pestpcbsrv\HPCHEM1\FID\_E\methods\Aliphatic EPH 100824.M  
 Quant Title : GC Extractables  
 QLast Update : Mon Oct 07 16:32:18 2024  
 Response via : Initial Calibration  
 Integrator: ChemStation

Volume Inj. : 1 ul  
 Signal Phase : Rxi-1ms  
 Signal Info : 20M x 0.18mm x 0.18um

Compound	R.T.	Response	Conc Units
-----			
System Monitoring Compounds			
9) S ortho-Terphenyl (SURR)	11.861	7045539	44.689 ug/ml
Spiked Amount	50.000	Recovery	= 89.38%
12) S 1-chlorooctadecane (S...	13.295	5600847	47.347 ug/ml
Spiked Amount	50.000	Recovery	= 94.69%

Target Compounds

-----

(f)=RT Delta > 1/2 Window

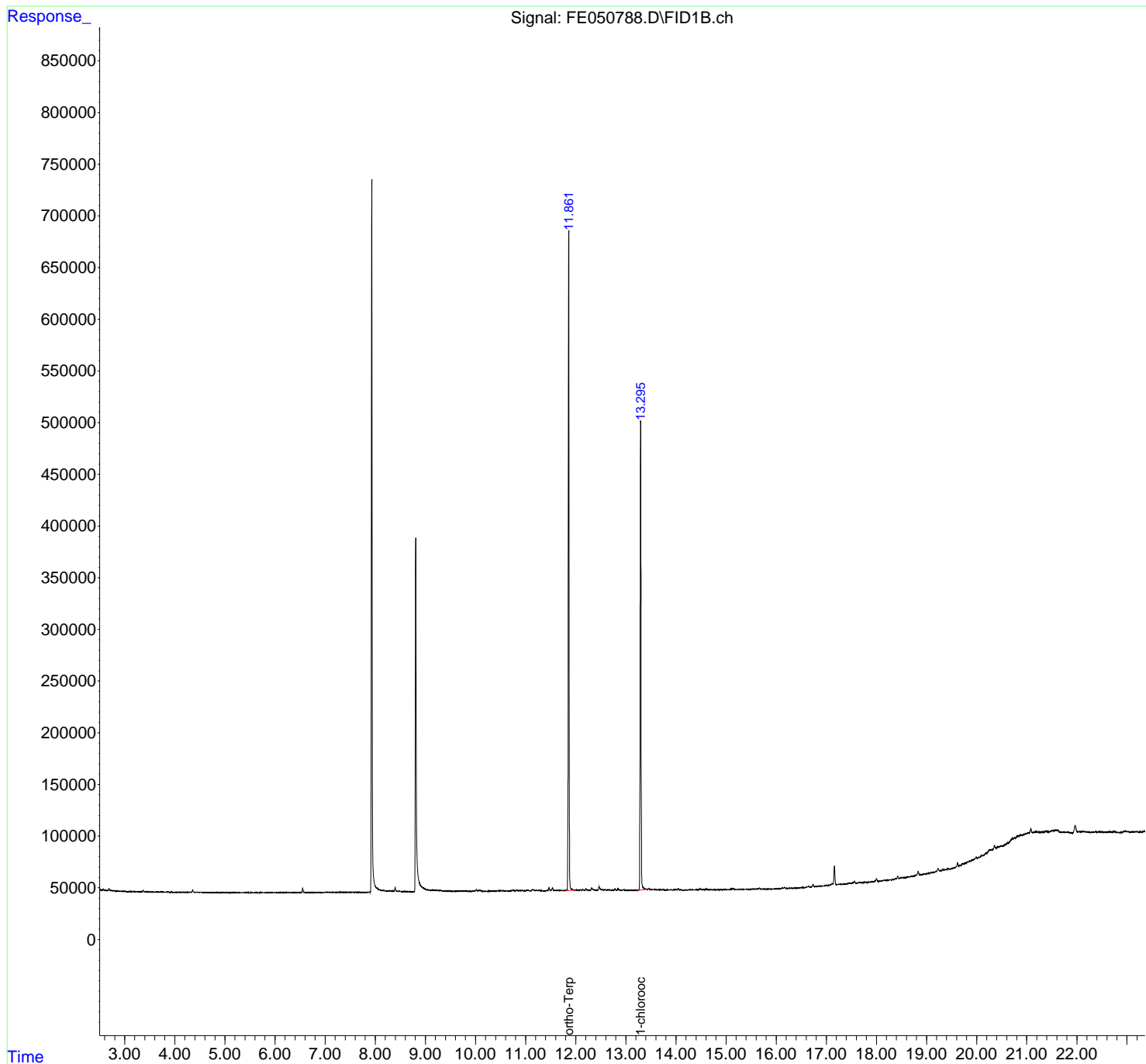
(m)=manual int.

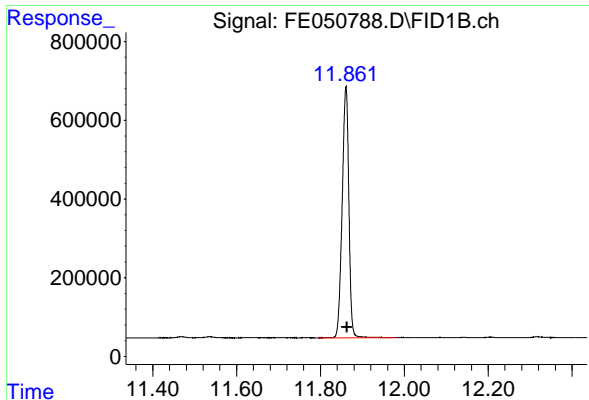
Data Path : Z:\pestpcbsrv\HPCHEM1\FID\_E\Data\FE102324AL\  
 Data File : FE050788.D  
 Signal(s) : FID1B.ch  
 Acq On : 23 Oct 2024 13:18  
 Operator : YP\AJ  
 Sample : PB164337BL  
 Misc :  
 ALS Vial : 11 Sample Multiplier: 1

Instrument :  
 FID\_E  
 ClientSampleId :  
 PB164337BL

Integration File: autoint1.e  
 Quant Time: Oct 24 02:29:59 2024  
 Quant Method : Z:\pestpcbsrv\HPCHEM1\FID\_E\methods\Aliphatic EPH 100824.M  
 Quant Title : GC Extractables  
 QLast Update : Mon Oct 07 16:32:18 2024  
 Response via : Initial Calibration  
 Integrator: ChemStation

Volume Inj. : 1 ul  
 Signal Phase : Rxi-1ms  
 Signal Info : 20M x 0.18mm x 0.18um

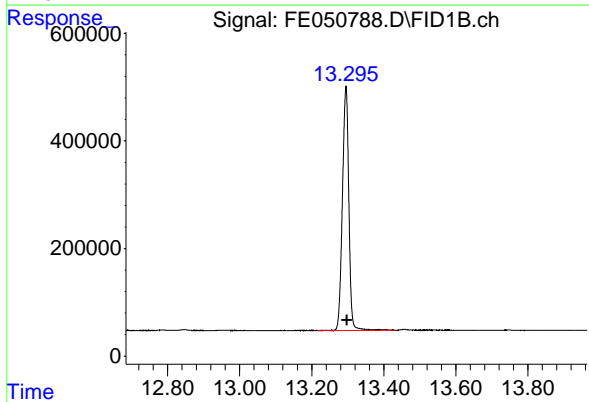




#9 ortho-Terphenyl (SURR)

R.T.: 11.861 min  
Delta R.T.: -0.003 min  
Response: 7045539  
Conc: 44.69 ug/ml

Instrument :  
FID\_E  
ClientSampleId :  
PB164337BL



#12 1-chlorooctadecane (SURR)

R.T.: 13.295 min  
Delta R.T.: -0.003 min  
Response: 5600847  
Conc: 47.35 ug/ml