

Data Path : Z:\pestpcbsrv\HPCHEM1\FID_E\Data\FE102522AL\
Data File : FE038311.D
Signal(s) : FID1B.ch
Acq On : 26 Oct 2022 01:24
Operator : YP\AJ
Sample : I.BLK
Misc :
ALS Vial : 1 Sample Multiplier: 1

Integration File: autoint1.e
Quant Time: Oct 26 04:51:36 2022
Quant Method : Z:\pestpcbsrv\HPCHEM1\FID_D\methods\Aliphatic EPH 102522.M
Quant Title : GC Extractables
QLast Update : Wed Oct 26 04:49:29 2022
Response via : Initial Calibration
Integrator: ChemStation

Volume Inj. : 1 ul
Signal Phase : Rxi-1ms
Signal Info : 20M x 0.18mm x 0.18um

Compound	R.T.	Response	Conc Units

System Monitoring Compounds			
Target Compounds			

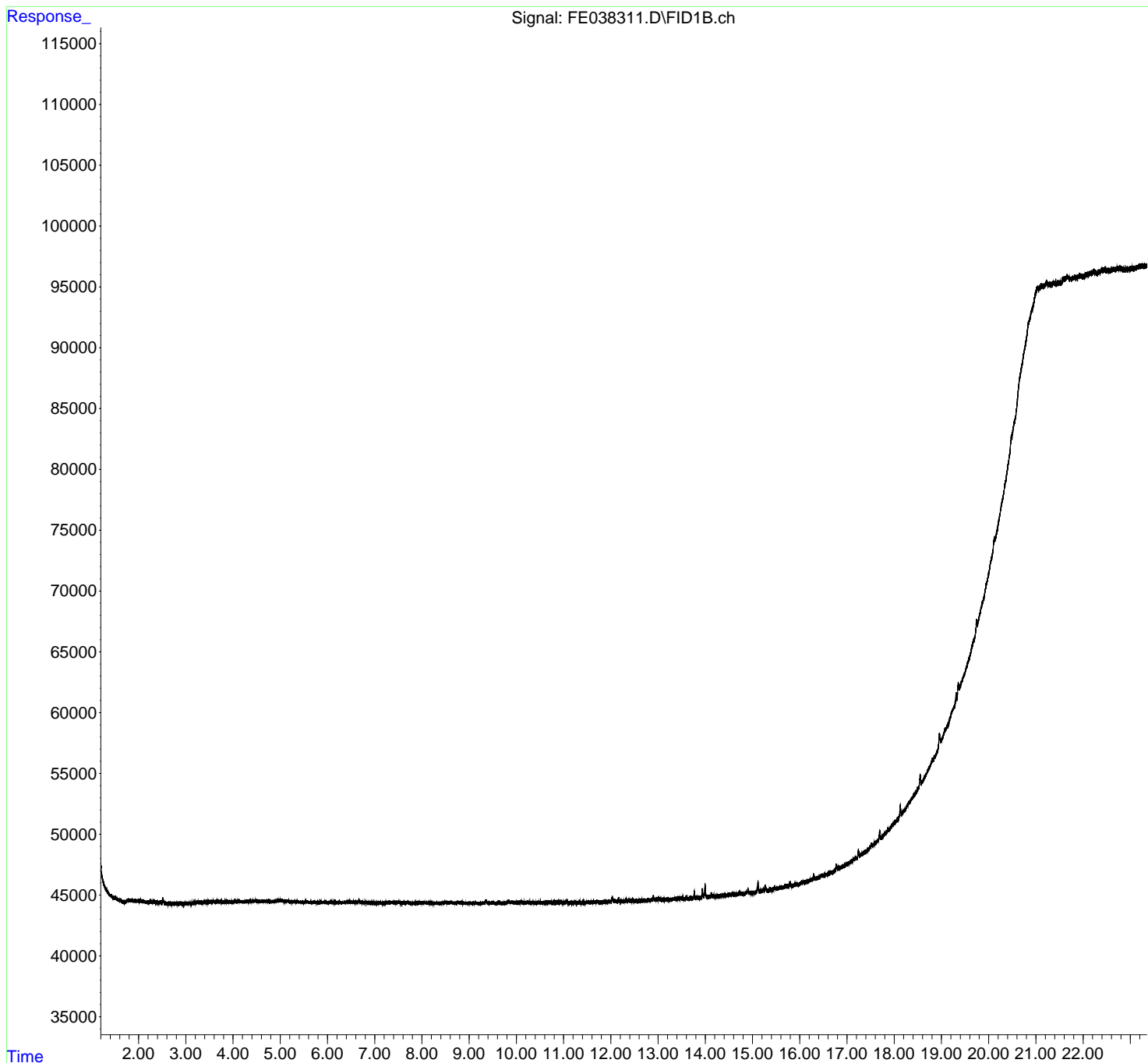
(f)=RT Delta > 1/2 Window

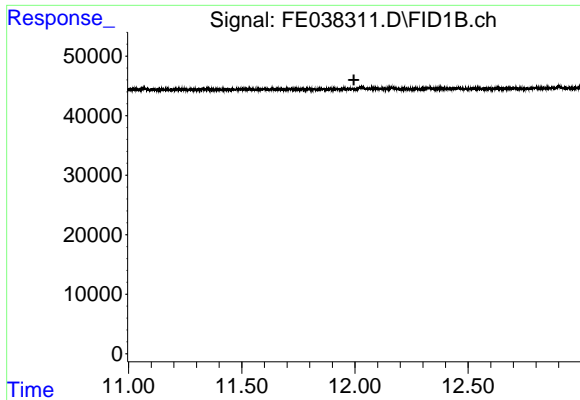
(m)=manual int.

Data Path : Z:\pestpcbsrv\HPCHEM1\FID_E\Data\FE102522AL\
Data File : FE038311.D
Signal(s) : FID1B.ch
Acq On : 26 Oct 2022 01:24
Operator : YP\AJ
Sample : I.BLK
Misc :
ALS Vial : 1 Sample Multiplier: 1

Integration File: autoint1.e
Quant Time: Oct 26 04:51:36 2022
Quant Method : Z:\pestpcbsrv\HPCHEM1\FID_D\methods\Aliphatic EPH 102522.M
Quant Title : GC Extractables
QLast Update : Wed Oct 26 04:49:29 2022
Response via : Initial Calibration
Integrator: ChemStation

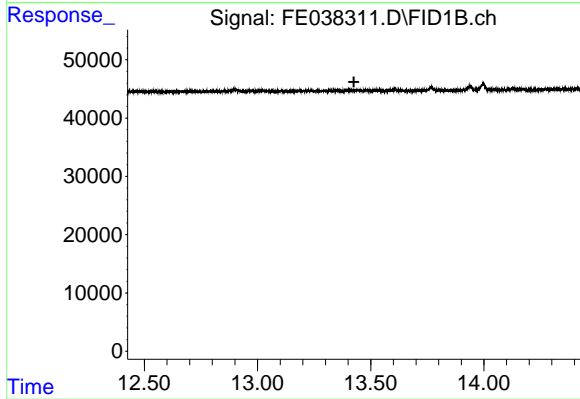
Volume Inj. : 1 ul
Signal Phase : Rxi-1ms
Signal Info : 20M x 0.18mm x 0.18um





#9 ortho-Terphenyl (SURR)

R.T.: 0.000 min
Exp R.T. : 11.996 min
Response: 0
Conc: N.D.



#12 1-chlorooctadecane (SURR)

R.T.: 0.000 min
Exp R.T. : 13.426 min
Response: 0
Conc: N.D.