

Data Path : Z:\pestpcbsrv\HPCHEM1\FID_E\Data\FE102523AL\
 Data File : FE045026.D
 Signal(s) : FID1B.ch
 Acq On : 25 Oct 2023 10:30
 Operator : YP\AJ
 Sample : 05011-01DL 5X
 Misc :
 ALS Vial : 17 Sample Multiplier: 1

Integration File: autoint1.e
 Quant Time: Oct 25 11:13:34 2023
 Quant Method : Z:\pestpcbsrv\HPCHEM1\FID_E\methods\Aliphatic EPH 101223.M
 Quant Title : GC Extractables
 QLast Update : Thu Oct 12 06:15:32 2023
 Response via : Initial Calibration
 Integrator: ChemStation

Volume Inj. : 1 ul
 Signal Phase : Rxi-1ms
 Signal Info : 20M x 0.18mm x 0.18um

Compound	R.T.	Response	Conc Units

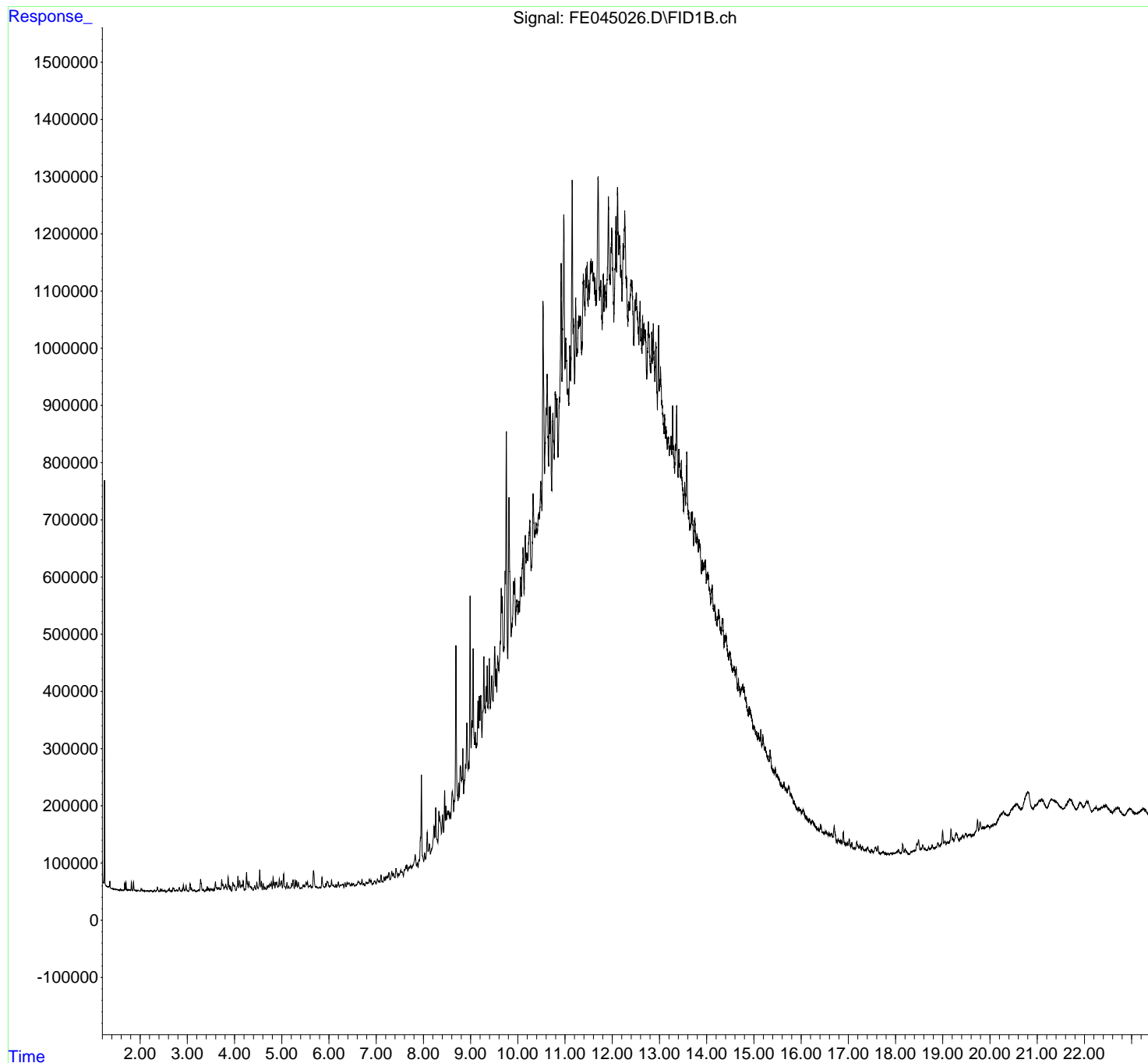
System Monitoring Compounds			
Target Compounds			

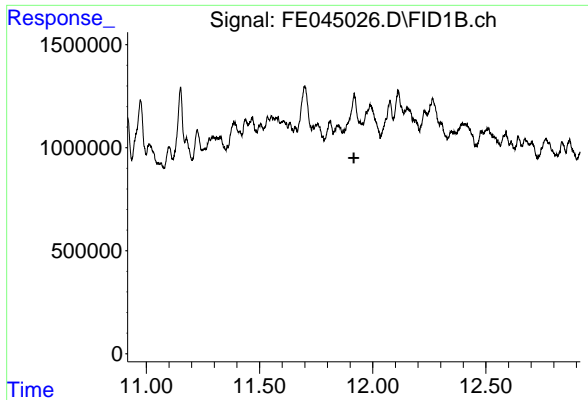
(f)=RT Delta > 1/2 Window (m)=manual int.

Data Path : Z:\pestpcbsrv\HPCHEM1\FID_E\Data\FE102523AL\
Data File : FE045026.D
Signal(s) : FID1B.ch
Acq On : 25 Oct 2023 10:30
Operator : YP\AJ
Sample : 05011-01DL 5X
Misc :
ALS Vial : 17 Sample Multiplier: 1

Integration File: autoint1.e
Quant Time: Oct 25 11:13:34 2023
Quant Method : Z:\pestpcbsrv\HPCHEM1\FID_E\methods\Aliphatic EPH 101223.M
Quant Title : GC Extractables
QLast Update : Thu Oct 12 06:15:32 2023
Response via : Initial Calibration
Integrator: ChemStation

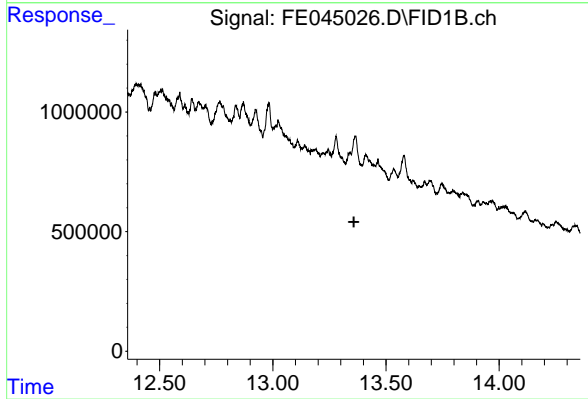
Volume Inj. : 1 ul
Signal Phase : Rxi-1ms
Signal Info : 20M x 0.18mm x 0.18um





#9 ortho-Terphenyl (SURR)

R.T.: 0.000 min
Exp R.T. : 11.917 min
Response: 0
Conc: N.D.



#12 1-chlorooctadecane (SURR)

R.T.: 0.000 min
Exp R.T. : 13.358 min
Response: 0
Conc: N.D.