

Data Path : Z:\pestpcbsrv\HPCHEM1\FID\_E\Data\FE102622AL\  
 Data File : FE038352.D  
 Signal(s) : FID1B.ch  
 Acq On : 27 Oct 2022 10:26  
 Operator : YP\AJ  
 Sample : N5238-01DL 2X  
 Misc :  
 ALS Vial : 13 Sample Multiplier: 1

Instrument :  
 FID\_E  
 ClientSampleId :  
 CHRT-20430DL

Integration File: sample.E  
 Quant Time: Oct 27 11:45:07 2022  
 Quant Method : Z:\pestpcbsrv\HPCHEM1\FID\_D\methods\Aliphatic EPH 102522.M  
 Quant Title : GC Extractables  
 QLast Update : Wed Oct 26 04:49:29 2022  
 Response via : Initial Calibration  
 Integrator: ChemStation

Volume Inj. : 1 ul  
 Signal Phase : Rxi-1ms  
 Signal Info : 20M x 0.18mm x 0.18um

Compound	R.T.	Response	Conc Units
-----			
System Monitoring Compounds			
9) S ortho-Terphenyl (SURR)	11.979	2951432	17.152 ug/ml
Spiked Amount	50.000	Recovery	= 34.30%
12) S 1-chlorooctadecane (S...	13.406	12362358	90.301 ug/ml
Spiked Amount	50.000	Recovery	= 180.60%

Target Compounds

-----

(f)=RT Delta > 1/2 Window

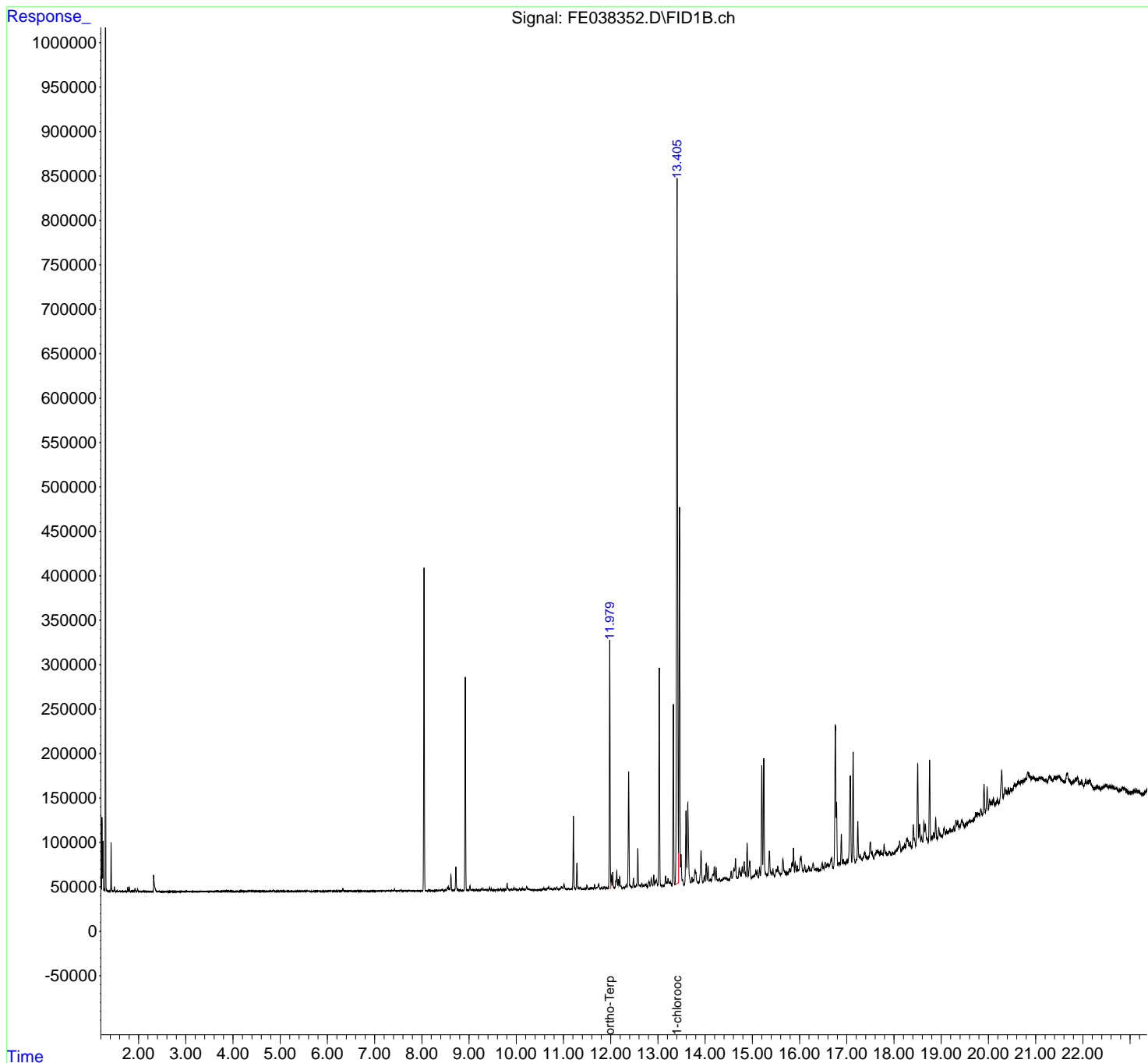
(m)=manual int.

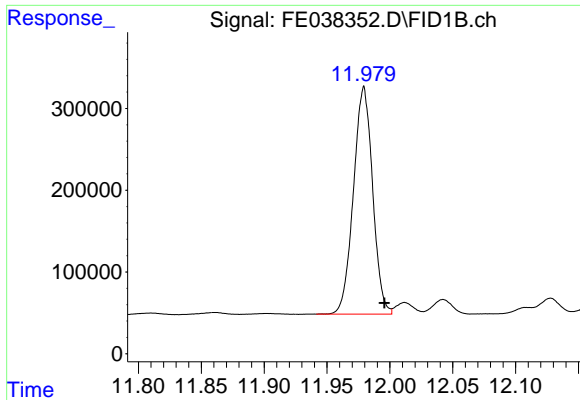
Data Path : Z:\pestpcbsrv\HPCHEM1\FID\_E\Data\FE102622AL\  
 Data File : FE038352.D  
 Signal(s) : FID1B.ch  
 Acq On : 27 Oct 2022 10:26  
 Operator : YP\AJ  
 Sample : N5238-01DL 2X  
 Misc :  
 ALS Vial : 13 Sample Multiplier: 1

Instrument :  
 FID\_E  
 ClientSampleId :  
 CHRT-20430DL

Integration File: sample.E  
 Quant Time: Oct 27 11:45:07 2022  
 Quant Method : Z:\pestpcbsrv\HPCHEM1\FID\_D\methods\Aliphatic EPH 102522.M  
 Quant Title : GC Extractables  
 QLast Update : Wed Oct 26 04:49:29 2022  
 Response via : Initial Calibration  
 Integrator: ChemStation

Volume Inj. : 1 ul  
 Signal Phase : Rxi-1ms  
 Signal Info : 20M x 0.18mm x 0.18um

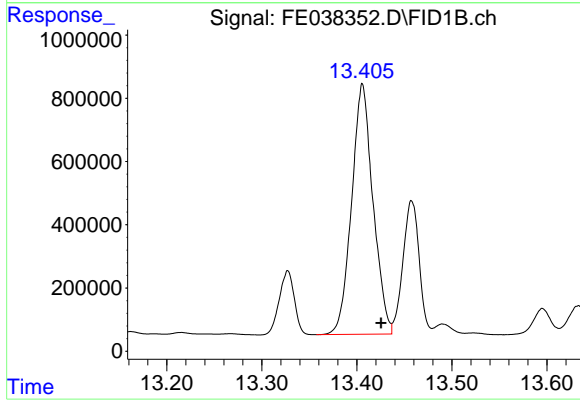




#9 ortho-Terphenyl (SURR)

R.T.: 11.979 min  
Delta R.T.: -0.016 min  
Response: 2951432  
Conc: 17.15 ug/ml

Instrument :  
FID\_E  
ClientSampleId :  
CHRT-20430DL



#12 1-chlorooctadecane (SURR)

R.T.: 13.406 min  
Delta R.T.: -0.020 min  
Response: 12362358  
Conc: 90.30 ug/ml