

Data Path : Z:\pestpcbsrv\HPCHEM1\FID\_E\Data\FE102720\  
 Data File : FE033055.D  
 Signal(s) : FID1B.CH  
 Acq On : 27 Oct 2020 10:34  
 Operator : DD\AJ  
 Sample : I.BLK  
 Misc :  
 ALS Vial : 2 Sample Multiplier: 1

Instrument :  
 FID\_E  
 ClientSampleId :  
 I.BLK

Integration File: autoint1.e  
 Quant Time: Oct 28 01:21:30 2020  
 Quant Method : Z:\pestpcbsrv\HPCHEM1\FID\_E\methods\FE101420.M  
 Quant Title :  
 QLast Update : Wed Oct 14 02:47:05 2020  
 Response via : Initial Calibration  
 Integrator: ChemStation 6890 Scale Mode: Large solvent peaks clipped

Volume Inj. : 1uL  
 Signal Phase : Rxi-1ms  
 Signal Info : 20mx0.18mmx0.18um

Compound	R.T.	Response	Conc Units
System Monitoring Compounds			
9) S TETRACOSANE-d50 (SURR...	14.643	5539325	17.886 ug/ml
Target Compounds			

(f)=RT Delta > 1/2 Window

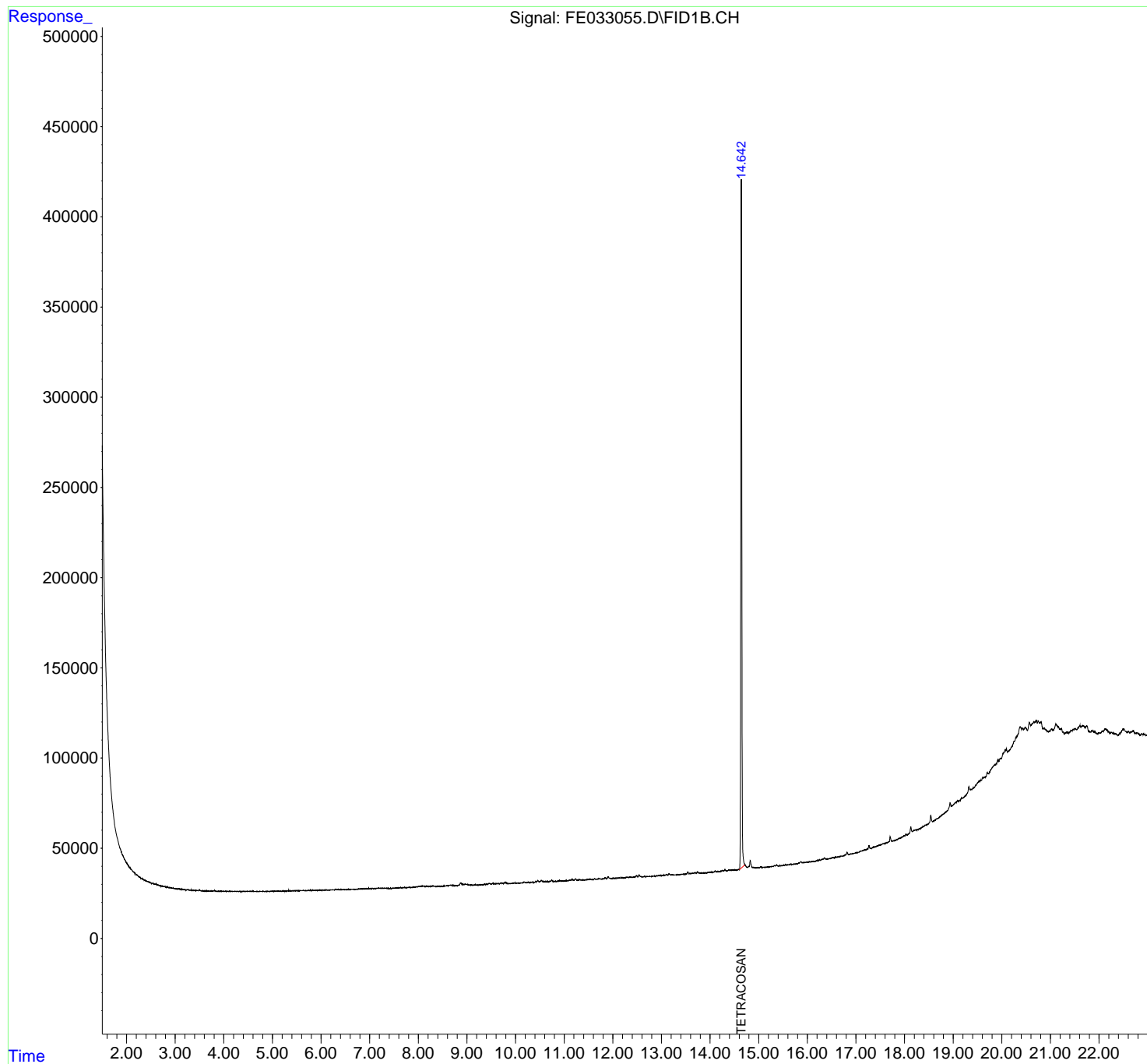
(m)=manual int.

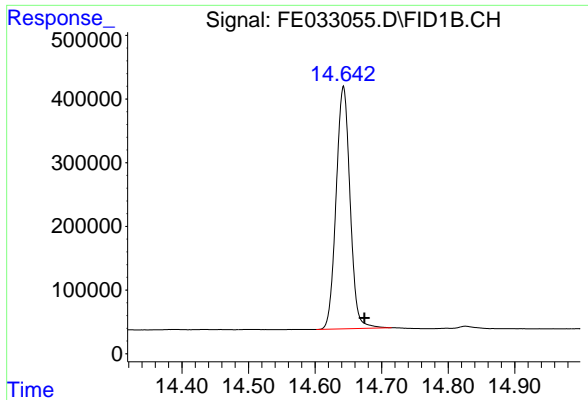
Data Path : Z:\pestpcbsrv\HPCHEM1\FID\_E\Data\FE102720\  
Data File : FE033055.D  
Signal(s) : FID1B.CH  
Acq On : 27 Oct 2020 10:34  
Operator : DD\AJ  
Sample : I.BLK  
Misc :  
ALS Vial : 2 Sample Multiplier: 1

Instrument :  
FID\_E  
ClientSampleId :  
I.BLK

Integration File: autoint1.e  
Quant Time: Oct 28 01:21:30 2020  
Quant Method : Z:\pestpcbsrv\HPCHEM1\FID\_E\methods\FE101420.M  
Quant Title :  
QLast Update : Wed Oct 14 02:47:05 2020  
Response via : Initial Calibration  
Integrator: ChemStation 6890 Scale Mode: Large solvent peaks clipped

Volume Inj. : 1uL  
Signal Phase : Rxi-1ms  
Signal Info : 20mx0.18mmx0.18um





#9 TETRACOSANE-d50 (SURROGATE)

R.T.: 14.643 min  
Delta R.T.: -0.032 min  
Response: 5539325  
Conc: 17.89 ug/ml

Instrument :  
FID\_E  
ClientSampleId :  
I.BLK