

Data Path : Z:\pestpcbsrv\HPCHEM1\FID\_E\Data\FE102822AL\  
 Data File : FE038398.D  
 Signal(s) : FID1B.ch  
 Acq On : 28 Oct 2022 18:43  
 Operator : YP\AJ  
 Sample : N5219-04  
 Misc :  
 ALS Vial : 25 Sample Multiplier: 1

Instrument :  
 FID\_E  
 ClientSampleId :  
 BACKYARD-BOTTOM-B

Integration File: autoint1.e  
 Quant Time: Oct 29 05:38:59 2022  
 Quant Method : Z:\pestpcbsrv\HPCHEM1\FID\_D\methods\Aliphatic EPH 102522.M  
 Quant Title : GC Extractables  
 QLast Update : Wed Oct 26 04:49:29 2022  
 Response via : Initial Calibration  
 Integrator: ChemStation

Volume Inj. : 1 ul  
 Signal Phase : Rxi-1ms  
 Signal Info : 20M x 0.18mm x 0.18um

Compound	R.T.	Response	Conc Units
-----			
System Monitoring Compounds			
12) S 1-chlorooctadecane (S... Spiked Amount 50.000	13.408	6029064 Recovery =	44.039 ug/ml 88.08%
Target Compounds			
4) T n-Dodecane (C12)	6.779	116810	0.748 ug/ml
6) T n-Tetradecane (C14)	8.605	72481	0.463 ug/ml
17) T n-Tricontane (C30)	18.109	47249	0.296 ug/ml
18) T n-Dotriacontane (C32)	18.942	67644	0.429 ug/ml
-----			

(f)=RT Delta > 1/2 Window

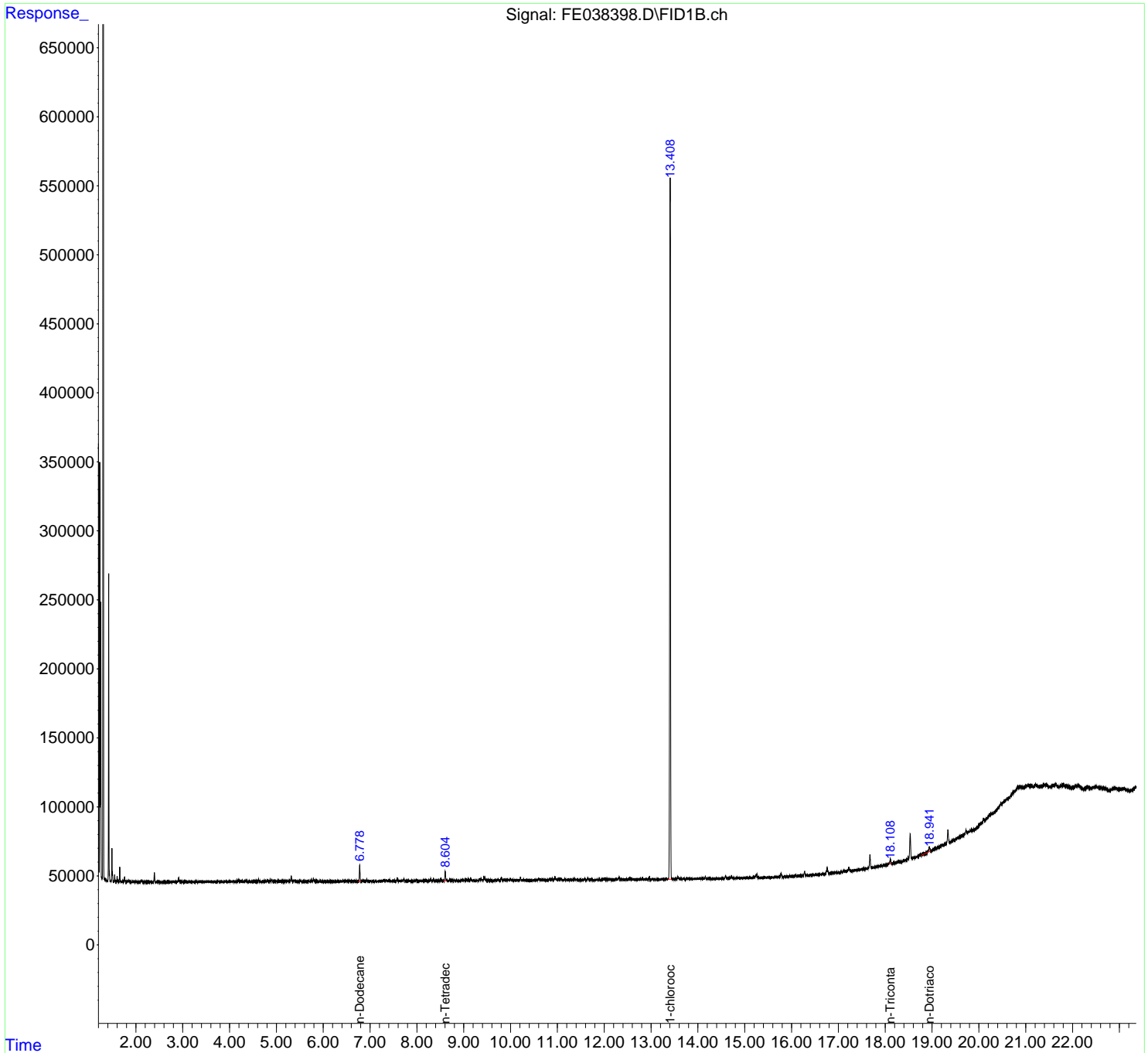
(m)=manual int.

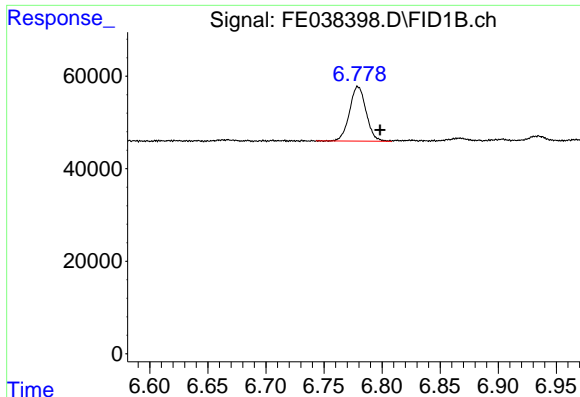
Data Path : Z:\pestpcbsrv\HPCHEM1\FID\_E\Data\FE102822AL\  
 Data File : FE038398.D  
 Signal(s) : FID1B.ch  
 Acq On : 28 Oct 2022 18:43  
 Operator : YP\AJ  
 Sample : N5219-04  
 Misc :  
 ALS Vial : 25 Sample Multiplier: 1

Instrument :  
 FID\_E  
 ClientSampleId :  
 BACKYARD-BOTTOM-B

Integration File: autoint1.e  
 Quant Time: Oct 29 05:38:59 2022  
 Quant Method : Z:\pestpcbsrv\HPCHEM1\FID\_D\methods\Aliphatic EPH 102522.M  
 Quant Title : GC Extractables  
 QLast Update : Wed Oct 26 04:49:29 2022  
 Response via : Initial Calibration  
 Integrator: ChemStation

Volume Inj. : 1 ul  
 Signal Phase : Rxi-1ms  
 Signal Info : 20M x 0.18mm x 0.18um

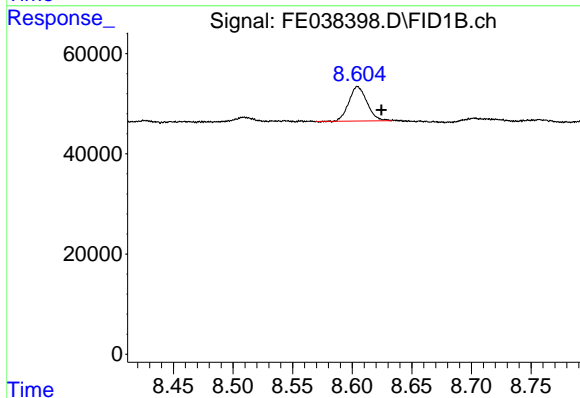




#4 n-Dodecane (C12)

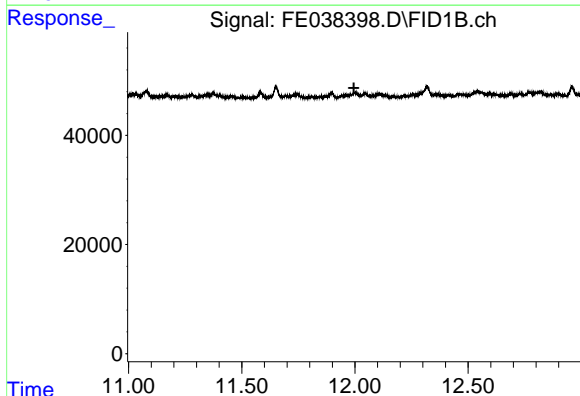
R.T.: 6.779 min  
 Delta R.T.: -0.019 min  
 Response: 116810  
 Conc: 0.75 ug/ml

Instrument :  
 FID\_E  
 ClientSampleId :  
 BACKYARD-BOTTOM-B



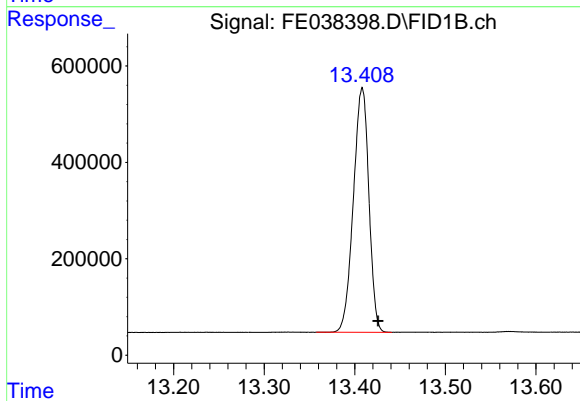
#6 n-Tetradecane (C14)

R.T.: 8.605 min  
 Delta R.T.: -0.020 min  
 Response: 72481  
 Conc: 0.46 ug/ml



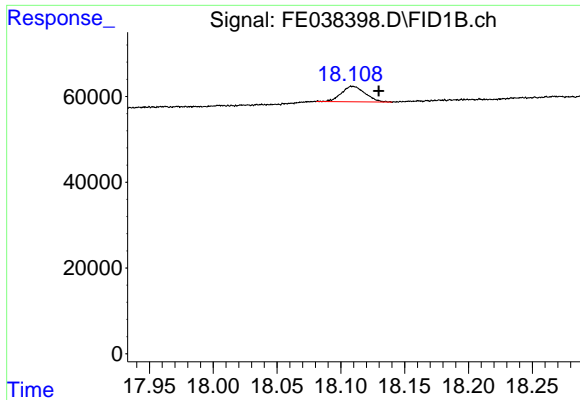
#9 ortho-Terphenyl (SURR)

R.T.: 0.000 min  
 Exp R.T. : 11.996 min  
 Response: 0  
 Conc: N.D.



#12 1-chlorooctadecane (SURR)

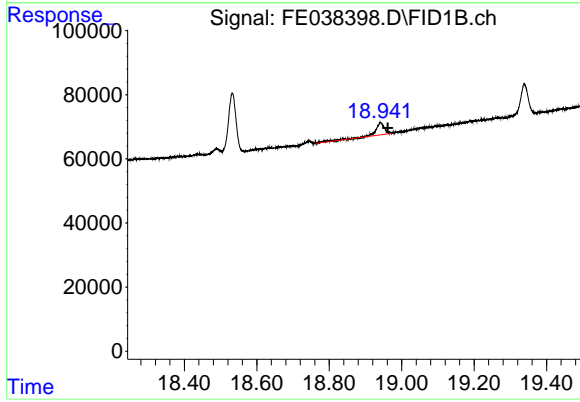
R.T.: 13.408 min  
 Delta R.T.: -0.017 min  
 Response: 6029064  
 Conc: 44.04 ug/ml



#17 n-Tricontane (C30)

R.T.: 18.109 min  
Delta R.T.: -0.020 min  
Response: 47249  
Conc: 0.30 ug/ml

Instrument :  
FID\_E  
ClientSampleId :  
BACKYARD-BOTTOM-B



#18 n-Dotriacontane (C32)

R.T.: 18.942 min  
Delta R.T.: -0.019 min  
Response: 67644  
Conc: 0.43 ug/ml