

Data Path : Z:\pestpcbsrv\HPCHEM1\FID_E\Data\FE103023AL\
 Data File : FE045093.D
 Signal(s) : FID1B.ch
 Acq On : 30 Oct 2023 13:15
 Operator : YP\AJ
 Sample : 05048-01DL2 100X
 Misc :
 ALS Vial : 18 Sample Multiplier: 1

Instrument :
 FID_E
 ClientSampleId :

Integration File: autoint1.e
 Quant Time: Oct 30 23:32:07 2023
 Quant Method : Z:\pestpcbsrv\HPCHEM1\FID_E\methods\Aliphatic EPH 101223.M
 Quant Title : GC Extractables
 QLast Update : Thu Oct 12 06:15:32 2023
 Response via : Initial Calibration
 Integrator: ChemStation

Volume Inj. : 1 ul
 Signal Phase : Rxi-1ms
 Signal Info : 20M x 0.18mm x 0.18um

Compound	R.T.	Response	Conc Units

System Monitoring Compounds			
9) S ortho-Terphenyl (SURR)	11.894	219812	1.097 ug/ml
Spiked Amount	50.000	Recovery =	2.19%
12) S 1-chlorooctadecane (S...	13.340	89240	0.603 ug/ml
Spiked Amount	50.000	Recovery =	1.21%
Target Compounds			
7) T n-Hexadecane (C16)	10.096f	194498	1.112 ug/ml
8) T n-Octadecane (C18)	11.671f	37060	0.212 ug/ml
18) T n-Dotriacontane (C32)	18.911	100379	0.669 ug/ml
20) T n-Hexatriacontane (C36)	20.471	381102	2.479 ug/ml
22) T n-Tetracontane (C40)	22.130	74071	0.443 ug/ml

(f)=RT Delta > 1/2 Window

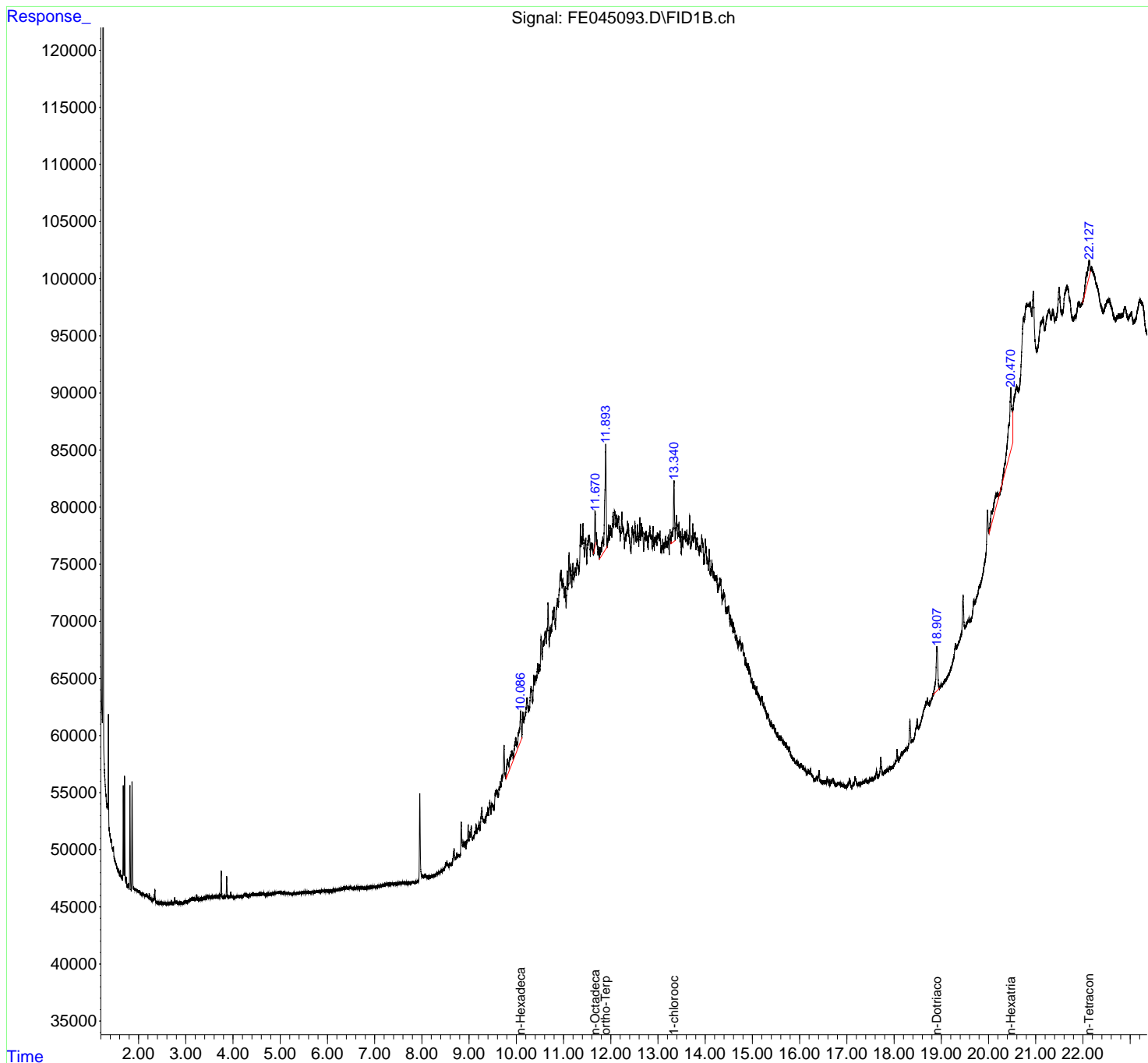
(m)=manual int.

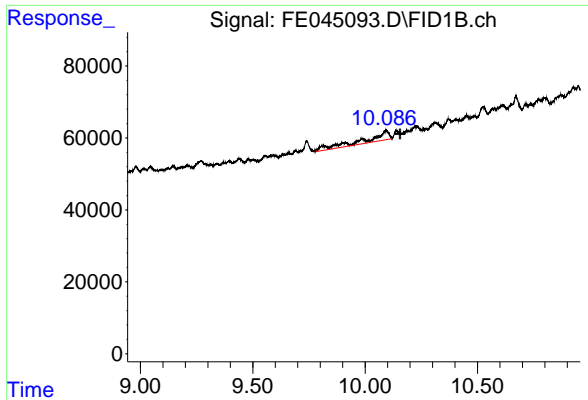
Data Path : Z:\pestpcbsrv\HPCHEM1\FID_E\Data\FE103023AL\
 Data File : FE045093.D
 Signal(s) : FID1B.ch
 Acq On : 30 Oct 2023 13:15
 Operator : YP\AJ
 Sample : 05048-01DL2 100X
 Misc :
 ALS Vial : 18 Sample Multiplier: 1

Instrument :
 FID_E
 ClientSampleId :

Integration File: autoint1.e
 Quant Time: Oct 30 23:32:07 2023
 Quant Method : Z:\pestpcbsrv\HPCHEM1\FID_E\methods\Aliphatic EPH 101223.M
 Quant Title : GC Extractables
 QLast Update : Thu Oct 12 06:15:32 2023
 Response via : Initial Calibration
 Integrator: ChemStation

Volume Inj. : 1 ul
 Signal Phase : Rxi-1ms
 Signal Info : 20M x 0.18mm x 0.18um

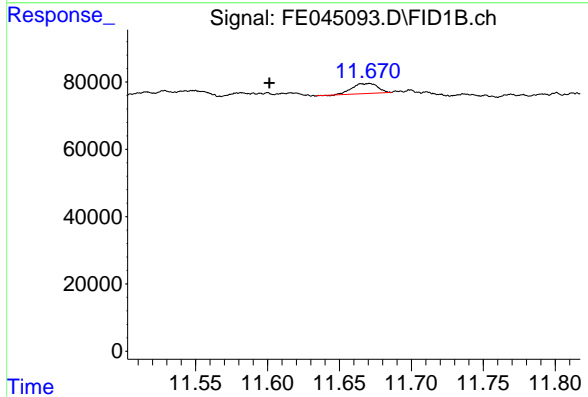




#7 n-Hexadecane (C16)

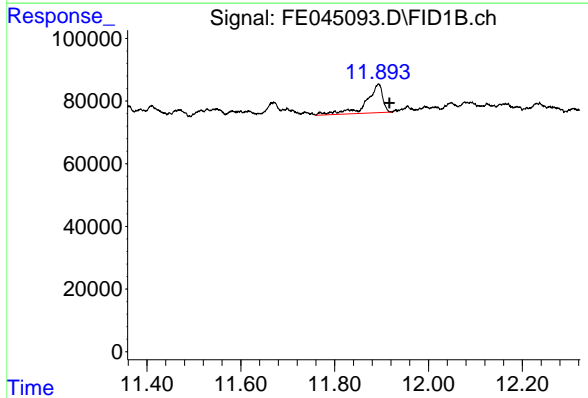
R.T.: 10.096 min
Delta R.T.: -0.060 min
Response: 194498
Conc: 1.11 ug/ml

Instrument :
FID_E
ClientSampleId :



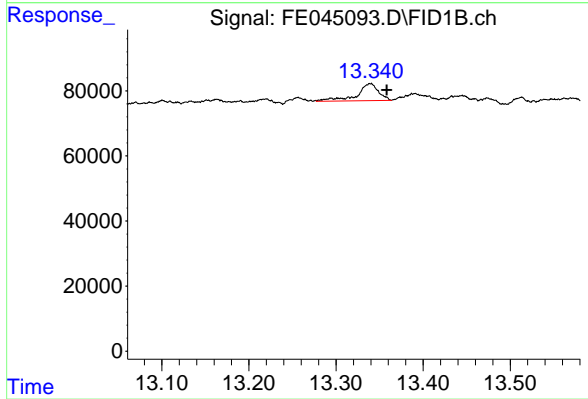
#8 n-Octadecane (C18)

R.T.: 11.671 min
Delta R.T.: 0.070 min
Response: 37060
Conc: 0.21 ug/ml



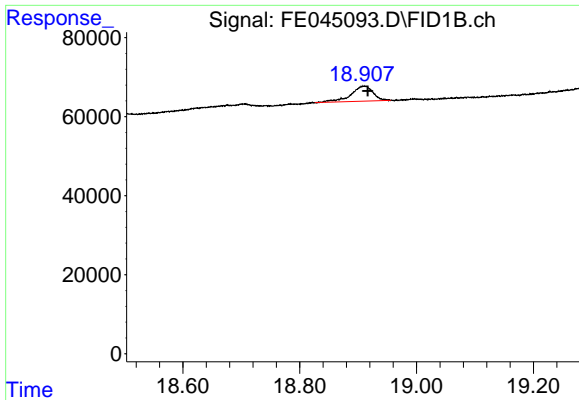
#9 ortho-Terphenyl (SURR)

R.T.: 11.894 min
Delta R.T.: -0.023 min
Response: 219812
Conc: 1.10 ug/ml



#12 1-chlorooctadecane (SURR)

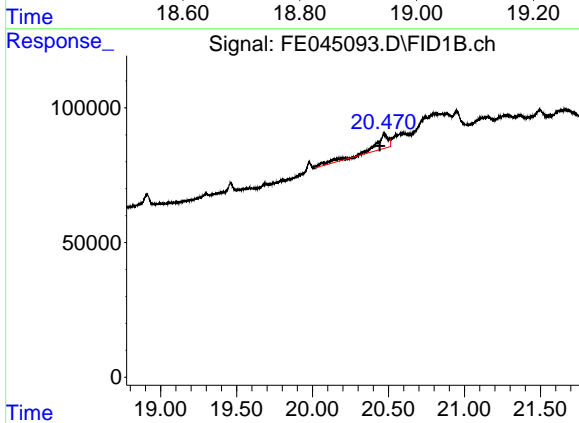
R.T.: 13.340 min
Delta R.T.: -0.019 min
Response: 89240
Conc: 0.60 ug/ml



#18 n-Dotriacontane (C32)

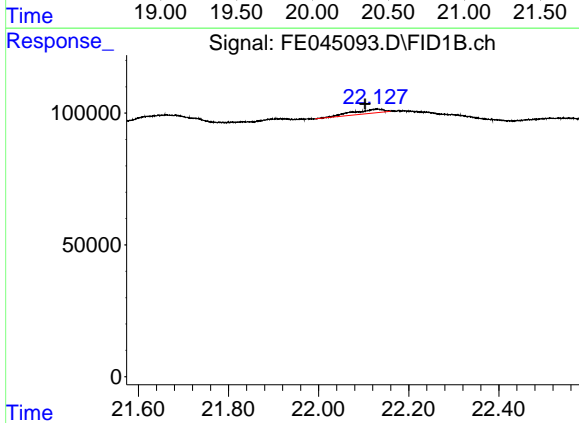
R.T.: 18.911 min
 Delta R.T.: -0.006 min
 Response: 100379
 Conc: 0.67 ug/ml

Instrument :
 FID_E
 ClientSampleId :



#20 n-Hexatriacontane (C36)

R.T.: 20.471 min
 Delta R.T.: 0.028 min
 Response: 381102
 Conc: 2.48 ug/ml



#22 n-Tetracontane (C40)

R.T.: 22.130 min
 Delta R.T.: 0.026 min
 Response: 74071
 Conc: 0.44 ug/ml