

Data Path : Z:\pestpcbsrv\HPCHEM1\FID_E\Data\FE110124AL\
 Data File : FE050980.D
 Signal(s) : FID1B.ch
 Acq On : 01 Nov 2024 23:36
 Operator : YP\AJ
 Sample : 20 PPM ALIPHATIC HC STD
 Misc :
 ALS Vial : 2 Sample Multiplier: 1

Instrument :
 FID_E
ClientSampleId :
 20 PPM ALIPHATIC HC STD

Manual Integrations
APPROVED

Reviewed By :Yogesh Patel 11/04/2024
 Supervised By :Ankita Jodhani 11/04/2024

Integration File: sample.E
 Quant Time: Nov 04 03:11:59 2024
 Quant Method : Z:\pestpcbsrv\HPCHEM1\FID_E\methods\Aliphatic EPH 100824.M
 Quant Title : GC Extractables
 QLast Update : Mon Oct 07 16:32:18 2024
 Response via : Initial Calibration
 Integrator: ChemStation

Volume Inj. : 1 ul
 Signal Phase : Rxi-1ms
 Signal Info : 20M x 0.18mm x 0.18um

Compound	R.T.	Response	Conc Units

System Monitoring Compounds			
9) S ortho-Terphenyl (SURR)	11.851	2919914	18.521 ug/mlm
Spiked Amount	50.000	Recovery =	37.04%
12) S 1-chlorooctadecane (S...	13.285	2234841	18.892 ug/ml
Spiked Amount	50.000	Recovery =	37.78%
Target Compounds			
1) T n-Nonane (C9)	3.241	2509623	17.762 ug/ml
2) T n-Decane (C10)	4.491	2612207	18.207 ug/ml
3) T A~Naphthalene (C11.7)	6.204	2510430	17.557 ug/ml
4) T n-Dodecane (C12)	6.659	2641840	18.355 ug/ml
5) T A~2-methylnaphthalene...	7.299	2437373	18.398 ug/mlm
6) T n-Tetradecane (C14)	8.485	2632468	18.400 ug/ml
7) T n-Hexadecane (C16)	10.090	2737963	18.604 ug/ml
8) T n-Octadecane (C18)	11.531	2791724	18.690 ug/ml
10) T n-Eicosane (C20)	12.839	2695060	18.794 ug/ml
11) T n-Heneicosane (C21)	13.450	2640487	18.802 ug/ml
13) T n-Docosane (C22)	14.034	2655686	18.929 ug/mlm
14) T n-Tetracosane (C24)	15.135	2679446	18.966 ug/mlm
15) T n-Hexacosane (C26)	16.155	2724199	19.359 ug/mlm
16) T n-Octacosane (C28)	17.105	2929816	20.022 ug/ml
17) T n-Tricontane (C30)	17.991	3383585	21.280 ug/ml
18) T n-Dotriacontane (C32)	18.822	3566139	21.998 ug/ml
19) T n-Tetratriacontane (C34)	19.605	3137668	21.360 ug/ml
20) T n-Hexatriacontane (C36)	20.344	2629499	20.735 ug/ml
21) T n-Octatriacontane (C38)	21.066	2240921	18.123 ug/ml
22) T n-Tetracontane (C40)	21.948	1870451	16.798 ug/ml

(f)=RT Delta > 1/2 Window

(m)=manual int.

Data Path : Z:\pestpcbsrv\HPCHEM1\FID_E\Data\FE110124AL\
 Data File : FE050980.D
 Signal(s) : FID1B.ch
 Acq On : 01 Nov 2024 23:36
 Operator : YP\AJ
 Sample : 20 PPM ALIPHATIC HC STD
 Misc :
 ALS Vial : 2 Sample Multiplier: 1

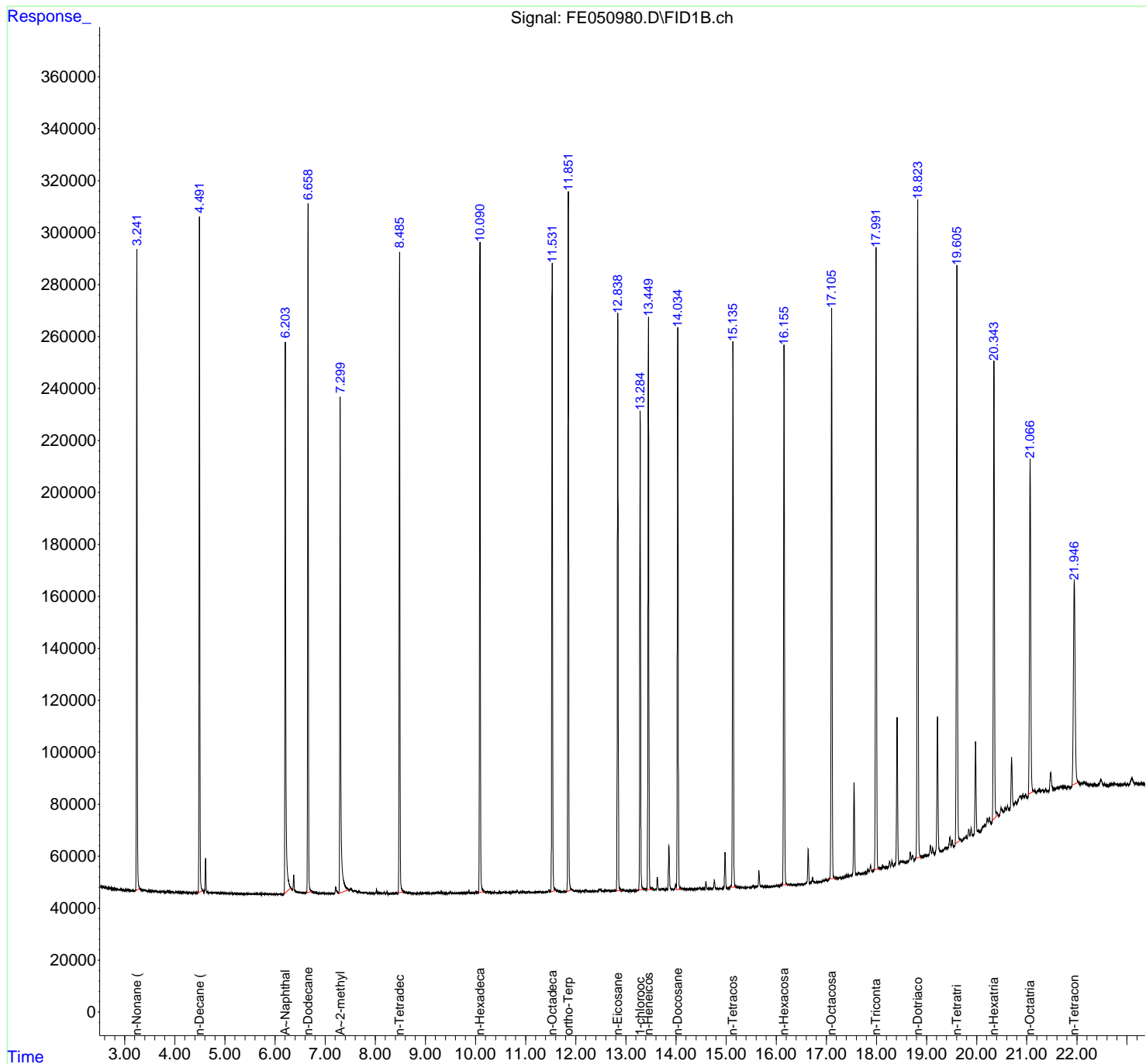
Instrument :
 FID_E
ClientSampleId :
 20 PPM ALIPHATIC HC STD

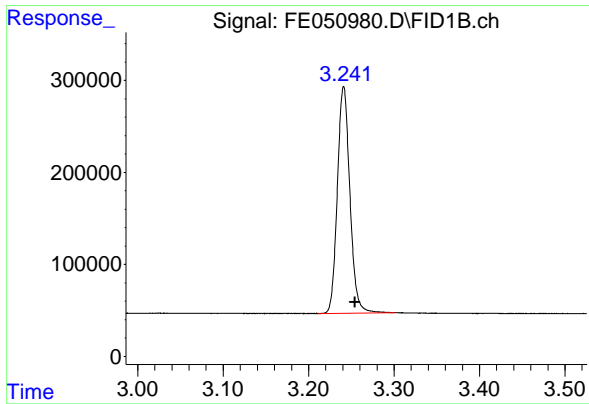
Manual Integrations
APPROVED

Reviewed By :Yogesh Patel 11/04/2024
 Supervised By :Ankita Jodhani 11/04/2024

Integration File: sample.E
 Quant Time: Nov 04 03:11:59 2024
 Quant Method : Z:\pestpcbsrv\HPCHEM1\FID_E\methods\Aliphatic EPH 100824.
 Quant Title : GC Extractables
 QLast Update : Mon Oct 07 16:32:18 2024
 Response via : Initial Calibration
 Integrator: ChemStation

Volume Inj. : 1 ul
 Signal Phase : Rxi-1ms
 Signal Info : 20M x 0.18mm x 0.18um





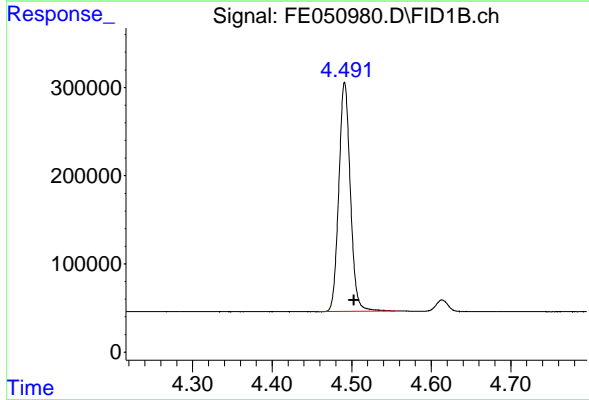
#1 n-Nonane (C9)

R.T.: 3.241 min
 Delta R.T.: -0.013 min
 Response: 2509623
 Conc: 17.76 ug/ml

Instrument : FID_E
 Client Sample Id : 20 PPM ALIPHATIC HC STD

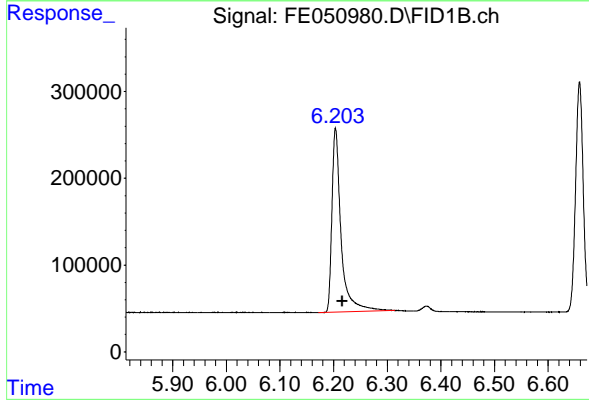
Manual Integrations
 APPROVED

Reviewed By :Yogesh Patel 11/04/2024
 Supervised By :Ankita Jodhani 11/04/2024



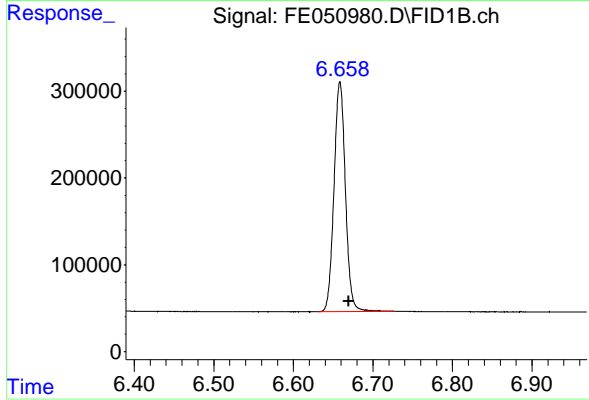
#2 n-Decane (C10)

R.T.: 4.491 min
 Delta R.T.: -0.012 min
 Response: 2612207
 Conc: 18.21 ug/ml



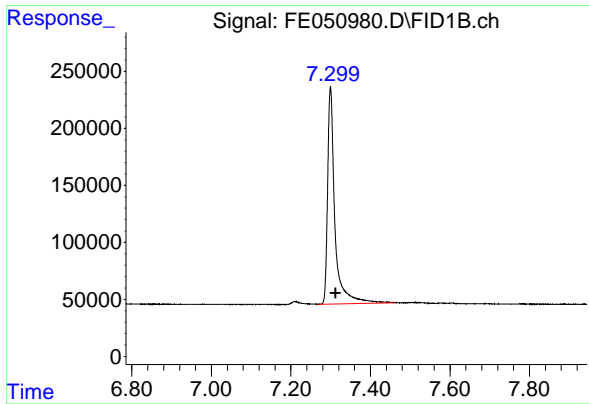
#3 A~Naphthalene (C11.7)

R.T.: 6.204 min
 Delta R.T.: -0.013 min
 Response: 2510430
 Conc: 17.56 ug/ml



#4 n-Dodecane (C12)

R.T.: 6.659 min
 Delta R.T.: -0.011 min
 Response: 2641840
 Conc: 18.35 ug/ml



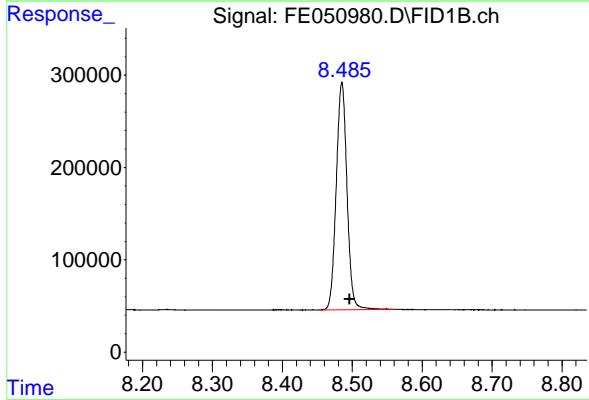
#5 A~2-methylnaphthalene (C12.89)

R.T.: 7.299 min
 Delta R.T.: -0.013 min
 Response: 2437373
 Conc: 18.40 ug/ml

Instrument : FID_E
 ClientSampleId : 20 PPM ALIPHATIC HC STD

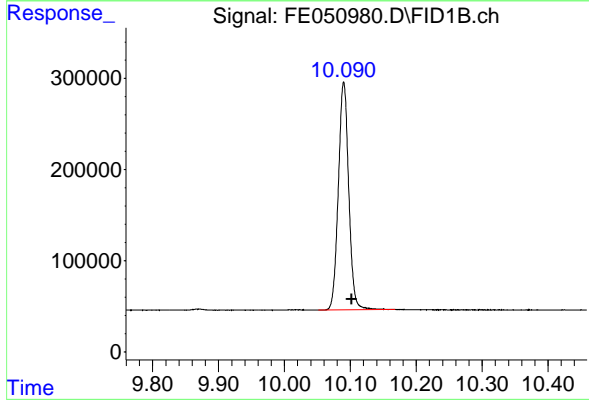
Manual Integrations
 APPROVED

Reviewed By :Yogesh Patel 11/04/2024
 Supervised By :Ankita Jodhani 11/04/2024



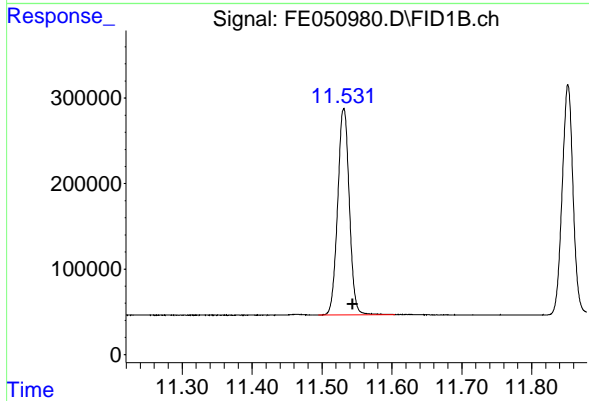
#6 n-Tetradecane (C14)

R.T.: 8.485 min
 Delta R.T.: -0.011 min
 Response: 2632468
 Conc: 18.40 ug/ml



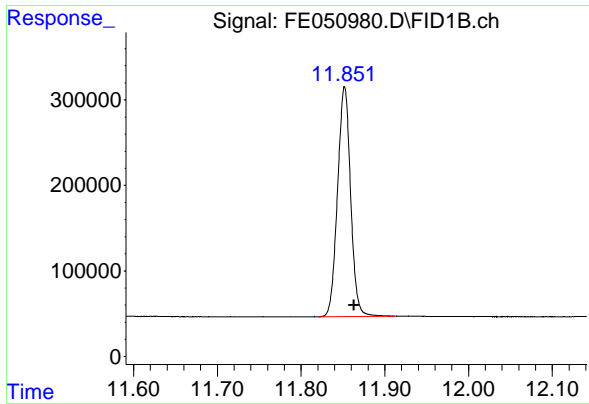
#7 n-Hexadecane (C16)

R.T.: 10.090 min
 Delta R.T.: -0.012 min
 Response: 2737963
 Conc: 18.60 ug/ml



#8 n-Octadecane (C18)

R.T.: 11.531 min
 Delta R.T.: -0.013 min
 Response: 2791724
 Conc: 18.69 ug/ml



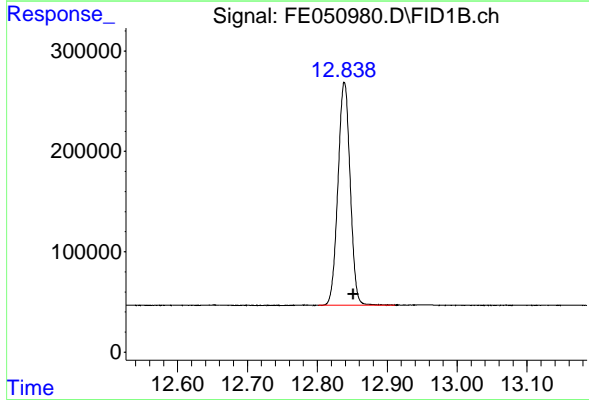
#9 ortho-Terphenyl (SURR)

R.T.: 11.851 min
 Delta R.T.: -0.012 min
 Response: 2919914
 Conc: 18.52 ug/ml

Instrument : FID_E
 Client Sample Id : 20 PPM ALIPHATIC HC STD

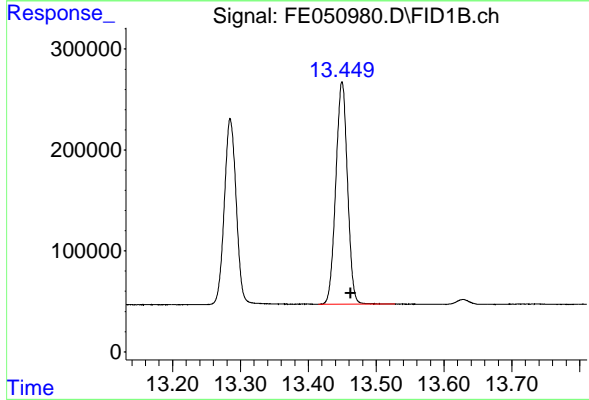
Manual Integrations
 APPROVED

Reviewed By :Yogesh Patel 11/04/2024
 Supervised By :Ankita Jodhani 11/04/2024



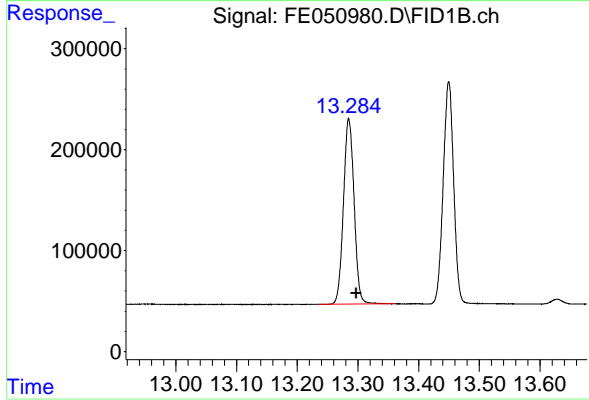
#10 n-Eicosane (C20)

R.T.: 12.839 min
 Delta R.T.: -0.013 min
 Response: 2695060
 Conc: 18.79 ug/ml



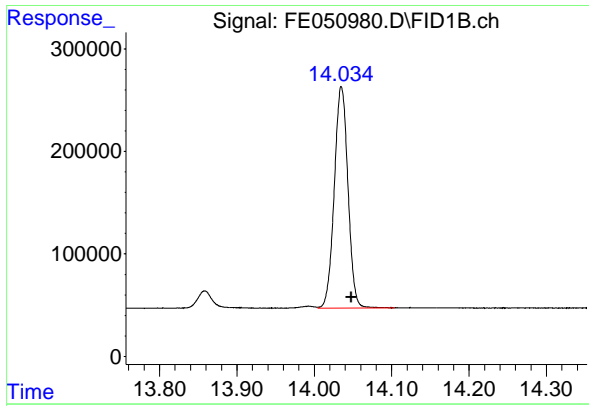
#11 n-Heneicosane (C21)

R.T.: 13.450 min
 Delta R.T.: -0.013 min
 Response: 2640487
 Conc: 18.80 ug/ml



#12 1-chlorooctadecane (SURR)

R.T.: 13.285 min
 Delta R.T.: -0.013 min
 Response: 2234841
 Conc: 18.89 ug/ml



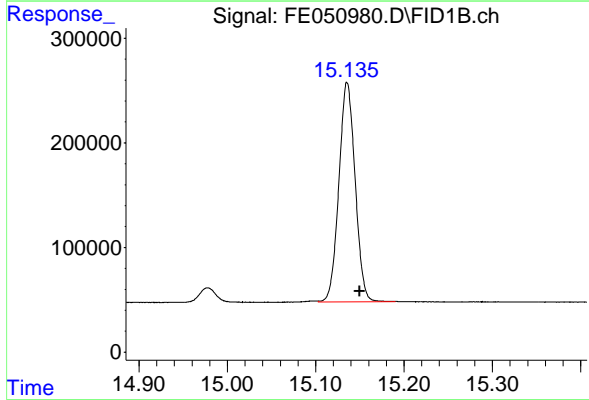
#13 n-Docosane (C22)

R.T.: 14.034 min
 Delta R.T.: -0.014 min
 Response: 2655686
 Conc: 18.93 ug/ml

Instrument : FID_E
 Client Sample Id : 20 PPM ALIPHATIC HC STD

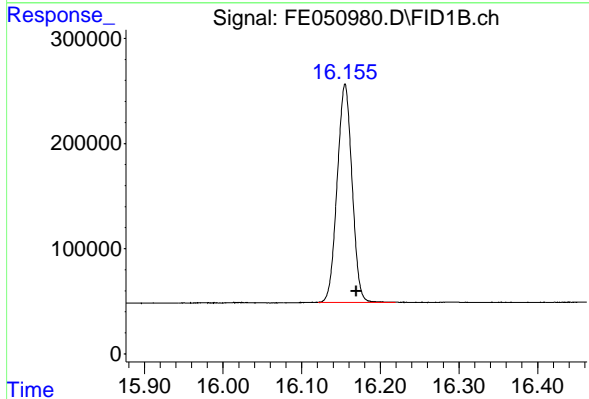
Manual Integrations
 APPROVED

Reviewed By :Yogesh Patel 11/04/2024
 Supervised By :Ankita Jodhani 11/04/2024



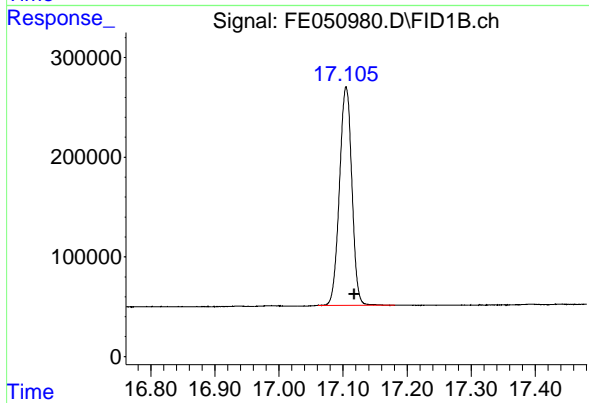
#14 n-Tetracosane (C24)

R.T.: 15.135 min
 Delta R.T.: -0.015 min
 Response: 2679446
 Conc: 18.97 ug/ml



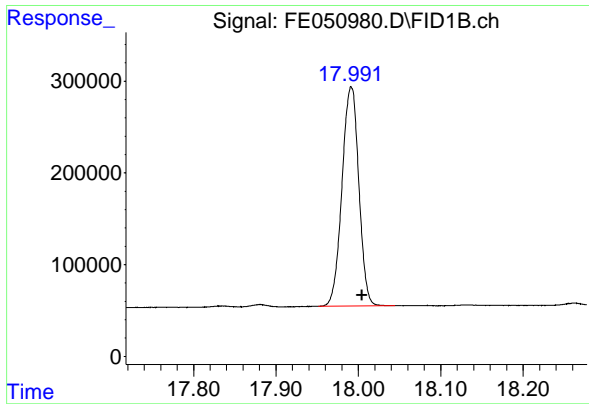
#15 n-Hexacosane (C26)

R.T.: 16.155 min
 Delta R.T.: -0.014 min
 Response: 2724199
 Conc: 19.36 ug/ml



#16 n-Octacosane (C28)

R.T.: 17.105 min
 Delta R.T.: -0.013 min
 Response: 2929816
 Conc: 20.02 ug/ml



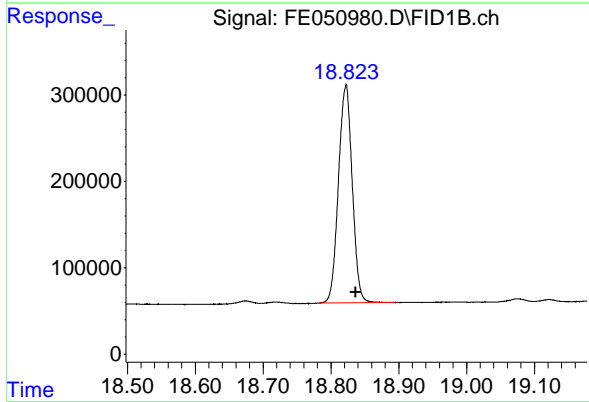
#17 n-Tricontane (C30)

R.T.: 17.991 min
 Delta R.T.: -0.013 min
 Response: 3383585
 Conc: 21.28 ug/ml

Instrument : FID_E
 ClientSampleId : 20 PPM ALIPHATIC HC STD

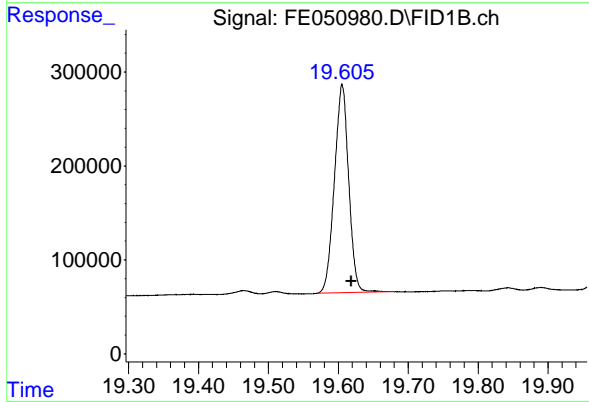
Manual Integrations
 APPROVED

Reviewed By :Yogesh Patel 11/04/2024
 Supervised By :Ankita Jodhani 11/04/2024



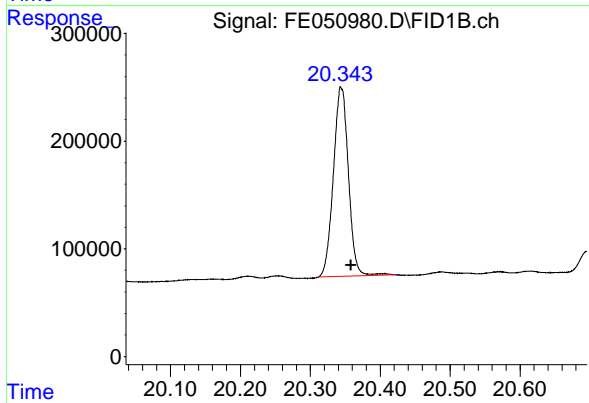
#18 n-Dotriacontane (C32)

R.T.: 18.822 min
 Delta R.T.: -0.015 min
 Response: 3566139
 Conc: 22.00 ug/ml



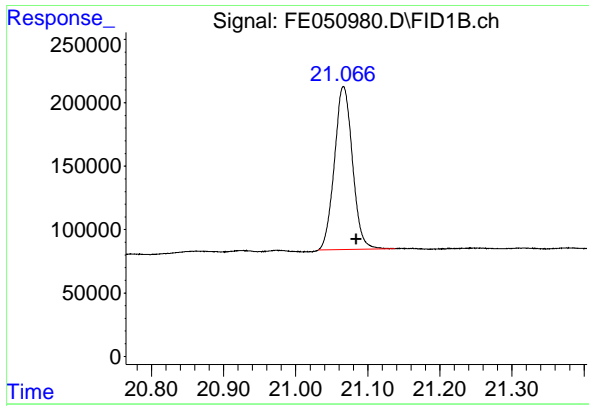
#19 n-Tetracontane (C34)

R.T.: 19.605 min
 Delta R.T.: -0.013 min
 Response: 3137668
 Conc: 21.36 ug/ml



#20 n-Hexatriacontane (C36)

R.T.: 20.344 min
 Delta R.T.: -0.014 min
 Response: 2629499
 Conc: 20.74 ug/ml



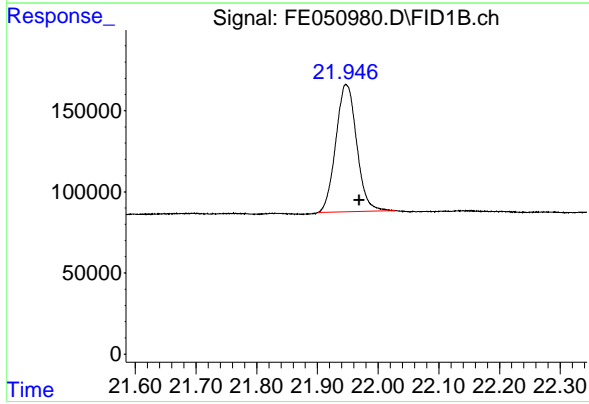
#21 n-Octatriacontane (C38)

R.T.: 21.066 min
 Delta R.T.: -0.018 min
 Response: 2240921
 Conc: 18.12 ug/ml

Instrument : FID_E
 ClientSampleId : 20 PPM ALIPHATIC HC STD

Manual Integrations
 APPROVED

Reviewed By :Yogesh Patel 11/04/2024
 Supervised By :Ankita Jodhani 11/04/2024



#22 n-Tetracontane (C40)

R.T.: 21.948 min
 Delta R.T.: -0.021 min
 Response: 1870451
 Conc: 16.80 ug/ml