

Data Path : Z:\pestpcbsrv\HPCHEM1\FID\_E\Data\FE110424AL\  
 Data File : FE051005.D  
 Signal(s) : FID1B.ch  
 Acq On : 04 Nov 2024 18:56  
 Operator : YP\AJ  
 Sample : P4667-14  
 Misc :  
 ALS Vial : 15 Sample Multiplier: 1

**Instrument :**  
 FID\_E  
**ClientSampleId :**  
 BP-F-7-EPH

**Manual Integrations**  
**APPROVED**  
 Reviewed By :Yogesh Patel 11/06/2024  
 Supervised By :Ankita Jodhani 11/06/2024

Integration File: sample.E  
 Quant Time: Nov 05 03:48:27 2024  
 Quant Method : Z:\pestpcbsrv\HPCHEM1\FID\_E\methods\Aliphatic EPH 100824.M  
 Quant Title : GC Extractables  
 QLast Update : Mon Oct 07 16:32:18 2024  
 Response via : Initial Calibration  
 Integrator: ChemStation

Volume Inj. : 1 ul  
 Signal Phase : Rxi-1ms  
 Signal Info : 20M x 0.18mm x 0.18um

Compound	R.T.	Response	Conc Units
-----			
System Monitoring Compounds			
9) S ortho-Terphenyl (SURR)	11.854	6608449	41.917 ug/mlm
Spiked Amount	50.000	Recovery =	83.83%
12) S 1-chlorooctadecane (S...	13.287	5345181	45.186 ug/ml
Spiked Amount	50.000	Recovery =	90.37%

Target Compounds

-----

(f)=RT Delta > 1/2 Window (m)=manual int.

Data Path : Z:\pestpcbsrv\HPCHEM1\FID\_E\Data\FE110424AL\  
 Data File : FE051005.D  
 Signal(s) : FID1B.ch  
 Acq On : 04 Nov 2024 18:56  
 Operator : YP\AJ  
 Sample : P4667-14  
 Misc :  
 ALS Vial : 15 Sample Multiplier: 1

**Instrument :**

FID\_E

**ClientSampleId :**

BP-F-7-EPH

**Manual Integrations**

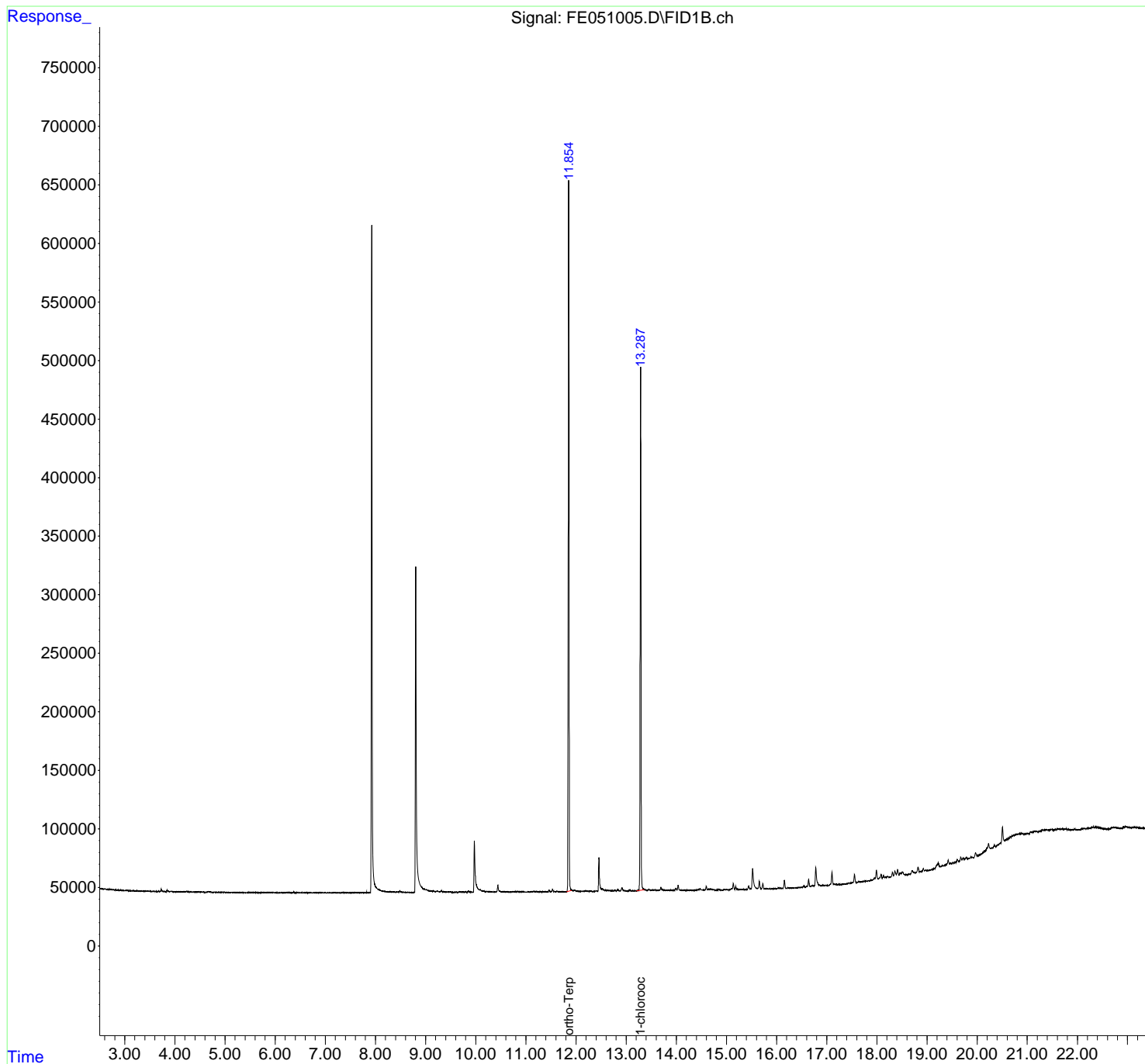
**APPROVED**

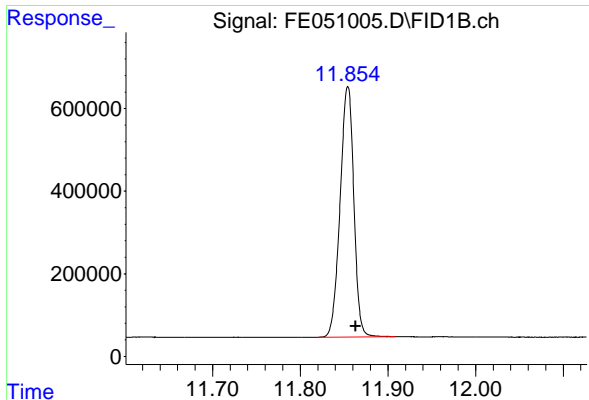
Reviewed By :Yogesh Patel 11/06/2024

Supervised By :Ankita Jodhani 11/06/2024

Integration File: sample.E  
 Quant Time: Nov 05 03:48:27 2024  
 Quant Method : Z:\pestpcbsrv\HPCHEM1\FID\_E\methods\Aliphatic EPH 100824.  
 Quant Title : GC Extractables  
 QLast Update : Mon Oct 07 16:32:18 2024  
 Response via : Initial Calibration  
 Integrator: ChemStation

Volume Inj. : 1 ul  
 Signal Phase : Rxi-1ms  
 Signal Info : 20M x 0.18mm x 0.18um





#9 ortho-Terphenyl (SURRE)

R.T.: 11.854 min  
Delta R.T.: -0.009 min  
Response: 6608449  
Conc: 41.92 ug/ml

Instrument :

FID\_E

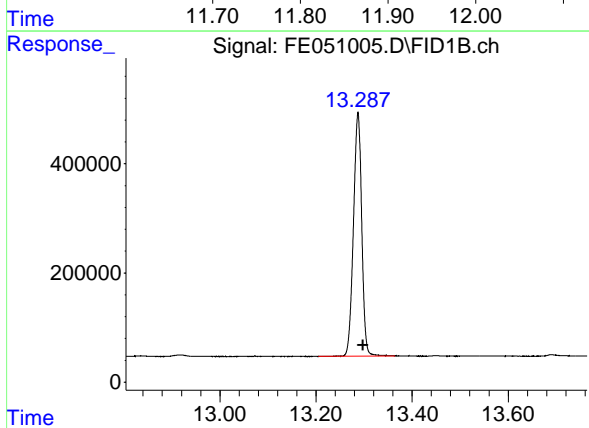
ClientSampleId :

BP-F-7-EPH

Manual Integrations

APPROVED

Reviewed By :Yogesh Patel 11/06/2024  
Supervised By :Ankita Jodhani 11/06/2024



#12 1-chlorooctadecane (SURRE)

R.T.: 13.287 min  
Delta R.T.: -0.010 min  
Response: 5345181  
Conc: 45.19 ug/ml