

Data Path : Z:\pestpcbsrv\HPCHEM1\FID_E\Data\FE110524AL\
 Data File : FE051048.D
 Signal(s) : FID1B.ch
 Acq On : 06 Nov 2024 02:28
 Operator : YP\AJ
 Sample : I.BLK
 Misc :
 ALS Vial : 1 Sample Multiplier: 1

Instrument :
 FID_E
 ClientSampleId :
 I.BLK

Integration File: autoint1.e
 Quant Time: Nov 06 04:30:56 2024
 Quant Method : Z:\pestpcbsrv\HPCHEM1\FID_E\methods\Aliphatic EPH 100824.M
 Quant Title : GC Extractables
 QLast Update : Mon Oct 07 16:32:18 2024
 Response via : Initial Calibration
 Integrator: ChemStation

Volume Inj. : 1 u1
 Signal Phase : Rxi-1ms
 Signal Info : 20M x 0.18mm x 0.18um

Compound	R.T.	Response	Conc Units
----------	------	----------	------------

 System Monitoring Compounds

Target Compounds

(f)=RT Delta > 1/2 Window

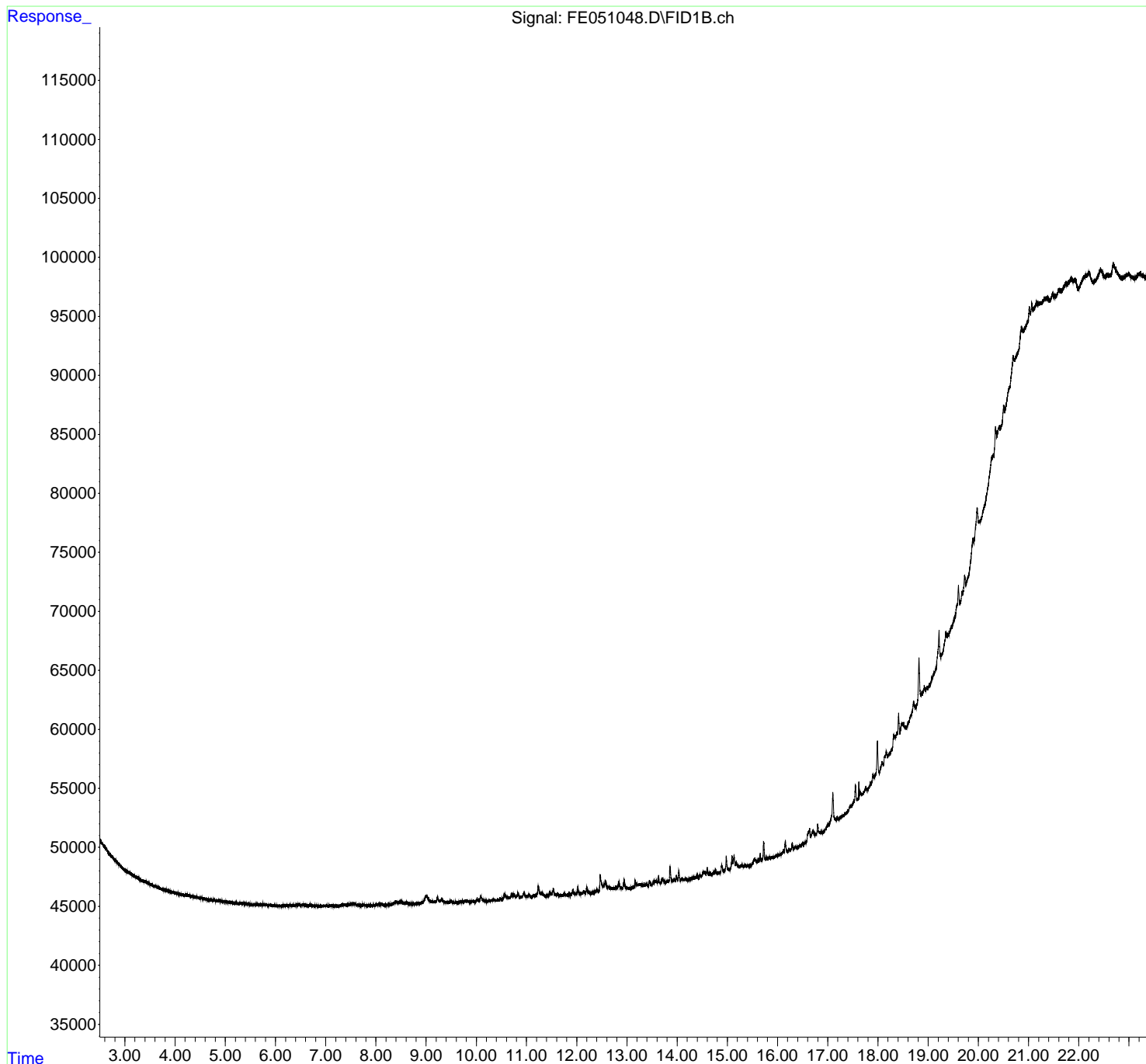
(m)=manual int.

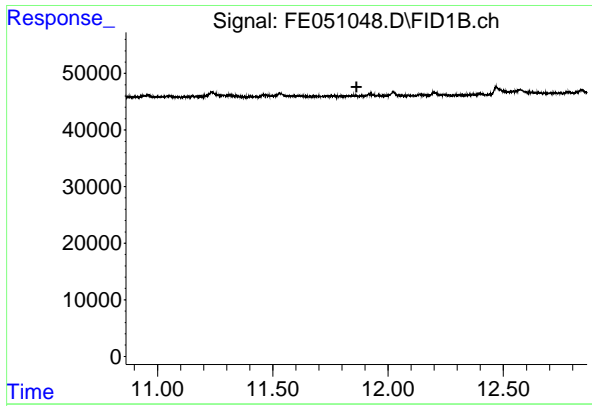
Data Path : Z:\pestpcbsrv\HPCHEM1\FID_E\Data\FE110524AL\
 Data File : FE051048.D
 Signal(s) : FID1B.ch
 Acq On : 06 Nov 2024 02:28
 Operator : YP\AJ
 Sample : I.BLK
 Misc :
 ALS Vial : 1 Sample Multiplier: 1

Instrument :
 FID_E
 ClientSampleId :
 I.BLK

Integration File: autoint1.e
 Quant Time: Nov 06 04:30:56 2024
 Quant Method : Z:\pestpcbsrv\HPCHEM1\FID_E\methods\Aliphatic EPH 100824.M
 Quant Title : GC Extractables
 QLast Update : Mon Oct 07 16:32:18 2024
 Response via : Initial Calibration
 Integrator: ChemStation

Volume Inj. : 1 ul
 Signal Phase : Rxi-1ms
 Signal Info : 20M x 0.18mm x 0.18um

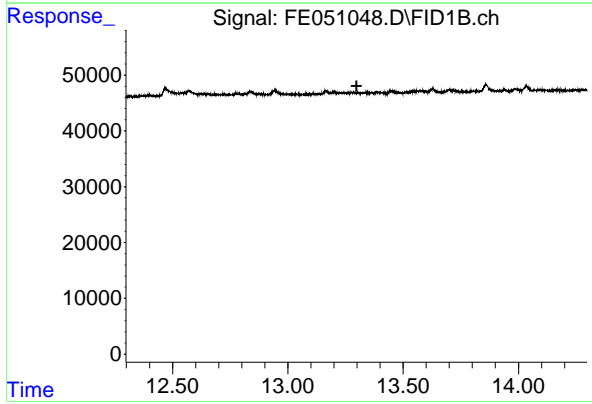




#9 ortho-Terphenyl (SURRE)

R.T.: 0.000 min
Exp R.T. : 11.863 min
Response: 0
Conc: N.D.

Instrument :
FID_E
ClientSampleId :
I.BLK



#12 1-chlorooctadecane (SURRE)

R.T.: 0.000 min
Exp R.T. : 13.298 min
Response: 0
Conc: N.D.