

Data Path : Z:\pestpcbsrv\HPCHEM1\FID_E\Data\FE110524AL\
 Data File : FE051056.D
 Signal(s) : FID1B.ch
 Acq On : 06 Nov 2024 06:29
 Operator : YP\AJ
 Sample : 20 PPM ALIPHATIC HC STD
 Misc :
 ALS Vial : 2 Sample Multiplier: 1

Instrument :
 FID_E
ClientSampleId :
 20 PPM ALIPHATIC HC STD

Manual Integrations
APPROVED

Reviewed By :Yogesh Patel 11/06/2024
 Supervised By :Ankita Jodhani 11/06/2024

Integration File: autoint1.e
 Quant Time: Nov 06 06:53:28 2024
 Quant Method : Z:\pestpcbsrv\HPCHEM1\FID_E\methods\Aliphatic EPH 100824.M
 Quant Title : GC Extractables
 QLast Update : Mon Oct 07 16:32:18 2024
 Response via : Initial Calibration
 Integrator: ChemStation

Volume Inj. : 1 ul
 Signal Phase : Rxi-1ms
 Signal Info : 20M x 0.18mm x 0.18um

Compound	R.T.	Response	Conc Units

System Monitoring Compounds			
9) S ortho-Terphenyl (SURR)	11.851	3304373	20.959 ug/mlm
Spiked Amount	50.000	Recovery =	41.92%
12) S 1-chlorooctadecane (S...	13.285	2522436	21.324 ug/ml
Spiked Amount	50.000	Recovery =	42.65%
Target Compounds			
1) T n-Nonane (C9)	3.240	3179125	22.501 ug/ml
2) T n-Decane (C10)	4.491	3227121	22.492 ug/ml
3) T A~Naphthalene (C11.7)	6.203	3103422	21.704 ug/ml
4) T n-Dodecane (C12)	6.659	3235818	22.481 ug/ml
5) T A~2-methylnaphthalene...	7.299	2890179	21.816 ug/ml
6) T n-Tetradecane (C14)	8.485	3150304	22.020 ug/ml
7) T n-Hexadecane (C16)	10.090	3187100	21.656 ug/ml
8) T n-Octadecane (C18)	11.531	3175080	21.257 ug/ml
10) T n-Eicosane (C20)	12.838	3021621	21.071 ug/ml
11) T n-Heneicosane (C21)	13.450	2954197	21.036 ug/ml
13) T n-Docosane (C22)	14.036	2939443	20.952 ug/ml
14) T n-Tetracosane (C24)	15.136	2939076	20.804 ug/mlm
15) T n-Hexacosane (C26)	16.155	2943246	20.916 ug/mlm
16) T n-Octacosane (C28)	17.104	2945122	20.127 ug/ml
17) T n-Tricontane (C30)	17.990	3054371	19.210 ug/ml
18) T n-Dotriacontane (C32)	18.821	3101517	19.132 ug/ml
19) T n-Tetratriacontane (C34)	19.605	2833027	19.287 ug/ml
20) T n-Hexatriacontane (C36)	20.344	2653370	20.923 ug/ml
21) T n-Octatriacontane (C38)	21.068	2320394	18.766 ug/ml
22) T n-Tetracontane (C40)	21.950	1942634	17.446 ug/ml

(f)=RT Delta > 1/2 Window

(m)=manual int.

Data Path : Z:\pestpcbsrv\HPCHEM1\FID_E\Data\FE110524AL\
 Data File : FE051056.D
 Signal(s) : FID1B.ch
 Acq On : 06 Nov 2024 06:29
 Operator : YP\AJ
 Sample : 20 PPM ALIPHATIC HC STD
 Misc :
 ALS Vial : 2 Sample Multiplier: 1

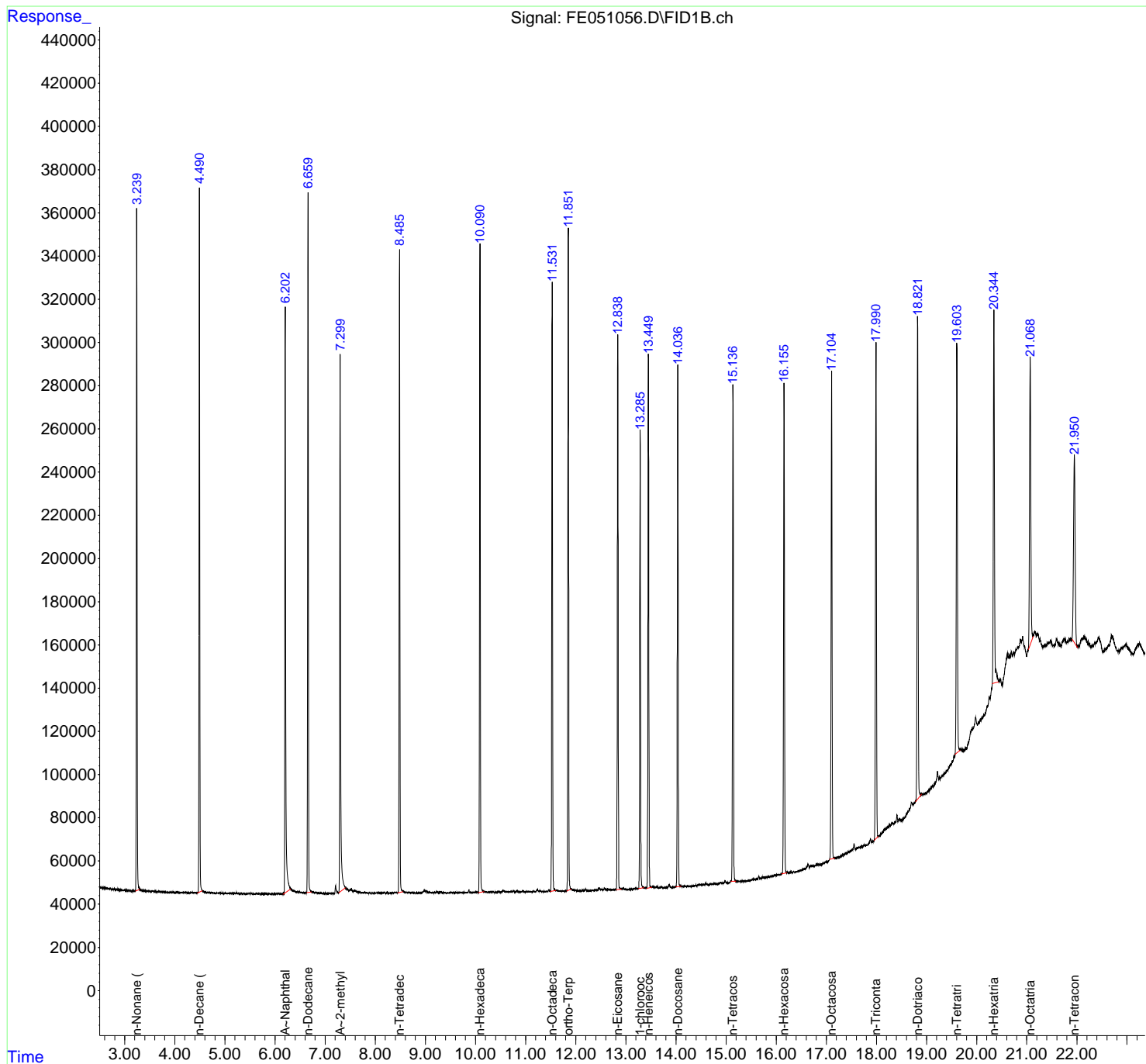
Instrument :
 FID_E
ClientSampleId :
 20 PPM ALIPHATIC HC STD

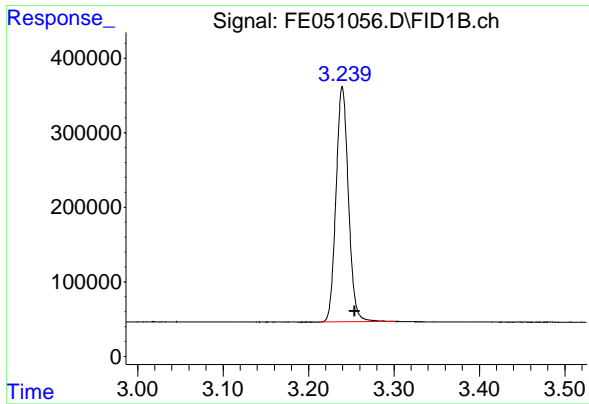
Manual Integrations
APPROVED

Reviewed By :Yogesh Patel 11/06/2024
 Supervised By :Ankita Jodhani 11/06/2024

Integration File: autoint1.e
 Quant Time: Nov 06 06:53:28 2024
 Quant Method : Z:\pestpcbsrv\HPCHEM1\FID_E\methods\Aliphatic EPH 100824.
 Quant Title : GC Extractables
 QLast Update : Mon Oct 07 16:32:18 2024
 Response via : Initial Calibration
 Integrator: ChemStation

Volume Inj. : 1 ul
 Signal Phase : Rxi-1ms
 Signal Info : 20M x 0.18mm x 0.18um





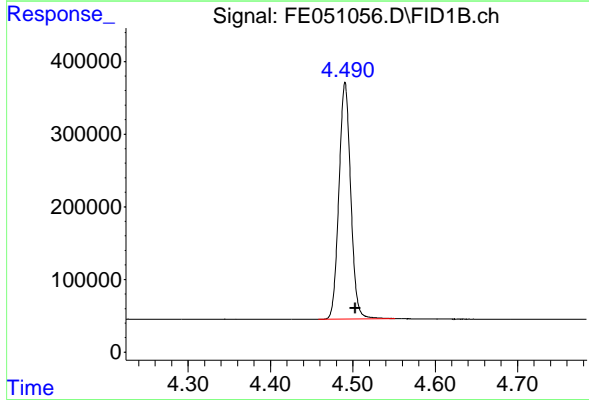
#1 n-Nonane (C9)

R.T.: 3.240 min
 Delta R.T.: -0.014 min
 Response: 3179125
 Conc: 22.50 ug/ml

Instrument : FID_E
 Client Sample Id : 20 PPM ALIPHATIC HC STD

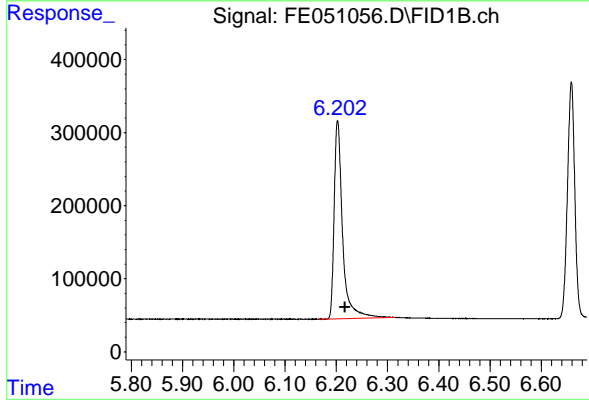
Manual Integrations
 APPROVED

Reviewed By :Yogesh Patel 11/06/2024
 Supervised By :Ankita Jodhani 11/06/2024



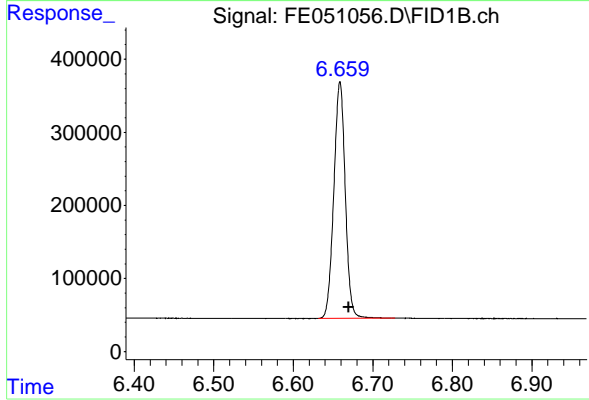
#2 n-Decane (C10)

R.T.: 4.491 min
 Delta R.T.: -0.012 min
 Response: 3227121
 Conc: 22.49 ug/ml



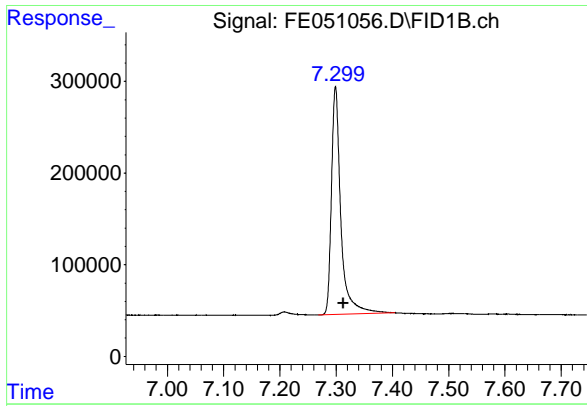
#3 A~Naphthalene (C11.7)

R.T.: 6.203 min
 Delta R.T.: -0.014 min
 Response: 3103422
 Conc: 21.70 ug/ml



#4 n-Dodecane (C12)

R.T.: 6.659 min
 Delta R.T.: -0.011 min
 Response: 3235818
 Conc: 22.48 ug/ml



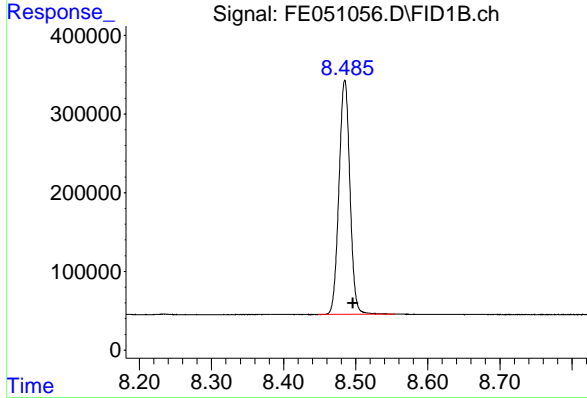
#5 A~2-methylnaphthalene (C12.89)

R.T.: 7.299 min
 Delta R.T.: -0.014 min
 Response: 2890179
 Conc: 21.82 ug/ml

Instrument : FID_E
 Client Sample Id : 20 PPM ALIPHATIC HC STD

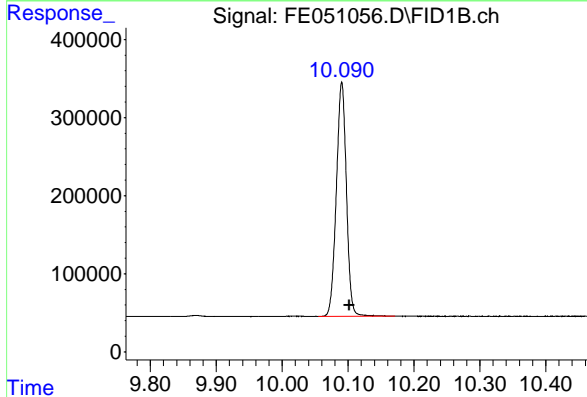
Manual Integrations
 APPROVED

Reviewed By :Yogesh Patel 11/06/2024
 Supervised By :Ankita Jodhani 11/06/2024



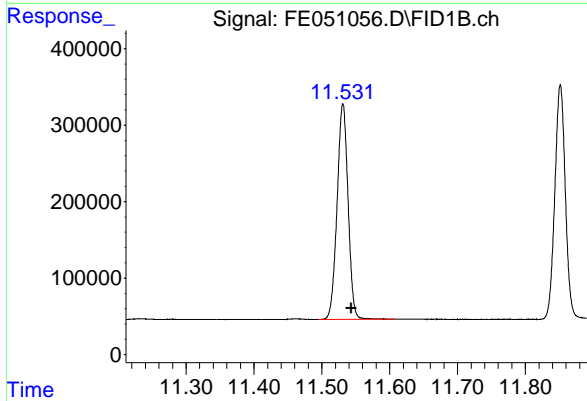
#6 n-Tetradecane (C14)

R.T.: 8.485 min
 Delta R.T.: -0.012 min
 Response: 3150304
 Conc: 22.02 ug/ml



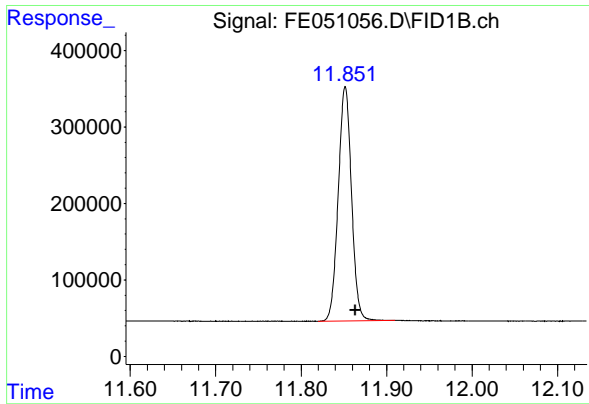
#7 n-Hexadecane (C16)

R.T.: 10.090 min
 Delta R.T.: -0.012 min
 Response: 3187100
 Conc: 21.66 ug/ml



#8 n-Octadecane (C18)

R.T.: 11.531 min
 Delta R.T.: -0.013 min
 Response: 3175080
 Conc: 21.26 ug/ml



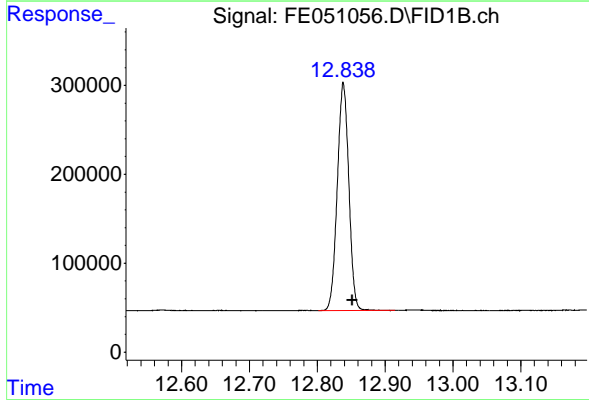
#9 ortho-Terphenyl (SURR)

R.T.: 11.851 min
 Delta R.T.: -0.012 min
 Response: 3304373
 Conc: 20.96 ug/ml

Instrument : FID_E
 ClientSampleId : 20 PPM ALIPHATIC HC STD

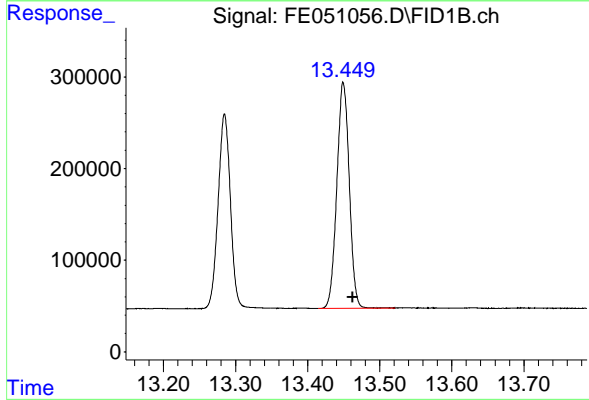
Manual Integrations
 APPROVED

Reviewed By :Yogesh Patel 11/06/2024
 Supervised By :Ankita Jodhani 11/06/2024



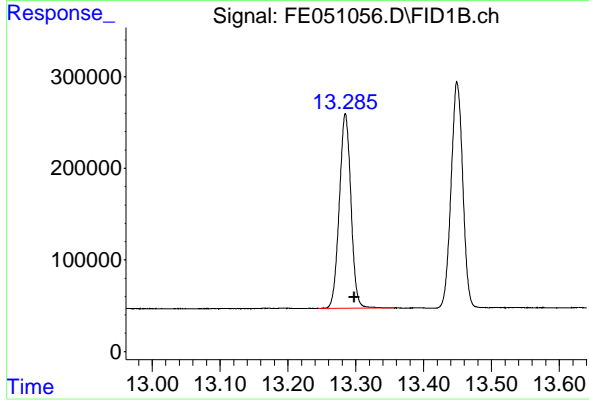
#10 n-Eicosane (C20)

R.T.: 12.838 min
 Delta R.T.: -0.013 min
 Response: 3021621
 Conc: 21.07 ug/ml



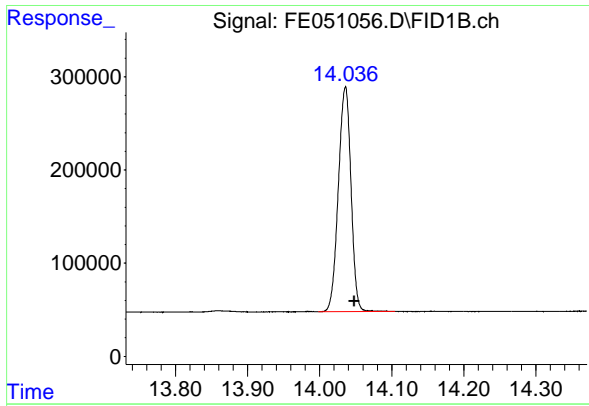
#11 n-Heneicosane (C21)

R.T.: 13.450 min
 Delta R.T.: -0.013 min
 Response: 2954197
 Conc: 21.04 ug/ml



#12 1-chlorooctadecane (SURR)

R.T.: 13.285 min
 Delta R.T.: -0.013 min
 Response: 2522436
 Conc: 21.32 ug/ml



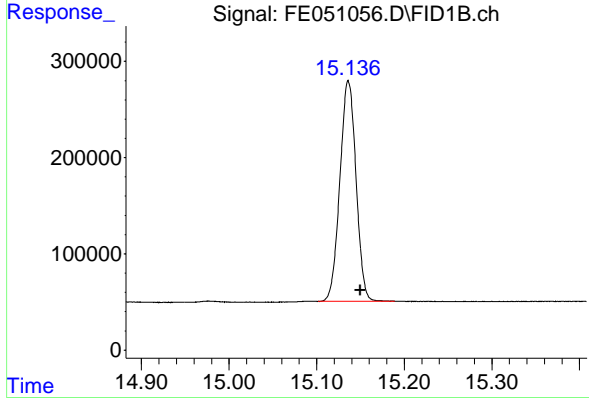
#13 n-Docosane (C22)

R.T.: 14.036 min
 Delta R.T.: -0.012 min
 Response: 2939443
 Conc: 20.95 ug/ml

Instrument : FID_E
 ClientSampleId : 20 PPM ALIPHATIC HC STD

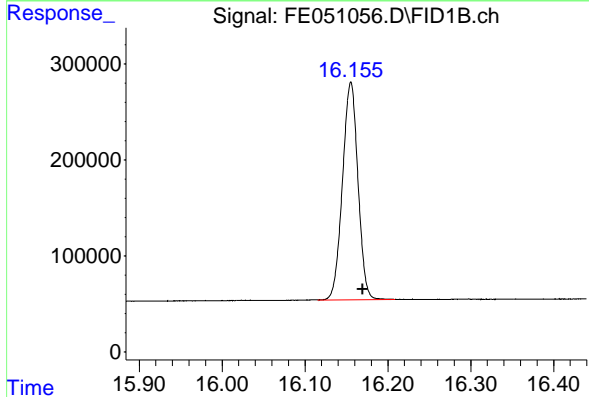
Manual Integrations
 APPROVED

Reviewed By :Yogesh Patel 11/06/2024
 Supervised By :Ankita Jodhani 11/06/2024



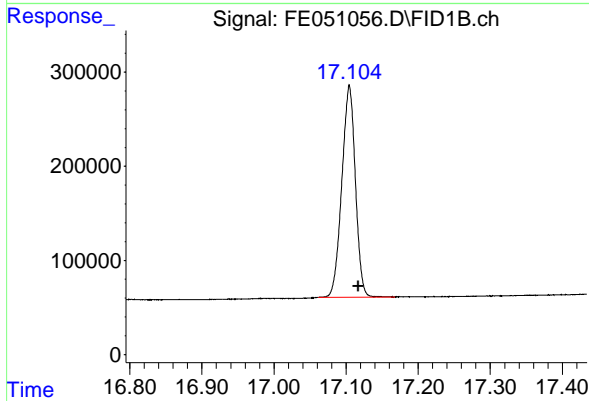
#14 n-Tetracosane (C24)

R.T.: 15.136 min
 Delta R.T.: -0.014 min
 Response: 2939076
 Conc: 20.80 ug/ml m



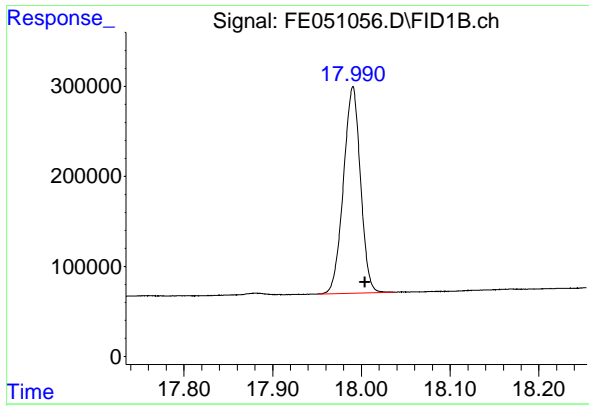
#15 n-Hexacosane (C26)

R.T.: 16.155 min
 Delta R.T.: -0.014 min
 Response: 2943246
 Conc: 20.92 ug/ml m



#16 n-Octacosane (C28)

R.T.: 17.104 min
 Delta R.T.: -0.013 min
 Response: 2945122
 Conc: 20.13 ug/ml



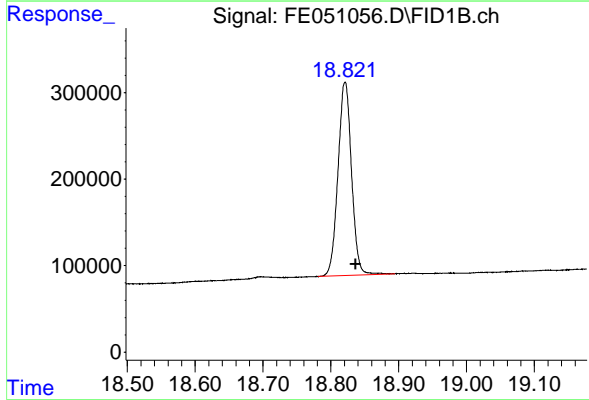
#17 n-Tricontane (C30)

R.T.: 17.990 min
Delta R.T.: -0.014 min
Response: 3054371
Conc: 19.21 ug/ml

Instrument : FID_E
ClientSampleId : 20 PPM ALIPHATIC HC STD

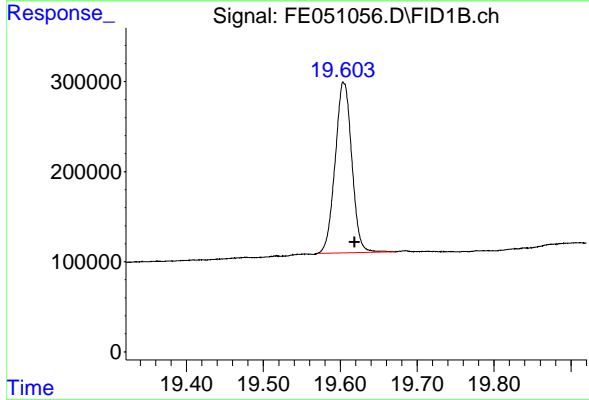
Manual Integrations
APPROVED

Reviewed By :Yogesh Patel 11/06/2024
Supervised By :Ankita Jodhani 11/06/2024



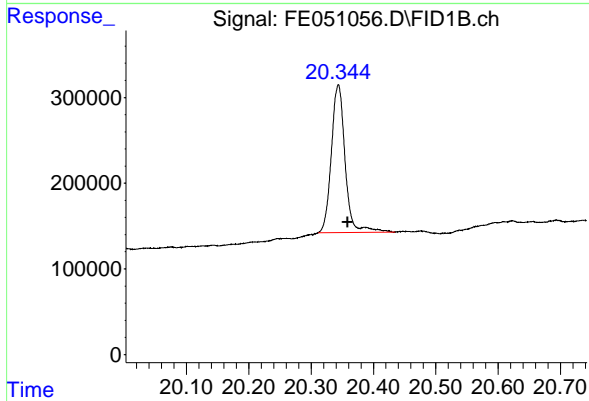
#18 n-Dotriacontane (C32)

R.T.: 18.821 min
Delta R.T.: -0.015 min
Response: 3101517
Conc: 19.13 ug/ml



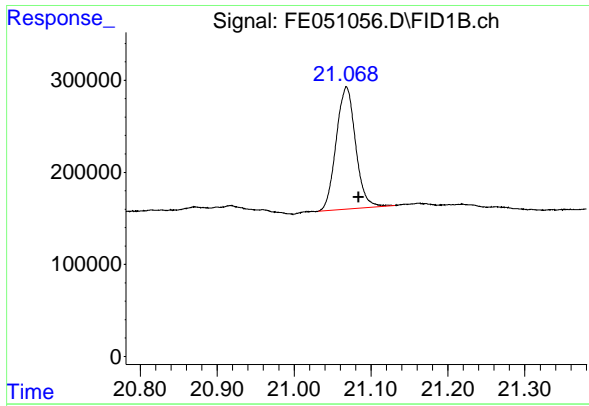
#19 n-Tetraatriacontane (C34)

R.T.: 19.605 min
Delta R.T.: -0.014 min
Response: 2833027
Conc: 19.29 ug/ml



#20 n-Hexatriacontane (C36)

R.T.: 20.344 min
Delta R.T.: -0.015 min
Response: 2653370
Conc: 20.92 ug/ml



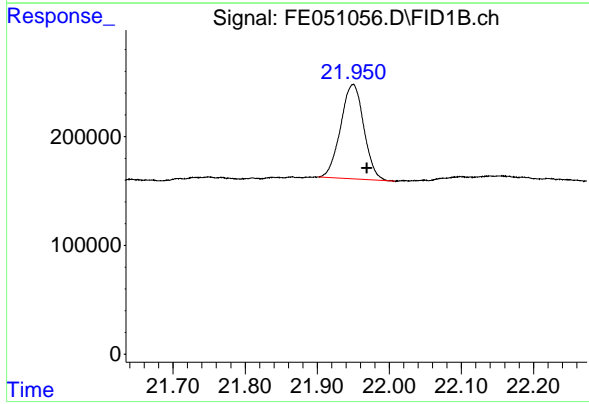
#21 n-Octatriacontane (C38)

R.T.: 21.068 min
Delta R.T.: -0.016 min
Response: 2320394
Conc: 18.77 ug/ml

Instrument : FID_E
ClientSampleId : 20 PPM ALIPHATIC HC STD

Manual Integrations
APPROVED

Reviewed By :Yogesh Patel 11/06/2024
Supervised By :Ankita Jodhani 11/06/2024



#22 n-Tetracontane (C40)

R.T.: 21.950 min
Delta R.T.: -0.020 min
Response: 1942634
Conc: 17.45 ug/ml