

Data Path : Z:\pestpcbsrv\HPCHEM1\FID_E\Data\FE110924AL\
 Data File : FE051120.D
 Signal(s) : FID1B.ch
 Acq On : 08 Nov 2024 15:08
 Operator : YP\AJ
 Sample : P4739-13DL 5X
 Misc :
 ALS Vial : 22 Sample Multiplier: 1

Instrument :
 FID_E
 ClientSampleId :

Integration File: autoint1.e
 Quant Time: Nov 09 00:42:42 2024
 Quant Method : Z:\pestpcbsrv\HPCHEM1\FID_E\methods\Aliphatic EPH 110724.M
 Quant Title : GC Extractables
 QLast Update : Thu Nov 07 04:56:04 2024
 Response via : Initial Calibration
 Integrator: ChemStation

Volume Inj. : 1 ul
 Signal Phase : Rxi-1ms
 Signal Info : 20M x 0.18mm x 0.18um

Compound	R.T.	Response	Conc Units

System Monitoring Compounds			
9) S ortho-Terphenyl (SURR)	11.851	1756237	11.701 ug/ml
Spiked Amount	50.000	Recovery =	23.40%
12) S 1-chlorooctadecane (S...	13.284	1300409	11.454 ug/ml
Spiked Amount	50.000	Recovery =	22.91%

Target Compounds

(f)=RT Delta > 1/2 Window

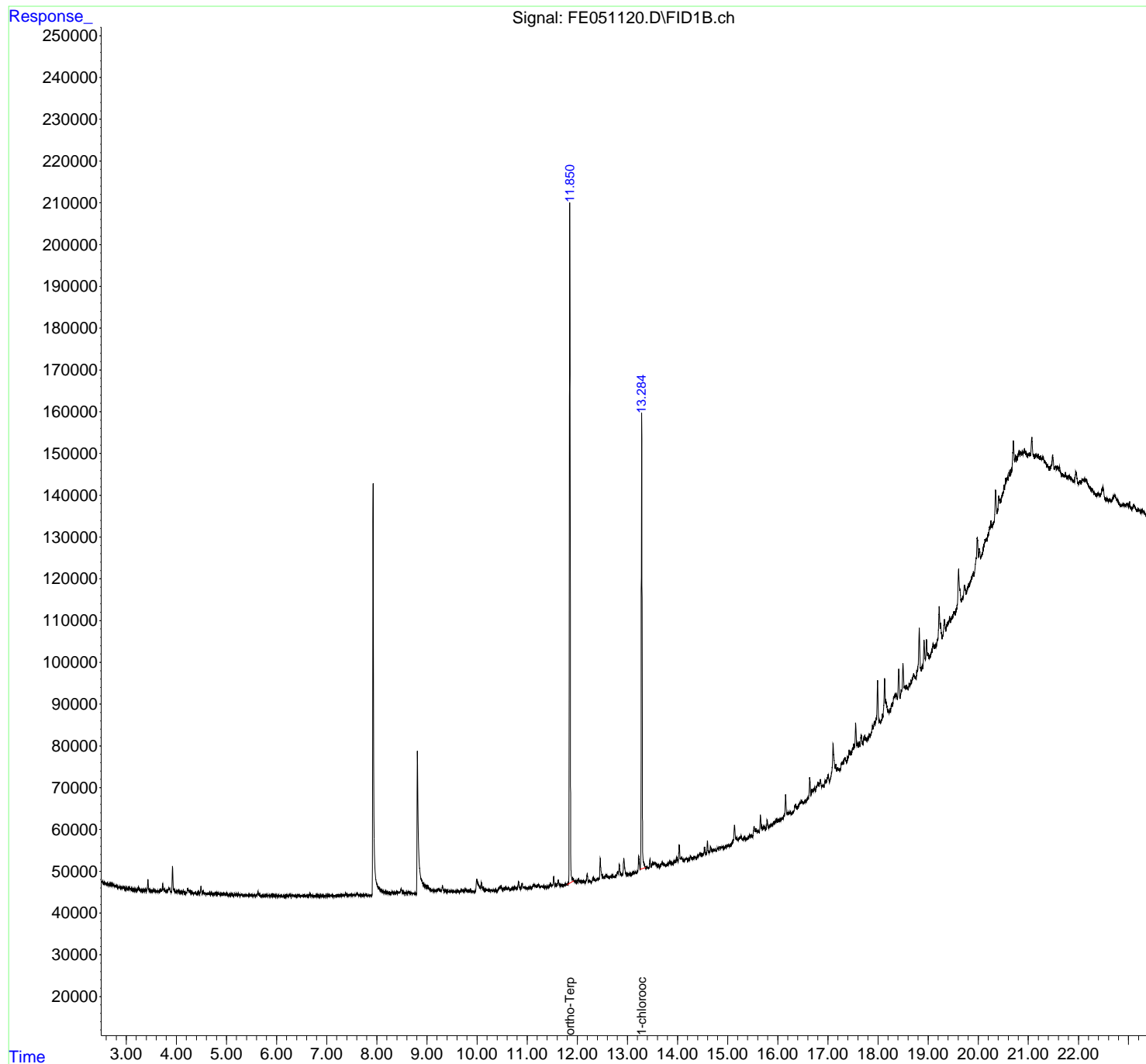
(m)=manual int.

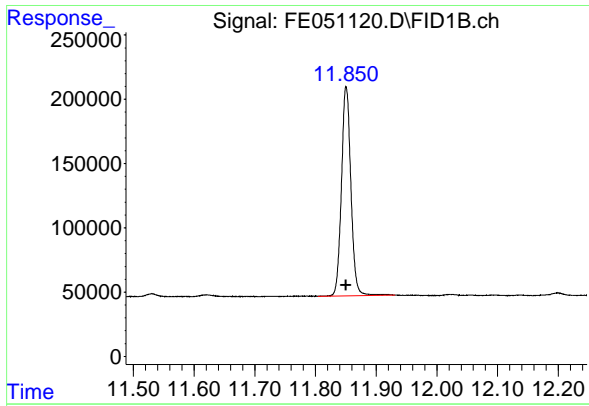
Data Path : Z:\pestpcbsrv\HPCHEM1\FID_E\Data\FE110924AL\
Data File : FE051120.D
Signal(s) : FID1B.ch
Acq On : 08 Nov 2024 15:08
Operator : YP\AJ
Sample : P4739-13DL 5X
Misc :
ALS Vial : 22 Sample Multiplier: 1

Instrument :
FID_E
ClientSampleId :

Integration File: autoint1.e
Quant Time: Nov 09 00:42:42 2024
Quant Method : Z:\pestpcbsrv\HPCHEM1\FID_E\methods\Aliphatic EPH 110724.M
Quant Title : GC Extractables
QLast Update : Thu Nov 07 04:56:04 2024
Response via : Initial Calibration
Integrator: ChemStation

Volume Inj. : 1 ul
Signal Phase : Rxi-1ms
Signal Info : 20M x 0.18mm x 0.18um

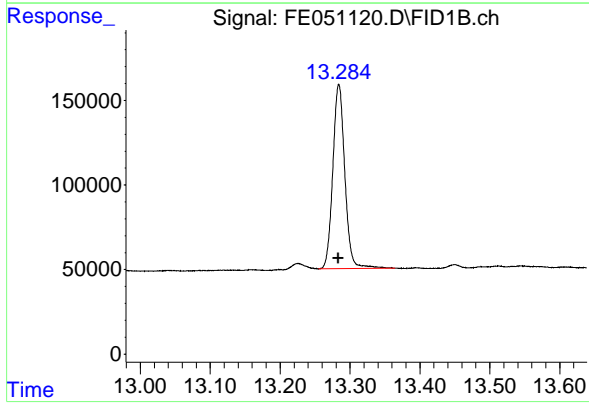




#9 ortho-Terphenyl (SURR)

R.T.: 11.851 min
Delta R.T.: 0.000 min
Response: 1756237
Conc: 11.70 ug/ml

Instrument :
FID_E
ClientSampleId :



#12 1-chlorooctadecane (SURR)

R.T.: 13.284 min
Delta R.T.: 0.000 min
Response: 1300409
Conc: 11.45 ug/ml