

Data Path : Z:\pestpcbsrv\HPCHEM1\FID_E\Data\FE110924AL\
 Data File : FE051127.D
 Signal(s) : FID1B.ch
 Acq On : 08 Nov 2024 19:38
 Operator : YP\AJ
 Sample : P4721-10
 Misc :
 ALS Vial : 27 Sample Multiplier: 1

Instrument :
 FID_E
 ClientSampleId :

Integration File: autoint1.e
 Quant Time: Nov 09 00:43:49 2024
 Quant Method : Z:\pestpcbsrv\HPCHEM1\FID_E\methods\Aliphatic EPH 110724.M
 Quant Title : GC Extractables
 QLast Update : Thu Nov 07 04:56:04 2024
 Response via : Initial Calibration
 Integrator: ChemStation

Volume Inj. : 1 ul
 Signal Phase : Rxi-1ms
 Signal Info : 20M x 0.18mm x 0.18um

Compound	R.T.	Response	Conc Units

System Monitoring Compounds			
12) S 1-chlorooctadecane (S...	13.286	3707687	32.658 ug/ml
Spiked Amount	50.000	Recovery	= 65.32%

Target Compounds

(f)=RT Delta > 1/2 Window

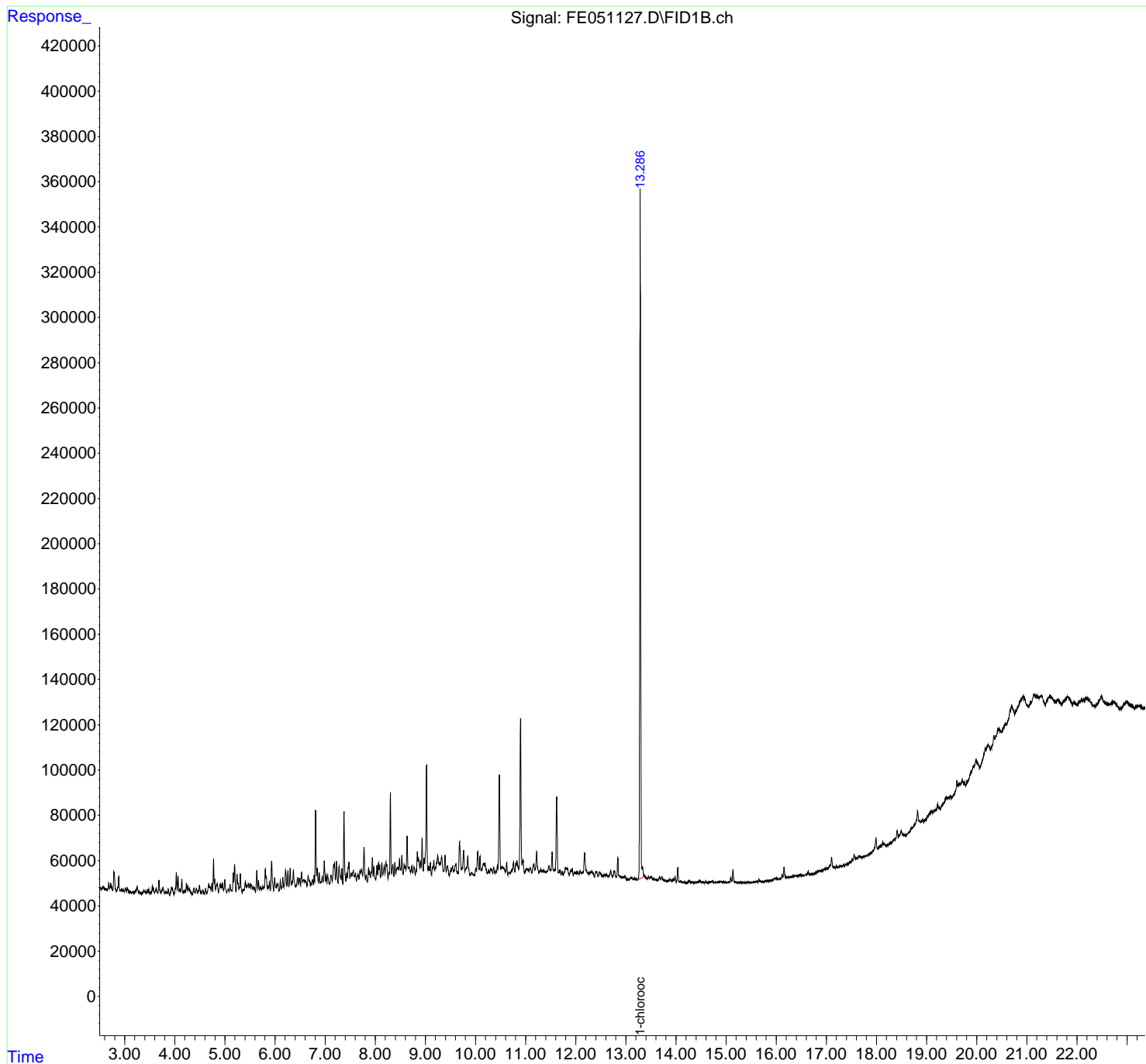
(m)=manual int.

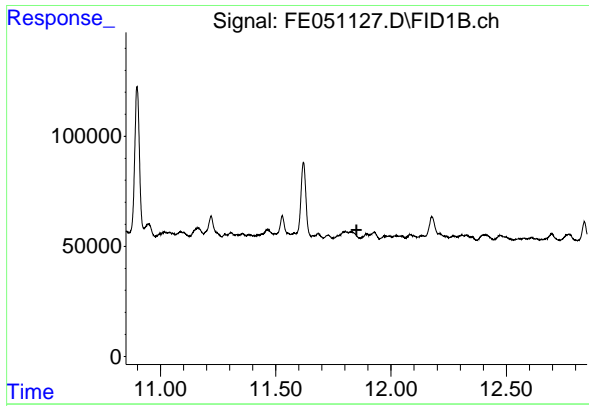
Data Path : Z:\pestpcbsrv\HPCHEM1\FID_E\Data\FE110924AL\
 Data File : FE051127.D
 Signal(s) : FID1B.ch
 Acq On : 08 Nov 2024 19:38
 Operator : YP\AJ
 Sample : P4721-10
 Misc :
 ALS Vial : 27 Sample Multiplier: 1

Instrument :
 FID_E
 ClientSampleId :

Integration File: autoint1.e
 Quant Time: Nov 09 00:43:49 2024
 Quant Method : Z:\pestpcbsrv\HPCHEM1\FID_E\methods\Aliphatic EPH 110724.M
 Quant Title : GC Extractables
 QLast Update : Thu Nov 07 04:56:04 2024
 Response via : Initial Calibration
 Integrator: ChemStation

Volume Inj. : 1 ul
 Signal Phase : Rxi-1ms
 Signal Info : 20M x 0.18mm x 0.18um

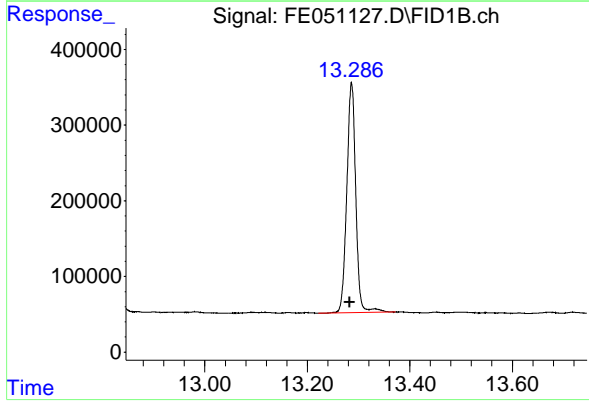




#9 ortho-Terphenyl (SURR)

R.T.: 0.000 min
 Exp R.T.: 11.850 min
 Response: 0
 Conc: N.D.

Instrument :
 FID_E
 ClientSampleId :



#12 1-chlorooctadecane (SURR)

R.T.: 13.286 min
 Delta R.T.: 0.003 min
 Response: 3707687
 Conc: 32.66 ug/ml