

Data Path : Z:\pestpcbsrv\HPCHEM1\FID\_E\Data\FE111018AL\  
 Data File : FE029104.D  
 Signal(s) : FID1B.CH  
 Acq On : 09 Nov 2018 17:25  
 Operator : AJ\SJ  
 Sample : J5838-05  
 Misc :  
 ALS Vial : 10 Sample Multiplier: 1

Integration File: autoint1.e  
 Quant Time: Nov 09 22:30:52 2018  
 Quant Method : Z:\pestpcbsrv\HPCHEM1\FID\_E\methods\Alaphatic EPH 111018.M  
 Quant Title : GC Extractables  
 QLast Update : Fri Nov 09 14:29:53 2018  
 Response via : Initial Calibration  
 Integrator: ChemStation 6890 Scale Mode: Large solvent peaks clipped

Volume Inj. : 1 ul  
 Signal Phase : Rxi-1ms  
 Signal Info : 20M x 0.18mm x 0.18um

| Compound                       | R.T.   | Response | Conc Units   |
|--------------------------------|--------|----------|--------------|
| -----                          |        |          |              |
| System Monitoring Compounds    |        |          |              |
| 9) S ortho-Terphenyl (SURR)    | 11.792 | 8439863  | 38.029 ug/ml |
| Spiked Amount                  | 50.000 | Recovery | = 76.06%     |
| 12) S 1-chlorooctadecane (S... | 13.223 | 6209943  | 34.053 ug/ml |
| Spiked Amount                  | 50.000 | Recovery | = 68.11%     |
| Target Compounds               |        |          |              |
| 6) T n-Tetradecane (C14)       | 8.468  | 511841   | 2.790 ug/ml  |
| 14) T n-Tetracosane (C24)      | 15.086 | 381437   | <MDL ug/ml   |
| 15) T n-Hexacosane (C26)       | 16.096 | 160543   | <MDL ug/ml   |
| 16) T n-Octacosane (C28)       | 17.049 | 271405   | <MDL ug/ml   |
| 17) T n-Tricontane (C30)       | 17.940 | 293643   | <MDL ug/ml   |
| 18) T n-Dotriacontane (C32)    | 18.774 | 285314   | <MDL ug/ml   |
| -----                          |        |          |              |

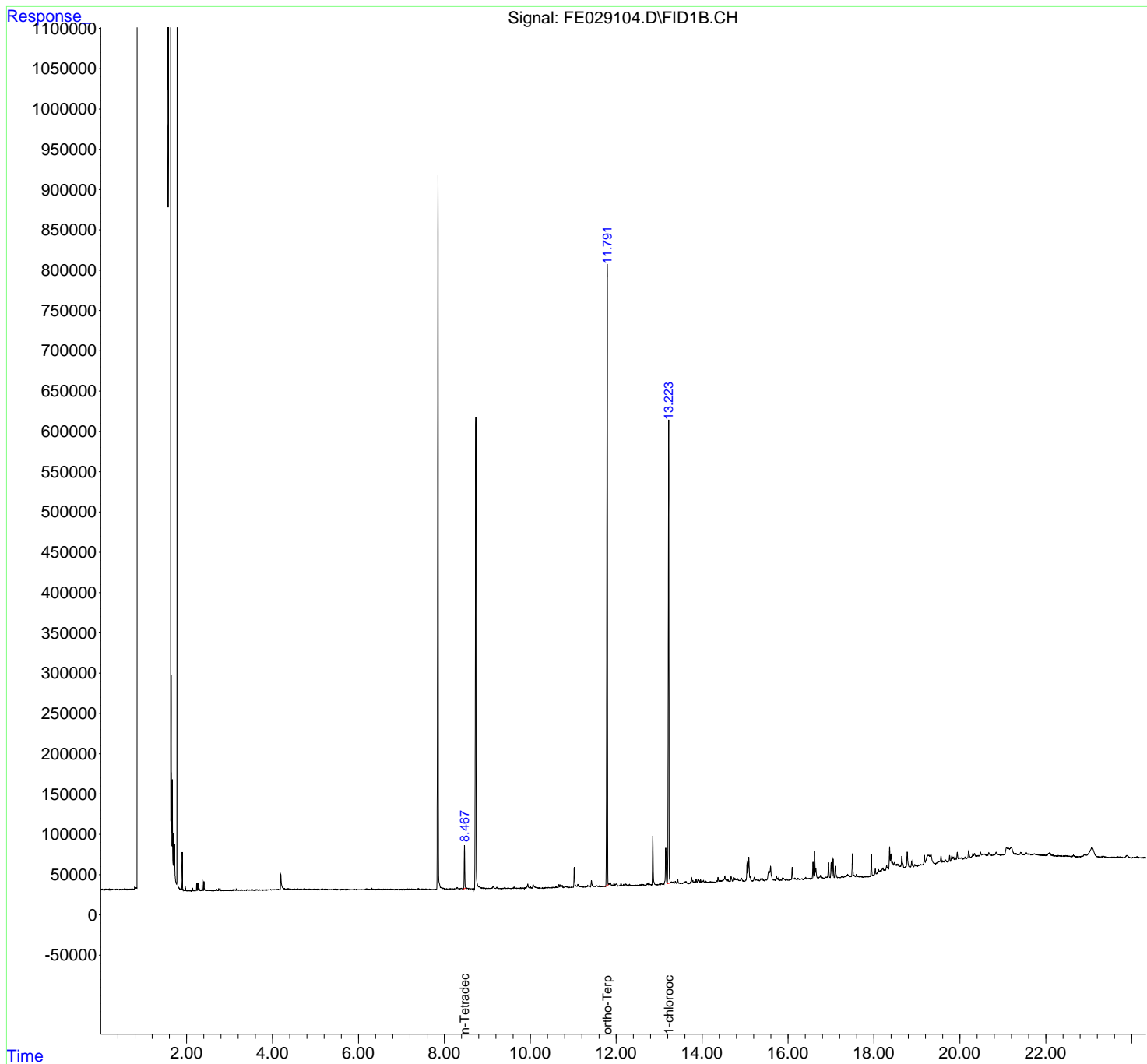
(f)=RT Delta > 1/2 Window

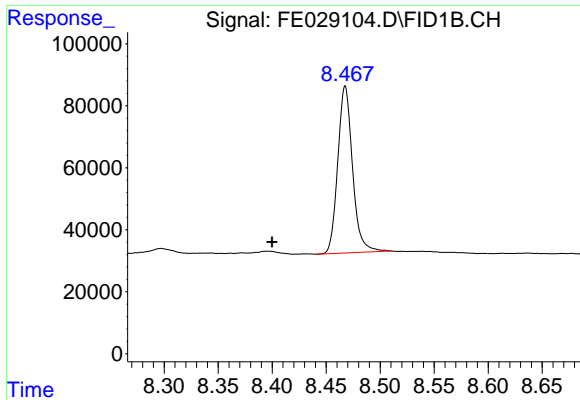
(m)=manual int.

Data Path : Z:\pestpcbsrv\HPCHEM1\FID\_E\Data\FE111018AL\  
Data File : FE029104.D  
Signal(s) : FID1B.CH  
Acq On : 09 Nov 2018 17:25  
Operator : AJ\SJ  
Sample : J5838-05  
Misc :  
ALS Vial : 10 Sample Multiplier: 1

Integration File: autoint1.e  
Quant Time: Nov 09 22:30:52 2018  
Quant Method : Z:\pestpcbsrv\HPCHEM1\FID\_E\methods\Alaphatic EPH 111018.M  
Quant Title : GC Extractables  
QLast Update : Fri Nov 09 14:29:53 2018  
Response via : Initial Calibration  
Integrator: ChemStation 6890 Scale Mode: Large solvent peaks clipped

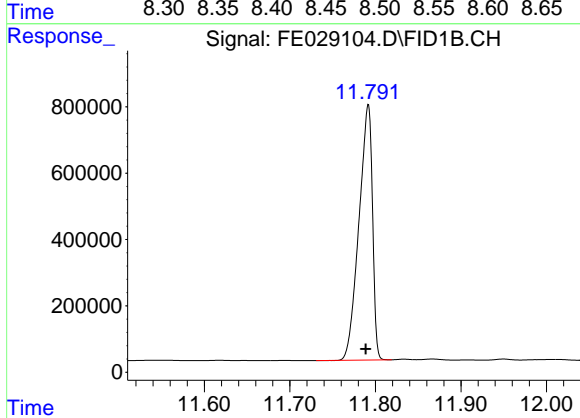
Volume Inj. : 1 ul  
Signal Phase : Rxi-1ms  
Signal Info : 20M x 0.18mm x 0.18um





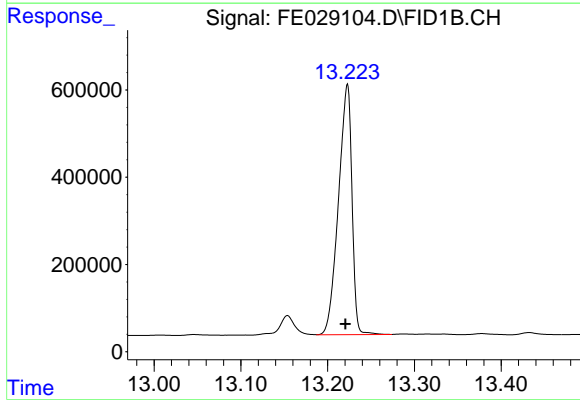
#6 n-Tetradecane (C14)

R.T.: 8.468 min  
Delta R.T.: 0.068 min  
Response: 511841  
Conc: 2.79 ug/ml



#9 ortho-Terphenyl (SURR)

R.T.: 11.792 min  
Delta R.T.: 0.003 min  
Response: 8439863  
Conc: 38.03 ug/ml



#12 1-chlorooctadecane (SURR)

R.T.: 13.223 min  
Delta R.T.: 0.002 min  
Response: 6209943  
Conc: 34.05 ug/ml