

Data Path : Z:\pestpcbsrv\HPCHEM1\FID_E\Data\FE111224AL\
 Data File : FE051173.D
 Signal(s) : FID1B.ch
 Acq On : 12 Nov 2024 15:13
 Operator : YP\AJ
 Sample : PB164909BS
 Misc :
 ALS Vial : 7 Sample Multiplier: 1

Instrument :
 FID_E
ClientSampleId :
 PB164909BS

Manual Integrations
APPROVED
 Reviewed By :Yogesh Patel 11/13/2024
 Supervised By :Ankita Jodhani 11/13/2024

Integration File: autoint1.e
 Quant Time: Nov 13 02:50:13 2024
 Quant Method : Z:\pestpcbsrv\HPCHEM1\FID_E\methods\Aliphatic EPH 110724.M
 Quant Title : GC Extractables
 QLast Update : Thu Nov 07 04:56:04 2024
 Response via : Initial Calibration
 Integrator: ChemStation

Volume Inj. : 1 ul
 Signal Phase : Rxi-1ms
 Signal Info : 20M x 0.18mm x 0.18um

Compound	R.T.	Response	Conc Units

System Monitoring Compounds			
9) S ortho-Terphenyl (SURR)	11.851	6472637	43.123 ug/ml
Spiked Amount	50.000	Recovery	= 86.25%
12) S 1-chlorooctadecane (S...	13.283	5138671	45.262 ug/ml
Spiked Amount	50.000	Recovery	= 90.52%
Target Compounds			
1) T n-Nonane (C9)	3.251	7396322	53.454 ug/ml
2) T n-Decane (C10)	4.496	7705620	54.970 ug/ml
3) T A~Naphthalene (C11.7)	6.202	7553343	57.288 ug/ml
4) T n-Dodecane (C12)	6.658	7796532	55.217 ug/ml
5) T A~2-methylnaphthalene...	7.298	6721458	53.731 ug/ml
6) T n-Tetradecane (C14)	8.486	7563804	54.274 ug/ml
7) T n-Hexadecane (C16)	10.089	7248519	51.079 ug/ml
8) T n-Octadecane (C18)	11.530	7078590	49.568 ug/mlm
10) T n-Eicosane (C20)	12.839	6875979	50.243 ug/ml
11) T n-Heneicosane (C21)	13.449	6559081	49.079 ug/ml
13) T n-Docosane (C22)	14.034	6484058	48.771 ug/ml
14) T n-Tetracosane (C24)	15.137	12602193	94.998 ug/ml
15) T n-Hexacosane (C26)	16.157	6446989	48.159 ug/ml
16) T n-Octacosane (C28)	17.104	7358438	53.976 ug/ml
17) T n-Tricontane (C30)	17.992	6809057	46.866 ug/ml
18) T n-Dotriacontane (C32)	18.822	6842553	46.083 ug/ml
19) T n-Tetratriacontane (C34)	19.605	7021864	52.259 ug/ml
20) T n-Hexatriacontane (C36)	20.346	6820158	57.159 ug/ml
21) T n-Octatriacontane (C38)	21.069	6512887	57.223 ug/ml
22) T n-Tetracontane (C40)	21.950	5586620	50.230 ug/ml

(f)=RT Delta > 1/2 Window

(m)=manual int.

Data Path : Z:\pestpcbsrv\HPCHEM1\FID_E\Data\FE11224AL\
 Data File : FE051173.D
 Signal(s) : FID1B.ch
 Acq On : 12 Nov 2024 15:13
 Operator : YP\AJ
 Sample : PB164909BS
 Misc :
 ALS Vial : 7 Sample Multiplier: 1

Instrument :

FID_E

ClientSampleId :

PB164909BS

Manual Integrations

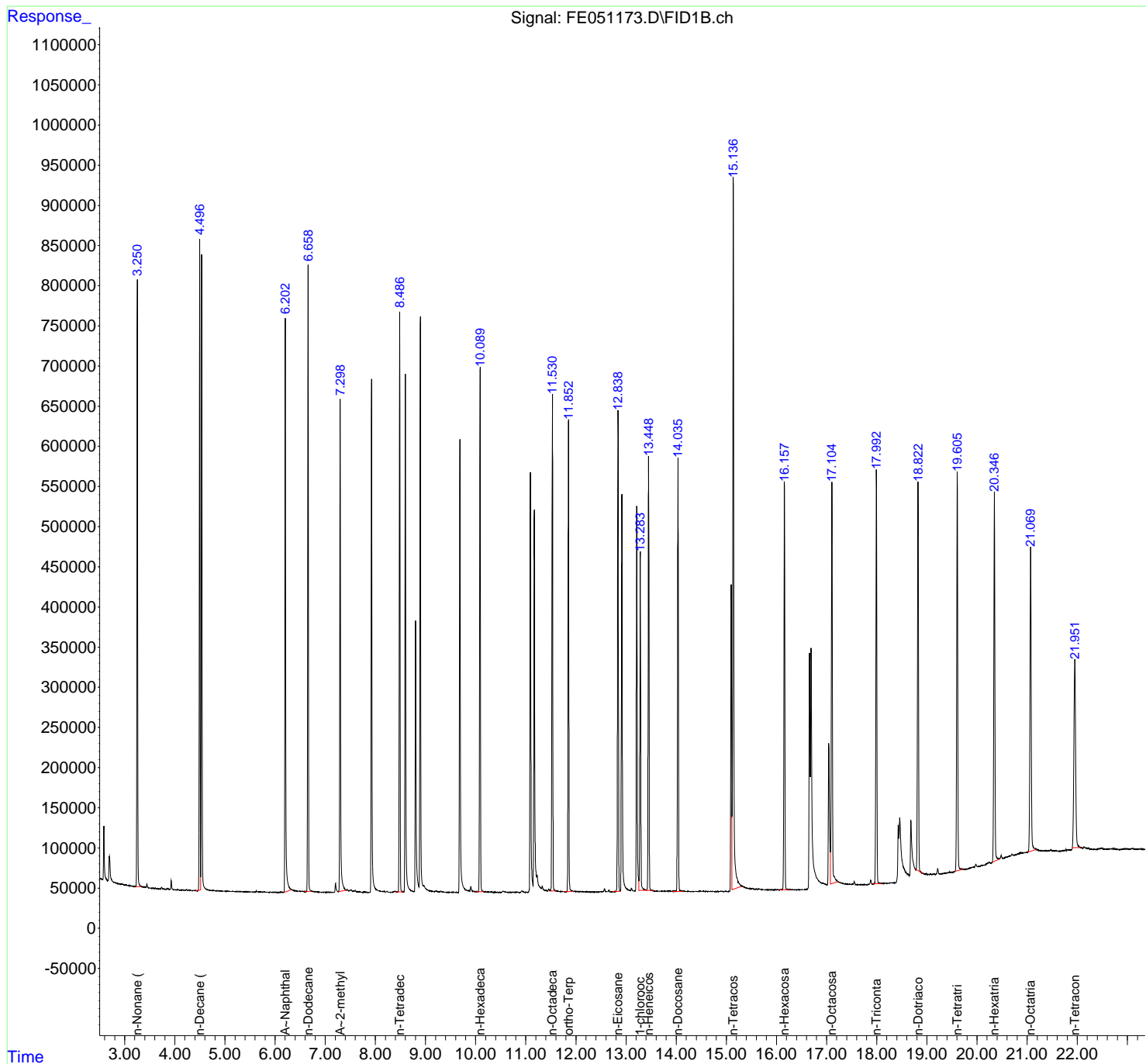
APPROVED

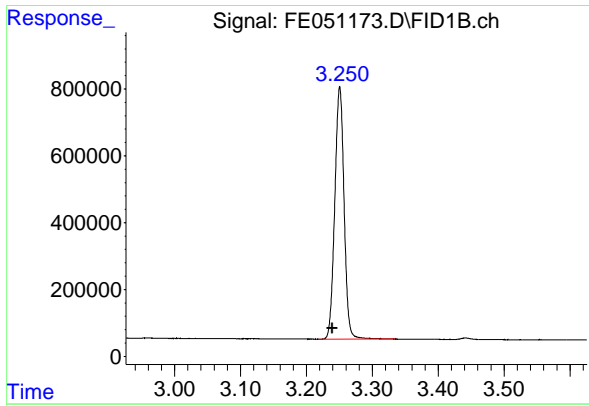
Reviewed By :Yogesh Patel 11/13/2024

Supervised By :Ankita Jodhani 11/13/2024

Integration File: autoint1.e
 Quant Time: Nov 13 02:50:13 2024
 Quant Method : Z:\pestpcbsrv\HPCHEM1\FID_E\methods\Aliphatic EPH 110724.
 Quant Title : GC Extractables
 QLast Update : Thu Nov 07 04:56:04 2024
 Response via : Initial Calibration
 Integrator: ChemStation

Volume Inj. : 1 ul
 Signal Phase : Rxi-1ms
 Signal Info : 20M x 0.18mm x 0.18um





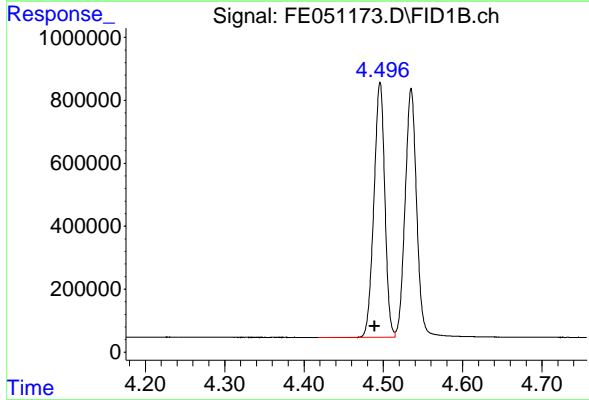
#1 n-Nonane (C9)

R.T.: 3.251 min
 Delta R.T.: 0.012 min
 Response: 7396322
 Conc: 53.45 ug/ml

Instrument :
 FID_E
 Client Sample Id :
 PB164909BS

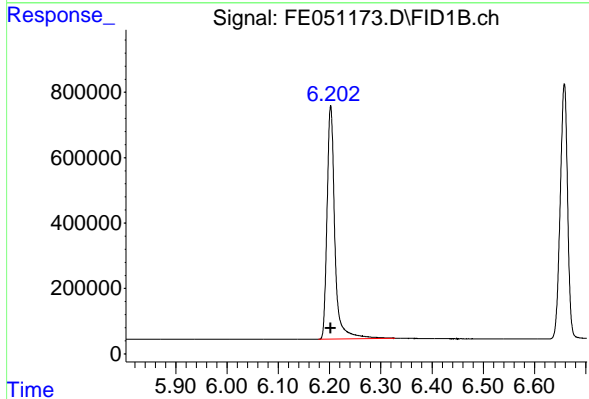
Manual Integrations
 APPROVED

Reviewed By :Yogesh Patel 11/13/2024
 Supervised By :Ankita Jodhani 11/13/2024



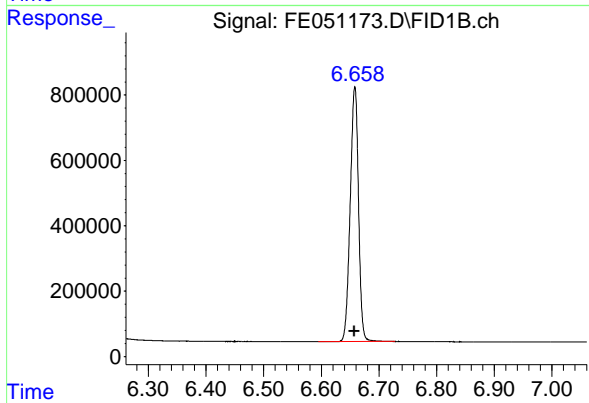
#2 n-Decane (C10)

R.T.: 4.496 min
 Delta R.T.: 0.006 min
 Response: 7705620
 Conc: 54.97 ug/ml



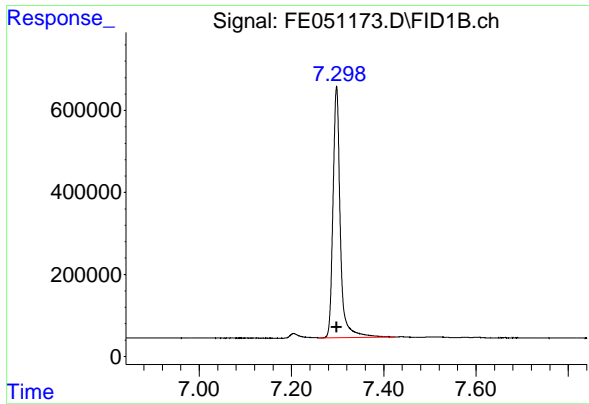
#3 A~Naphthalene (C11.7)

R.T.: 6.202 min
 Delta R.T.: 0.000 min
 Response: 7553343
 Conc: 57.29 ug/ml



#4 n-Dodecane (C12)

R.T.: 6.658 min
 Delta R.T.: 0.000 min
 Response: 7796532
 Conc: 55.22 ug/ml



#5 A~2-methylnaphthalene (C12.89)

R.T.: 7.298 min
 Delta R.T.: 0.000 min
 Response: 6721458
 Conc: 53.73 ug/ml

Instrument :

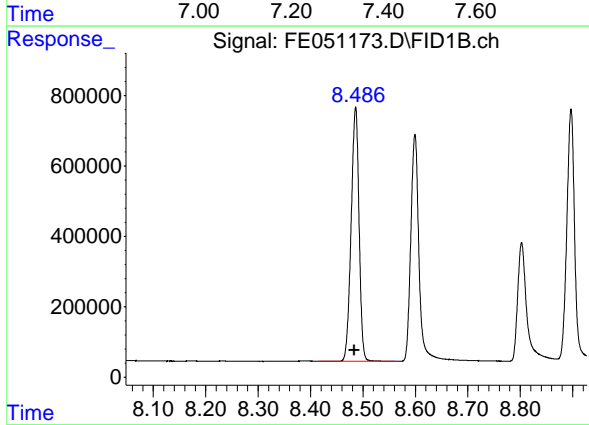
FID_E

ClientSampleId :

PB164909BS

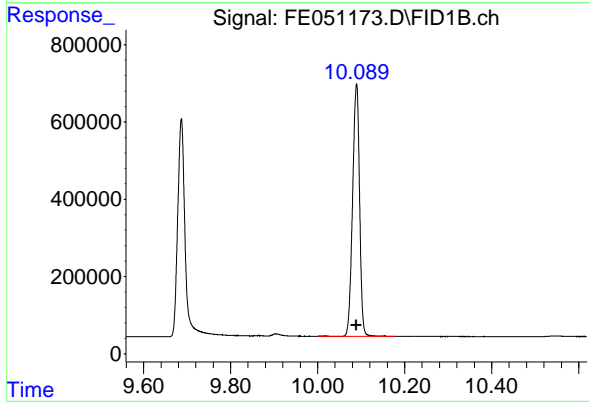
Manual Integrations
 APPROVED

Reviewed By :Yogesh Patel 11/13/2024
 Supervised By :Ankita Jodhani 11/13/2024



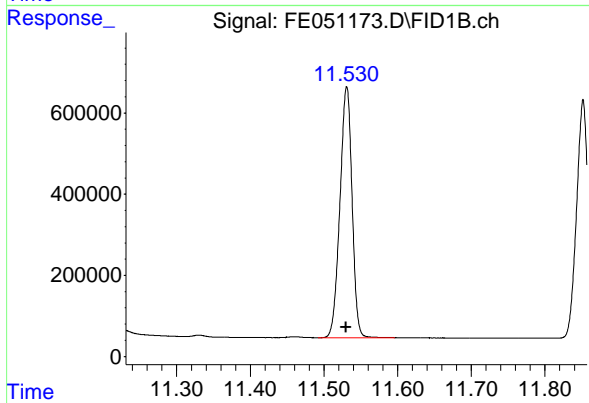
#6 n-Tetradecane (C14)

R.T.: 8.486 min
 Delta R.T.: 0.002 min
 Response: 7563804
 Conc: 54.27 ug/ml



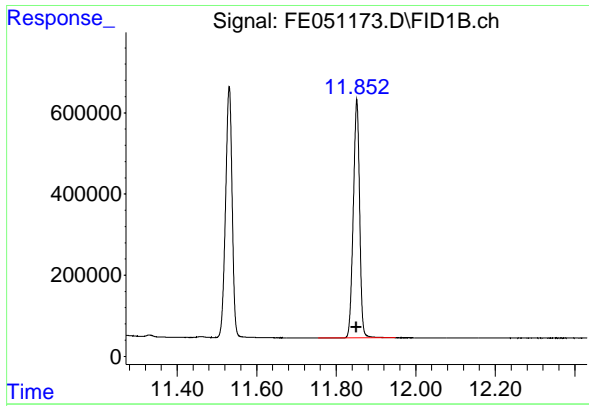
#7 n-Hexadecane (C16)

R.T.: 10.089 min
 Delta R.T.: 0.000 min
 Response: 7248519
 Conc: 51.08 ug/ml



#8 n-Octadecane (C18)

R.T.: 11.530 min
 Delta R.T.: 0.000 min
 Response: 7078590
 Conc: 49.57 ug/ml m



#9 ortho-Terphenyl (SURR)

R.T.: 11.851 min
 Delta R.T.: 0.000 min
 Response: 6472637
 Conc: 43.12 ug/ml

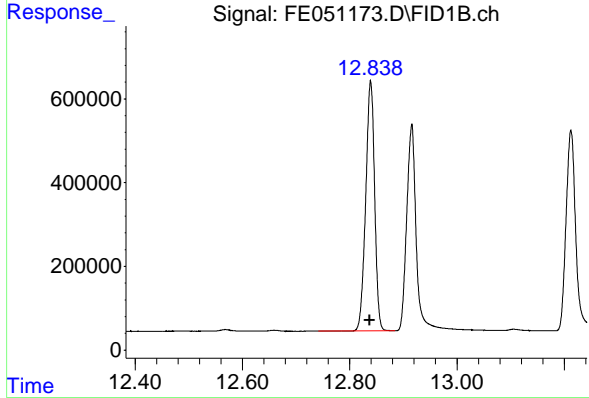
Instrument :

FID_E

Client Sample Id :
 PB164909BS

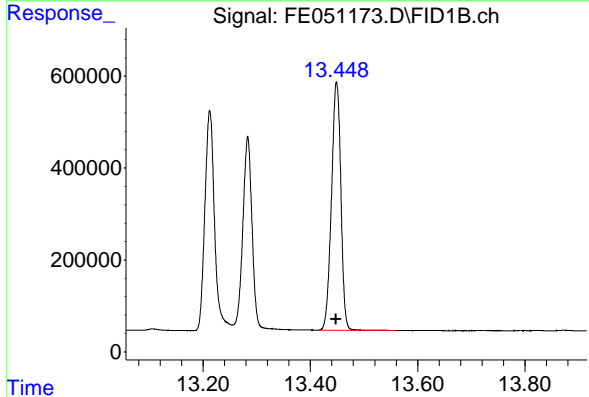
Manual Integrations
 APPROVED

Reviewed By :Yogesh Patel 11/13/2024
 Supervised By :Ankita Jodhani 11/13/2024



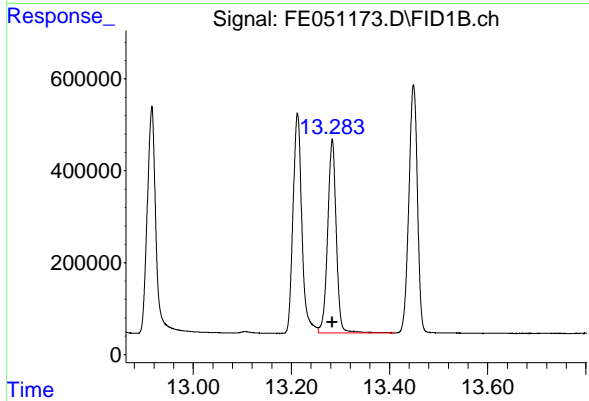
#10 n-Eicosane (C20)

R.T.: 12.839 min
 Delta R.T.: 0.002 min
 Response: 6875979
 Conc: 50.24 ug/ml



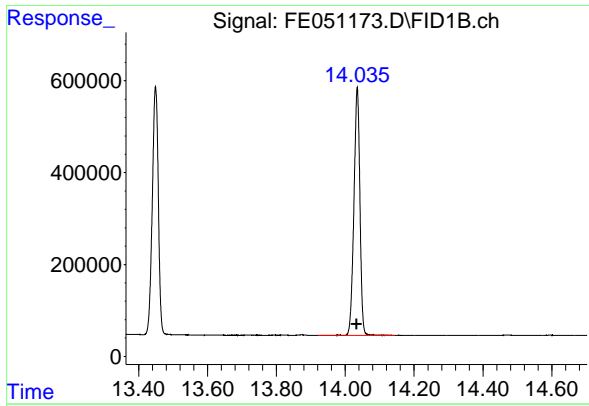
#11 n-Heneicosane (C21)

R.T.: 13.449 min
 Delta R.T.: 0.000 min
 Response: 6559081
 Conc: 49.08 ug/ml



#12 1-chlorooctadecane (SURR)

R.T.: 13.283 min
 Delta R.T.: 0.000 min
 Response: 5138671
 Conc: 45.26 ug/ml



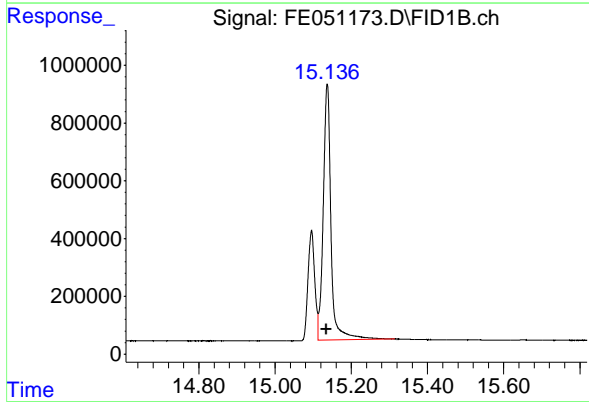
#13 n-Docosane (C22)

R.T.: 14.034 min
 Delta R.T.: 0.000 min
 Response: 6484058
 Conc: 48.77 ug/ml

Instrument :
 FID_E
 Client Sample Id :
 PB164909BS

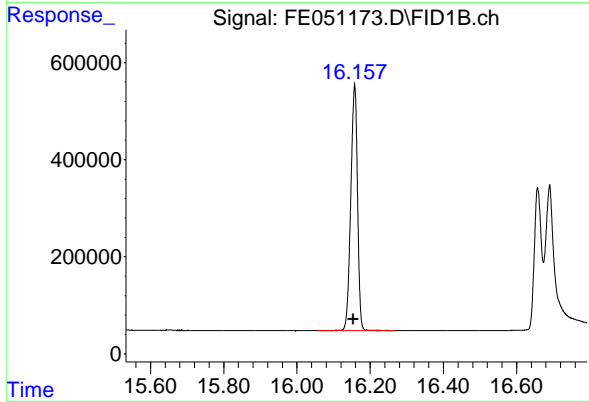
Manual Integrations
 APPROVED

Reviewed By :Yogesh Patel 11/13/2024
 Supervised By :Ankita Jodhani 11/13/2024



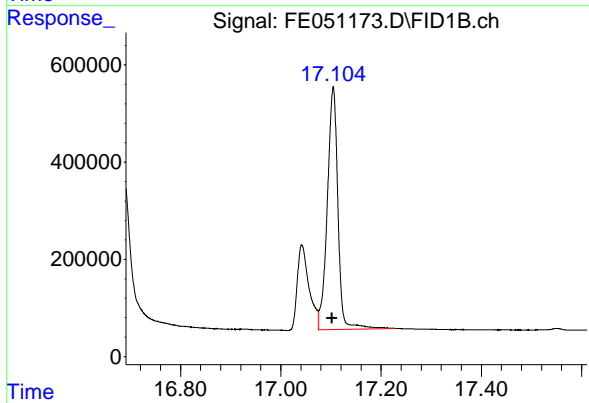
#14 n-Tetracosane (C24)

R.T.: 15.137 min
 Delta R.T.: 0.002 min
 Response: 12602193
 Conc: 95.00 ug/ml



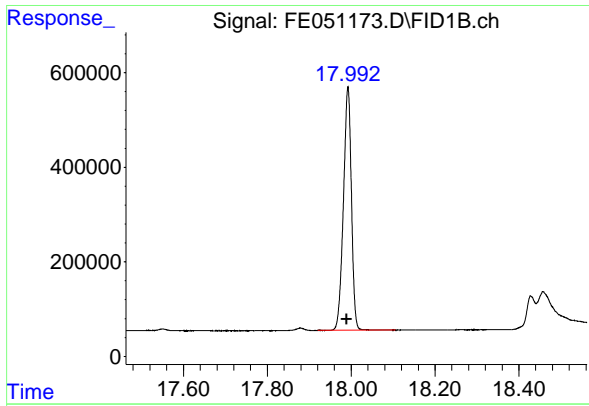
#15 n-Hexacosane (C26)

R.T.: 16.157 min
 Delta R.T.: 0.003 min
 Response: 6446989
 Conc: 48.16 ug/ml



#16 n-Octacosane (C28)

R.T.: 17.104 min
 Delta R.T.: 0.002 min
 Response: 7358438
 Conc: 53.98 ug/ml



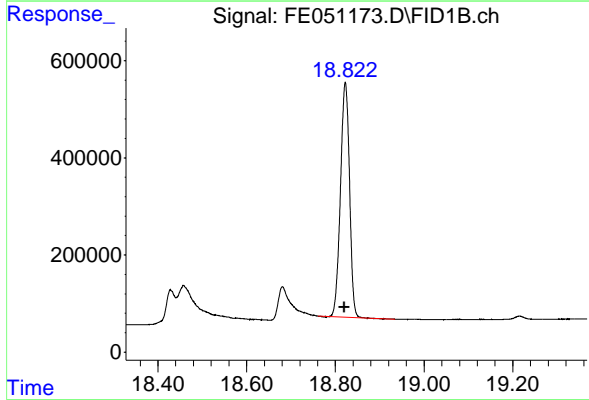
#17 n-Tricontane (C30)

R.T.: 17.992 min
 Delta R.T.: 0.003 min
 Response: 6809057
 Conc: 46.87 ug/ml

Instrument :
 FID_E
 ClientSampleId :
 PB164909BS

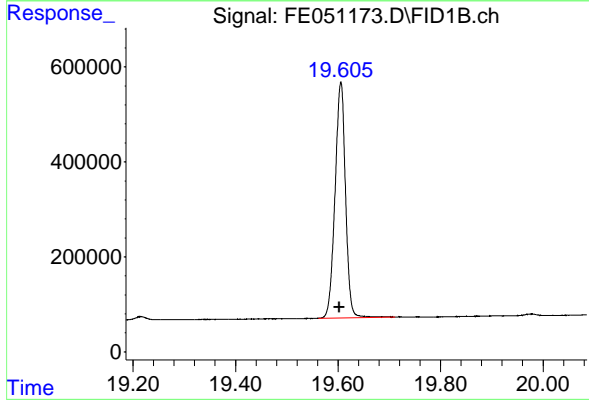
Manual Integrations
 APPROVED

Reviewed By :Yogesh Patel 11/13/2024
 Supervised By :Ankita Jodhani 11/13/2024



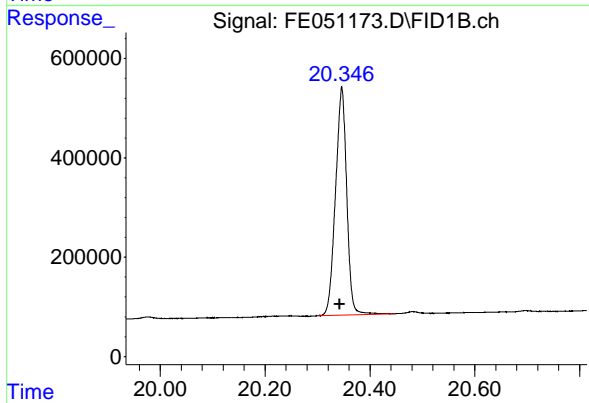
#18 n-Dotriacontane (C32)

R.T.: 18.822 min
 Delta R.T.: 0.002 min
 Response: 6842553
 Conc: 46.08 ug/ml



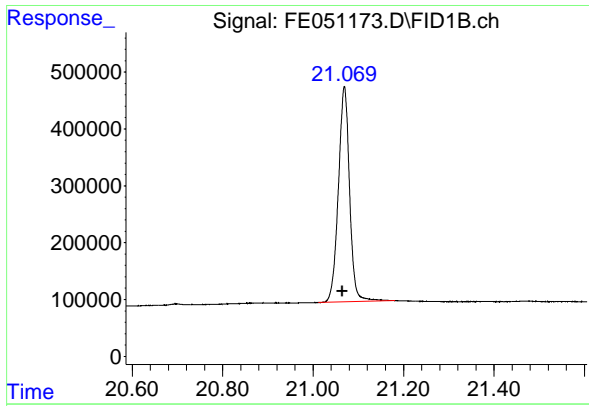
#19 n-Tetracontane (C34)

R.T.: 19.605 min
 Delta R.T.: 0.003 min
 Response: 7021864
 Conc: 52.26 ug/ml



#20 n-Hexatriacontane (C36)

R.T.: 20.346 min
 Delta R.T.: 0.004 min
 Response: 6820158
 Conc: 57.16 ug/ml



#21 n-Octatriacontane (C38)

R.T.: 21.069 min
 Delta R.T.: 0.004 min
 Response: 6512887
 Conc: 57.22 ug/ml

Instrument :

FID_E

Client Sample Id :

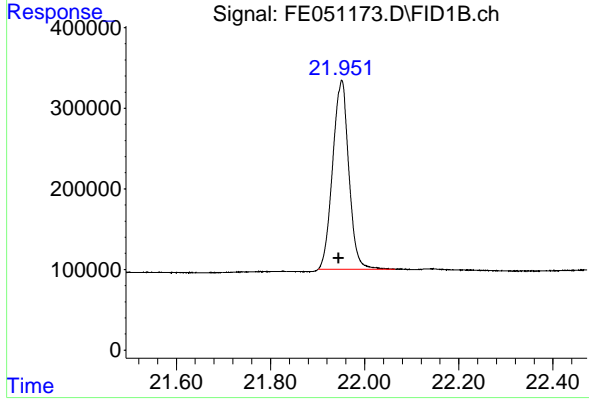
PB164909BS

Manual Integrations

APPROVED

Reviewed By :Yogesh Patel 11/13/2024

Supervised By :Ankita Jodhani 11/13/2024



#22 n-Tetracontane (C40)

R.T.: 21.950 min
 Delta R.T.: 0.006 min
 Response: 5586620
 Conc: 50.23 ug/ml