

Data Path : Z:\pestpcbsrv\HPCHEM1\FID_E\Data\FE111324AL\
 Data File : FE051199.D
 Signal(s) : FID1B.ch
 Acq On : 13 Nov 2024 15:11
 Operator : YP\AJ
 Sample : PB164942BS
 Misc :
 ALS Vial : 7 Sample Multiplier: 1

Instrument :

FID_E

ClientSampleId :

PB164942BS

Manual Integrations

APPROVED

Reviewed By :Yogesh Patel 11/14/2024

Supervised By :Ankita Jodhani 11/14/2024

Integration File: autoint1.e
 Quant Time: Nov 14 04:05:40 2024
 Quant Method : Z:\pestpcbsrv\HPCHEM1\FID_E\methods\Aliphatic EPH 110724.M
 Quant Title : GC Extractables
 QLast Update : Thu Nov 07 04:56:04 2024
 Response via : Initial Calibration
 Integrator: ChemStation

Volume Inj. : 1 ul
 Signal Phase : Rxi-1ms
 Signal Info : 20M x 0.18mm x 0.18um

Compound	R.T.	Response	Conc Units
System Monitoring Compounds			
9) S ortho-Terphenyl (SURR)	11.849	5873072	39.129 ug/ml
Spiked Amount	50.000	Recovery	= 78.26%
12) S 1-chlorooctadecane (S...	13.281	4753004	41.865 ug/ml
Spiked Amount	50.000	Recovery	= 83.73%
Target Compounds			
1) T n-Nonane (C9)	3.248	6905439	49.906 ug/ml
2) T n-Decane (C10)	4.494	7230936	51.584 ug/ml
3) T A~Naphthalene (C11.7)	6.201	7167717	54.363 ug/ml
4) T n-Dodecane (C12)	6.657	7397962	52.395 ug/ml
5) T A~2-methylnaphthalene...	7.296	6427354	51.380 ug/ml
6) T n-Tetradecane (C14)	8.484	7206449	51.710 ug/ml
7) T n-Hexadecane (C16)	10.088	6983642	49.213 ug/ml
8) T n-Octadecane (C18)	11.529	6937336	48.579 ug/ml
10) T n-Eicosane (C20)	12.837	6787622	49.597 ug/ml
11) T n-Heneicosane (C21)	13.447	6507424	48.692 ug/ml
13) T n-Docosane (C22)	14.033	6455884	48.559 ug/ml
14) T n-Tetracosane (C24)	15.134	12438288	93.762 ug/ml
15) T n-Hexacosane (C26)	16.154	6446330	48.154 ug/ml
16) T n-Octacosane (C28)	17.101	7469588	54.791 ug/ml
17) T n-Tricontane (C30)	17.989	6758112	46.515 ug/ml
18) T n-Dotriacontane (C32)	18.819	6750702	45.465 ug/ml
19) T n-Tetratriacontane (C34)	19.603	6896547	51.327 ug/ml
20) T n-Hexatriacontane (C36)	20.342	6728155	56.388 ug/ml
21) T n-Octatriacontane (C38)	21.065	6476027	56.899 ug/ml
22) T n-Tetracontane (C40)	21.945	5695054	51.205 ug/ml

(f)=RT Delta > 1/2 Window

(m)=manual int.

Data Path : Z:\pestpcbsrv\HPCHEM1\FID_E\Data\FE111324AL\
 Data File : FE051199.D
 Signal(s) : FID1B.ch
 Acq On : 13 Nov 2024 15:11
 Operator : YP\AJ
 Sample : PB164942BS
 Misc :
 ALS Vial : 7 Sample Multiplier: 1

Instrument :

FID_E

Client Sample Id :

PB164942BS

Manual Integrations

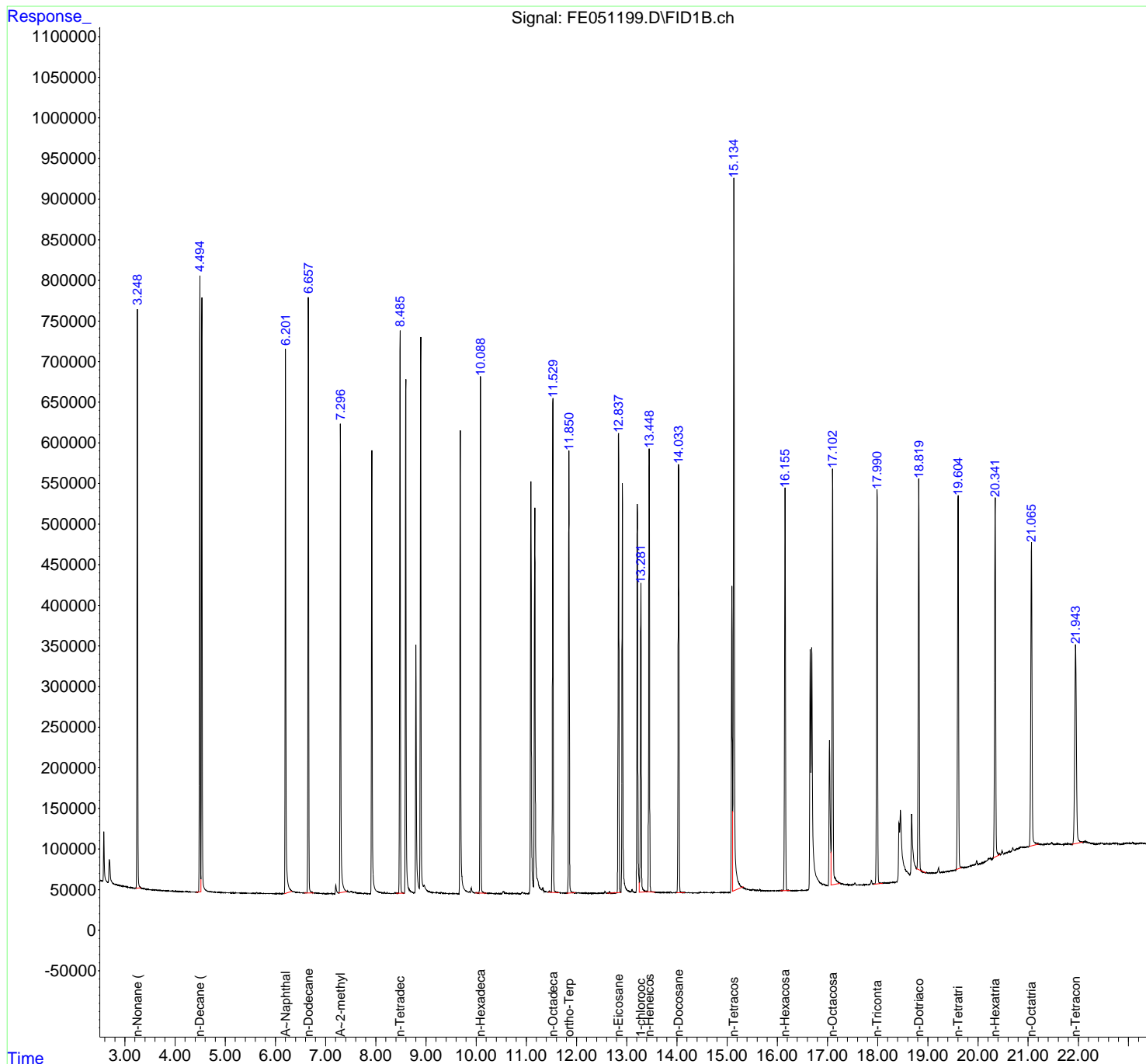
APPROVED

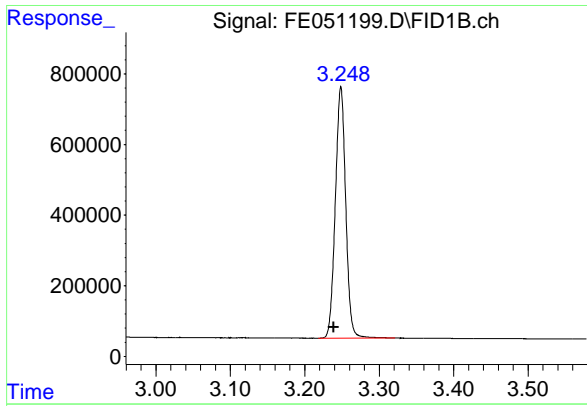
Reviewed By :Yogesh Patel 11/14/2024

Supervised By :Ankita Jodhani 11/14/2024

Integration File: autoint1.e
 Quant Time: Nov 14 04:05:40 2024
 Quant Method : Z:\pestpcbsrv\HPCHEM1\FID_E\methods\Aliphatic EPH 110724.
 Quant Title : GC Extractables
 QLast Update : Thu Nov 07 04:56:04 2024
 Response via : Initial Calibration
 Integrator: ChemStation

Volume Inj. : 1 ul
 Signal Phase : Rxi-1ms
 Signal Info : 20M x 0.18mm x 0.18um





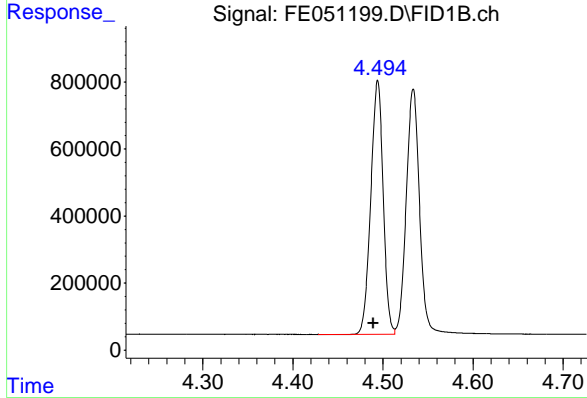
#1 n-Nonane (C9)

R.T.: 3.248 min
 Delta R.T.: 0.009 min
 Response: 6905439
 Conc: 49.91 ug/ml

Instrument : FID_E
 Client Sample Id : PB164942BS

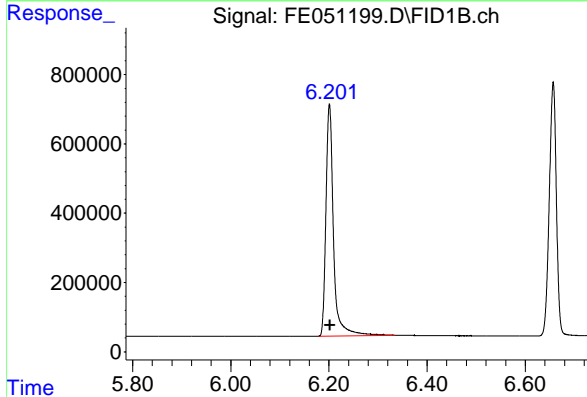
Manual Integrations
 APPROVED

Reviewed By :Yogesh Patel 11/14/2024
 Supervised By :Ankita Jodhani 11/14/2024



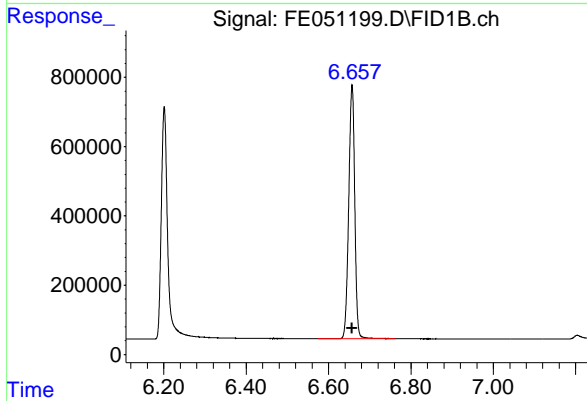
#2 n-Decane (C10)

R.T.: 4.494 min
 Delta R.T.: 0.005 min
 Response: 7230936
 Conc: 51.58 ug/ml



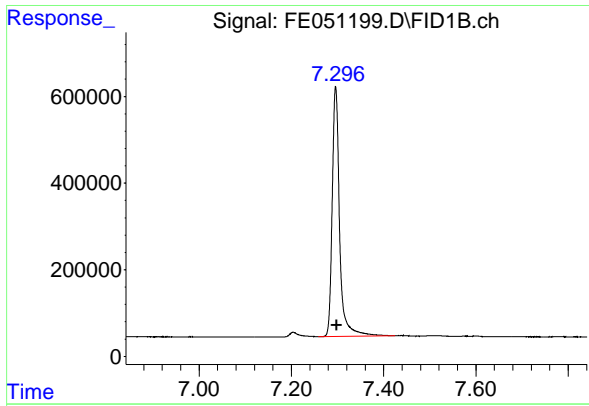
#3 A~Naphthalene (C11.7)

R.T.: 6.201 min
 Delta R.T.: 0.000 min
 Response: 7167717
 Conc: 54.36 ug/ml



#4 n-Dodecane (C12)

R.T.: 6.657 min
 Delta R.T.: 0.000 min
 Response: 7397962
 Conc: 52.39 ug/ml



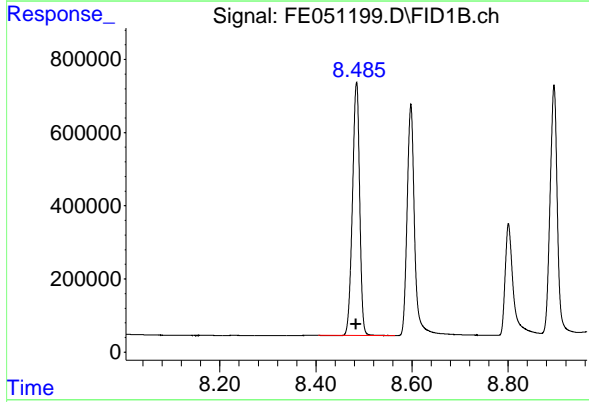
#5 A~2-methylnaphthalene (C12.89)

R.T.: 7.296 min
 Delta R.T.: -0.002 min
 Response: 6427354
 Conc: 51.38 ug/ml

Instrument :
 FID_E
 ClientSampleId :
 PB164942BS

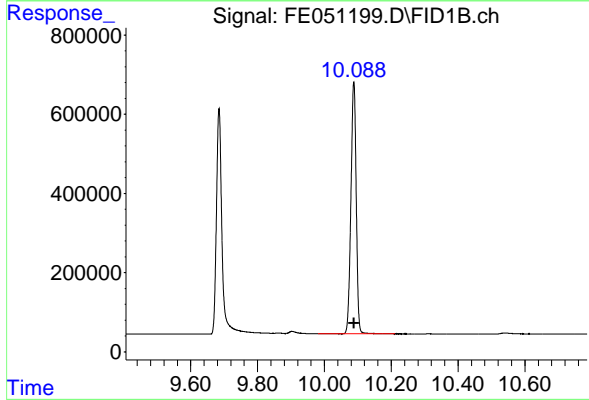
Manual Integrations
 APPROVED

Reviewed By :Yogesh Patel 11/14/2024
 Supervised By :Ankita Jodhani 11/14/2024



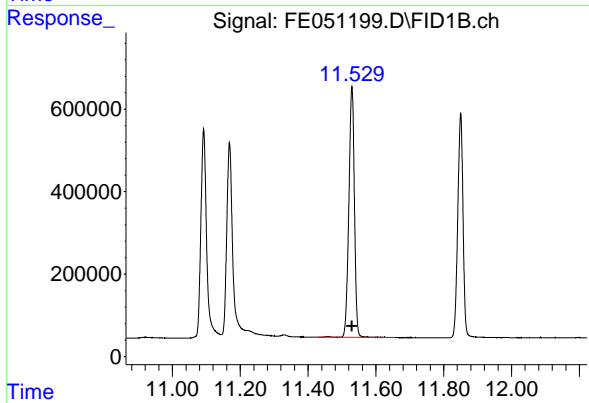
#6 n-Tetradecane (C14)

R.T.: 8.484 min
 Delta R.T.: 0.000 min
 Response: 7206449
 Conc: 51.71 ug/ml



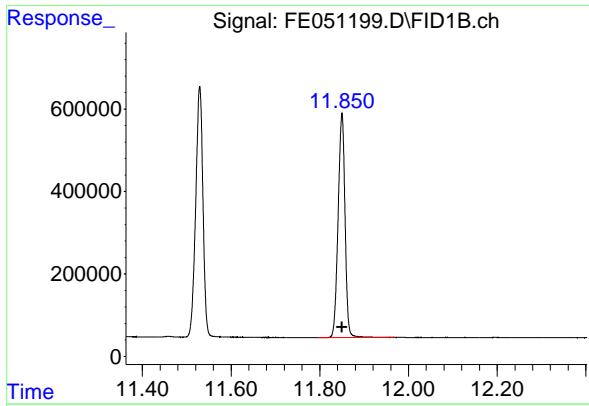
#7 n-Hexadecane (C16)

R.T.: 10.088 min
 Delta R.T.: 0.000 min
 Response: 6983642
 Conc: 49.21 ug/ml



#8 n-Octadecane (C18)

R.T.: 11.529 min
 Delta R.T.: 0.000 min
 Response: 6937336
 Conc: 48.58 ug/ml



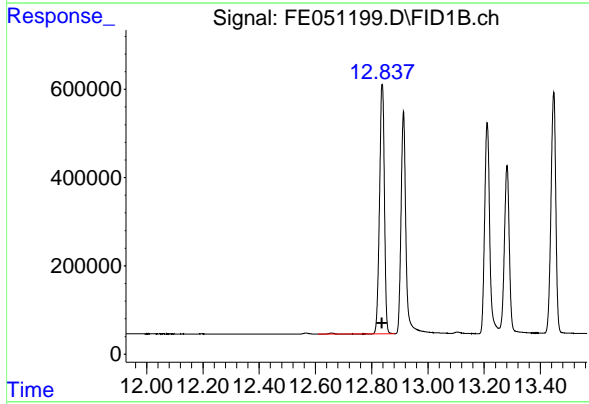
#9 ortho-Terphenyl (SURR)

R.T.: 11.849 min
 Delta R.T.: 0.000 min
 Response: 5873072
 Conc: 39.13 ug/ml

Instrument : FID_E
 ClientSampleId : PB164942BS

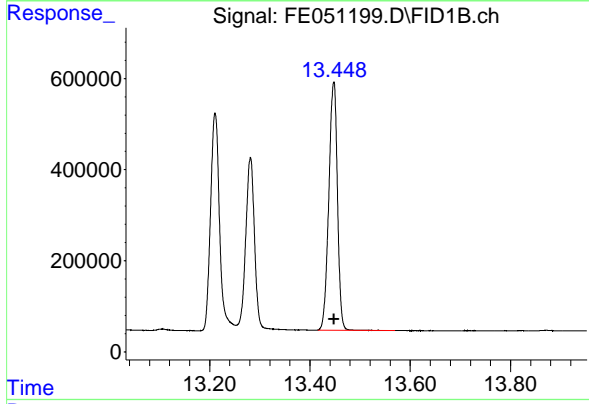
Manual Integrations
 APPROVED

Reviewed By :Yogesh Patel 11/14/2024
 Supervised By :Ankita Jodhani 11/14/2024



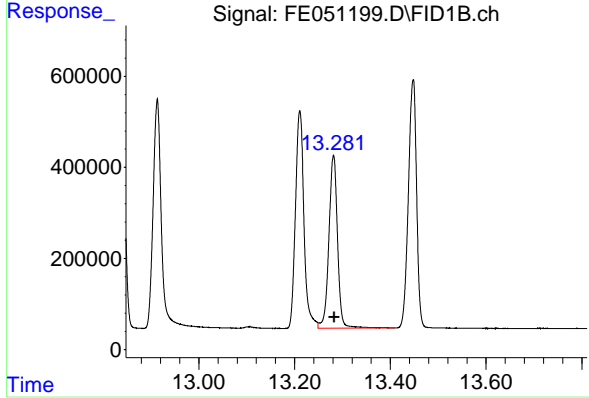
#10 n-Eicosane (C20)

R.T.: 12.837 min
 Delta R.T.: 0.000 min
 Response: 6787622
 Conc: 49.60 ug/ml



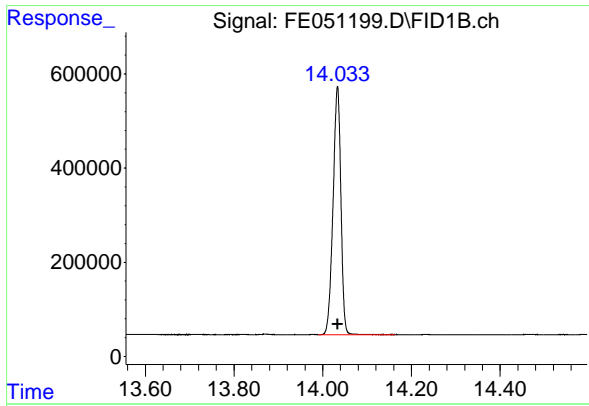
#11 n-Heneicosane (C21)

R.T.: 13.447 min
 Delta R.T.: -0.001 min
 Response: 6507424
 Conc: 48.69 ug/ml



#12 1-chlorooctadecane (SURR)

R.T.: 13.281 min
 Delta R.T.: -0.002 min
 Response: 4753004
 Conc: 41.87 ug/ml



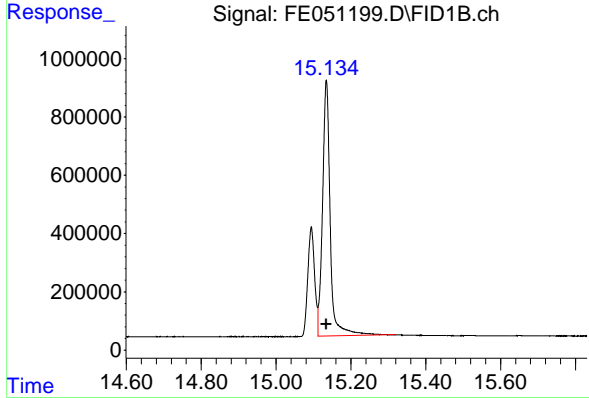
#13 n-Docosane (C22)

R.T.: 14.033 min
 Delta R.T.: 0.000 min
 Response: 6455884
 Conc: 48.56 ug/ml

Instrument : FID_E
 Client Sample Id : PB164942BS

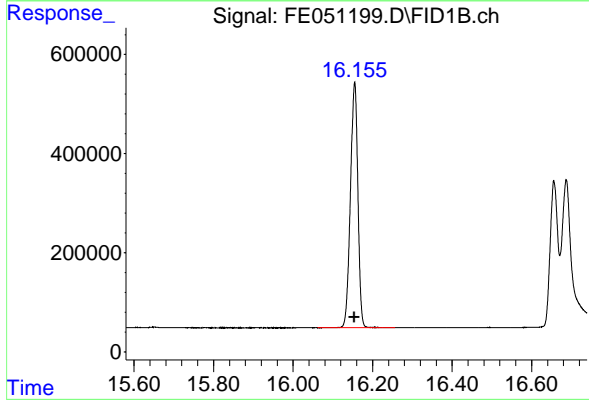
Manual Integrations
 APPROVED

Reviewed By :Yogesh Patel 11/14/2024
 Supervised By :Ankita Jodhani 11/14/2024



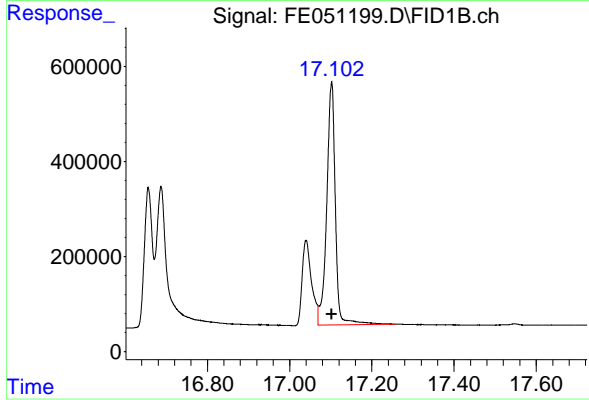
#14 n-Tetracosane (C24)

R.T.: 15.134 min
 Delta R.T.: 0.000 min
 Response: 12438288
 Conc: 93.76 ug/ml m



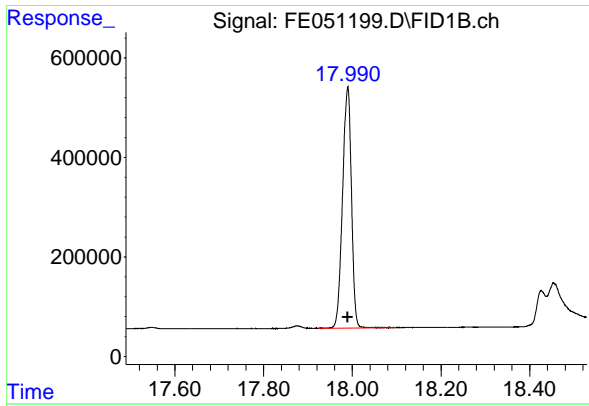
#15 n-Hexacosane (C26)

R.T.: 16.154 min
 Delta R.T.: 0.000 min
 Response: 6446330
 Conc: 48.15 ug/ml



#16 n-Octacosane (C28)

R.T.: 17.101 min
 Delta R.T.: 0.000 min
 Response: 7469588
 Conc: 54.79 ug/ml



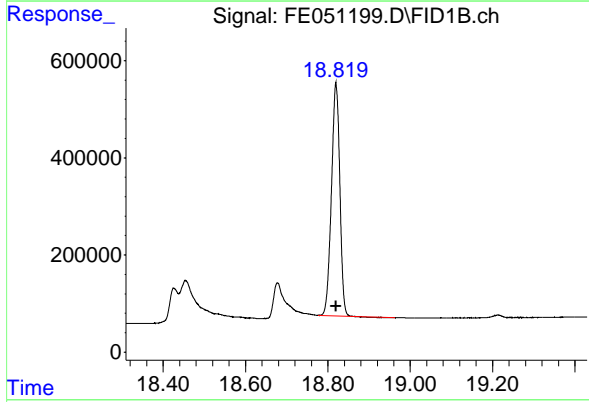
#17 n-Tricontane (C30)

R.T.: 17.989 min
Delta R.T.: 0.000 min
Response: 6758112
Conc: 46.52 ug/ml

Instrument :
FID_E
ClientSampleId :
PB164942BS

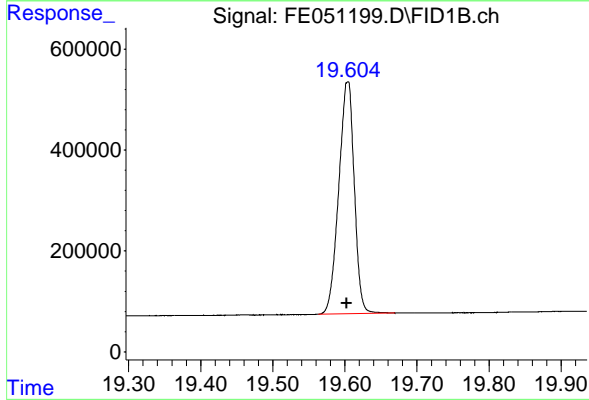
Manual Integrations
APPROVED

Reviewed By :Yogesh Patel 11/14/2024
Supervised By :Ankita Jodhani 11/14/2024



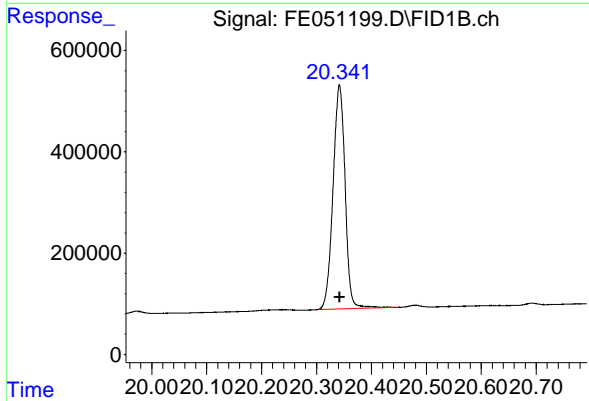
#18 n-Dotriacontane (C32)

R.T.: 18.819 min
Delta R.T.: 0.000 min
Response: 6750702
Conc: 45.46 ug/ml



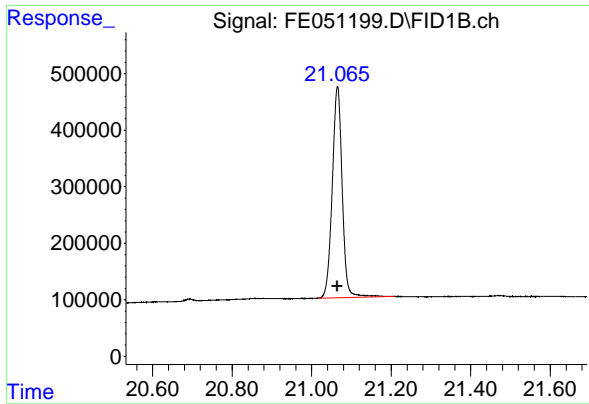
#19 n-Tetratriacontane (C34)

R.T.: 19.603 min
Delta R.T.: 0.000 min
Response: 6896547
Conc: 51.33 ug/ml



#20 n-Hexatriacontane (C36)

R.T.: 20.342 min
Delta R.T.: 0.000 min
Response: 6728155
Conc: 56.39 ug/ml



#21 n-Octatriacontane (C38)

R.T.: 21.065 min
 Delta R.T.: 0.000 min
 Response: 6476027
 Conc: 56.90 ug/ml

Instrument :

FID_E

ClientSampleId :

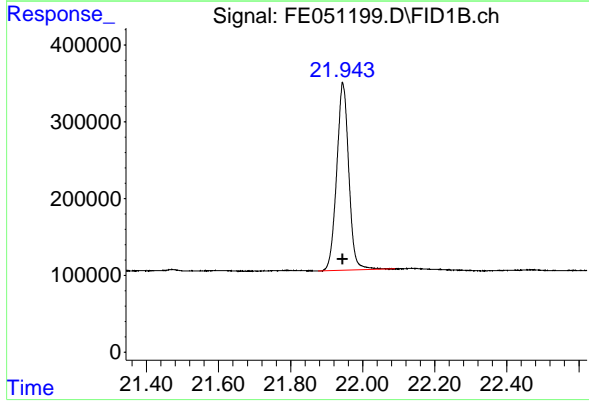
PB164942BS

Manual Integrations

APPROVED

Reviewed By :Yogesh Patel 11/14/2024

Supervised By :Ankita Jodhani 11/14/2024



#22 n-Tetracontane (C40)

R.T.: 21.945 min
 Delta R.T.: 0.000 min
 Response: 5695054
 Conc: 51.20 ug/ml