

Data Path : Z:\pestpcbsrv\HPCHEM1\FID\_E\Data\FE111424AL\  
 Data File : FE051240.D  
 Signal(s) : FID1B.ch  
 Acq On : 14 Nov 2024 17:47  
 Operator : YP\AJ  
 Sample : P4835-04  
 Misc :  
 ALS Vial : 14 Sample Multiplier: 1

**Instrument :**  
 FID\_E  
**ClientSampleId :**  
 345-2-STONE-E2

**Manual Integrations**  
**APPROVED**  
 Reviewed By :Yogesh Patel 11/15/2024  
 Supervised By :Ankita Jodhani 11/15/2024

Integration File: sample.E  
 Quant Time: Nov 15 04:12:52 2024  
 Quant Method : Z:\pestpcbsrv\HPCHEM1\FID\_E\methods\Aliphatic EPH 110724.M  
 Quant Title : GC Extractables  
 QLast Update : Thu Nov 07 04:56:04 2024  
 Response via : Initial Calibration  
 Integrator: ChemStation

Volume Inj. : 1 ul  
 Signal Phase : Rxi-1ms  
 Signal Info : 20M x 0.18mm x 0.18um

Compound	R.T.	Response	Conc Units
-----			
System Monitoring Compounds			
9) S ortho-Terphenyl (SURR)	11.850	6180132	41.175 ug/mlm
Spiked Amount	50.000	Recovery =	82.35%
12) S 1-chlorooctadecane (S...	13.291	4690760	41.317 ug/mlm
Spiked Amount	50.000	Recovery =	82.63%

Target Compounds

-----

(f)=RT Delta > 1/2 Window (m)=manual int.

Data Path : Z:\pestpcbsrv\HPCHEM1\FID\_E\Data\FE111424AL\  
 Data File : FE051240.D  
 Signal(s) : FID1B.ch  
 Acq On : 14 Nov 2024 17:47  
 Operator : YP\AJ  
 Sample : P4835-04  
 Misc :  
 ALS Vial : 14 Sample Multiplier: 1

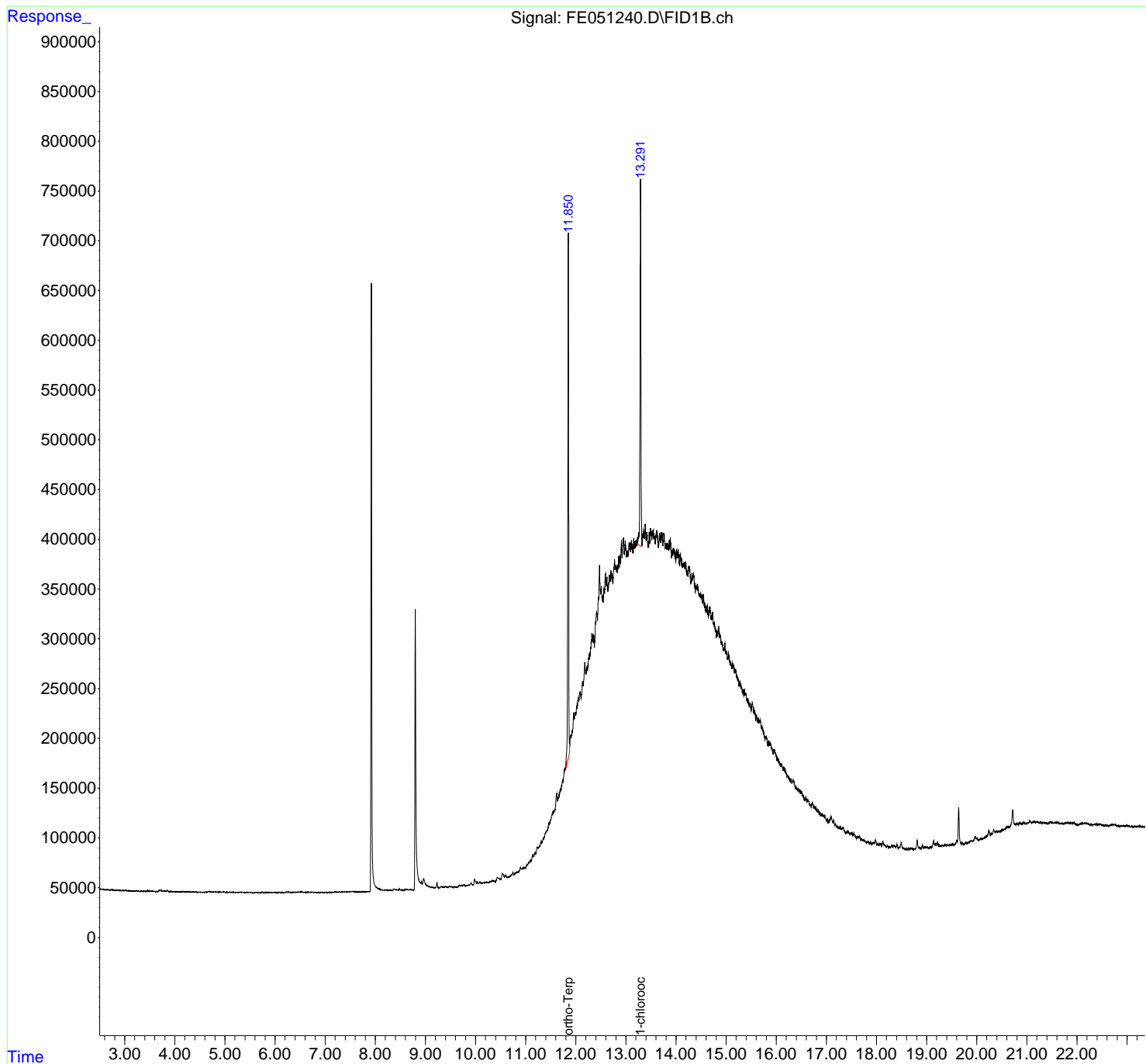
**Instrument :**  
 FID\_E  
**ClientSampleId :**  
 345-2-STONE-E2

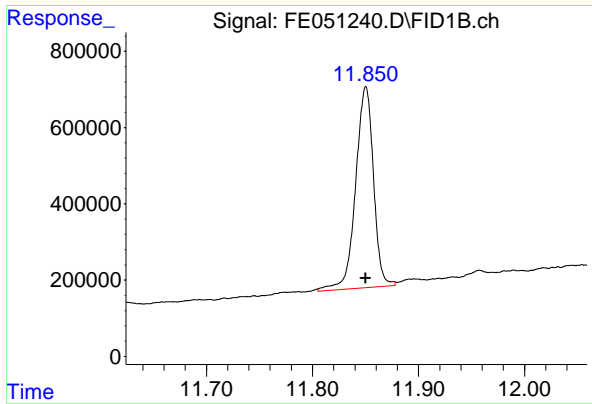
**Manual Integrations**  
**APPROVED**

Reviewed By :Yogesh Patel 11/15/2024  
 Supervised By :Ankita Jodhani 11/15/2024

Integration File: sample.E  
 Quant Time: Nov 15 04:12:52 2024  
 Quant Method : Z:\pestpcbsrv\HPCHEM1\FID\_E\methods\Aliphatic EPH 110724.  
 Quant Title : GC Extractables  
 QLast Update : Thu Nov 07 04:56:04 2024  
 Response via : Initial Calibration  
 Integrator: ChemStation

Volume Inj. : 1 ul  
 Signal Phase : Rxi-1ms  
 Signal Info : 20M x 0.18mm x 0.18um





#9 ortho-Terphenyl (SURR)

R.T.: 11.850 min  
 Delta R.T.: 0.000 min  
 Response: 6180132  
 Conc: 41.17 ug/ml

Instrument :

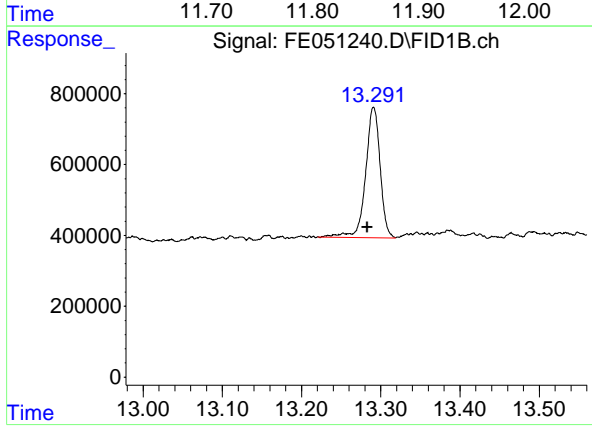
FID\_E

Client Sample Id :  
 345-2-STONE-E2

Manual Integrations

APPROVED

Reviewed By :Yogesh Patel 11/15/2024  
 Supervised By :Ankita Jodhani 11/15/2024



#12 1-chlorooctadecane (SURR)

R.T.: 13.291 min  
 Delta R.T.: 0.008 min  
 Response: 4690760  
 Conc: 41.32 ug/ml m