

Data Path : Z:\pestpcbsrv\HPCHEM1\FID_E\Data\FE111424AL\
 Data File : FE051243.D
 Signal(s) : FID1B.ch
 Acq On : 14 Nov 2024 19:17
 Operator : YP\AJ
 Sample : P4837-03
 Misc :
 ALS Vial : 17 Sample Multiplier: 1

Instrument :
 FID_E
ClientSampleId :
 3TRK-STONE

Integration File: sample.E
 Quant Time: Nov 15 04:13:41 2024
 Quant Method : Z:\pestpcbsrv\HPCHEM1\FID_E\methods\Aliphatic EPH 110724.M
 Quant Title : GC Extractables
 QLast Update : Thu Nov 07 04:56:04 2024
 Response via : Initial Calibration
 Integrator: ChemStation

Volume Inj. : 1 ul
 Signal Phase : Rxi-1ms
 Signal Info : 20M x 0.18mm x 0.18um

Compound	R.T.	Response	Conc Units

System Monitoring Compounds			
9) S ortho-Terphenyl (SURR)	11.847	5174224	34.473 ug/ml
Spiked Amount	50.000	Recovery =	68.95%
12) S 1-chlorooctadecane (S...	13.279	3892687	34.287 ug/ml
Spiked Amount	50.000	Recovery =	68.57%

Target Compounds

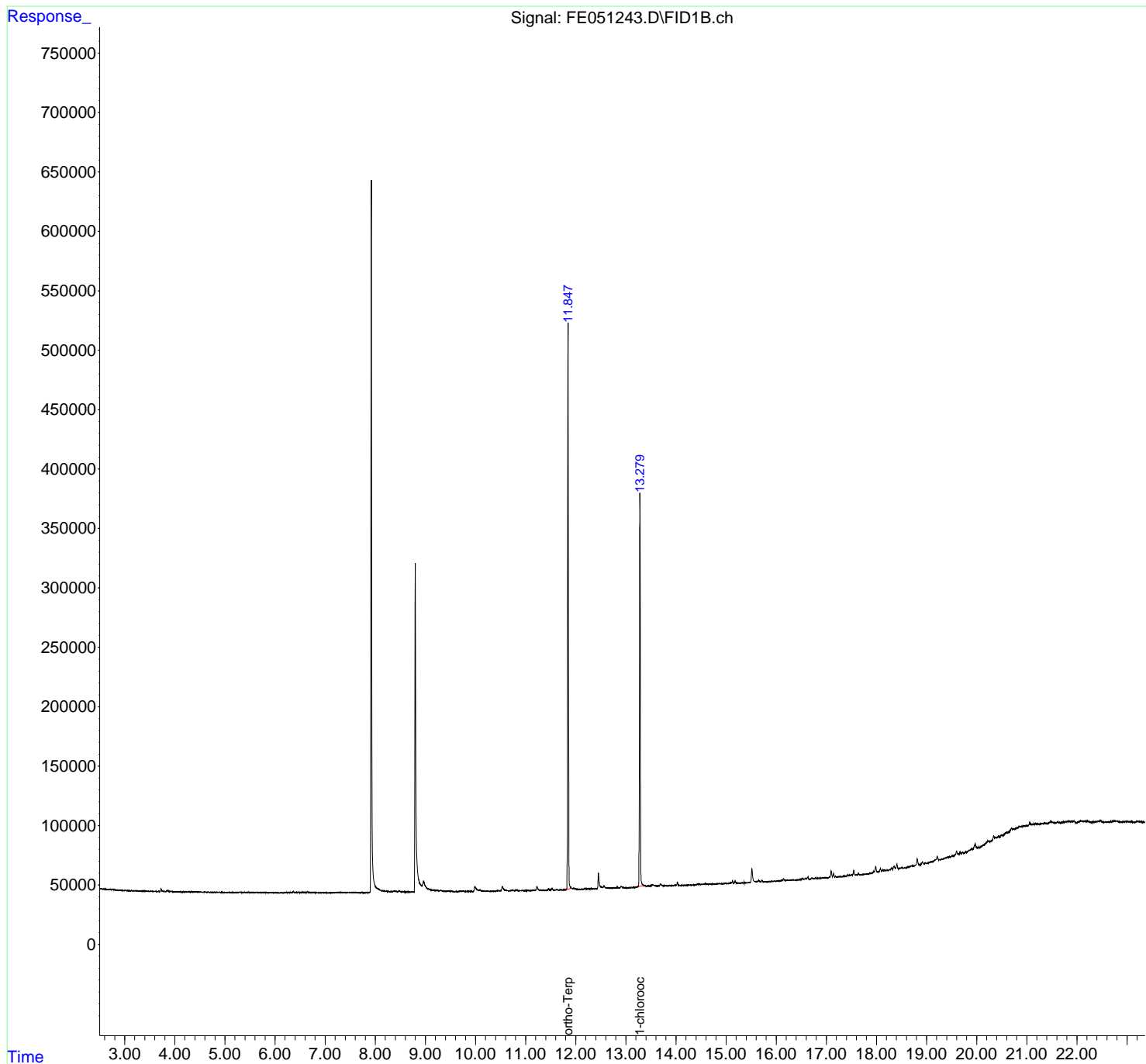
(f)=RT Delta > 1/2 Window (m)=manual int.

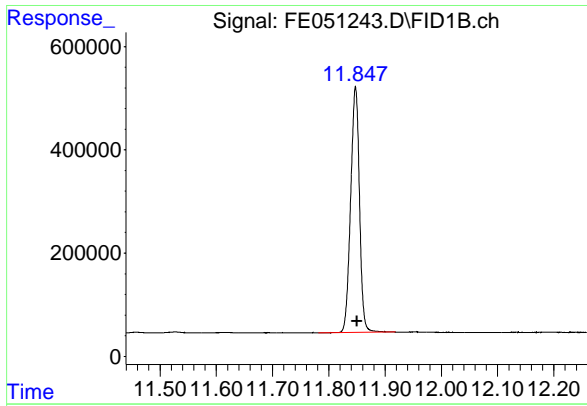
Data Path : Z:\pestpcbsrv\HPCHEM1\FID_E\Data\FE111424AL\
 Data File : FE051243.D
 Signal(s) : FID1B.ch
 Acq On : 14 Nov 2024 19:17
 Operator : YP\AJ
 Sample : P4837-03
 Misc :
 ALS Vial : 17 Sample Multiplier: 1

Instrument :
 FID_E
 ClientSampleId :
 3TRK-STONE

Integration File: sample.E
 Quant Time: Nov 15 04:13:41 2024
 Quant Method : Z:\pestpcbsrv\HPCHEM1\FID_E\methods\Aliphatic EPH 110724.M
 Quant Title : GC Extractables
 QLast Update : Thu Nov 07 04:56:04 2024
 Response via : Initial Calibration
 Integrator: ChemStation

Volume Inj. : 1 ul
 Signal Phase : Rxi-1ms
 Signal Info : 20M x 0.18mm x 0.18um

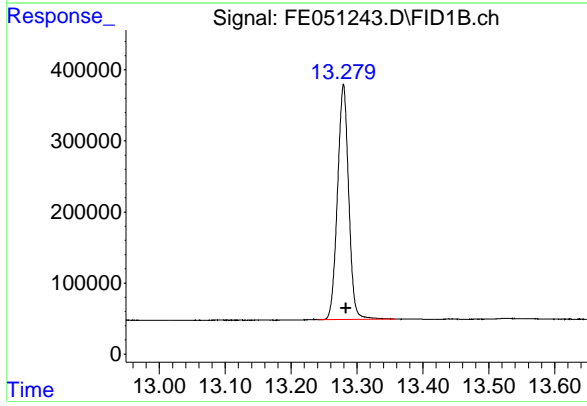




#9 ortho-Terphenyl (SURR)

R.T.: 11.847 min
Delta R.T.: -0.003 min
Response: 5174224
Conc: 34.47 ug/ml

Instrument :
FID_E
ClientSampleId :
3TRK-STONE



#12 1-chlorooctadecane (SURR)

R.T.: 13.279 min
Delta R.T.: -0.004 min
Response: 3892687
Conc: 34.29 ug/ml