

Data Path : Z:\pestpcbsrv\HPCHEM1\FID\_E\Data\FE111523AL\  
 Data File : FE045360.D  
 Signal(s) : FID1B.ch  
 Acq On : 15 Nov 2023 11:52  
 Operator : YP\AJ  
 Sample : 05385-03DL 2X  
 Misc :  
 ALS Vial : 16 Sample Multiplier: 1

Instrument :  
 FID\_E  
 ClientSampleId :

Integration File: autoint1.e  
 Quant Time: Nov 15 12:18:02 2023  
 Quant Method : Z:\pestpcbsrv\HPCHEM1\FID\_E\methods\Aliphatic EPH 110423.M  
 Quant Title : GC Extractables  
 QLast Update : Sat Nov 04 05:16:05 2023  
 Response via : Initial Calibration  
 Integrator: ChemStation

Volume Inj. : 1 ul  
 Signal Phase : Rxi-1ms  
 Signal Info : 20M x 0.18mm x 0.18um

Compound	R.T.	Response	Conc Units
-----			
System Monitoring Compounds			
9) S ortho-Terphenyl (SURR)	11.879	2400730	12.574 ug/ml
Spiked Amount	50.000	Recovery	= 25.15%
12) S 1-chlorooctadecane (S...	13.322	1804463	13.101 ug/ml
Spiked Amount	50.000	Recovery	= 26.20%
Target Compounds			
1) T n-Nonane (C9)	3.212f	37025	0.224 ug/ml
15) T n-Hexacosane (C26)	16.207	23246	0.159 ug/ml
16) T n-Octacosane (C28)	17.162	146857	1.005 ug/ml
17) T n-Tricontane (C30)	18.044	140805	0.927 ug/ml
18) T n-Dotriacontane (C32)	18.882	248811	1.593 ug/ml
19) T n-Tetratriacontane (C34)	19.685	113456	0.727 ug/ml
20) T n-Hexatriacontane (C36)	20.412	118009	0.727 ug/ml
22) T n-Tetracontane (C40)	22.072	39894	0.234 ug/ml
-----			

(f)=RT Delta > 1/2 Window

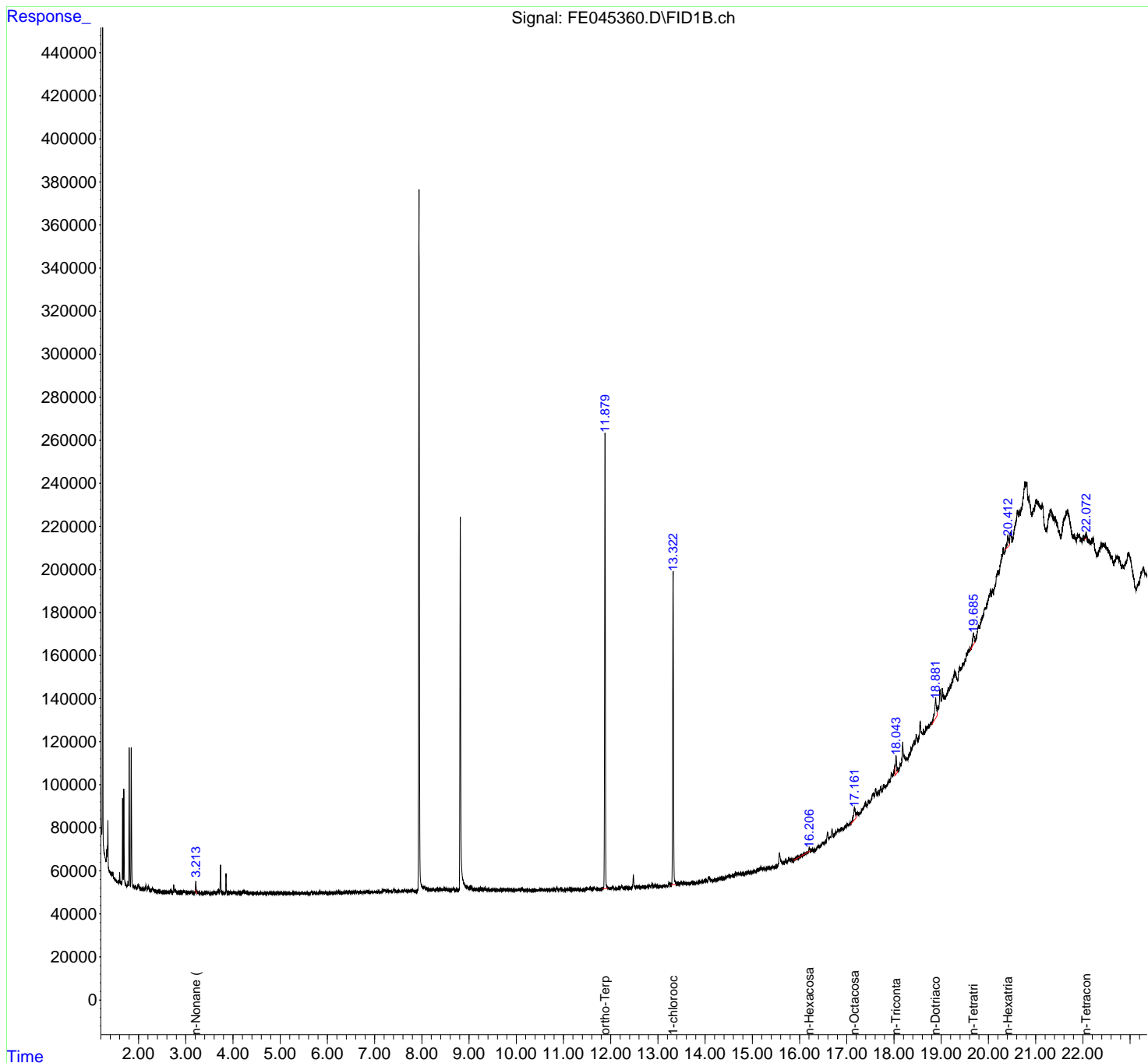
(m)=manual int.

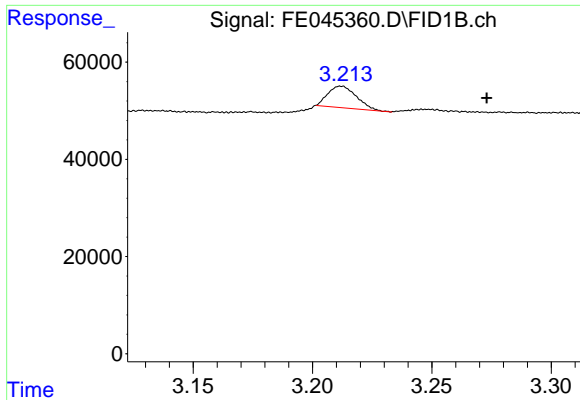
Data Path : Z:\pestpcbsrv\HPCHEM1\FID\_E\Data\FE111523AL\  
 Data File : FE045360.D  
 Signal(s) : FID1B.ch  
 Acq On : 15 Nov 2023 11:52  
 Operator : YP\AJ  
 Sample : 05385-03DL 2X  
 Misc :  
 ALS Vial : 16 Sample Multiplier: 1

Instrument :  
 FID\_E  
 ClientSampleId :

Integration File: autoint1.e  
 Quant Time: Nov 15 12:18:02 2023  
 Quant Method : Z:\pestpcbsrv\HPCHEM1\FID\_E\methods\Aliphatic EPH 110423.M  
 Quant Title : GC Extractables  
 QLast Update : Sat Nov 04 05:16:05 2023  
 Response via : Initial Calibration  
 Integrator: ChemStation

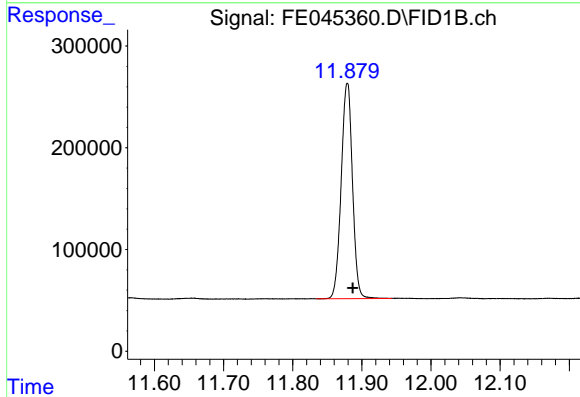
Volume Inj. : 1 ul  
 Signal Phase : Rxi-1ms  
 Signal Info : 20M x 0.18mm x 0.18um



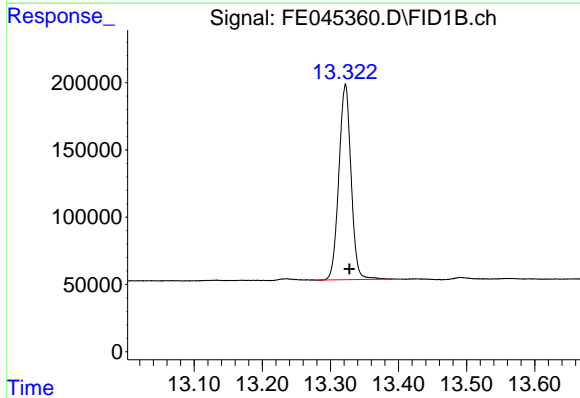


#1 n-Nonane (C9)  
 R.T.: 3.212 min  
 Delta R.T.: -0.061 min  
 Response: 37025  
 Conc: 0.22 ug/ml

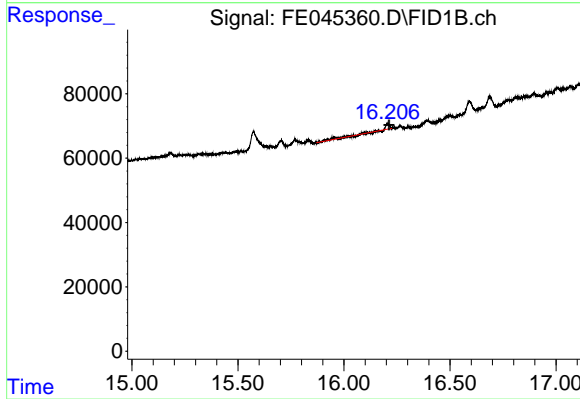
Instrument :  
 FID\_E  
 ClientSampleId :



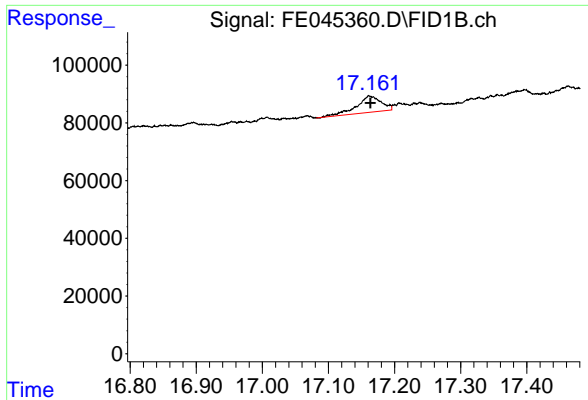
#9 ortho-Terphenyl (SURR)  
 R.T.: 11.879 min  
 Delta R.T.: -0.008 min  
 Response: 2400730  
 Conc: 12.57 ug/ml



#12 1-chlorooctadecane (SURR)  
 R.T.: 13.322 min  
 Delta R.T.: -0.006 min  
 Response: 1804463  
 Conc: 13.10 ug/ml

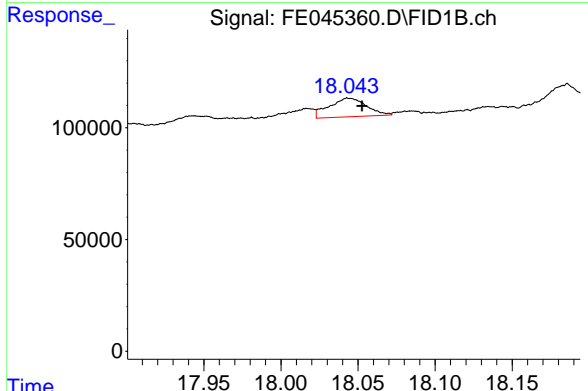


#15 n-Hexacosane (C26)  
 R.T.: 16.207 min  
 Delta R.T.: -0.005 min  
 Response: 23246  
 Conc: 0.16 ug/ml

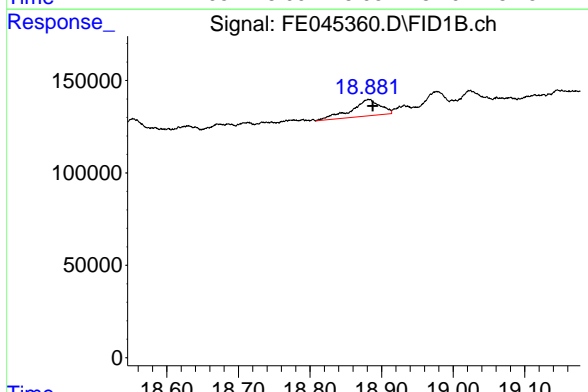


#16 n-Octacosane (C28)  
 R.T.: 17.162 min  
 Delta R.T.: -0.002 min  
 Response: 146857  
 Conc: 1.00 ug/ml

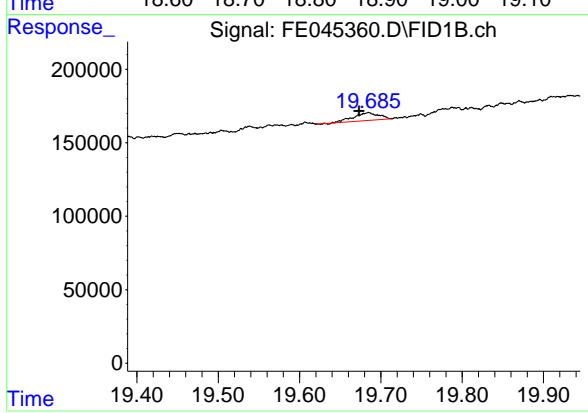
Instrument :  
 FID\_E  
 ClientSampleId :



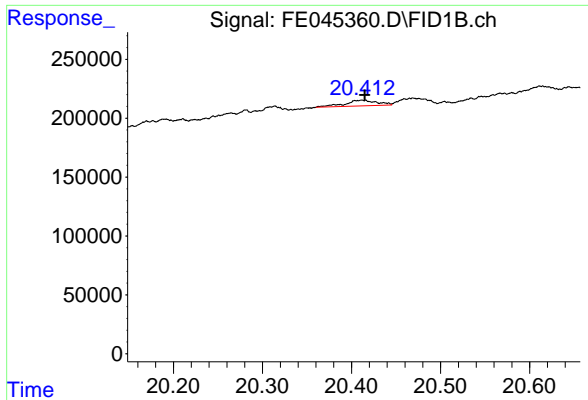
#17 n-Tricontane (C30)  
 R.T.: 18.044 min  
 Delta R.T.: -0.009 min  
 Response: 140805  
 Conc: 0.93 ug/ml



#18 n-Dotriacontane (C32)  
 R.T.: 18.882 min  
 Delta R.T.: -0.005 min  
 Response: 248811  
 Conc: 1.59 ug/ml



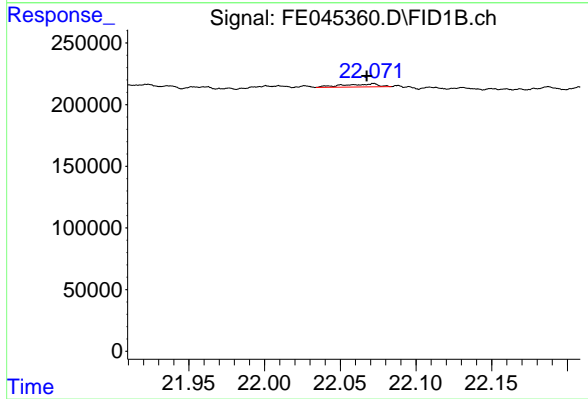
#19 n-Tetratriacontane (C34)  
 R.T.: 19.685 min  
 Delta R.T.: 0.012 min  
 Response: 113456  
 Conc: 0.73 ug/ml



#20 n-Hexatriacontane (C36)

R.T.: 20.412 min  
Delta R.T.: -0.003 min  
Response: 118009  
Conc: 0.73 ug/ml

Instrument :  
FID\_E  
ClientSampleId :



#22 n-Tetracontane (C40)

R.T.: 22.072 min  
Delta R.T.: 0.004 min  
Response: 39894  
Conc: 0.23 ug/ml