

Data Path : Z:\pestpcbsrv\HPCHEM1\FID\_E\Data\FE111824AL\  
 Data File : FE051326.D  
 Signal(s) : FID1B.ch  
 Acq On : 18 Nov 2024 22:53  
 Operator : YP\AJ  
 Sample : P4889-05  
 Misc :  
 ALS Vial : 26 Sample Multiplier: 1

Instrument :  
 FID\_E  
 ClientSampleId :  
 #72-11930

Integration File: autoint1.e  
 Quant Time: Nov 19 02:51:52 2024  
 Quant Method : Z:\pestpcbsrv\HPCHEM1\FID\_E\methods\Aliphatic EPH 110724.M  
 Quant Title : GC Extractables  
 QLast Update : Thu Nov 07 04:56:04 2024  
 Response via : Initial Calibration  
 Integrator: ChemStation

Volume Inj. : 1 ul  
 Signal Phase : Rxi-1ms  
 Signal Info : 20M x 0.18mm x 0.18um

Compound	R.T.	Response	Conc Units
System Monitoring Compounds			
9) S ortho-Terphenyl (SURR)	11.848	5052211	33.660 ug/ml
Spiked Amount	50.000	Recovery	= 67.32%
12) S 1-chlorooctadecane (S...	13.282	4266629	37.581 ug/ml
Spiked Amount	50.000	Recovery	= 75.16%

Target Compounds

(f)=RT Delta > 1/2 Window

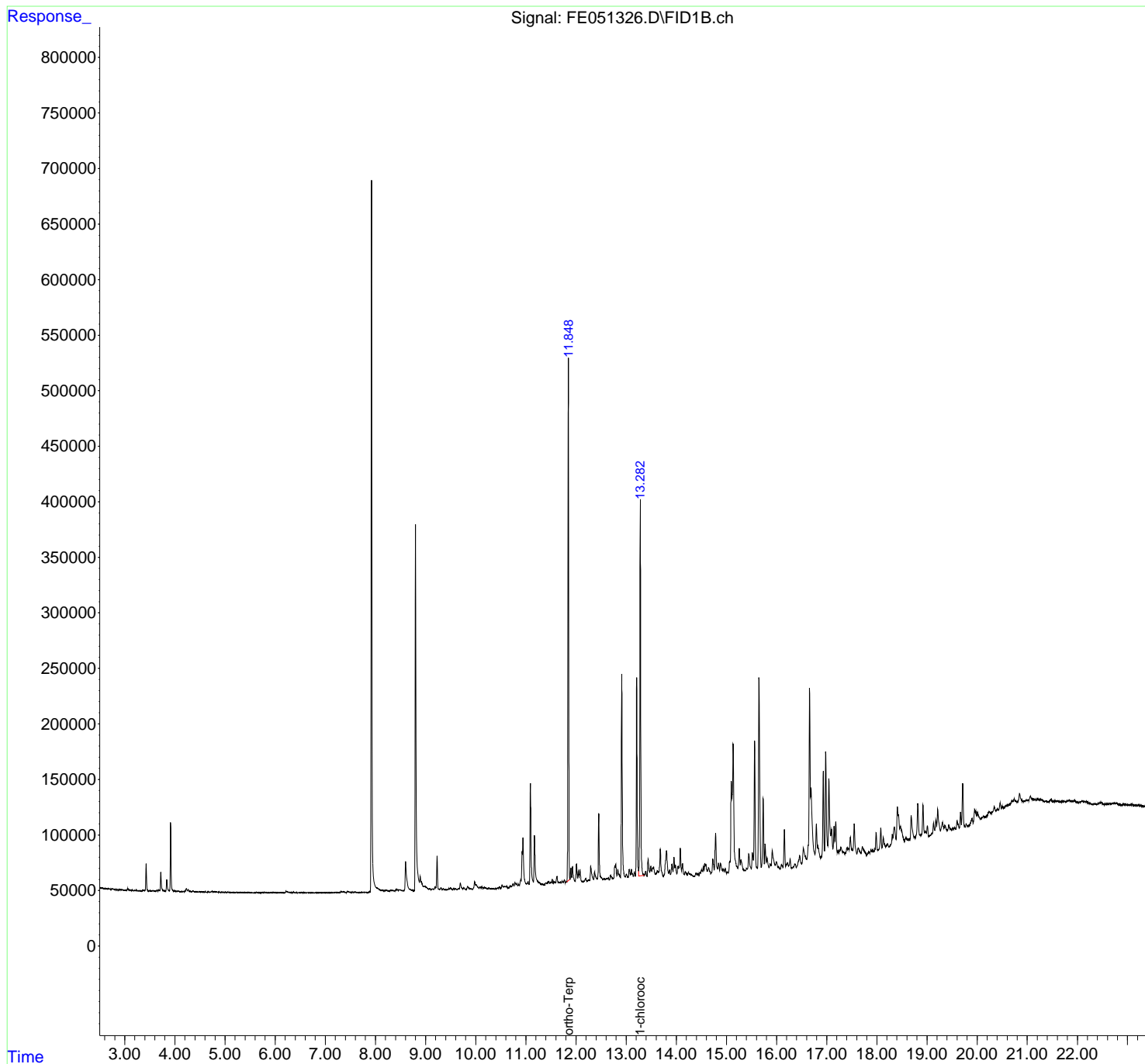
(m)=manual int.

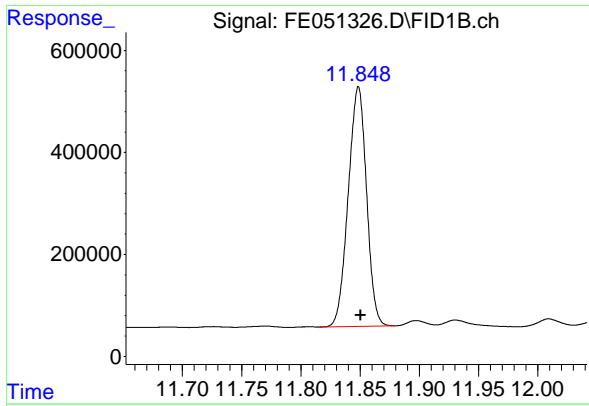
Data Path : Z:\pestpcbsrv\HPCHEM1\FID\_E\Data\FE111824AL\  
 Data File : FE051326.D  
 Signal(s) : FID1B.ch  
 Acq On : 18 Nov 2024 22:53  
 Operator : YP\AJ  
 Sample : P4889-05  
 Misc :  
 ALS Vial : 26 Sample Multiplier: 1

Instrument :  
 FID\_E  
 ClientSampleId :  
 #72-11930

Integration File: autoint1.e  
 Quant Time: Nov 19 02:51:52 2024  
 Quant Method : Z:\pestpcbsrv\HPCHEM1\FID\_E\methods\Aliphatic EPH 110724.M  
 Quant Title : GC Extractables  
 QLast Update : Thu Nov 07 04:56:04 2024  
 Response via : Initial Calibration  
 Integrator: ChemStation

Volume Inj. : 1 ul  
 Signal Phase : Rxi-1ms  
 Signal Info : 20M x 0.18mm x 0.18um

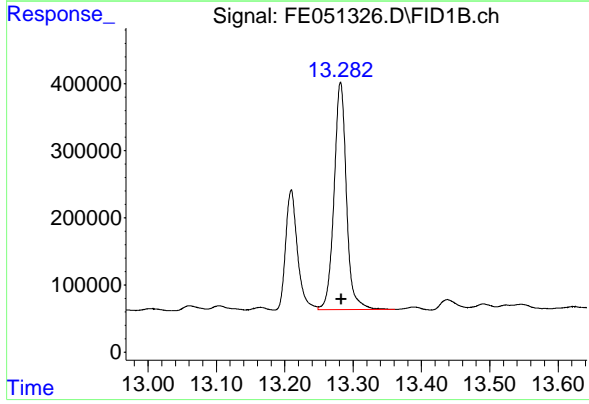




#9 ortho-Terphenyl (SURR)

R.T.: 11.848 min  
Delta R.T.: -0.002 min  
Response: 5052211  
Conc: 33.66 ug/ml

Instrument :  
FID\_E  
ClientSampleId :  
#72-11930



#12 1-chlorooctadecane (SURR)

R.T.: 13.282 min  
Delta R.T.: -0.001 min  
Response: 4266629  
Conc: 37.58 ug/ml