

Data Path : Z:\pestpcbsrv\HPCHEM1\FID_E\Data\FE112123AL\
 Data File : FE045473.D
 Signal(s) : FID1B.ch
 Acq On : 21 Nov 2023 15:22
 Operator : YP\AJ
 Sample : 05492-02
 Misc :
 ALS Vial : 20 Sample Multiplier: 1

Instrument :
 FID_E
 ClientSampleId :
 TP-13-EPH

Integration File: autoint1.e
 Quant Time: Nov 21 22:52:04 2023
 Quant Method : Z:\pestpcbsrv\HPCHEM1\FID_E\methods\Aliphatic EPH 110423.M
 Quant Title : GC Extractables
 QLast Update : Sat Nov 04 05:16:05 2023
 Response via : Initial Calibration
 Integrator: ChemStation

Volume Inj. : 1 ul
 Signal Phase : Rxi-1ms
 Signal Info : 20M x 0.18mm x 0.18um

Compound	R.T.	Response	Conc Units

System Monitoring Compounds			
9) S ortho-Terphenyl (SURR)	11.874	8914871	46.692 ug/ml
Spiked Amount	50.000	Recovery	= 93.38%
12) S 1-chlorooctadecane (S...	13.315	6596452	47.891 ug/ml
Spiked Amount	50.000	Recovery	= 95.78%

Target Compounds

(f)=RT Delta > 1/2 Window

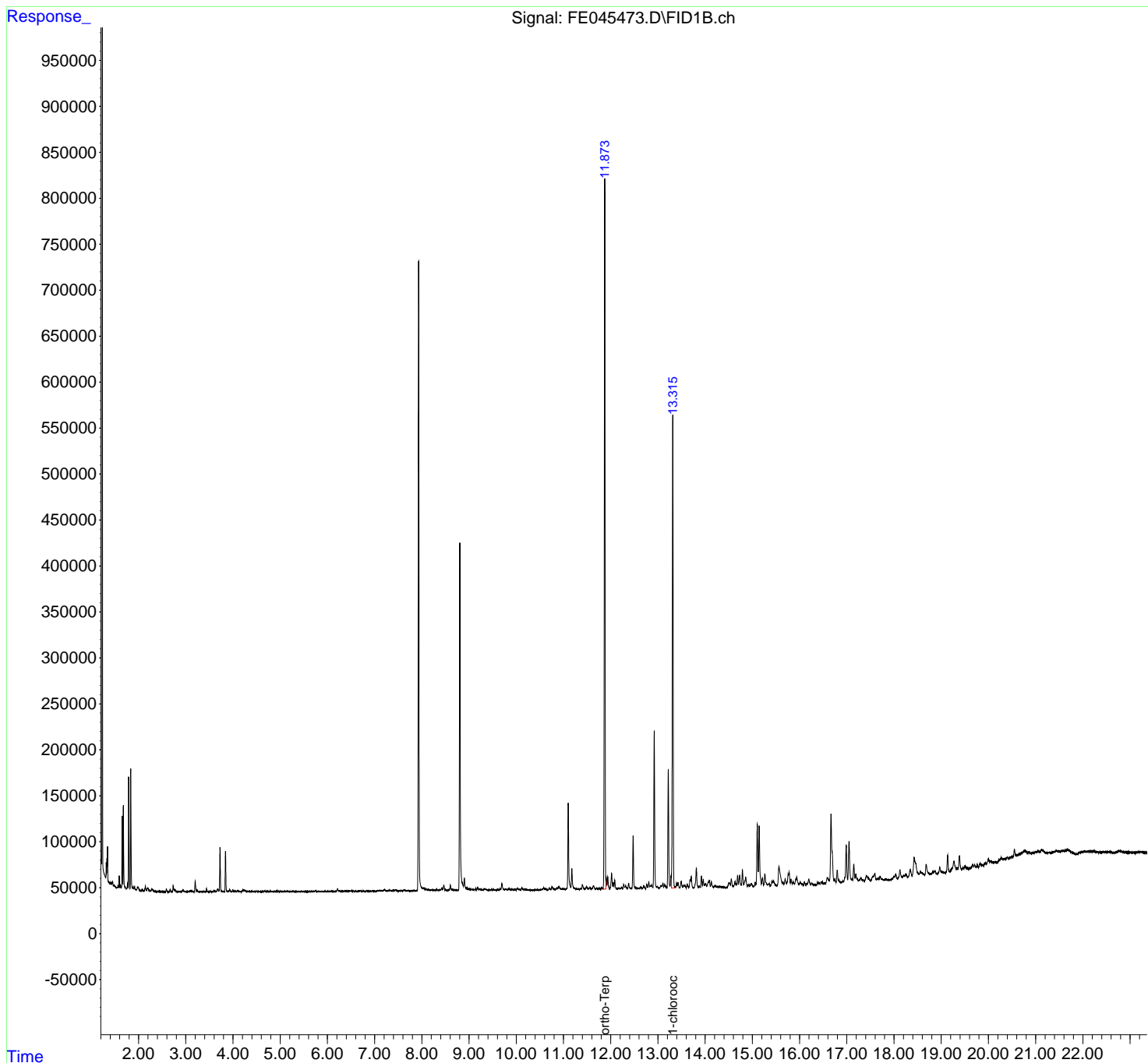
(m)=manual int.

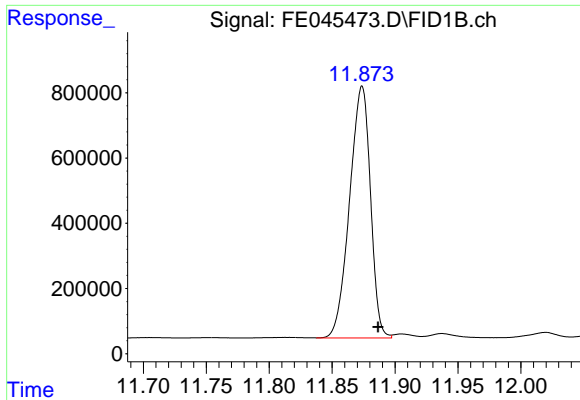
Data Path : Z:\pestpcbsrv\HPCHEM1\FID_E\Data\FE112123AL\
 Data File : FE045473.D
 Signal(s) : FID1B.ch
 Acq On : 21 Nov 2023 15:22
 Operator : YP\AJ
 Sample : 05492-02
 Misc :
 ALS Vial : 20 Sample Multiplier: 1

Instrument :
 FID_E
 ClientSampleId :
 TP-13-EPH

Integration File: autoint1.e
 Quant Time: Nov 21 22:52:04 2023
 Quant Method : Z:\pestpcbsrv\HPCHEM1\FID_E\methods\Aliphatic EPH 110423.M
 Quant Title : GC Extractables
 QLast Update : Sat Nov 04 05:16:05 2023
 Response via : Initial Calibration
 Integrator: ChemStation

Volume Inj. : 1 ul
 Signal Phase : Rxi-1ms
 Signal Info : 20M x 0.18mm x 0.18um

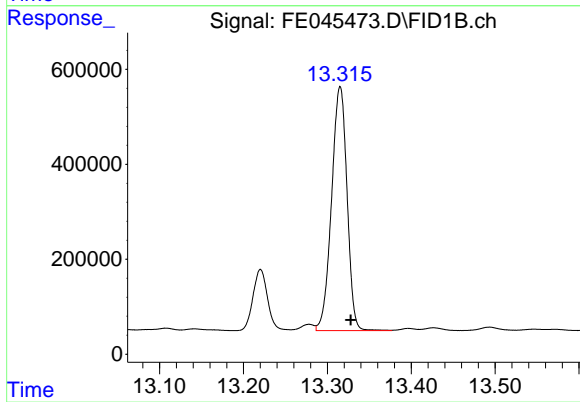




#9 ortho-Terphenyl (SURR)

R.T.: 11.874 min
Delta R.T.: -0.013 min
Response: 8914871
Conc: 46.69 ug/ml

Instrument :
FID_E
ClientSampleId :
TP-13-EPH



#12 1-chlorooctadecane (SURR)

R.T.: 13.315 min
Delta R.T.: -0.013 min
Response: 6596452
Conc: 47.89 ug/ml