

Data Path : Z:\pestpcbsrv\HPCHEM1\FID_E\Data\FE112125AL\
 Data File : FE056993.D
 Signal(s) : FID1B.ch
 Acq On : 21 Nov 2025 21:35
 Operator : YP\AJ
 Sample : I.BLK
 Misc :
 ALS Vial : 1 Sample Multiplier: 1

Instrument :
 FID_E
 ClientSampleId :

Integration File: autoint1.e
 Quant Time: Nov 21 22:18:53 2025
 Quant Method : Z:\pestpcbsrv\HPCHEM1\FID_E\methods\Aliphatic EPH 103025.M
 Quant Title : GC Extractables
 QLast Update : Tue Nov 18 13:37:28 2025
 Response via : Initial Calibration
 Integrator: ChemStation

Volume Inj. : 1 ul
 Signal Phase : Rxi-1ms
 Signal Info : 20M x 0.18mm x 0.18um

Compound	R.T.	Response	Conc Units

System Monitoring Compounds			
Target Compounds			
18) T n-Dotriacontane (C32)	18.941	93255	0.474 ug/ml
19) T n-Tetraatriacontane (C34)	19.726	116784	0.677 ug/ml
20) T n-Hexatriacontane (C36)	20.469	222735	1.540 ug/ml

(f)=RT Delta > 1/2 Window

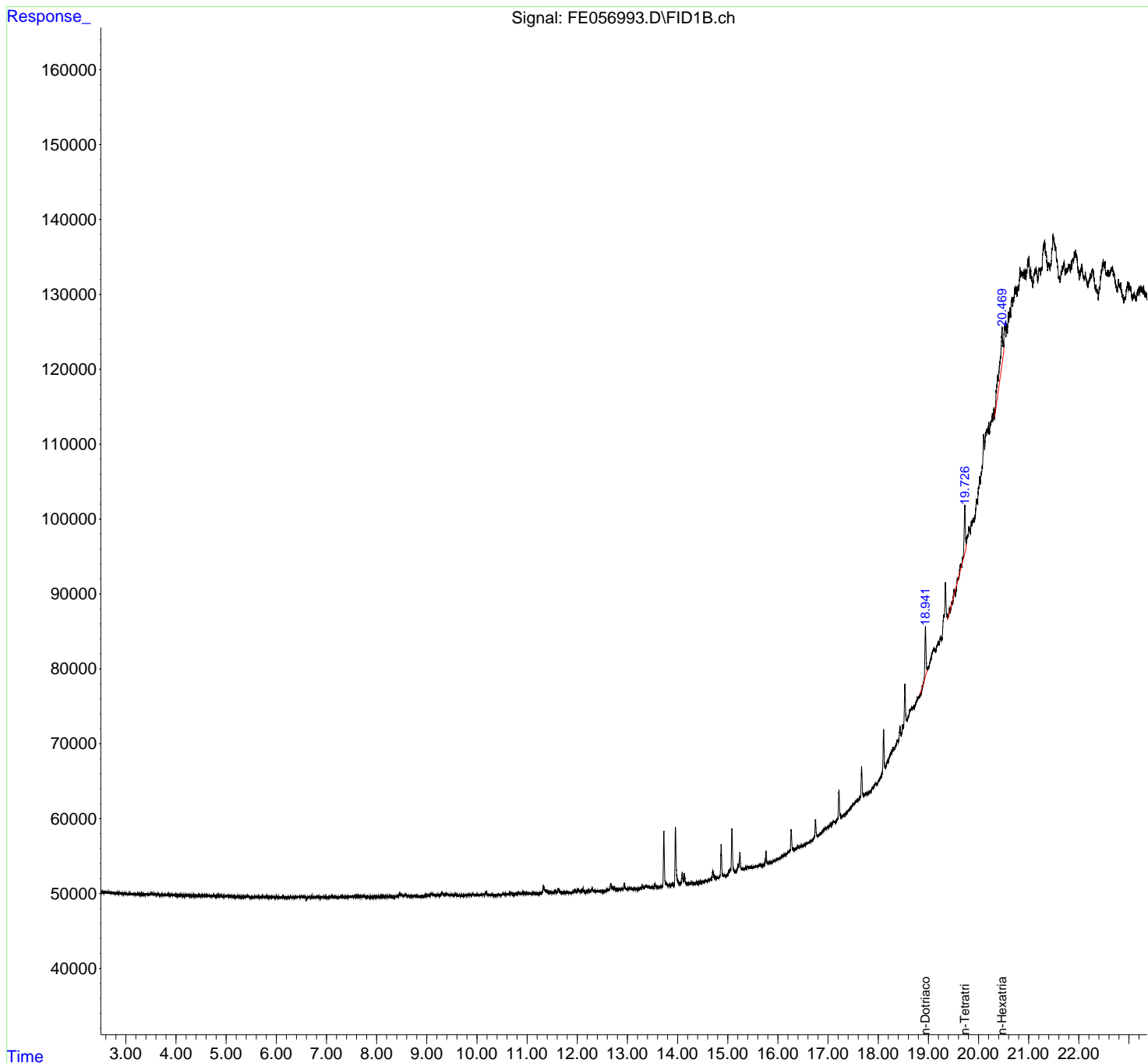
(m)=manual int.

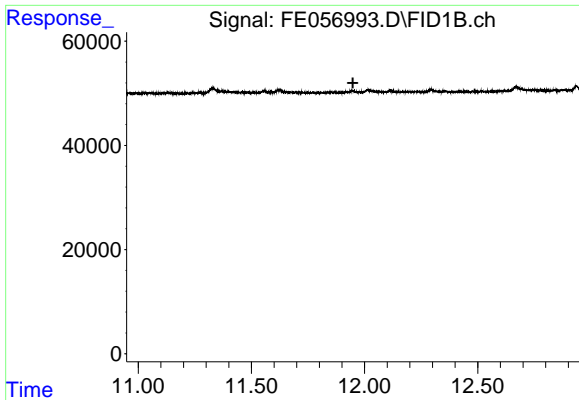
Data Path : Z:\pestpcbsrv\HPCHEM1\FID_E\Data\FE112125AL\
 Data File : FE056993.D
 Signal(s) : FID1B.ch
 Acq On : 21 Nov 2025 21:35
 Operator : YP\AJ
 Sample : I.BLK
 Misc :
 ALS Vial : 1 Sample Multiplier: 1

Instrument :
 FID_E
 ClientSampleId :

Integration File: autoint1.e
 Quant Time: Nov 21 22:18:53 2025
 Quant Method : Z:\pestpcbsrv\HPCHEM1\FID_E\methods\Aliphatic EPH 103025.M
 Quant Title : GC Extractables
 QLast Update : Tue Nov 18 13:37:28 2025
 Response via : Initial Calibration
 Integrator: ChemStation

Volume Inj. : 1 ul
 Signal Phase : Rxi-1ms
 Signal Info : 20M x 0.18mm x 0.18um

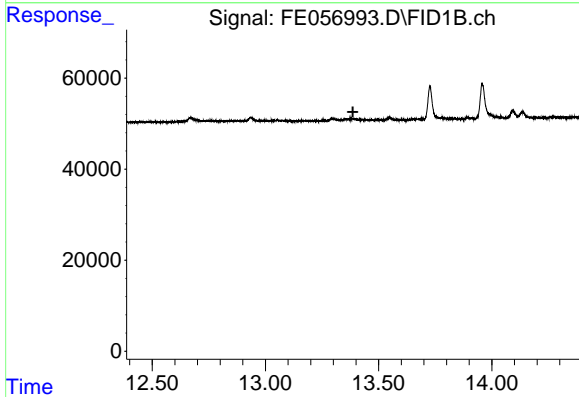




#9 ortho-Terphenyl (SURR)

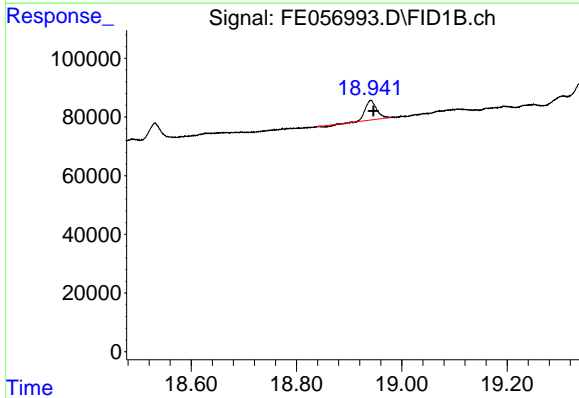
R.T.: 0.000 min
 Exp R.T.: 11.949 min
 Response: 0
 Conc: N.D.

Instrument :
 FID_E
 ClientSampleId :



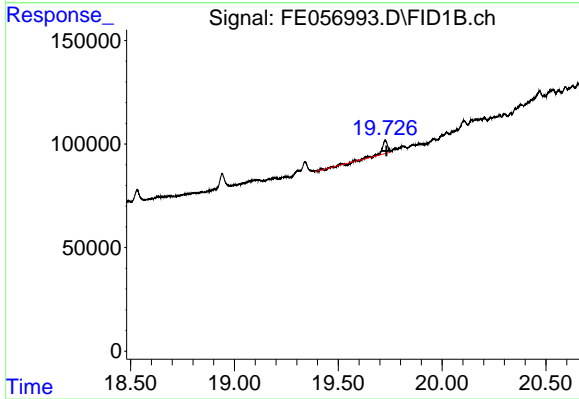
#12 1-chlorooctadecane (SURR)

R.T.: 0.000 min
 Exp R.T.: 13.386 min
 Response: 0
 Conc: N.D.



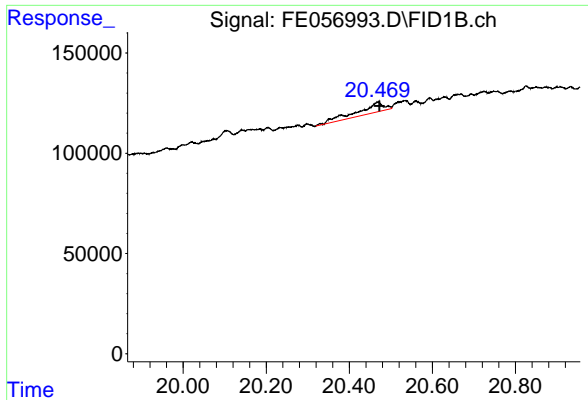
#18 n-Dotriacontane (C32)

R.T.: 18.941 min
 Delta R.T.: -0.005 min
 Response: 93255
 Conc: 0.47 ug/ml



#19 n-Tetratriacontane (C34)

R.T.: 19.726 min
 Delta R.T.: -0.005 min
 Response: 116784
 Conc: 0.68 ug/ml



#20 n-Hexatriacontane (C36)

R.T.: 20.469 min
Delta R.T.: -0.004 min
Response: 222735
Conc: 1.54 ug/ml

Instrument :
FID_E
ClientSampleId :