

Data Path : Z:\pestpcbsrv\HPCHEM1\FID_E\Data\FE12223AL\
 Data File : FE045493.D
 Signal(s) : FID1B.ch
 Acq On : 22 Nov 2023 08:38
 Operator : YP\AJ
 Sample : 05307-02DL 10X
 Misc :
 ALS Vial : 12 Sample Multiplier: 1

Instrument :
 FID_E
 ClientSampleId :

Integration File: autoint1.e
 Quant Time: Nov 22 22:45:21 2023
 Quant Method : Z:\pestpcbsrv\HPCHEM1\FID_E\methods\Aliphatic EPH 110423.M
 Quant Title : GC Extractables
 QLast Update : Sat Nov 04 05:16:05 2023
 Response via : Initial Calibration
 Integrator: ChemStation

Volume Inj. : 1 ul
 Signal Phase : Rxi-1ms
 Signal Info : 20M x 0.18mm x 0.18um

Compound	R.T.	Response	Conc Units

System Monitoring Compounds			
9) S ortho-Terphenyl (SURR)	11.870	428611	2.245 ug/ml
Spiked Amount	50.000	Recovery =	4.49%
12) S 1-chlorooctadecane (S...	13.314	353504	2.566 ug/ml
Spiked Amount	50.000	Recovery =	5.13%
Target Compounds			
10) T n-Eicosane (C20)	12.925	184516	1.165 ug/ml
11) T n-Heneicosane (C21)	13.547	68875	0.448 ug/ml
14) T n-Tetracosane (C24)	15.151	108597	0.733 ug/ml
15) T n-Hexacosane (C26)	16.199	58447	0.401 ug/ml
16) T n-Octacosane (C28)	17.154	85969	0.588 ug/ml
17) T n-Tricontane (C30)	18.040	130973	0.862 ug/ml
18) T n-Dotriacontane (C32)	18.876	169910	1.088 ug/ml
19) T n-Tetratriacontane (C34)	19.668	139885	0.896 ug/ml
20) T n-Hexatriacontane (C36)	20.404	43981	0.271 ug/ml
22) T n-Tetracontane (C40)	22.042	351539	2.058 ug/ml

(f)=RT Delta > 1/2 Window

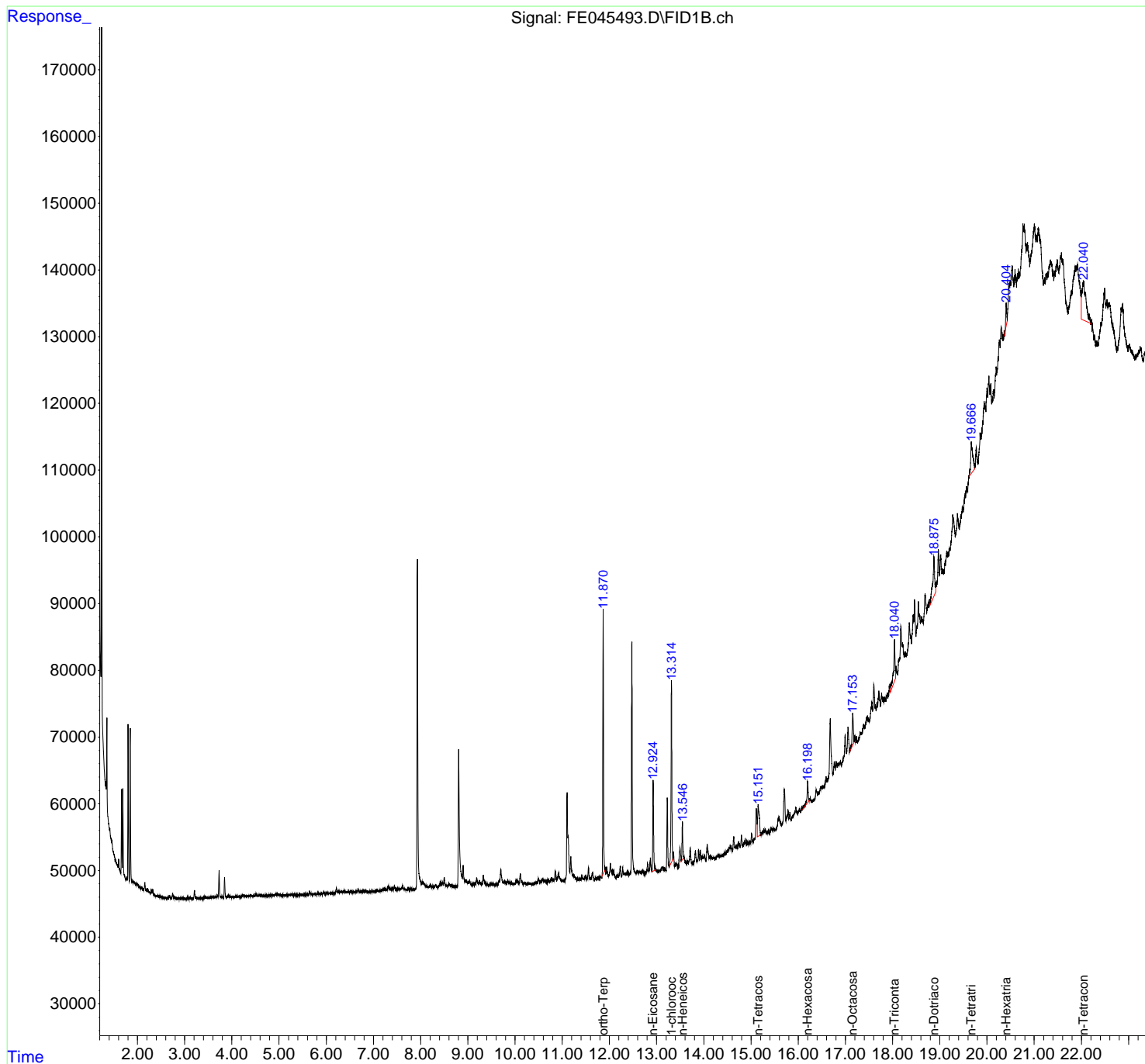
(m)=manual int.

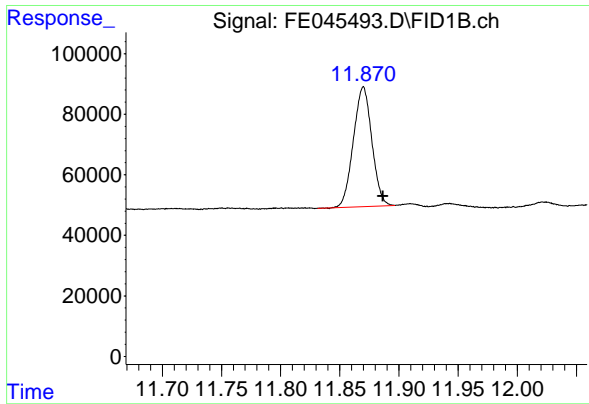
Data Path : Z:\pestpcbsrv\HPCHEM1\FID_E\Data\FE122223AL\
 Data File : FE045493.D
 Signal(s) : FID1B.ch
 Acq On : 22 Nov 2023 08:38
 Operator : YP\AJ
 Sample : 05307-02DL 10X
 Misc :
 ALS Vial : 12 Sample Multiplier: 1

Instrument :
 FID_E
 ClientSampleId :

Integration File: autoint1.e
 Quant Time: Nov 22 22:45:21 2023
 Quant Method : Z:\pestpcbsrv\HPCHEM1\FID_E\methods\Aliphatic EPH 110423.M
 Quant Title : GC Extractables
 QLast Update : Sat Nov 04 05:16:05 2023
 Response via : Initial Calibration
 Integrator: ChemStation

Volume Inj. : 1 ul
 Signal Phase : Rxi-1ms
 Signal Info : 20M x 0.18mm x 0.18um

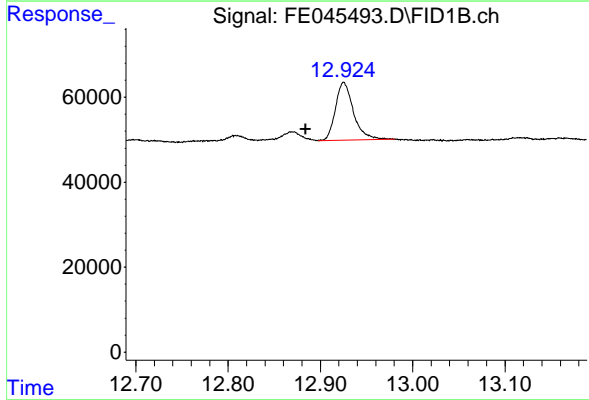




#9 ortho-Terphenyl (SURR)

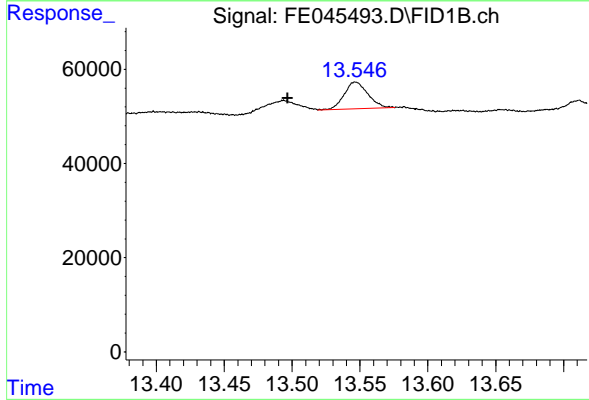
R.T.: 11.870 min
 Delta R.T.: -0.017 min
 Response: 428611
 Conc: 2.24 ug/ml

Instrument :
 FID_E
 ClientSampleId :



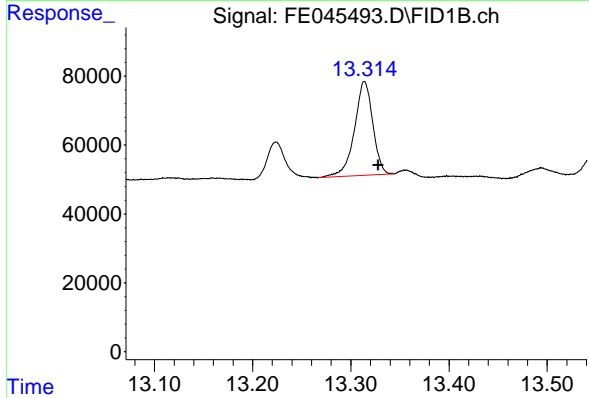
#10 n-Eicosane (C20)

R.T.: 12.925 min
 Delta R.T.: 0.041 min
 Response: 184516
 Conc: 1.16 ug/ml



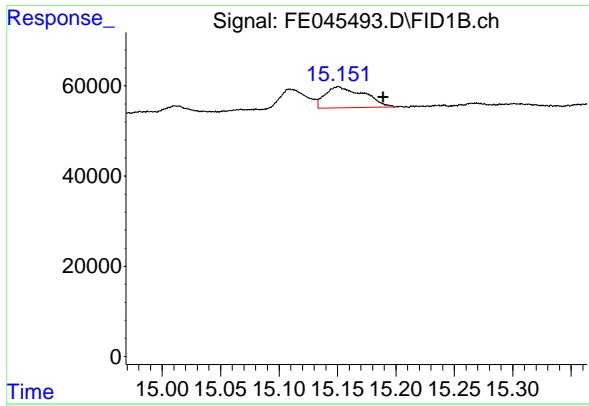
#11 n-Heneicosane (C21)

R.T.: 13.547 min
 Delta R.T.: 0.050 min
 Response: 68875
 Conc: 0.45 ug/ml



#12 1-chlorooctadecane (SURR)

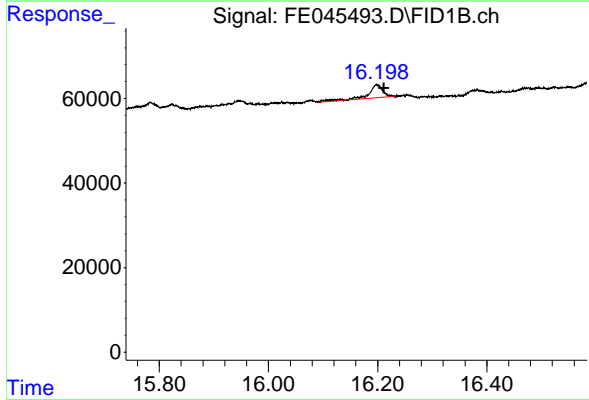
R.T.: 13.314 min
 Delta R.T.: -0.014 min
 Response: 353504
 Conc: 2.57 ug/ml



#14 n-Tetracosane (C24)

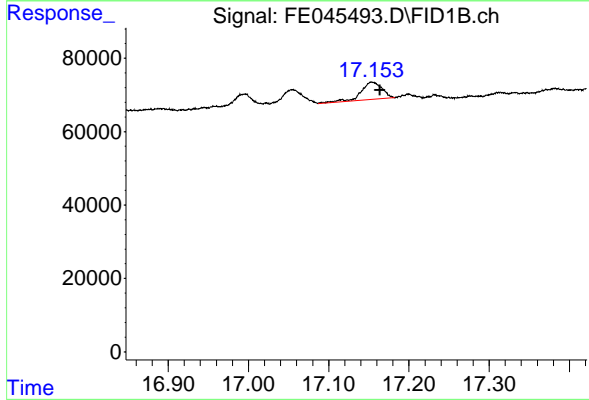
R.T.: 15.151 min
Delta R.T.: -0.038 min
Response: 108597
Conc: 0.73 ug/ml

Instrument :
FID_E
ClientSampleId :



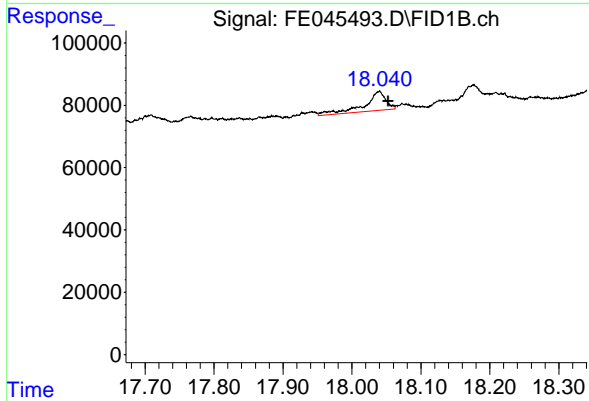
#15 n-Hexacosane (C26)

R.T.: 16.199 min
Delta R.T.: -0.013 min
Response: 58447
Conc: 0.40 ug/ml



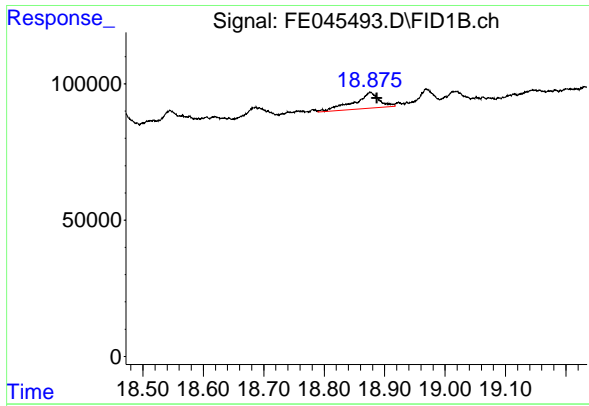
#16 n-Octacosane (C28)

R.T.: 17.154 min
Delta R.T.: -0.010 min
Response: 85969
Conc: 0.59 ug/ml



#17 n-Tricontane (C30)

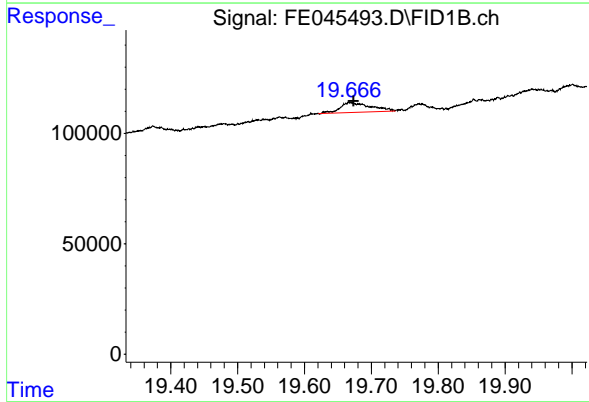
R.T.: 18.040 min
Delta R.T.: -0.013 min
Response: 130973
Conc: 0.86 ug/ml



#18 n-Dotriacontane (C32)

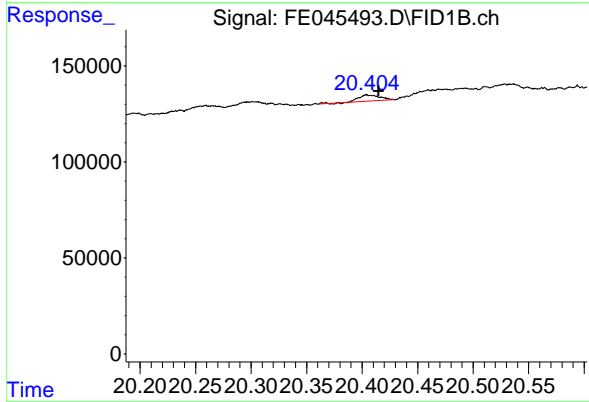
R.T.: 18.876 min
 Delta R.T.: -0.011 min
 Response: 169910
 Conc: 1.09 ug/ml

Instrument :
 FID_E
 ClientSampleId :



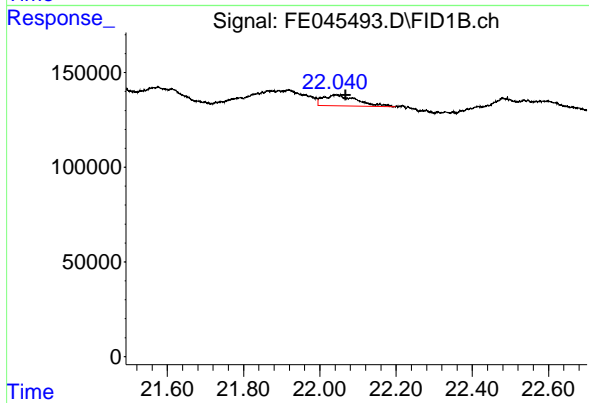
#19 n-Tetracontane (C34)

R.T.: 19.668 min
 Delta R.T.: -0.006 min
 Response: 139885
 Conc: 0.90 ug/ml



#20 n-Hexatriacontane (C36)

R.T.: 20.404 min
 Delta R.T.: -0.011 min
 Response: 43981
 Conc: 0.27 ug/ml



#22 n-Tetracontane (C40)

R.T.: 22.042 min
 Delta R.T.: -0.026 min
 Response: 351539
 Conc: 2.06 ug/ml