

Data Path : Z:\pestpcbsrv\HPCHEM1\FID_E\Data\FE112524AL\
 Data File : FE051428.D
 Signal(s) : FID1B.ch
 Acq On : 25 Nov 2024 10:44
 Operator : YP\AJ
 Sample : P4949-03DL 5X
 Misc :
 ALS Vial : 13 Sample Multiplier: 1

Instrument :
 FID_E
ClientSampleId :
 CONTAINMENT-STONEDL

Integration File: autoint1.e
 Quant Time: Nov 25 11:07:14 2024
 Quant Method : Z:\pestpcbsrv\HPCHEM1\FID_E\methods\Aliphatic EPH 110724.M
 Quant Title : GC Extractables
 QLast Update : Thu Nov 07 04:56:04 2024
 Response via : Initial Calibration
 Integrator: ChemStation

Volume Inj. : 1 ul
 Signal Phase : Rxi-1ms
 Signal Info : 20M x 0.18mm x 0.18um

Compound	R.T.	Response	Conc Units
----------	------	----------	------------

 System Monitoring Compounds

Target Compounds

(f)=RT Delta > 1/2 Window

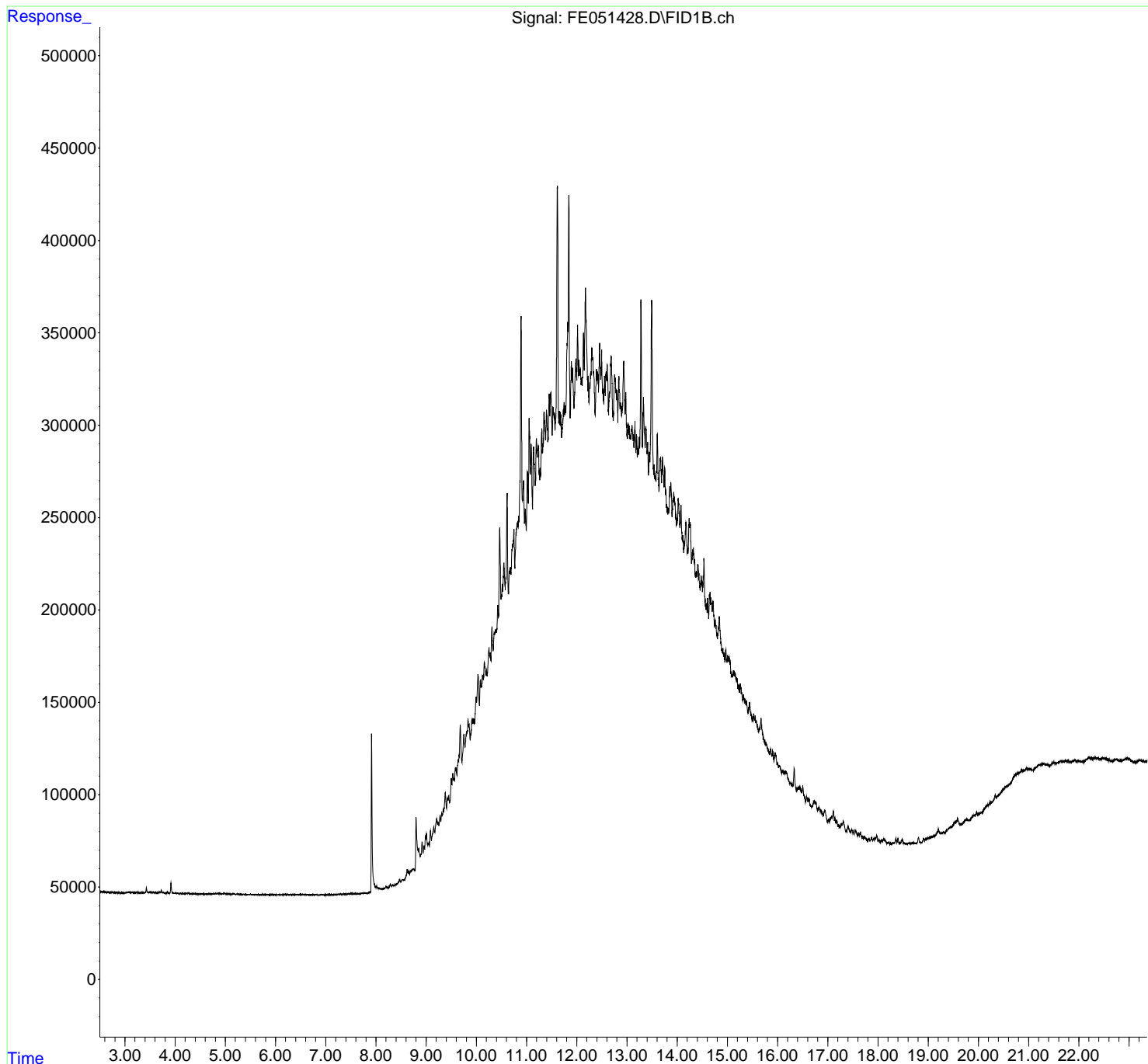
(m)=manual int.

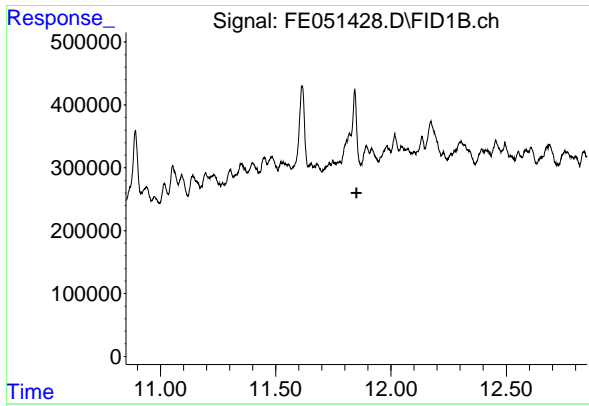
Data Path : Z:\pestpcbsrv\HPCHEM1\FID_E\Data\FE112524AL\
 Data File : FE051428.D
 Signal(s) : FID1B.ch
 Acq On : 25 Nov 2024 10:44
 Operator : YP\AJ
 Sample : P4949-03DL 5X
 Misc :
 ALS Vial : 13 Sample Multiplier: 1

Instrument :
 FID_E
ClientSampleId :
 CONTAINMENT-STONEDL

Integration File: autoint1.e
 Quant Time: Nov 25 11:07:14 2024
 Quant Method : Z:\pestpcbsrv\HPCHEM1\FID_E\methods\Aliphatic EPH 110724.M
 Quant Title : GC Extractables
 QLast Update : Thu Nov 07 04:56:04 2024
 Response via : Initial Calibration
 Integrator: ChemStation

Volume Inj. : 1 ul
 Signal Phase : Rxi-1ms
 Signal Info : 20M x 0.18mm x 0.18um

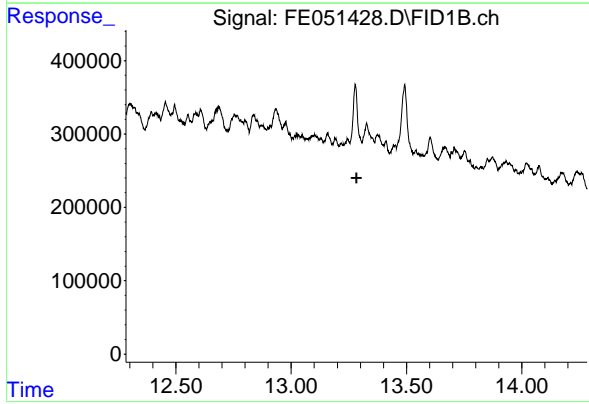




#9 ortho-Terphenyl (SURR)

R.T.: 0.000 min
 Exp R.T. : 11.850 min
 Response: 0
 Conc: N.D.

Instrument :
 FID_E
 ClientSampleId :
 CONTAINMENT-STONEDL



#12 1-chlorooctadecane (SURR)

R.T.: 0.000 min
 Exp R.T. : 13.283 min
 Response: 0
 Conc: N.D.