

Data Path : Z:\pestpcbsrv\HPCHEM1\FID_E\Data\FE120122AL\
 Data File : FE039069.D
 Signal(s) : FID1B.ch
 Acq On : 01 Dec 2022 19:31
 Operator : YP\AJ
 Sample : N5818-04
 Misc :
 ALS Vial : 16 Sample Multiplier: 1

Instrument :
 FID_E
 ClientSampleId :
 TR-04-113022

Integration File: autoint1.e
 Quant Time: Dec 02 02:55:28 2022
 Quant Method : Z:\pestpcbsrv\HPCHEM1\FID_E\methods\Aliphatic EPH 111922.M
 Quant Title : GC Extractables
 QLast Update : Sat Nov 19 05:37:37 2022
 Response via : Initial Calibration
 Integrator: ChemStation

Volume Inj. : 1 ul
 Signal Phase : Rxi-1ms
 Signal Info : 20M x 0.18mm x 0.18um

Compound	R.T.	Response	Conc Units

System Monitoring Compounds			
9) S ortho-Terphenyl (SURR)	11.949	5833014	37.286 ug/ml
Spiked Amount	50.000	Recovery	= 74.57%
12) S 1-chlorooctadecane (S...	13.379	21228726	175.822 ug/ml
Spiked Amount	50.000	Recovery	= 351.64%

Target Compounds

(f)=RT Delta > 1/2 Window

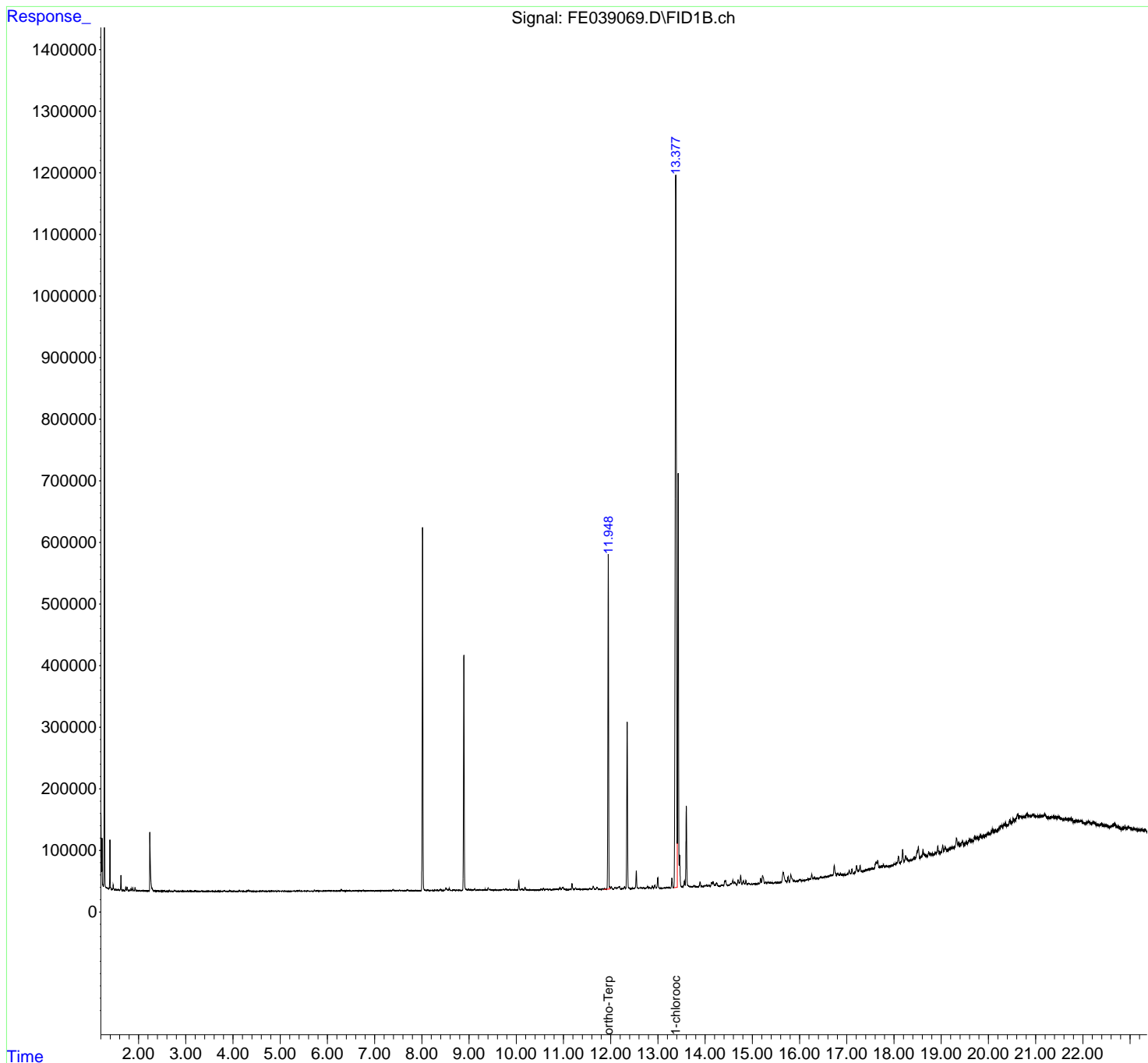
(m)=manual int.

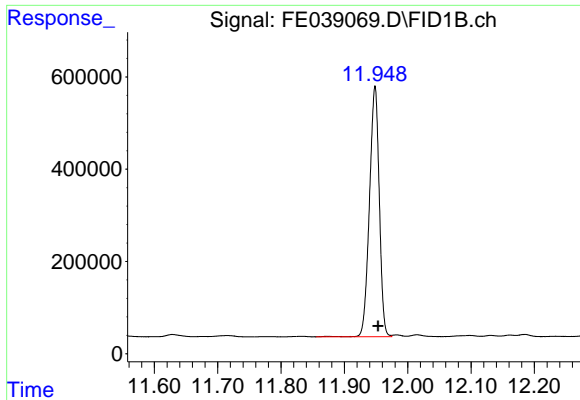
Data Path : Z:\pestpcbsrv\HPCHEM1\FID_E\Data\FE120122AL\
 Data File : FE039069.D
 Signal(s) : FID1B.ch
 Acq On : 01 Dec 2022 19:31
 Operator : YP\AJ
 Sample : N5818-04
 Misc :
 ALS Vial : 16 Sample Multiplier: 1

Instrument :
 FID_E
 ClientSampleId :
 TR-04-113022

Integration File: autoint1.e
 Quant Time: Dec 02 02:55:28 2022
 Quant Method : Z:\pestpcbsrv\HPCHEM1\FID_E\methods\Aliphatic EPH 111922.M
 Quant Title : GC Extractables
 QLast Update : Sat Nov 19 05:37:37 2022
 Response via : Initial Calibration
 Integrator: ChemStation

Volume Inj. : 1 ul
 Signal Phase : Rxi-1ms
 Signal Info : 20M x 0.18mm x 0.18um

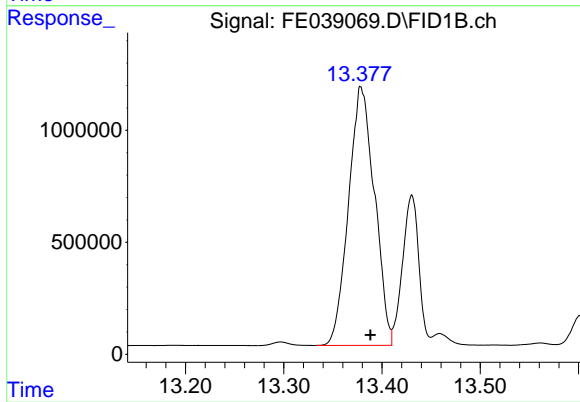




#9 ortho-Terphenyl (SURR)

R.T.: 11.949 min
Delta R.T.: -0.005 min
Response: 5833014
Conc: 37.29 ug/ml

Instrument :
FID_E
ClientSampleId :
TR-04-113022



#12 1-chlorooctadecane (SURR)

R.T.: 13.379 min
Delta R.T.: -0.009 min
Response: 21228726
Conc: 175.82 ug/ml