

Data Path : Z:\pestpcbsrv\HPCHEM1\FID_E\Data\FE120224AL\
 Data File : FE051496.D
 Signal(s) : FID1B.ch
 Acq On : 02 Dec 2024 11:53
 Operator : YP\AJ
 Sample : 100 PPM ALIPHATIC HC STD1
 Misc :
 ALS Vial : 11 Sample Multiplier: 1

Instrument :
 FID_E
 ClientSampleId :

Integration File: autoint1.e
 Quant Time: Dec 02 13:22:14 2024
 Quant Method : Z:\pestpcbsrv\HPCHEM1\FID_E\methods\Aliphatic EPH 120224.M
 Quant Title : GC Extractables
 QLast Update : Mon Dec 02 13:20:01 2024
 Response via : Initial Calibration
 Integrator: ChemStation

Volume Inj. : 1 ul
 Signal Phase : Rxi-1ms
 Signal Info : 20M x 0.18mm x 0.18um

Compound	R.T.	Response	Conc Units

System Monitoring Compounds			
9) S ortho-Terphenyl (SURR)	11.840	14362423	97.780 ug/ml
Spiked Amount	50.000	Recovery	= 195.56%
12) S 1-chlorooctadecane (S...	13.271	10928522	99.006 ug/ml
Spiked Amount	50.000	Recovery	= 198.01%
Target Compounds			
1) T n-Nonane (C9)	3.226	13344220	97.713 ug/ml
2) T n-Decane (C10)	4.474	13560535	97.866 ug/ml
3) T A~Naphthalene (C11.7)	6.186	13888800	103.025 ug/ml
4) T n-Dodecane (C12)	6.643	13634481	98.040 ug/ml
5) T A~2-methylnaphthalene...	7.282	13217160	105.274 ug/ml
6) T n-Tetradecane (C14)	8.470	13389008	98.229 ug/ml
7) T n-Hexadecane (C16)	10.075	13641471	97.978 ug/ml
8) T n-Octadecane (C18)	11.518	13688274	97.805 ug/ml
10) T n-Eicosane (C20)	12.824	13071418	97.509 ug/ml
11) T n-Heneicosane (C21)	13.436	12823684	97.509 ug/ml
13) T n-Docosane (C22)	14.021	12703886	97.608 ug/ml
14) T n-Tetracosane (C24)	15.123	12578418	97.789 ug/ml
15) T n-Hexacosane (C26)	16.142	12363222	97.845 ug/ml
16) T n-Octacosane (C28)	17.090	12121842	97.785 ug/ml
17) T n-Tricontane (C30)	17.977	12229194	97.649 ug/ml
18) T n-Dotriacontane (C32)	18.808	11739166	97.368 ug/ml
19) T n-Tetratriacontane (C34)	19.590	10536921	97.842 ug/ml
20) T n-Hexatriacontane (C36)	20.329	9347703	98.591 ug/ml
21) T n-Octatriacontane (C38)	21.050	9021861	98.655 ug/ml
22) T n-Tetracontane (C40)	21.926	8835069	101.590 ug/ml

(f)=RT Delta > 1/2 Window

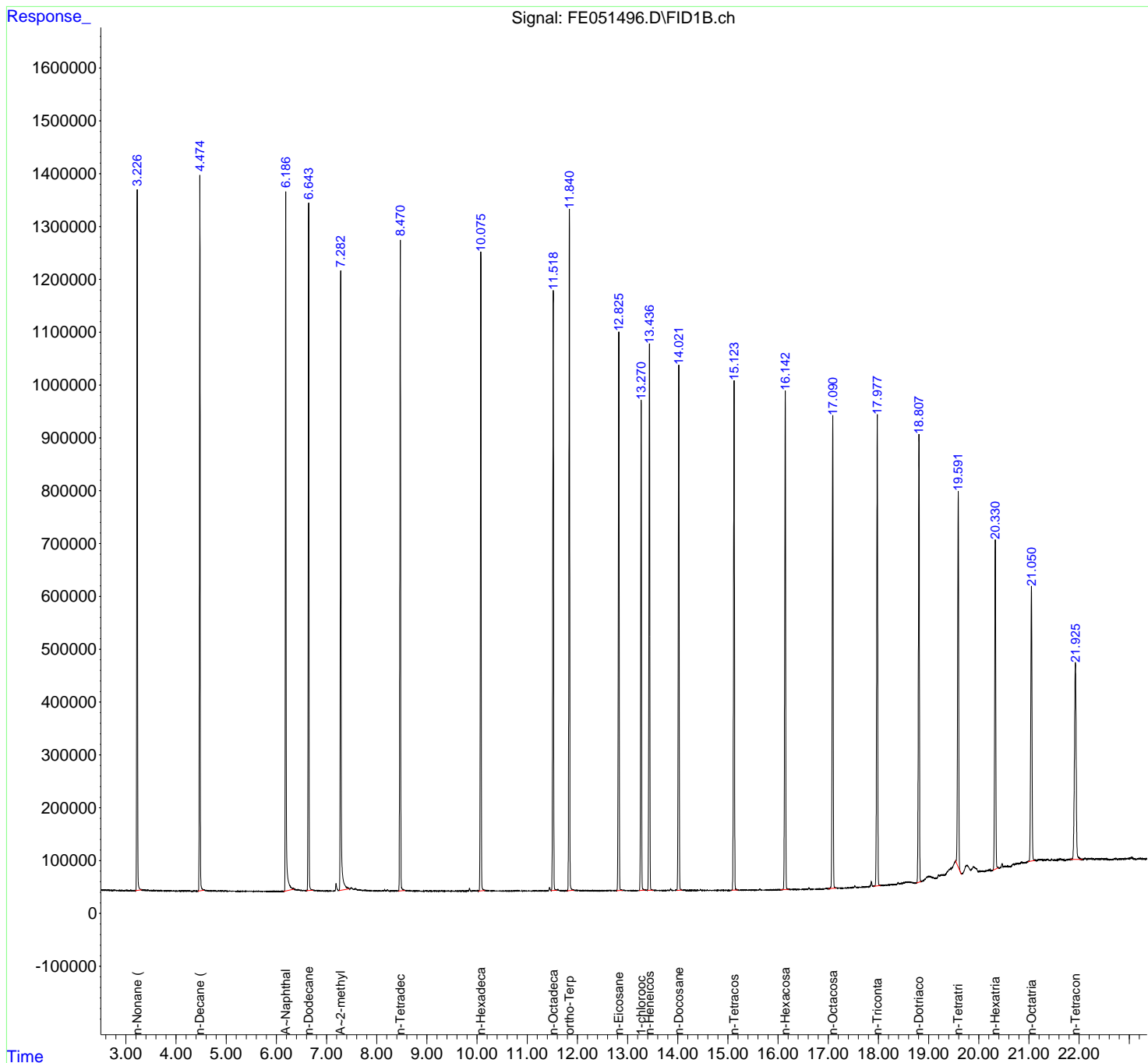
(m)=manual int.

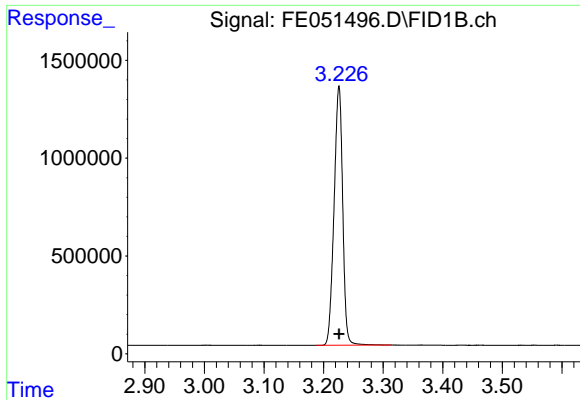
Data Path : Z:\pestpcbsrv\HPCHEM1\FID_E\Data\FE120224AL\
 Data File : FE051496.D
 Signal(s) : FID1B.ch
 Acq On : 02 Dec 2024 11:53
 Operator : YP\AJ
 Sample : 100 PPM ALIPHATIC HC STD1
 Misc :
 ALS Vial : 11 Sample Multiplier: 1

Instrument :
 FID_E
 ClientSampleId :

Integration File: autoint1.e
 Quant Time: Dec 02 13:22:14 2024
 Quant Method : Z:\pestpcbsrv\HPCHEM1\FID_E\methods\Aliphatic EPH 120224.M
 Quant Title : GC Extractables
 QLast Update : Mon Dec 02 13:20:01 2024
 Response via : Initial Calibration
 Integrator: ChemStation

Volume Inj. : 1 ul
 Signal Phase : Rxi-1ms
 Signal Info : 20M x 0.18mm x 0.18um

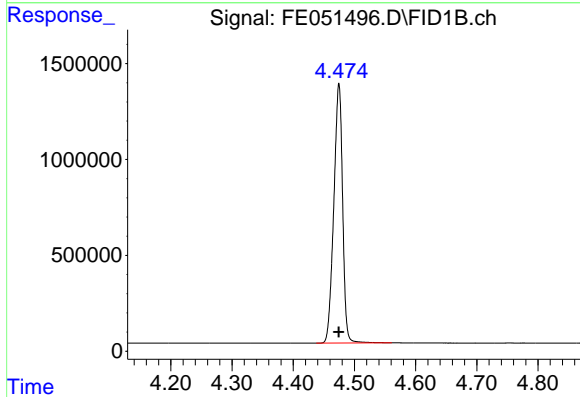




#1 n-Nonane (C9)

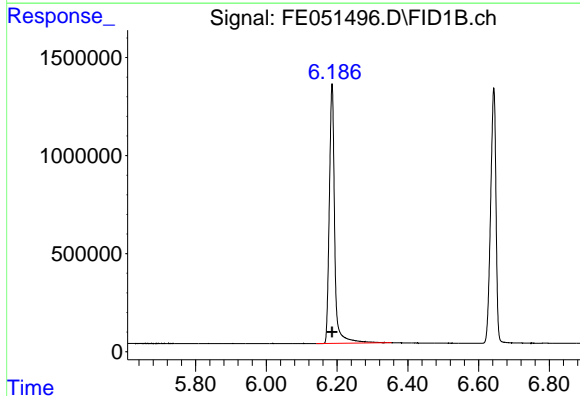
R.T.: 3.226 min
 Delta R.T.: 0.000 min
 Response: 13344220
 Conc: 97.71 ug/ml

Instrument :
 FID_E
 ClientSampleId :



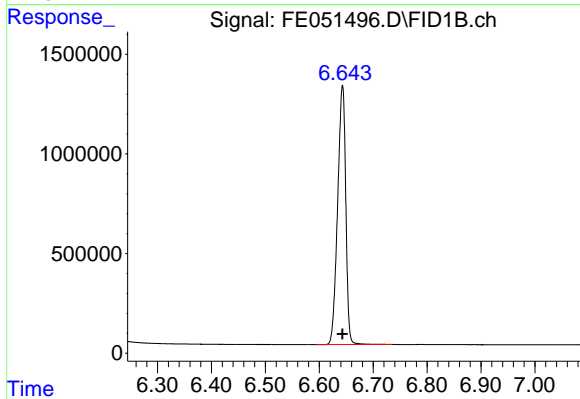
#2 n-Decane (C10)

R.T.: 4.474 min
 Delta R.T.: 0.000 min
 Response: 13560535
 Conc: 97.87 ug/ml



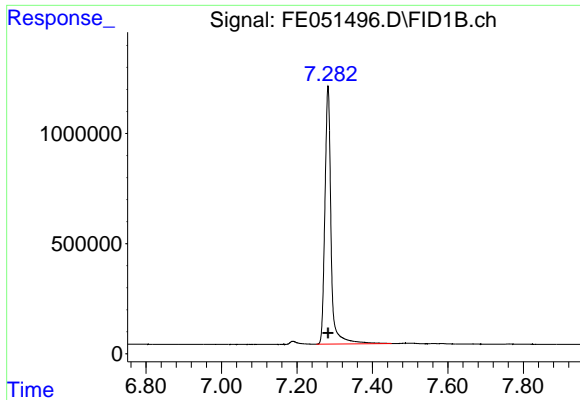
#3 A~Naphthalene (C11.7)

R.T.: 6.186 min
 Delta R.T.: 0.000 min
 Response: 13888800
 Conc: 103.03 ug/ml



#4 n-Dodecane (C12)

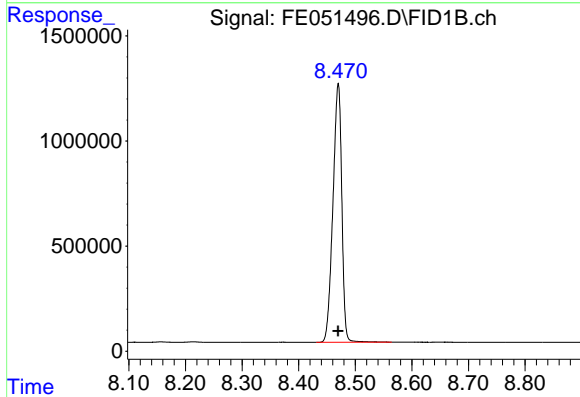
R.T.: 6.643 min
 Delta R.T.: 0.000 min
 Response: 13634481
 Conc: 98.04 ug/ml



#5 A~2-methylnaphthalene (C12.89)

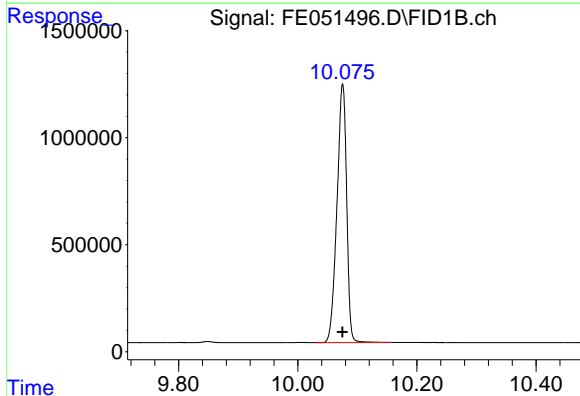
R.T.: 7.282 min
 Delta R.T.: 0.000 min
 Response: 13217160
 Conc: 105.27 ug/ml

Instrument :
 FID_E
 ClientSampleId :



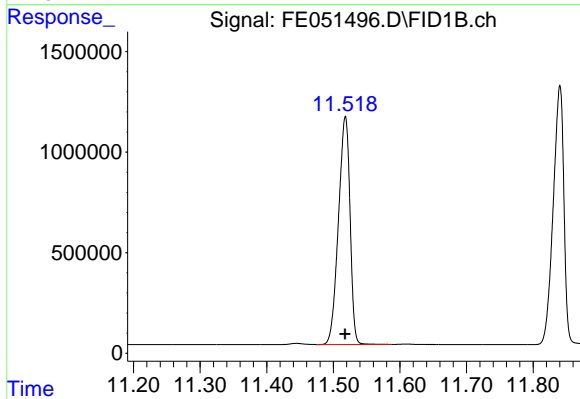
#6 n-Tetradecane (C14)

R.T.: 8.470 min
 Delta R.T.: 0.000 min
 Response: 13389008
 Conc: 98.23 ug/ml



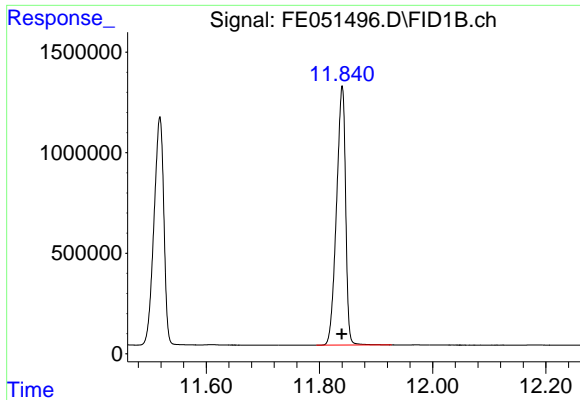
#7 n-Hexadecane (C16)

R.T.: 10.075 min
 Delta R.T.: 0.000 min
 Response: 13641471
 Conc: 97.98 ug/ml



#8 n-Octadecane (C18)

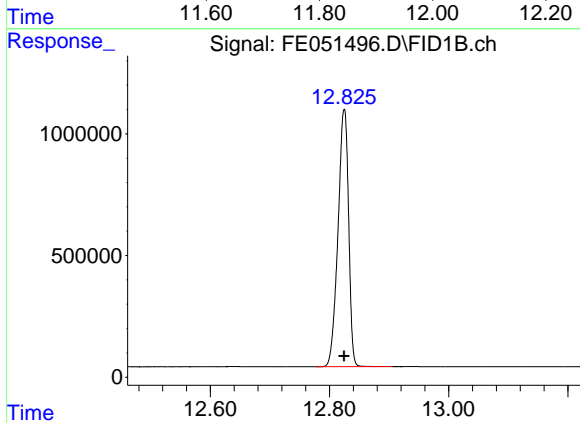
R.T.: 11.518 min
 Delta R.T.: 0.000 min
 Response: 13688274
 Conc: 97.80 ug/ml



#9 ortho-Terphenyl (SURR)

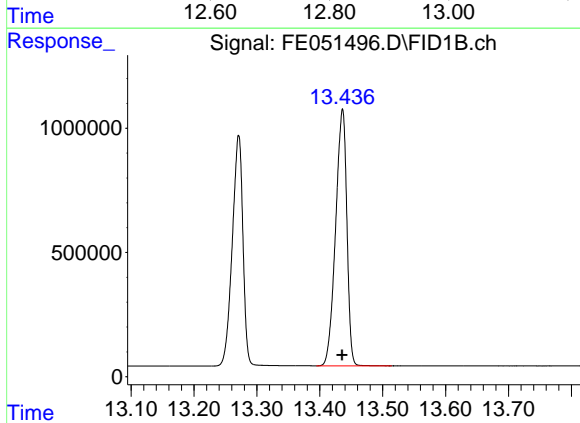
R.T.: 11.840 min
 Delta R.T.: 0.000 min
 Response: 14362423
 Conc: 97.78 ug/ml

Instrument :
 FID_E
 ClientSampleId :



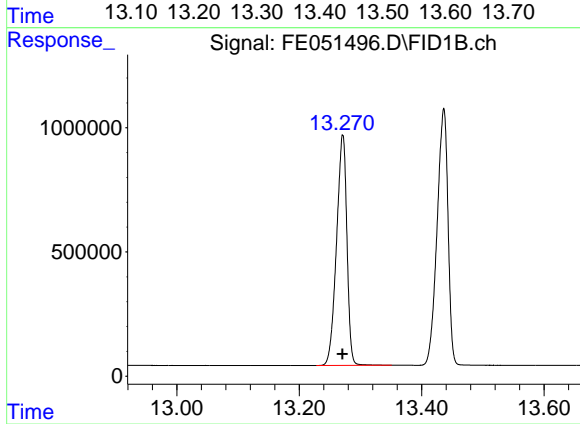
#10 n-Eicosane (C20)

R.T.: 12.824 min
 Delta R.T.: 0.000 min
 Response: 13071418
 Conc: 97.51 ug/ml



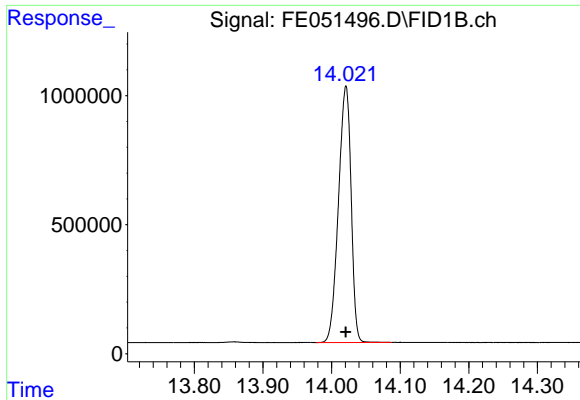
#11 n-Heneicosane (C21)

R.T.: 13.436 min
 Delta R.T.: 0.000 min
 Response: 12823684
 Conc: 97.51 ug/ml



#12 1-chlorooctadecane (SURR)

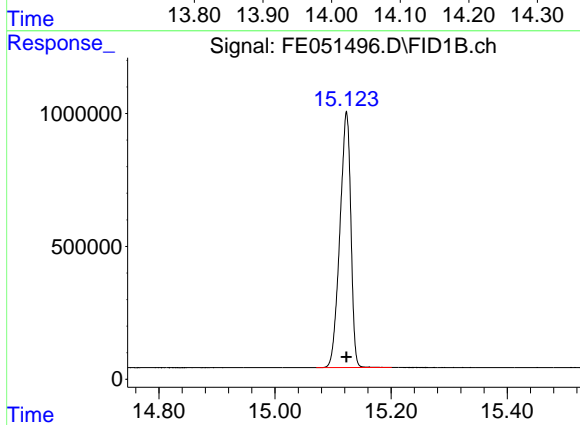
R.T.: 13.271 min
 Delta R.T.: 0.000 min
 Response: 10928522
 Conc: 99.01 ug/ml



#13 n-Docosane (C22)

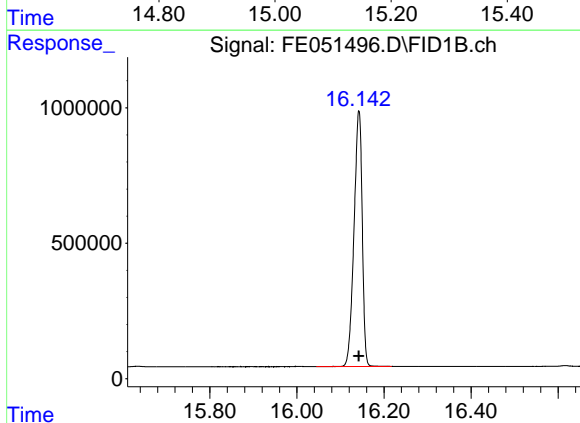
R.T.: 14.021 min
Delta R.T.: 0.000 min
Response: 12703886
Conc: 97.61 ug/ml

Instrument :
FID_E
ClientSampleId :



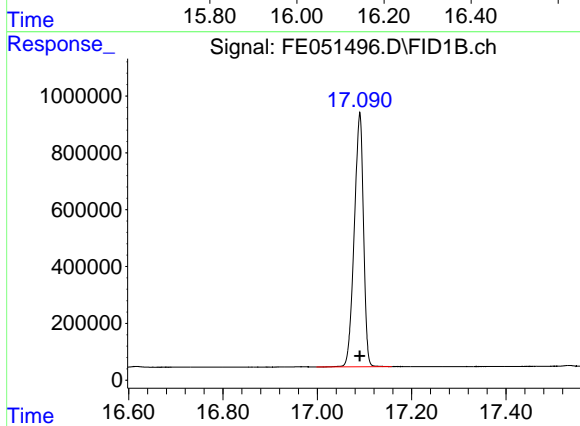
#14 n-Tetracosane (C24)

R.T.: 15.123 min
Delta R.T.: 0.000 min
Response: 12578418
Conc: 97.79 ug/ml



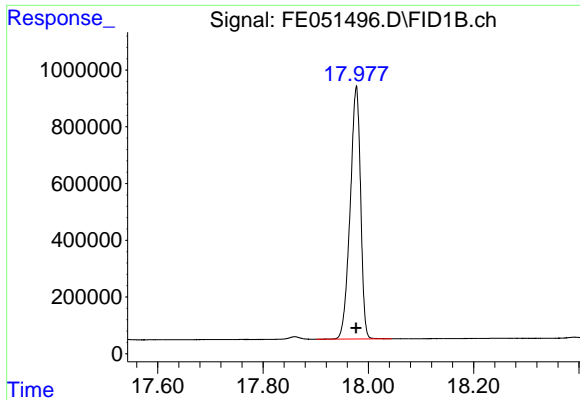
#15 n-Hexacosane (C26)

R.T.: 16.142 min
Delta R.T.: 0.000 min
Response: 12363222
Conc: 97.85 ug/ml



#16 n-Octacosane (C28)

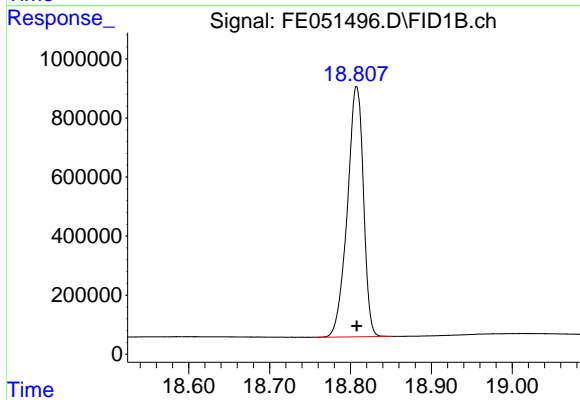
R.T.: 17.090 min
Delta R.T.: 0.000 min
Response: 12121842
Conc: 97.79 ug/ml



#17 n-Tricontane (C30)

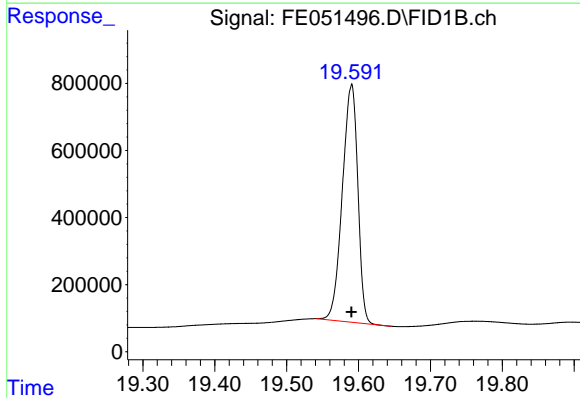
R.T.: 17.977 min
Delta R.T.: 0.000 min
Response: 12229194
Conc: 97.65 ug/ml

Instrument :
FID_E
ClientSampleId :



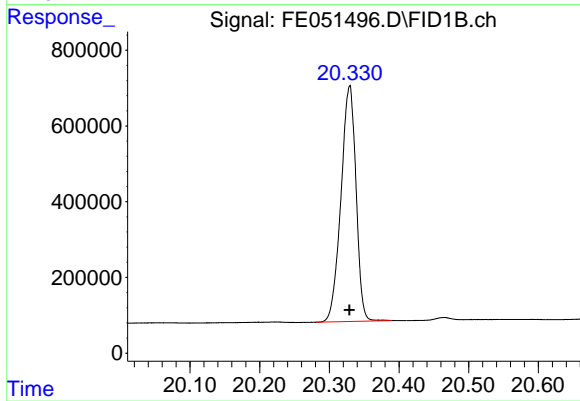
#18 n-Dotriacontane (C32)

R.T.: 18.808 min
Delta R.T.: 0.000 min
Response: 11739166
Conc: 97.37 ug/ml



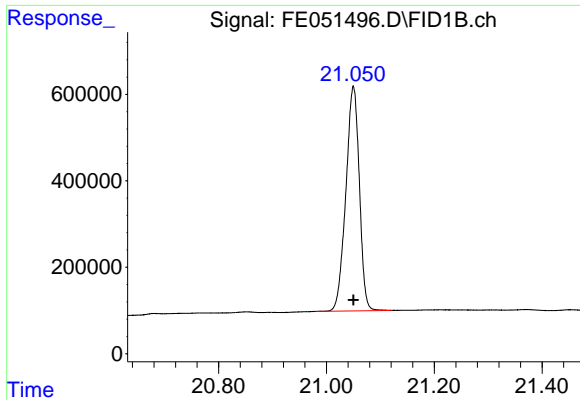
#19 n-Tetratriacontane (C34)

R.T.: 19.590 min
Delta R.T.: 0.000 min
Response: 10536921
Conc: 97.84 ug/ml



#20 n-Hexatriacontane (C36)

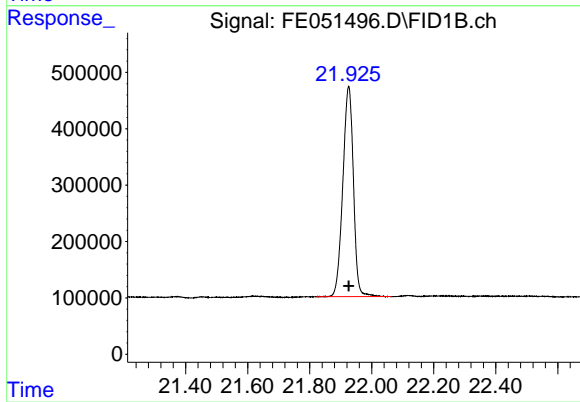
R.T.: 20.329 min
Delta R.T.: 0.000 min
Response: 9347703
Conc: 98.59 ug/ml



#21 n-Octatriacontane (C38)

R.T.: 21.050 min
Delta R.T.: 0.000 min
Response: 9021861
Conc: 98.66 ug/ml

Instrument :
FID_E
ClientSampleId :



#22 n-Tetracontane (C40)

R.T.: 21.926 min
Delta R.T.: 0.000 min
Response: 8835069
Conc: 101.59 ug/ml