

Data Path : Z:\pestpcbsrv\HPCHEM1\FID_E\Data\FE120524AL\
 Data File : FE051549.D
 Signal(s) : FID1B.ch
 Acq On : 05 Dec 2024 15:33
 Operator : YP\AJ
 Sample : P5096-06
 Misc :
 ALS Vial : 14 Sample Multiplier: 1

Instrument :
 FID_E
ClientSampleId :
 MH-A-EPH

Integration File: autoint1.e
 Quant Time: Dec 06 02:07:51 2024
 Quant Method : Z:\pestpcbsrv\HPCHEM1\FID_E\methods\Aliphatic EPH 120224.M
 Quant Title : GC Extractables
 QLast Update : Mon Dec 02 14:18:35 2024
 Response via : Initial Calibration
 Integrator: ChemStation

Volume Inj. : 1 ul
 Signal Phase : Rxi-1ms
 Signal Info : 20M x 0.18mm x 0.18um

Compound	R.T.	Response	Conc Units

System Monitoring Compounds			
9) S ortho-Terphenyl (SURR)	11.829	5735329	37.953 ug/ml
Spiked Amount	50.000	Recovery	= 75.91%
12) S 1-chlorooctadecane (S...	13.261	4810845	43.049 ug/ml
Spiked Amount	50.000	Recovery	= 86.10%

Target Compounds

(f)=RT Delta > 1/2 Window

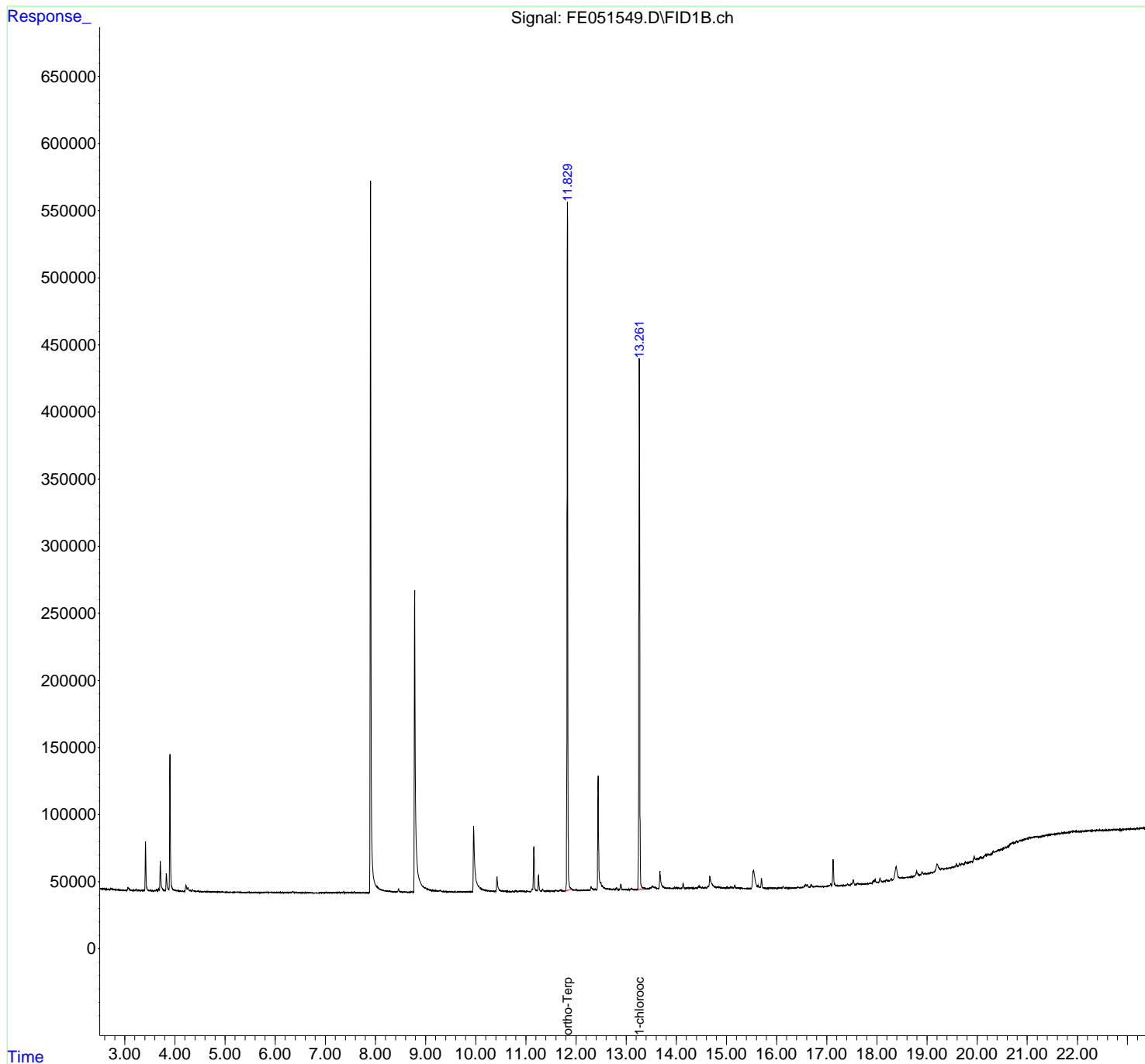
(m)=manual int.

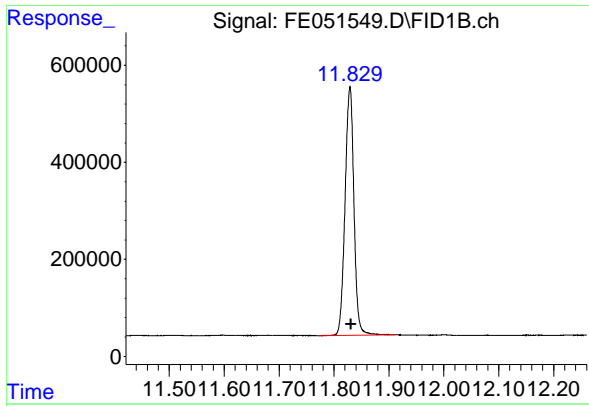
Data Path : Z:\pestpcbsrv\HPCHEM1\FID_E\Data\FE120524AL\
 Data File : FE051549.D
 Signal(s) : FID1B.ch
 Acq On : 05 Dec 2024 15:33
 Operator : YP\AJ
 Sample : P5096-06
 Misc :
 ALS Vial : 14 Sample Multiplier: 1

Instrument :
 FID_E
 ClientSampleId :
 MH-A-EPH

Integration File: autoint1.e
 Quant Time: Dec 06 02:07:51 2024
 Quant Method : Z:\pestpcbsrv\HPCHEM1\FID_E\methods\Aliphatic EPH 120224.M
 Quant Title : GC Extractables
 QLast Update : Mon Dec 02 14:18:35 2024
 Response via : Initial Calibration
 Integrator: ChemStation

Volume Inj. : 1 ul
 Signal Phase : Rxi-1ms
 Signal Info : 20M x 0.18mm x 0.18um

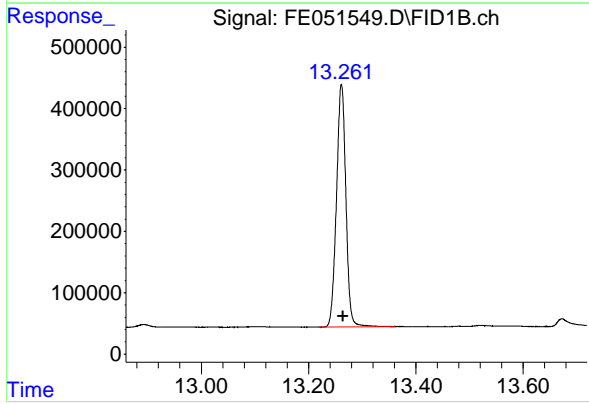




#9 ortho-Terphenyl (SURR)

R.T.: 11.829 min
Delta R.T.: -0.002 min
Response: 5735329
Conc: 37.95 ug/ml

Instrument :
FID_E
ClientSampleId :
MH-A-EPH



#12 1-chlorooctadecane (SURR)

R.T.: 13.261 min
Delta R.T.: -0.003 min
Response: 4810845
Conc: 43.05 ug/ml