

Data Path : Z:\pestpcbsrv\HPCHEM1\FID_E\Data\FE120622AL\
 Data File : FE039142.D
 Signal(s) : FID1B.ch
 Acq On : 06 Dec 2022 07:51
 Operator : YP\AJ
 Sample : MECL2
 Misc :
 ALS Vial : 1 Sample Multiplier: 1

Instrument :
 FID_E
 ClientSampleId :

Integration File: autoint1.e
 Quant Time: Dec 06 10:55:04 2022
 Quant Method : Z:\pestpcbsrv\HPCHEM1\FID_E\methods\Aliphatic EPH 111922.M
 Quant Title : GC Extractables
 QLast Update : Sat Nov 19 05:37:37 2022
 Response via : Initial Calibration
 Integrator: ChemStation

Volume Inj. : 1 ul
 Signal Phase : Rxi-1ms
 Signal Info : 20M x 0.18mm x 0.18um

Compound	R.T.	Response	Conc Units

System Monitoring Compounds			
Target Compounds			
10) T n-Eicosane (C20)	12.926	94450	0.665 ug/ml
11) T n-Heneicosane (C21)	13.542	92498	0.651 ug/ml
13) T n-Docosane (C22)	14.129	85512	0.612 ug/ml
14) T n-Tetracosane (C24)	15.230	91506	0.663 ug/ml
15) T n-Hexacosane (C26)	16.252	60893	0.453 ug/ml
16) T n-Octacosane (C28)	17.206	44769	0.337 ug/ml
17) T n-Tricontane (C30)	18.090	54767	0.415 ug/ml
18) T n-Dotriacontane (C32)	18.924	120104	0.901 ug/ml
19) T n-Tetratriacontane (C34)	19.707	70485	0.533 ug/ml
20) T n-Hexatriacontane (C36)	20.450	73165	0.570 ug/ml
21) T n-Octatriacontane (C38)	21.188	464392	3.544 ug/ml
22) T n-Tetracontane (C40)	22.106	292695	2.150 ug/ml

(f)=RT Delta > 1/2 Window

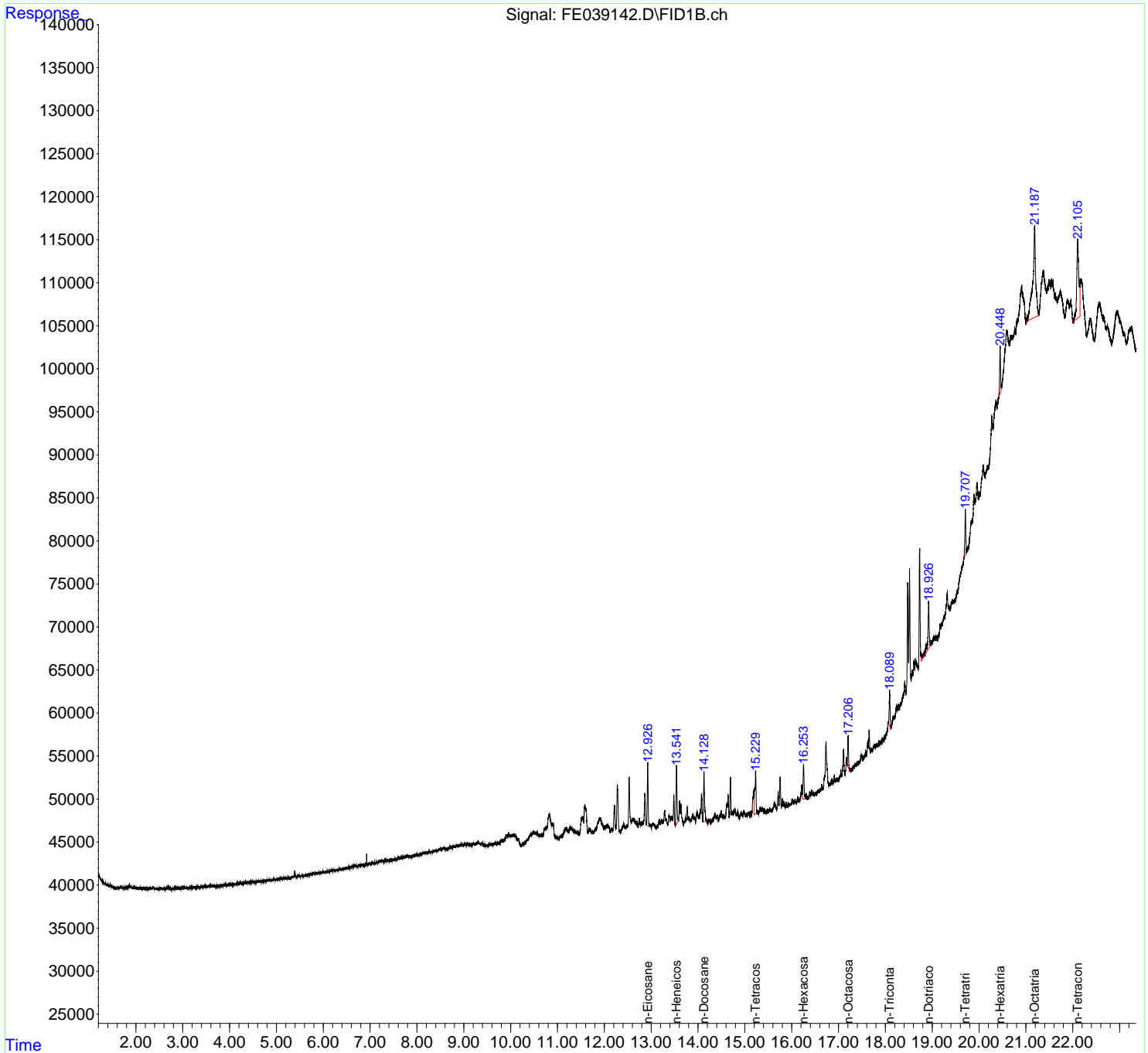
(m)=manual int.

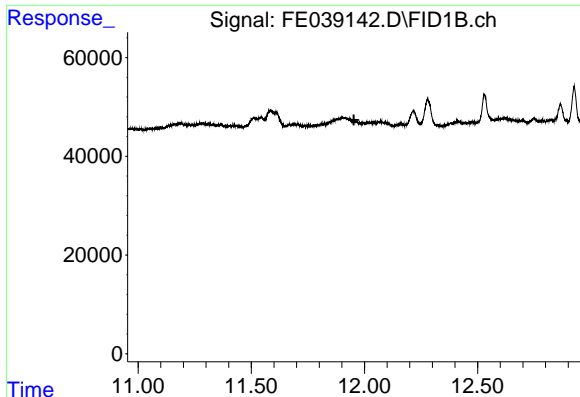
Data Path : Z:\pestpcbsrv\HPCHEM1\FID_E\Data\FE120622AL\
 Data File : FE039142.D
 Signal(s) : FID1B.ch
 Acq On : 06 Dec 2022 07:51
 Operator : YP\AJ
 Sample : MECL2
 Misc :
 ALS Vial : 1 Sample Multiplier: 1

Instrument :
 FID_E
 ClientSampleId :

Integration File: autoint1.e
 Quant Time: Dec 06 10:55:04 2022
 Quant Method : Z:\pestpcbsrv\HPCHEM1\FID_E\methods\Aliphatic EPH 111922.M
 Quant Title : GC Extractables
 QLast Update : Sat Nov 19 05:37:37 2022
 Response via : Initial Calibration
 Integrator: ChemStation

Volume Inj. : 1 ul
 Signal Phase : Rxi-1ms
 Signal Info : 20M x 0.18mm x 0.18um

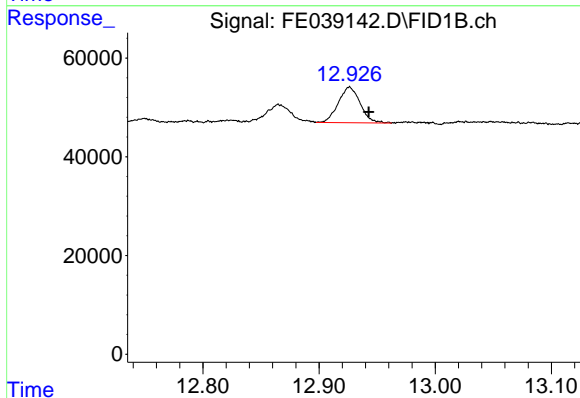




#9 ortho-Terphenyl (SURR)

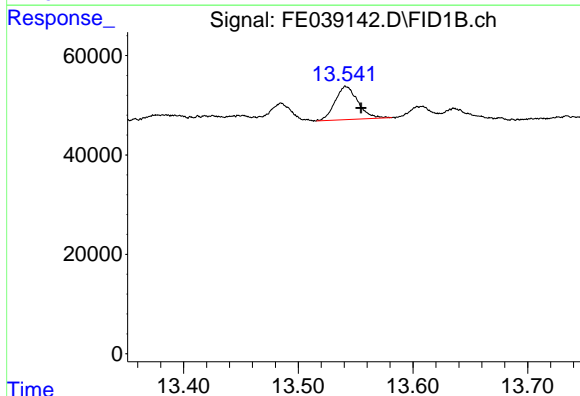
R.T.: 0.000 min
 Exp R.T.: 11.953 min
 Response: 0
 Conc: N.D.

Instrument :
 FID_E
 ClientSampleId :



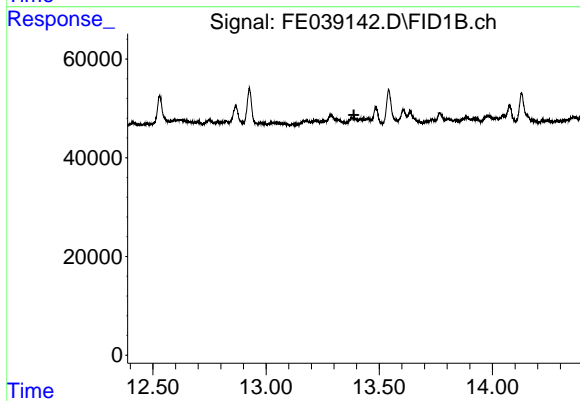
#10 n-Eicosane (C20)

R.T.: 12.926 min
 Delta R.T.: -0.017 min
 Response: 94450
 Conc: 0.67 ug/ml



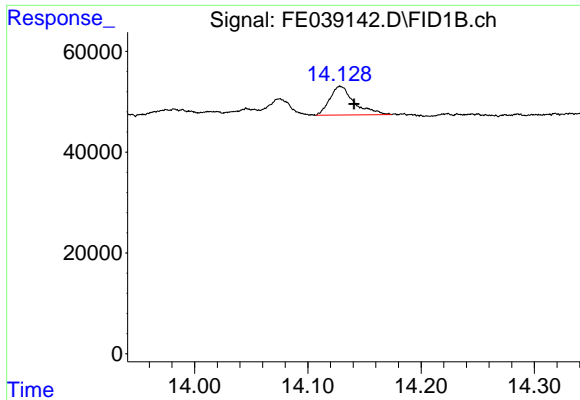
#11 n-Heneicosane (C21)

R.T.: 13.542 min
 Delta R.T.: -0.013 min
 Response: 92498
 Conc: 0.65 ug/ml



#12 1-chlorooctadecane (SURR)

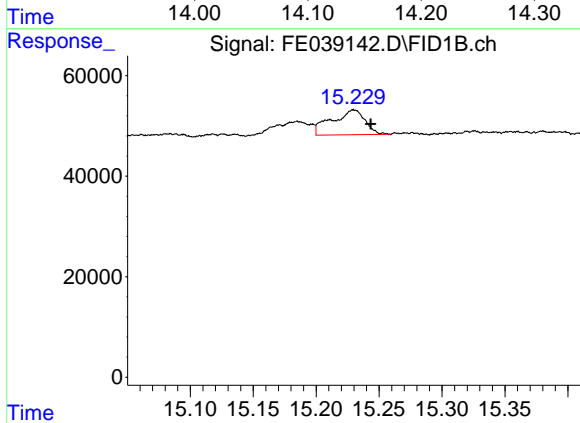
R.T.: 0.000 min
 Exp R.T.: 13.388 min
 Response: 0
 Conc: N.D.



#13 n-Docosane (C22)

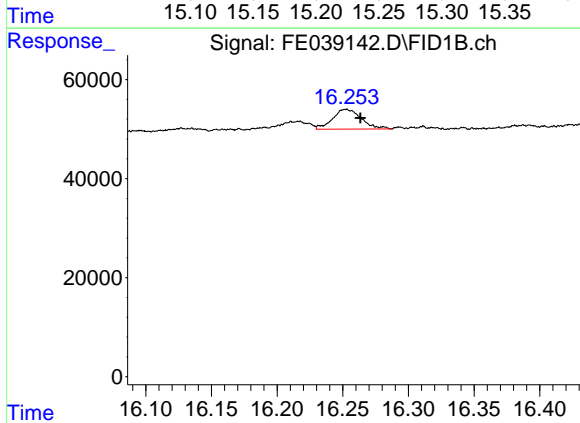
R.T.: 14.129 min
 Delta R.T.: -0.012 min
 Response: 85512
 Conc: 0.61 ug/ml

Instrument :
 FID_E
 ClientSampleId :



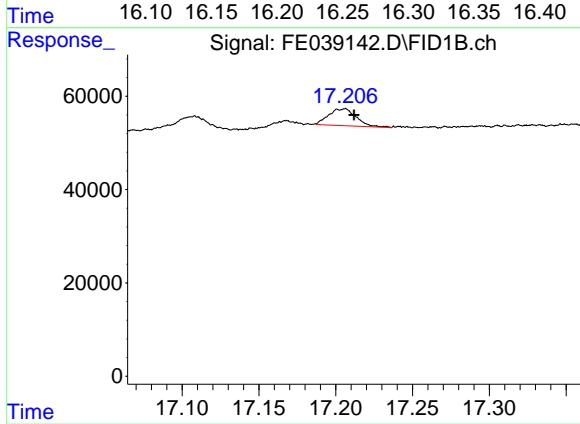
#14 n-Tetracosane (C24)

R.T.: 15.230 min
 Delta R.T.: -0.014 min
 Response: 91506
 Conc: 0.66 ug/ml



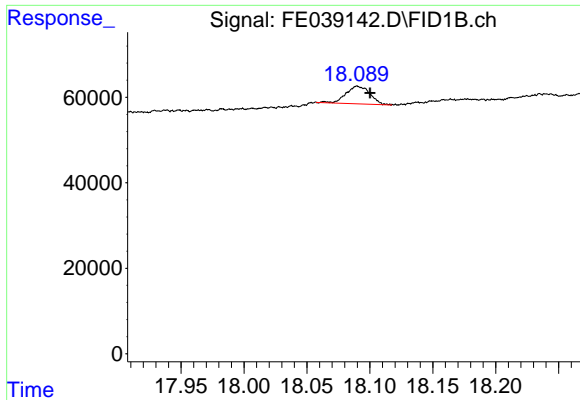
#15 n-Hexacosane (C26)

R.T.: 16.252 min
 Delta R.T.: -0.011 min
 Response: 60893
 Conc: 0.45 ug/ml



#16 n-Octacosane (C28)

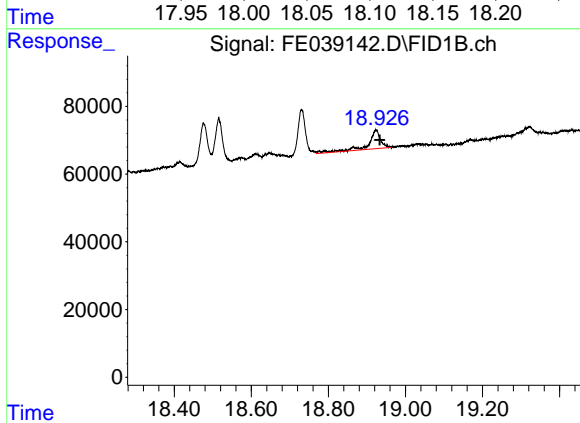
R.T.: 17.206 min
 Delta R.T.: -0.006 min
 Response: 44769
 Conc: 0.34 ug/ml



#17 n-Tricontane (C30)

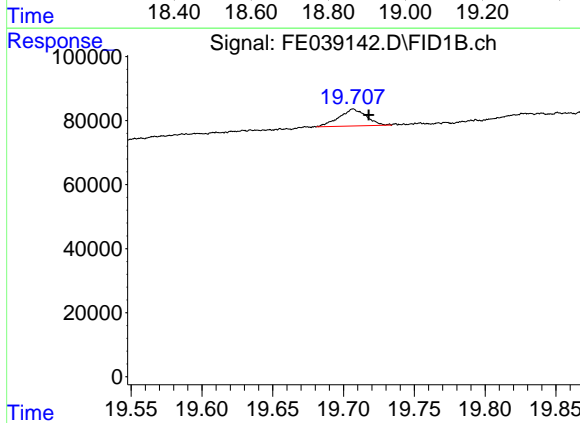
R.T.: 18.090 min
 Delta R.T.: -0.010 min
 Response: 54767
 Conc: 0.41 ug/ml

Instrument :
 FID_E
 ClientSampleId :



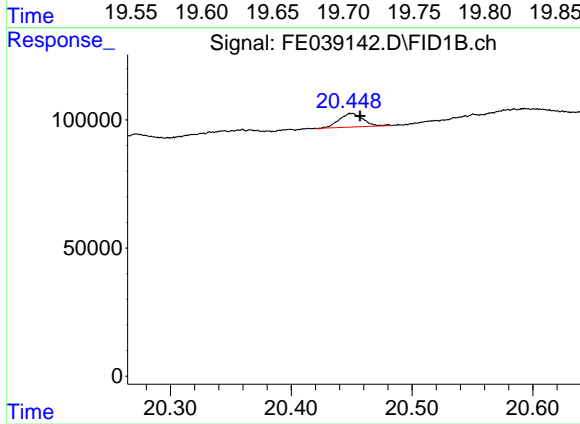
#18 n-Dotriacontane (C32)

R.T.: 18.924 min
 Delta R.T.: -0.009 min
 Response: 120104
 Conc: 0.90 ug/ml



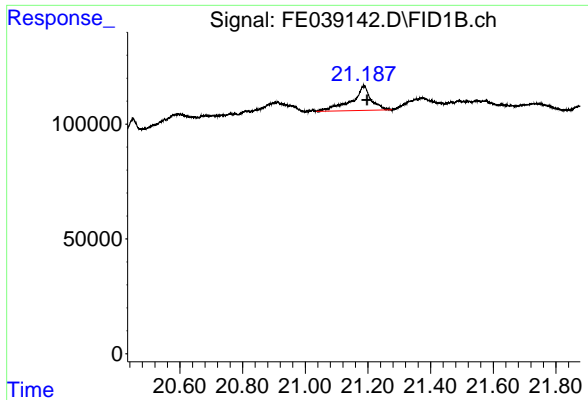
#19 n-Tetratriacontane (C34)

R.T.: 19.707 min
 Delta R.T.: -0.011 min
 Response: 70485
 Conc: 0.53 ug/ml



#20 n-Hexatriacontane (C36)

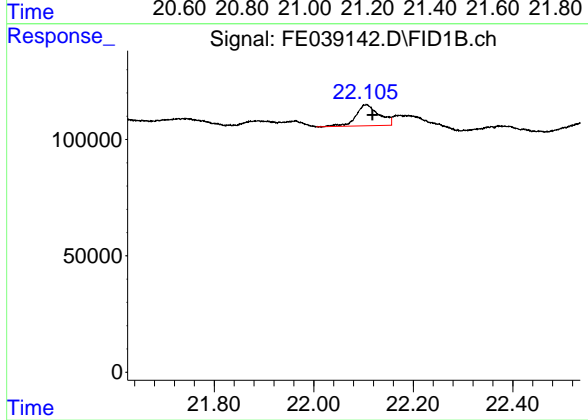
R.T.: 20.450 min
 Delta R.T.: -0.007 min
 Response: 73165
 Conc: 0.57 ug/ml



#21 n-Octatriacontane (C38)

R.T.: 21.188 min
Delta R.T.: -0.009 min
Response: 464392
Conc: 3.54 ug/ml

Instrument :
FID_E
ClientSampleId :



#22 n-Tetracontane (C40)

R.T.: 22.106 min
Delta R.T.: -0.011 min
Response: 292695
Conc: 2.15 ug/ml