

Data Path : Z:\pestpcbsrv\HPCHEM1\FID_E\Data\FE120622AL\
 Data File : FE039161.D
 Signal(s) : FID1B.ch
 Acq On : 06 Dec 2022 19:27
 Operator : YP\AJ
 Sample : 20 PPM ALIPHATIC HC STD
 Misc :
 ALS Vial : 2 Sample Multiplier: 1

Instrument :
 FID_E
 ClientSampleId :

Integration File: autoint1.e
 Quant Time: Dec 07 04:26:14 2022
 Quant Method : Z:\pestpcbsrv\HPCHEM1\FID_E\methods\Aliphatic EPH 111922.M
 Quant Title : GC Extractables
 QLast Update : Sat Nov 19 05:37:37 2022
 Response via : Initial Calibration
 Integrator: ChemStation

Volume Inj. : 1 ul
 Signal Phase : Rxi-1ms
 Signal Info : 20M x 0.18mm x 0.18um

Compound	R.T.	Response	Conc Units

System Monitoring Compounds			
9) S ortho-Terphenyl (SURR)	11.942	2969308	18.981 ug/ml
Spiked Amount	50.000	Recovery =	37.96%
12) S 1-chlorooctadecane (S...	13.376	2264443	18.755 ug/ml
Spiked Amount	50.000	Recovery =	37.51%
Target Compounds			
1) T n-Nonane (C9)	3.338	2505308	17.674 ug/ml
2) T n-Decane (C10)	4.588	2454159	17.608 ug/ml
3) T A~Naphthalene (C11.7)	6.290	2839790	17.854 ug/ml
4) T n-Dodecane (C12)	6.751	2495216	17.702 ug/ml
5) T A~2-methylnaphthalene...	7.384	2673700	17.864 ug/ml
6) T n-Tetradecane (C14)	8.576	2545667	17.824 ug/ml
7) T n-Hexadecane (C16)	10.182	2657637	18.177 ug/ml
8) T n-Octadecane (C18)	11.624	2733094	18.574 ug/ml
10) T n-Eicosane (C20)	12.932	2685706	18.918 ug/ml
11) T n-Heneicosane (C21)	13.544	2690396	18.933 ug/ml
13) T n-Docosane (C22)	14.129	2677788	19.156 ug/ml
14) T n-Tetracosane (C24)	15.232	2667252	19.313 ug/ml
15) T n-Hexacosane (C26)	16.253	2606554	19.406 ug/ml
16) T n-Octacosane (C28)	17.202	2565433	19.318 ug/ml
17) T n-Tricontane (C30)	18.088	2534465	19.192 ug/ml
18) T n-Dotriacontane (C32)	18.920	2509403	18.816 ug/ml
19) T n-Tetratriacontane (C34)	19.704	2193255	16.575 ug/ml
20) T n-Hexatriacontane (C36)	20.446	2073764	16.142 ug/ml
21) T n-Octatriacontane (C38)	21.181	2209324	16.860 ug/ml
22) T n-Tetracontane (C40)	22.096	2168436	15.925 ug/ml

(f)=RT Delta > 1/2 Window

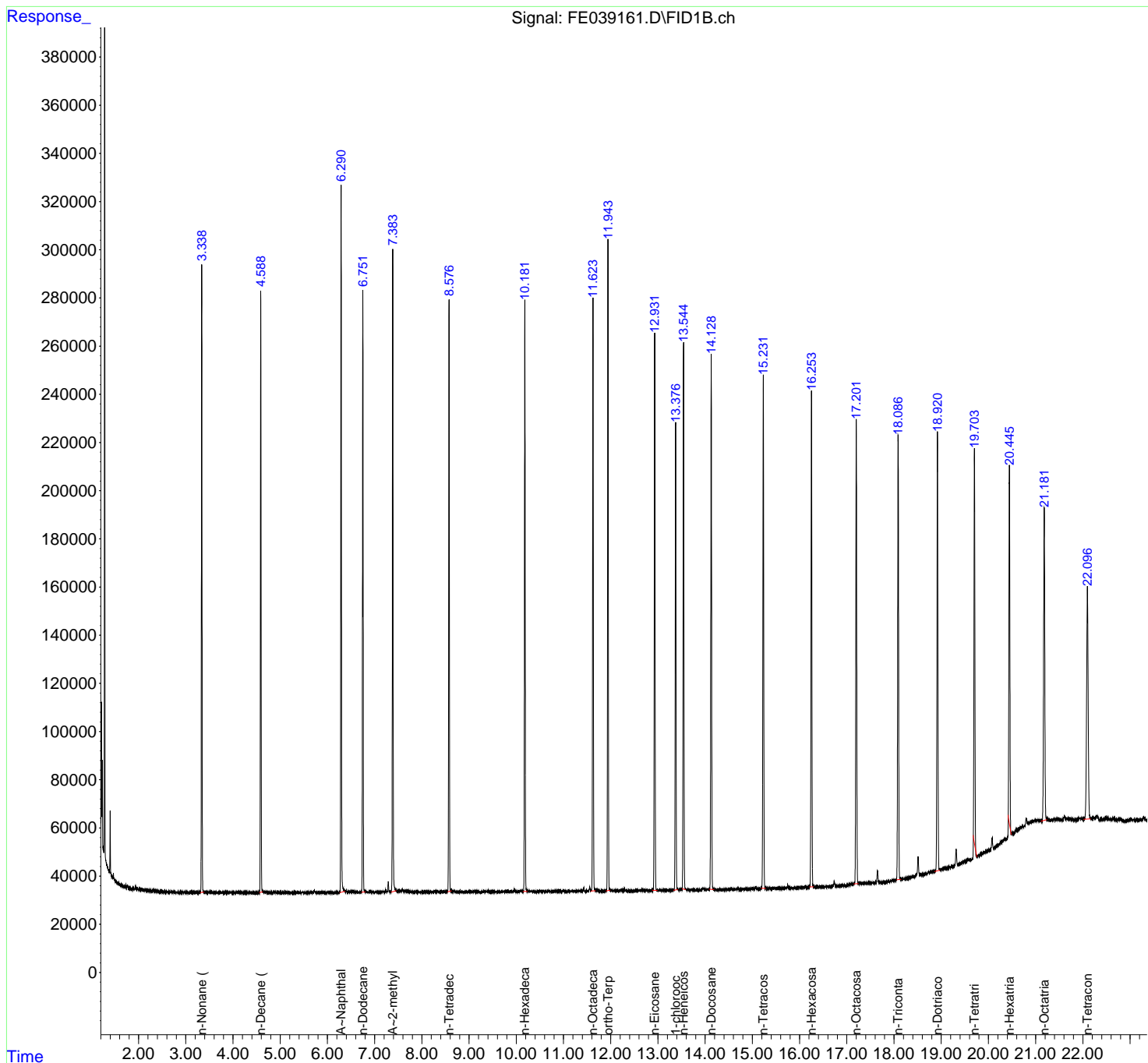
(m)=manual int.

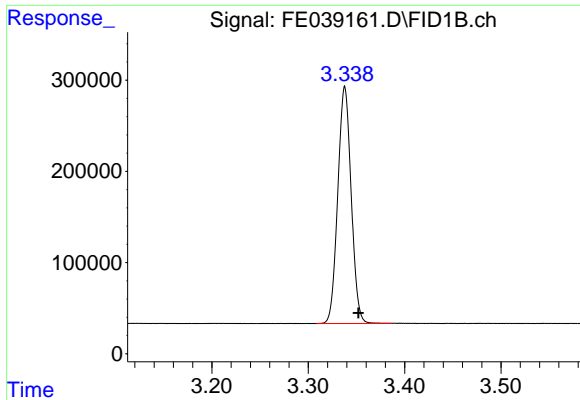
Data Path : Z:\pestpcbsrv\HPCHEM1\FID_E\Data\FE120622AL\
 Data File : FE039161.D
 Signal(s) : FID1B.ch
 Acq On : 06 Dec 2022 19:27
 Operator : YP\AJ
 Sample : 20 PPM ALIPHATIC HC STD
 Misc :
 ALS Vial : 2 Sample Multiplier: 1

Instrument :
 FID_E
 ClientSampleId :

Integration File: autoint1.e
 Quant Time: Dec 07 04:26:14 2022
 Quant Method : Z:\pestpcbsrv\HPCHEM1\FID_E\methods\Aliphatic EPH 111922.M
 Quant Title : GC Extractables
 QLast Update : Sat Nov 19 05:37:37 2022
 Response via : Initial Calibration
 Integrator: ChemStation

Volume Inj. : 1 ul
 Signal Phase : Rxi-1ms
 Signal Info : 20M x 0.18mm x 0.18um

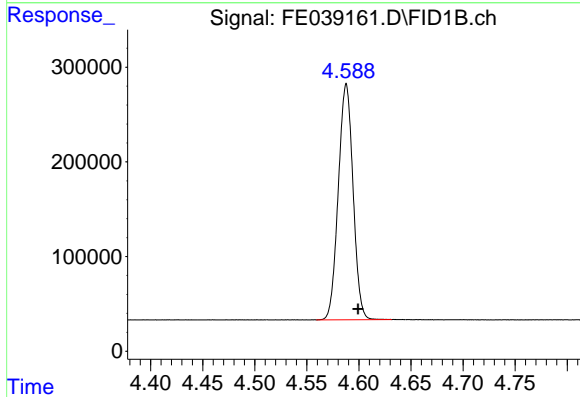




#1 n-Nonane (C9)

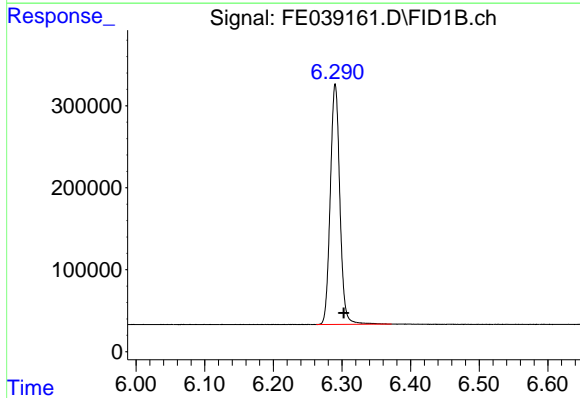
R.T.: 3.338 min
 Delta R.T.: -0.014 min
 Response: 2505308
 Conc: 17.67 ug/ml

Instrument :
 FID_E
 ClientSampleId :



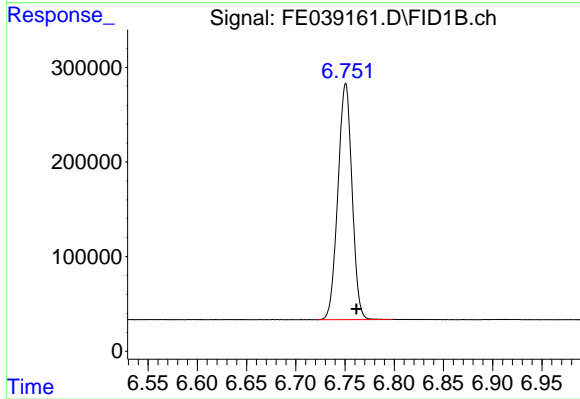
#2 n-Decane (C10)

R.T.: 4.588 min
 Delta R.T.: -0.011 min
 Response: 2454159
 Conc: 17.61 ug/ml



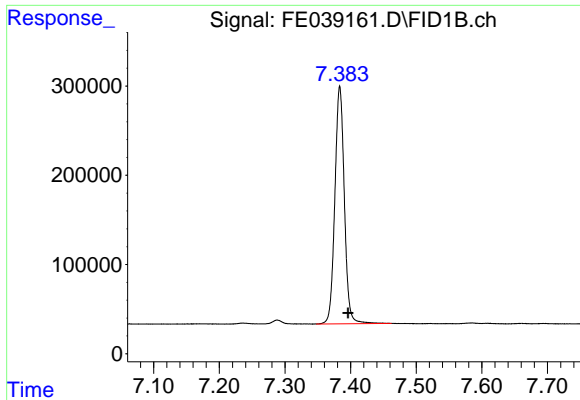
#3 A~Naphthalene (C11.7)

R.T.: 6.290 min
 Delta R.T.: -0.012 min
 Response: 2839790
 Conc: 17.85 ug/ml



#4 n-Dodecane (C12)

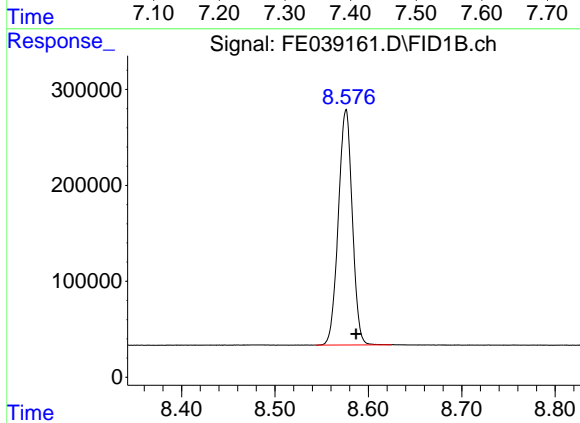
R.T.: 6.751 min
 Delta R.T.: -0.011 min
 Response: 2495216
 Conc: 17.70 ug/ml



#5 A~2-methylnaphthalene (C12.89)

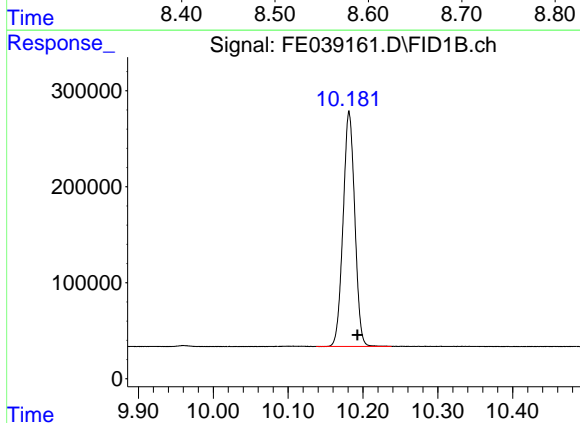
R.T.: 7.384 min
 Delta R.T.: -0.012 min
 Response: 2673700
 Conc: 17.86 ug/ml

Instrument :
 FID_E
 ClientSampleId :



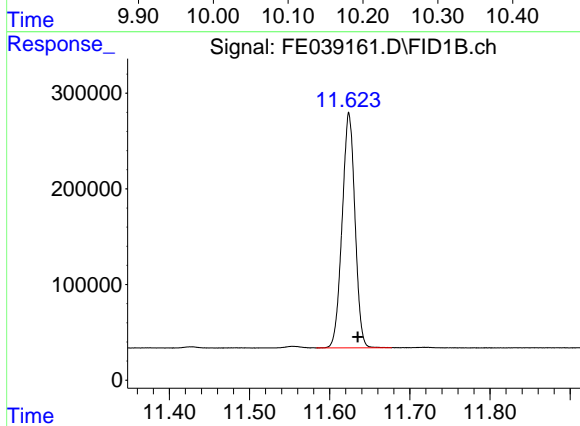
#6 n-Tetradecane (C14)

R.T.: 8.576 min
 Delta R.T.: -0.011 min
 Response: 2545667
 Conc: 17.82 ug/ml



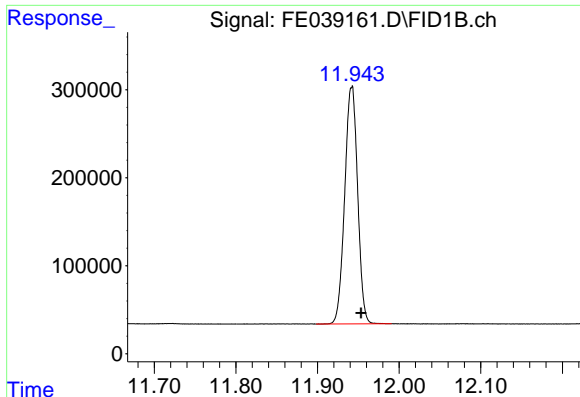
#7 n-Hexadecane (C16)

R.T.: 10.182 min
 Delta R.T.: -0.011 min
 Response: 2657637
 Conc: 18.18 ug/ml



#8 n-Octadecane (C18)

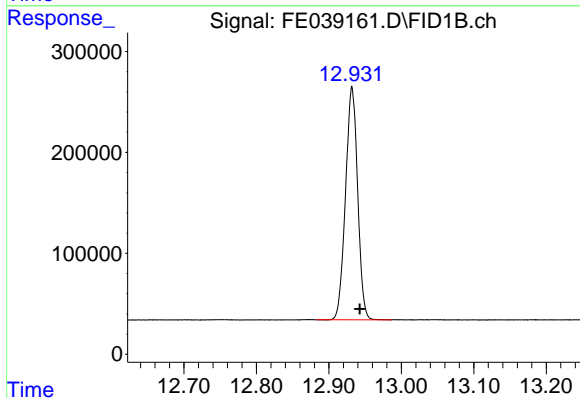
R.T.: 11.624 min
 Delta R.T.: -0.011 min
 Response: 2733094
 Conc: 18.57 ug/ml



#9 ortho-Terphenyl (SURR)

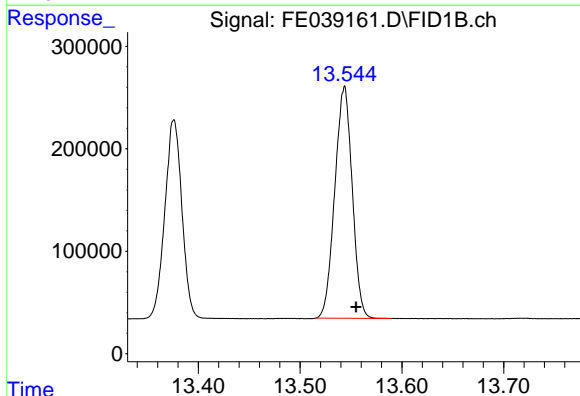
R.T.: 11.942 min
 Delta R.T.: -0.011 min
 Response: 2969308
 Conc: 18.98 ug/ml

Instrument :
 FID_E
 ClientSampleId :



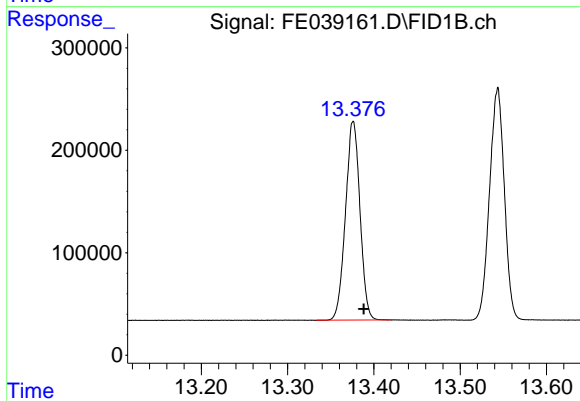
#10 n-Eicosane (C20)

R.T.: 12.932 min
 Delta R.T.: -0.011 min
 Response: 2685706
 Conc: 18.92 ug/ml



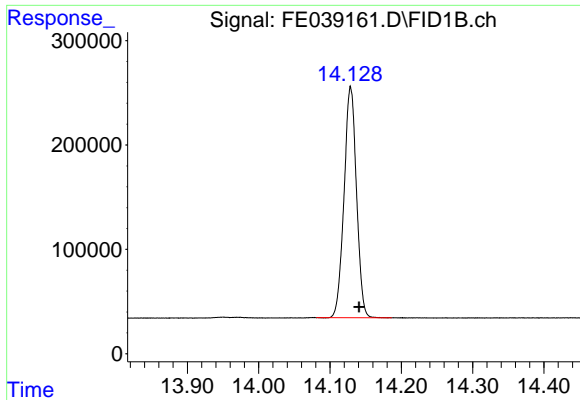
#11 n-Heneicosane (C21)

R.T.: 13.544 min
 Delta R.T.: -0.011 min
 Response: 2690396
 Conc: 18.93 ug/ml



#12 1-chlorooctadecane (SURR)

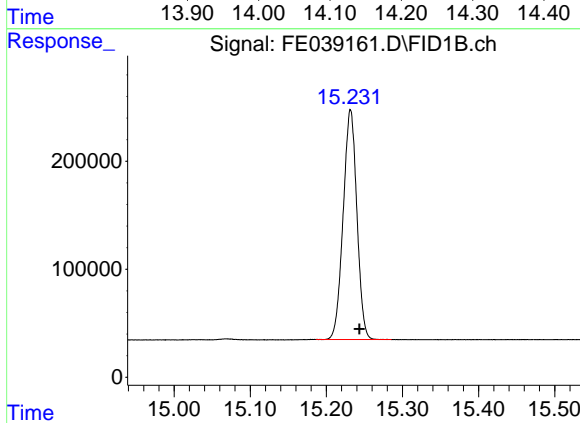
R.T.: 13.376 min
 Delta R.T.: -0.012 min
 Response: 2264443
 Conc: 18.75 ug/ml



#13 n-Docosane (C22)

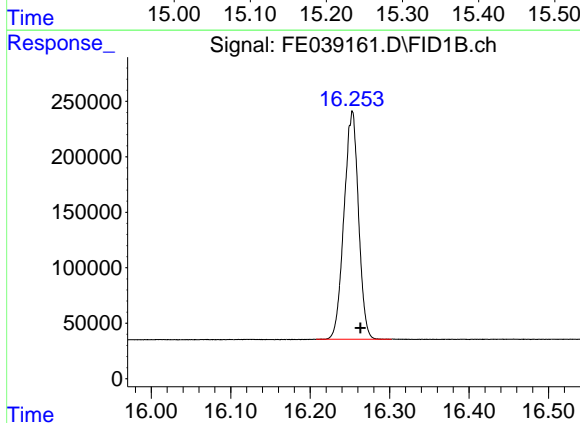
R.T.: 14.129 min
Delta R.T.: -0.012 min
Response: 2677788
Conc: 19.16 ug/ml

Instrument :
FID_E
ClientSampleId :



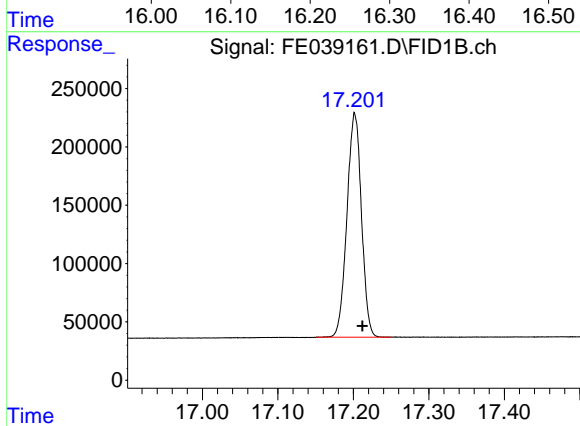
#14 n-Tetracosane (C24)

R.T.: 15.232 min
Delta R.T.: -0.012 min
Response: 2667252
Conc: 19.31 ug/ml



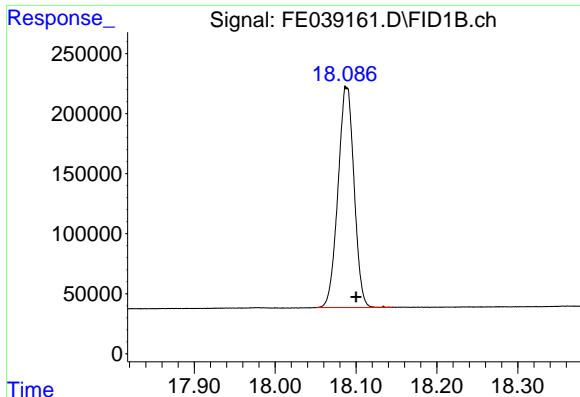
#15 n-Hexacosane (C26)

R.T.: 16.253 min
Delta R.T.: -0.010 min
Response: 2606554
Conc: 19.41 ug/ml



#16 n-Octacosane (C28)

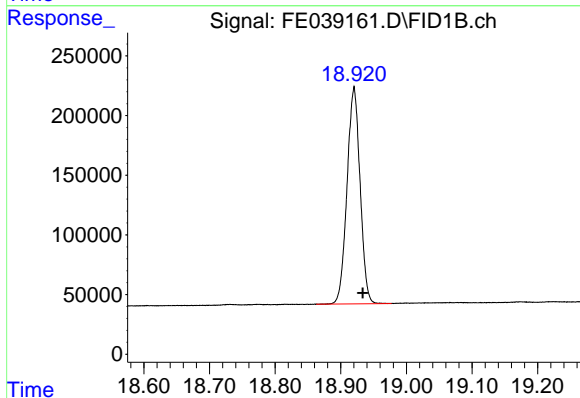
R.T.: 17.202 min
Delta R.T.: -0.010 min
Response: 2565433
Conc: 19.32 ug/ml



#17 n-Tricontane (C30)

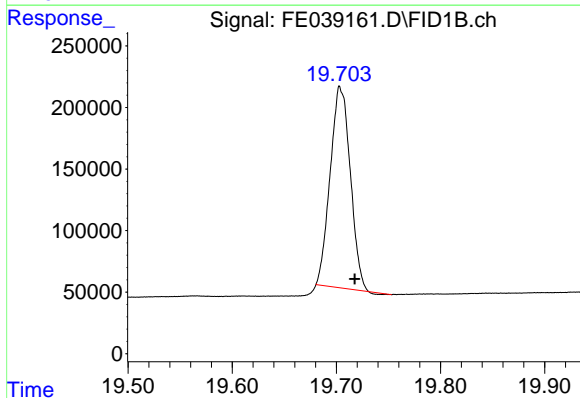
R.T.: 18.088 min
 Delta R.T.: -0.012 min
 Response: 2534465
 Conc: 19.19 ug/ml

Instrument :
 FID_E
 ClientSampleId :



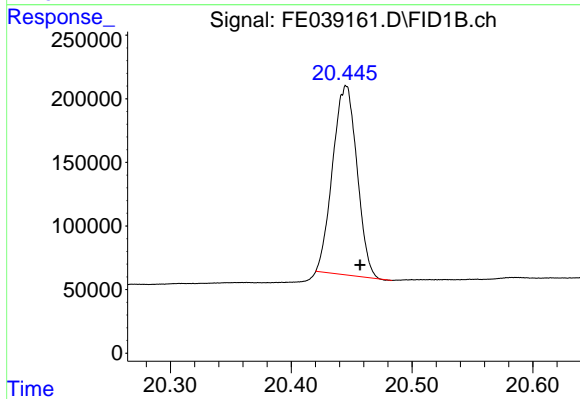
#18 n-Dotriacontane (C32)

R.T.: 18.920 min
 Delta R.T.: -0.013 min
 Response: 2509403
 Conc: 18.82 ug/ml



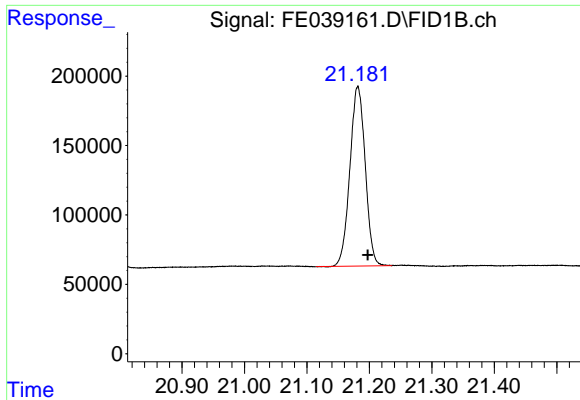
#19 n-Tetratriacontane (C34)

R.T.: 19.704 min
 Delta R.T.: -0.014 min
 Response: 2193255
 Conc: 16.57 ug/ml



#20 n-Hexatriacontane (C36)

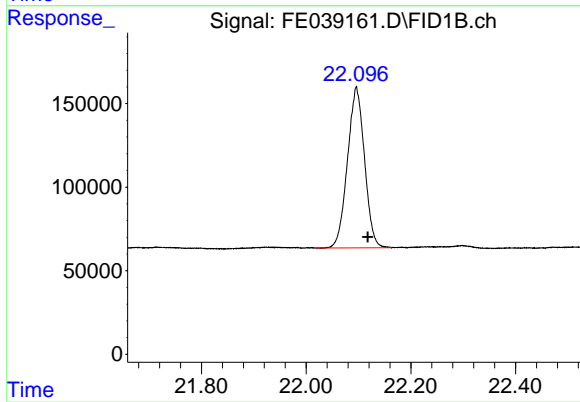
R.T.: 20.446 min
 Delta R.T.: -0.011 min
 Response: 2073764
 Conc: 16.14 ug/ml



#21 n-Octatriacontane (C38)

R.T.: 21.181 min
Delta R.T.: -0.016 min
Response: 2209324
Conc: 16.86 ug/ml

Instrument :
FID_E
ClientSampleId :



#22 n-Tetracontane (C40)

R.T.: 22.096 min
Delta R.T.: -0.022 min
Response: 2168436
Conc: 15.92 ug/ml