

Data Path : Z:\pestpcbsrv\HPCHEM1\FID_E\Data\FE120723AL\
 Data File : FE045701.D
 Signal(s) : FID1B.ch
 Acq On : 07 Dec 2023 07:56
 Operator : YP\AJ
 Sample : 05629-01DL 5X
 Misc :
 ALS Vial : 14 Sample Multiplier: 1

Instrument :
 FID_E
 ClientSampleId :
 VNJ-216DL

Integration File: autoint1.e
 Quant Time: Dec 07 10:13:28 2023
 Quant Method : Z:\pestpcbsrv\HPCHEM1\FID_E\methods\Aliphatic EPH 113023.M
 Quant Title : GC Extractables
 QLast Update : Thu Nov 30 12:25:07 2023
 Response via : Initial Calibration
 Integrator: ChemStation

Volume Inj. : 1 ul
 Signal Phase : Rxi-1ms
 Signal Info : 20M x 0.18mm x 0.18um

Compound	R.T.	Response	Conc Units
System Monitoring Compounds			
9) S ortho-Terphenyl (SURR)	11.857	1969342	9.417 ug/mlm
Spiked Amount	50.000	Recovery =	18.83%
12) S 1-chlorooctadecane (S...	13.302	1881390	11.957 ug/ml
Spiked Amount	50.000	Recovery =	23.91%

Target Compounds

(f)=RT Delta > 1/2 Window

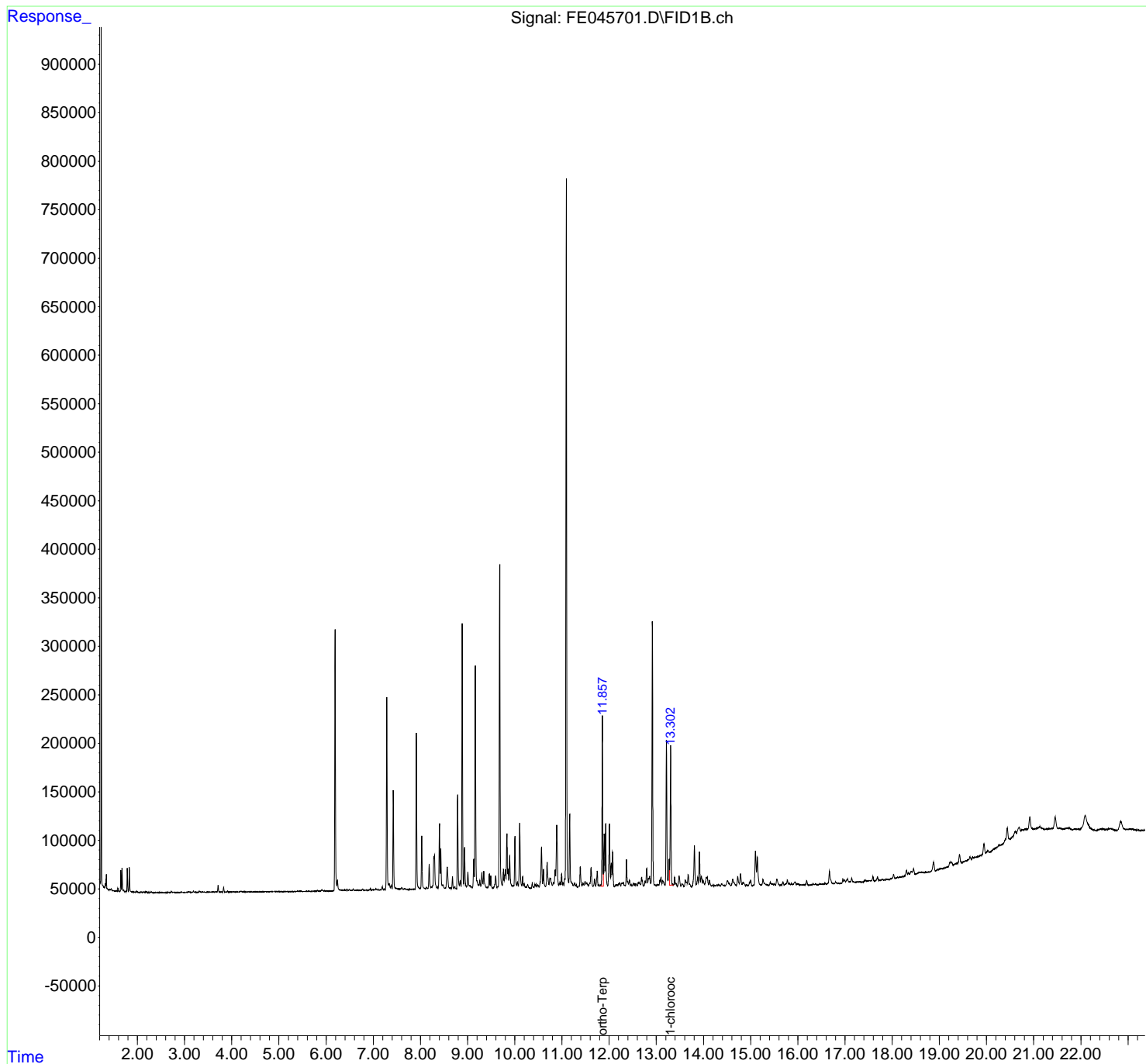
(m)=manual int.

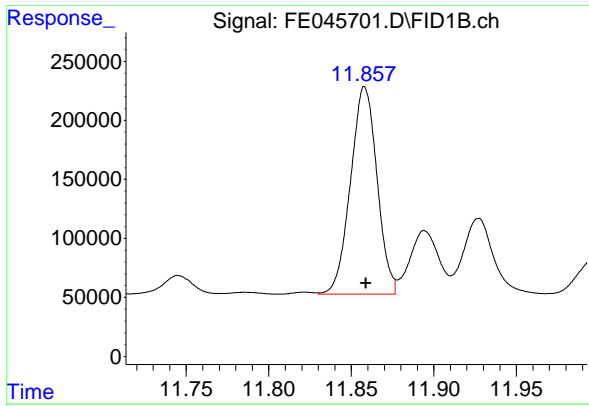
Data Path : Z:\pestpcbsrv\HPCHEM1\FID_E\Data\FE120723AL\
 Data File : FE045701.D
 Signal(s) : FID1B.ch
 Acq On : 07 Dec 2023 07:56
 Operator : YP\AJ
 Sample : 05629-01DL 5X
 Misc :
 ALS Vial : 14 Sample Multiplier: 1

Instrument :
 FID_E
 ClientSampleId :
 VNJ-216DL

Integration File: autoint1.e
 Quant Time: Dec 07 10:13:28 2023
 Quant Method : Z:\pestpcbsrv\HPCHEM1\FID_E\methods\Aliphatic EPH 113023.M
 Quant Title : GC Extractables
 QLast Update : Thu Nov 30 12:25:07 2023
 Response via : Initial Calibration
 Integrator: ChemStation

Volume Inj. : 1 ul
 Signal Phase : Rxi-1ms
 Signal Info : 20M x 0.18mm x 0.18um

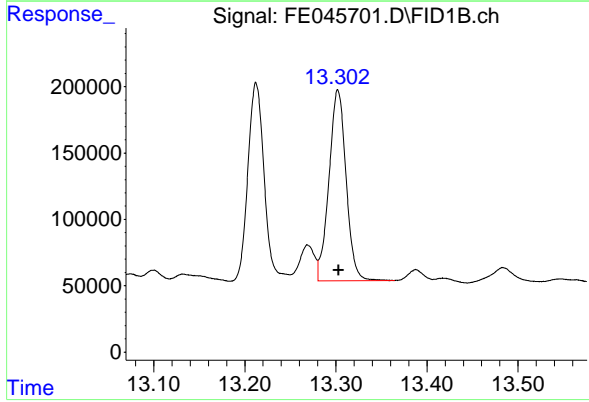




#9 ortho-Terphenyl (SURRE)

R.T.: 11.857 min
Delta R.T.: -0.002 min
Response: 1969342
Conc: 9.42 ug/ml

Instrument :
FID_E
ClientSampleId :
VNJ-216DL



#12 1-chlorooctadecane (SURRE)

R.T.: 13.302 min
Delta R.T.: 0.000 min
Response: 1881390
Conc: 11.96 ug/ml