

Data Path : Z:\pestpcbsrv\HPCHEM1\FID\_E\Data\FE121222AL\  
 Data File : FE039260.D  
 Signal(s) : FID1B.ch  
 Acq On : 12 Dec 2022 22:24  
 Operator : YP\AJ  
 Sample : N5999-01  
 Misc :  
 ALS Vial : 23 Sample Multiplier: 1

Instrument :  
 FID\_E  
 ClientSampleId :  
 MH-20

Integration File: autoint1.e  
 Quant Time: Dec 13 04:43:58 2022  
 Quant Method : Z:\pestpcbsrv\HPCHEM1\FID\_E\methods\Aliphatic EPH 111922.M  
 Quant Title : GC Extractables  
 QLast Update : Sat Nov 19 05:37:37 2022  
 Response via : Initial Calibration  
 Integrator: ChemStation

Volume Inj. : 1 ul  
 Signal Phase : Rxi-1ms  
 Signal Info : 20M x 0.18mm x 0.18um

Compound	R.T.	Response	Conc Units
-----			
System Monitoring Compounds			
9) S ortho-Terphenyl (SURR)	11.938	3245023	20.743 ug/ml
Spiked Amount	50.000	Recovery	= 41.49%
12) S 1-chlorooctadecane (S...	13.374	2551397	21.131 ug/ml
Spiked Amount	50.000	Recovery	= 42.26%

Target Compounds

(f)=RT Delta > 1/2 Window

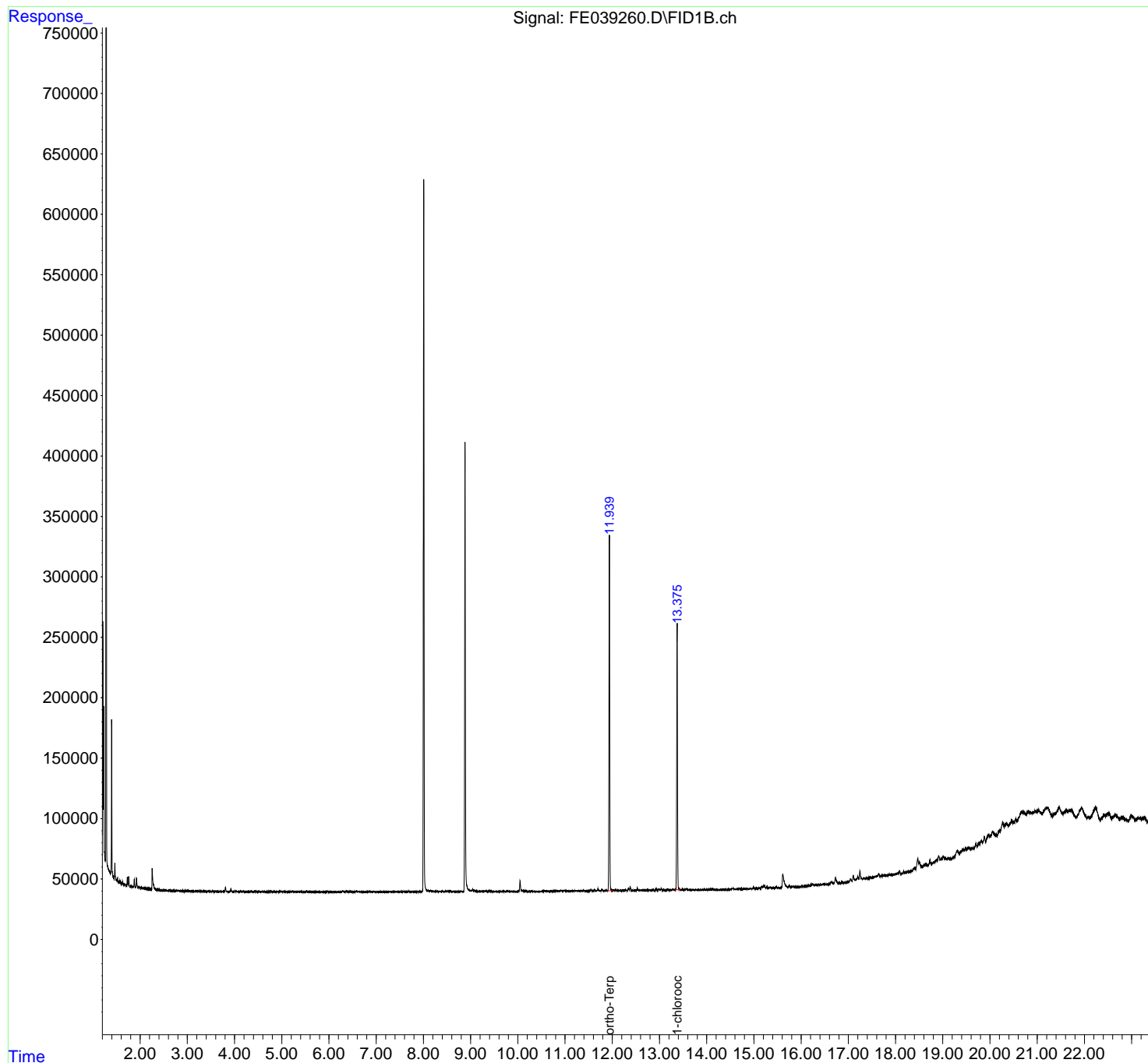
(m)=manual int.

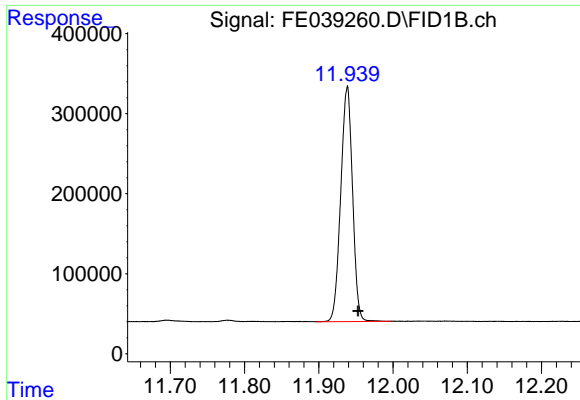
Data Path : Z:\pestpcbsrv\HPCHEM1\FID\_E\Data\FE121222AL\  
Data File : FE039260.D  
Signal(s) : FID1B.ch  
Acq On : 12 Dec 2022 22:24  
Operator : YP\AJ  
Sample : N5999-01  
Misc :  
ALS Vial : 23 Sample Multiplier: 1

Instrument :  
FID\_E  
ClientSampleId :  
MH-20

Integration File: autoint1.e  
Quant Time: Dec 13 04:43:58 2022  
Quant Method : Z:\pestpcbsrv\HPCHEM1\FID\_E\methods\Aliphatic EPH 111922.M  
Quant Title : GC Extractables  
QLast Update : Sat Nov 19 05:37:37 2022  
Response via : Initial Calibration  
Integrator: ChemStation

Volume Inj. : 1 ul  
Signal Phase : Rxi-1ms  
Signal Info : 20M x 0.18mm x 0.18um

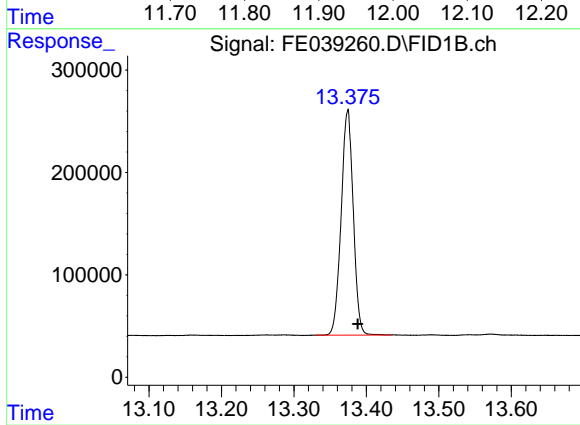




#9 ortho-Terphenyl (SURR)

R.T.: 11.938 min  
Delta R.T.: -0.015 min  
Response: 3245023  
Conc: 20.74 ug/ml

Instrument :  
FID\_E  
ClientSampleId :  
MH-20



#12 1-chlorooctadecane (SURR)

R.T.: 13.374 min  
Delta R.T.: -0.014 min  
Response: 2551397  
Conc: 21.13 ug/ml