

Data Path : Z:\pestpcbsrv\HPCHEM1\FID\_E\Data\FE121321AL\  
 Data File : FE034580.D  
 Signal(s) : FID1B.CH  
 Acq On : 14 Dec 2021 8:38  
 Operator : AJ\MA  
 Sample : M5018-45  
 Misc :  
 ALS Vial : 18 Sample Multiplier: 1

Integration File: autoint1.e  
 Quant Time: Dec 14 10:32:58 2021  
 Quant Method : Z:\pestpcbsrv\HPCHEM1\FID\_E\methods\Aliphatic EPH 121321.M  
 Quant Title : GC Extractables  
 QLast Update : Tue Dec 14 05:59:54 2021  
 Response via : Initial Calibration  
 Integrator: ChemStation 6890 Scale Mode: Large solvent peaks clipped

Volume Inj. : 1 ul  
 Signal Phase : Rxi-1ms  
 Signal Info : 20M x 0.18mm x 0.18um

Compound	R.T.	Response	Conc Units
-----			
System Monitoring Compounds			
9) S ortho-Terphenyl (SURR)	11.640	5762609	47.399 ug/ml
Spiked Amount	50.000	Recovery	= 94.80%
12) S 1-chlorooctadecane (S...	13.066	4588835	47.895 ug/ml
Spiked Amount	50.000	Recovery	= 95.79%

Target Compounds

-----

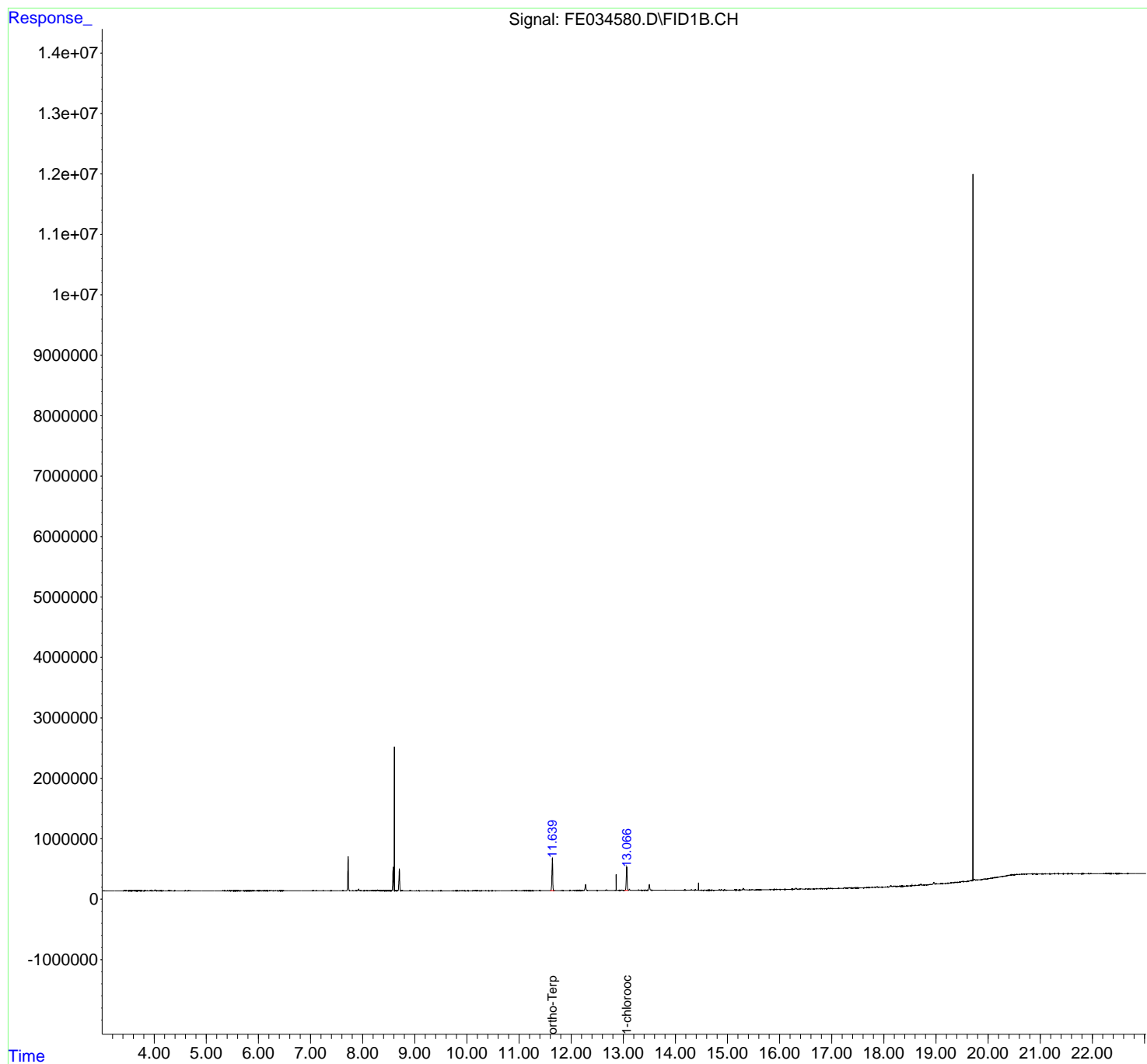
(f)=RT Delta > 1/2 Window

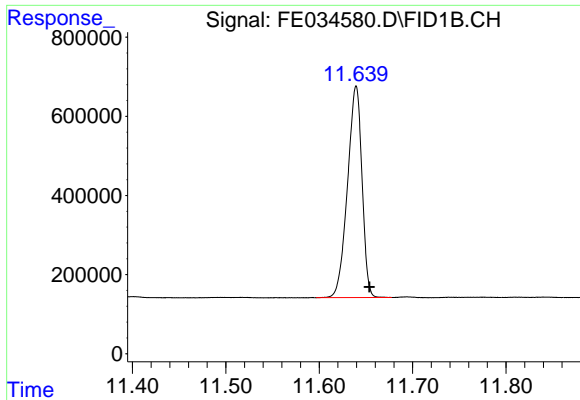
(m)=manual int.

Data Path : Z:\pestpcbsrv\HPCHEM1\FID\_E\Data\FE121321AL\  
 Data File : FE034580.D  
 Signal(s) : FID1B.CH  
 Acq On : 14 Dec 2021 8:38  
 Operator : AJ\MA  
 Sample : M5018-45  
 Misc :  
 ALS Vial : 18 Sample Multiplier: 1

Integration File: autoint1.e  
 Quant Time: Dec 14 10:32:58 2021  
 Quant Method : Z:\pestpcbsrv\HPCHEM1\FID\_E\methods\Aliphatic EPH 121321.M  
 Quant Title : GC Extractables  
 QLast Update : Tue Dec 14 05:59:54 2021  
 Response via : Initial Calibration  
 Integrator: ChemStation 6890 Scale Mode: Large solvent peaks clipped

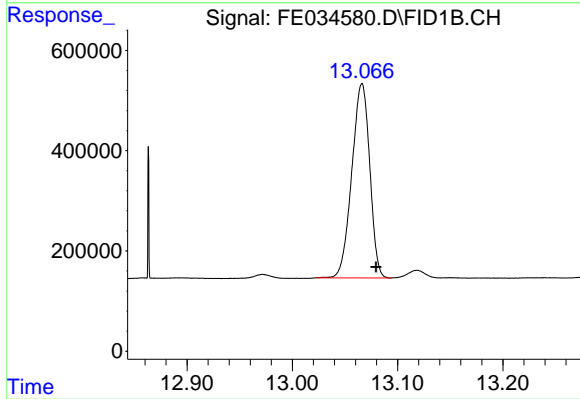
Volume Inj. : 1 ul  
 Signal Phase : Rxi-1ms  
 Signal Info : 20M x 0.18mm x 0.18um





#9 ortho-Terphenyl (SURR)

R.T.: 11.640 min  
Delta R.T.: -0.014 min  
Response: 5762609  
Conc: 47.40 ug/ml



#12 1-chlorooctadecane (SURR)

R.T.: 13.066 min  
Delta R.T.: -0.013 min  
Response: 4588835  
Conc: 47.89 ug/ml