

Data Path : Z:\pestpcbsrv\HPCHEM1\FID_E\Data\FE121622AL\
 Data File : FE039357.D
 Signal(s) : FID1B.ch
 Acq On : 16 Dec 2022 19:41
 Operator : YP\AJ
 Sample : N6086-02
 Misc :
 ALS Vial : 13 Sample Multiplier: 1

Instrument :
 FID_E
 ClientSampleId :

Integration File: autoint1.e
 Quant Time: Dec 17 11:57:39 2022
 Quant Method : Z:\pestpcbsrv\HPCHEM1\FID_E\methods\Aliphatic EPH 111922.M
 Quant Title : GC Extractables
 QLast Update : Sat Nov 19 05:37:37 2022
 Response via : Initial Calibration
 Integrator: ChemStation

Volume Inj. : 1 ul
 Signal Phase : Rxi-1ms
 Signal Info : 20M x 0.18mm x 0.18um

Compound	R.T.	Response	Conc Units

System Monitoring Compounds			
9) S ortho-Terphenyl (SURR)	11.944	3197680	20.440 ug/ml
Spiked Amount	50.000	Recovery	= 40.88%
12) S 1-chlorooctadecane (S...	13.380	2591709	21.465 ug/ml
Spiked Amount	50.000	Recovery	= 42.93%
Target Compounds			
10) T n-Eicosane (C20)	12.997f	47996	0.338 ug/ml
17) T n-Tricontane (C30)	18.096	48792	0.369 ug/ml
18) T n-Dotriacontane (C32)	18.928	90043	0.675 ug/ml
19) T n-Tetratriacontane (C34)	19.714	43314	0.327 ug/ml
21) T n-Octatriacontane (C38)	21.192	219350	1.674 ug/ml

(f)=RT Delta > 1/2 Window

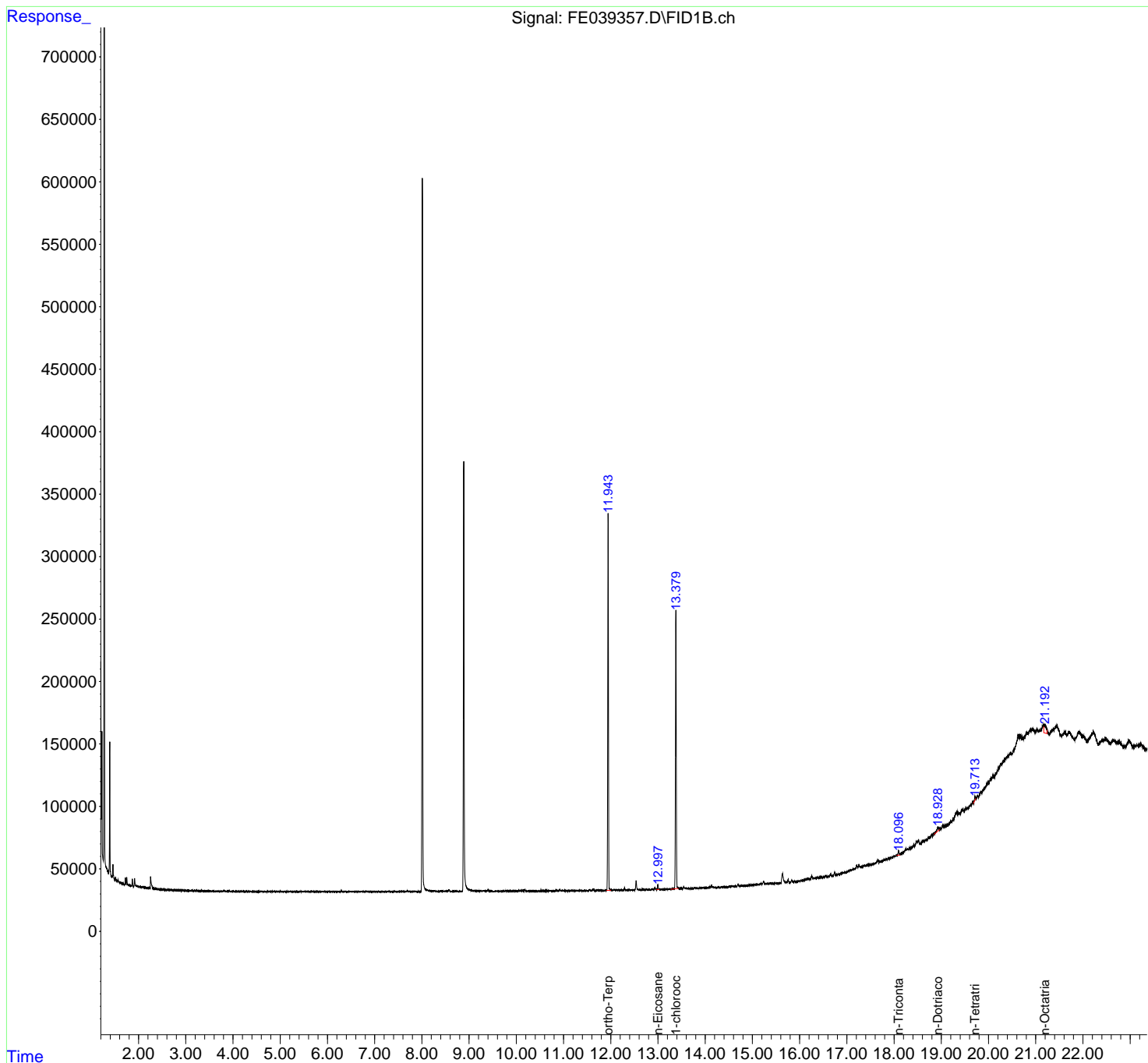
(m)=manual int.

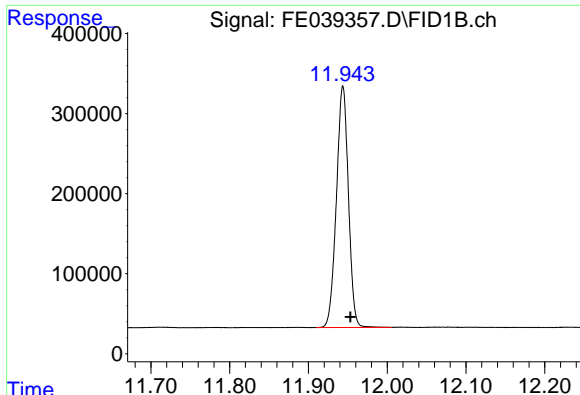
Data Path : Z:\pestpcbsrv\HPCHEM1\FID_E\Data\FE121622AL\
Data File : FE039357.D
Signal(s) : FID1B.ch
Acq On : 16 Dec 2022 19:41
Operator : YP\AJ
Sample : N6086-02
Misc :
ALS Vial : 13 Sample Multiplier: 1

Instrument :
FID_E
ClientSampleId :

Integration File: autoint1.e
Quant Time: Dec 17 11:57:39 2022
Quant Method : Z:\pestpcbsrv\HPCHEM1\FID_E\methods\Aliphatic EPH 111922.M
Quant Title : GC Extractables
QLast Update : Sat Nov 19 05:37:37 2022
Response via : Initial Calibration
Integrator: ChemStation

Volume Inj. : 1 ul
Signal Phase : Rxi-1ms
Signal Info : 20M x 0.18mm x 0.18um

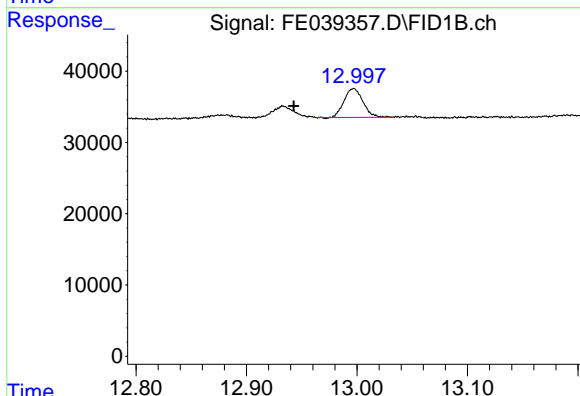




#9 ortho-Terphenyl (SURR)

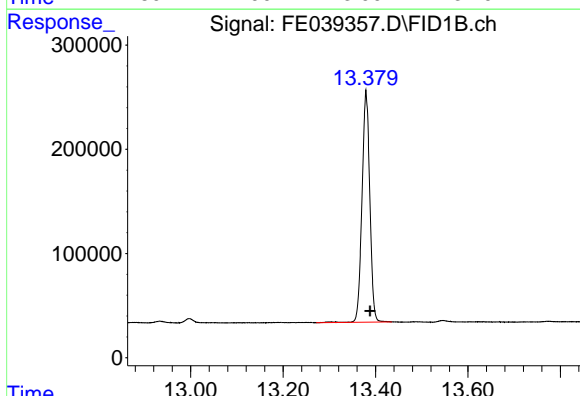
R.T.: 11.944 min
 Delta R.T.: -0.009 min
 Response: 3197680
 Conc: 20.44 ug/ml

Instrument :
 FID_E
 ClientSampleId :



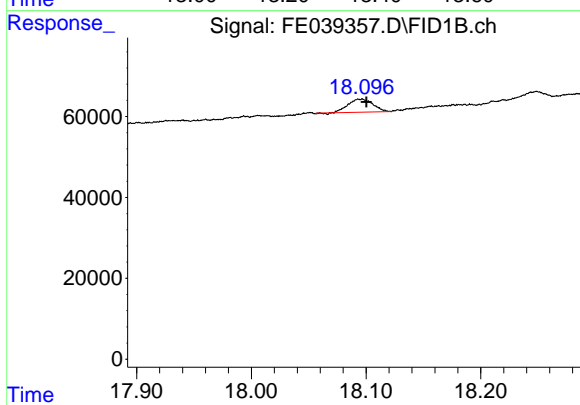
#10 n-Eicosane (C20)

R.T.: 12.997 min
 Delta R.T.: 0.054 min
 Response: 47996
 Conc: 0.34 ug/ml



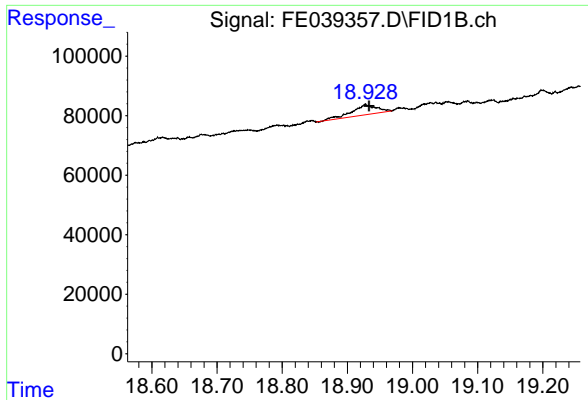
#12 1-chlorooctadecane (SURR)

R.T.: 13.380 min
 Delta R.T.: -0.008 min
 Response: 2591709
 Conc: 21.47 ug/ml



#17 n-Tricontane (C30)

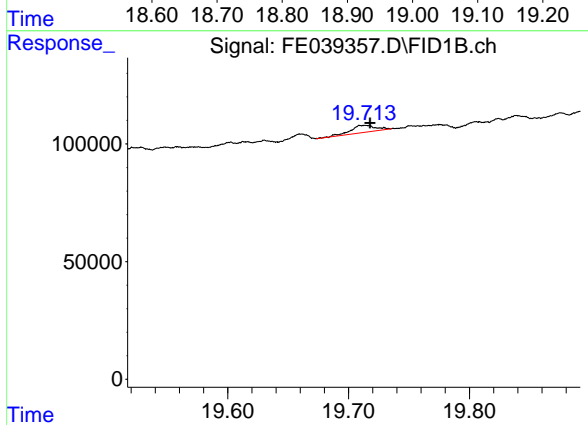
R.T.: 18.096 min
 Delta R.T.: -0.004 min
 Response: 48792
 Conc: 0.37 ug/ml



#18 n-Dotriacontane (C32)

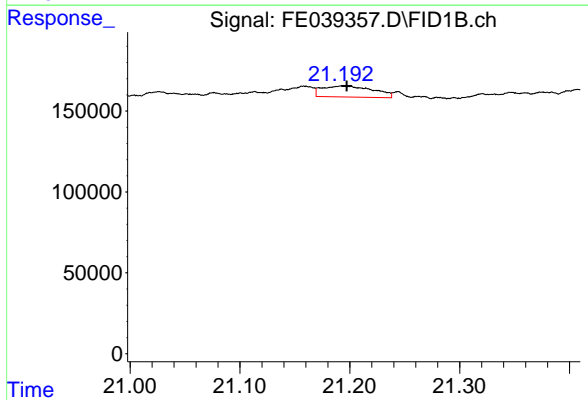
R.T.: 18.928 min
Delta R.T.: -0.006 min
Response: 90043
Conc: 0.68 ug/ml

Instrument :
FID_E
ClientSampleId :



#19 n-Tetraatriacontane (C34)

R.T.: 19.714 min
Delta R.T.: -0.004 min
Response: 43314
Conc: 0.33 ug/ml



#21 n-Octatriacontane (C38)

R.T.: 21.192 min
Delta R.T.: -0.005 min
Response: 219350
Conc: 1.67 ug/ml