

Data Path : Z:\pestpcbsrv\HPCHEM1\FID\_E\Data\FE122123AL\  
 Data File : FE045925.D  
 Signal(s) : FID1B.ch  
 Acq On : 21 Dec 2023 18:33  
 Operator : YP\AJ  
 Sample : 05914-02  
 Misc :  
 ALS Vial : 18 Sample Multiplier: 1

**Instrument :**  
 FID\_E  
**ClientSampleId :**  
 72-12000-E2

**Manual Integrations**  
**APPROVED**

Reviewed By :Yogesh Patel 12/22/2023  
 Supervised By :Ankita Jodhani 12/22/2023

Integration File: sample.E  
 Quant Time: Dec 21 22:31:27 2023  
 Quant Method : Z:\pestpcbsrv\HPCHEM1\FID\_E\methods\Aliphatic EPH 113023.M  
 Quant Title : GC Extractables  
 QLast Update : Thu Nov 30 12:25:07 2023  
 Response via : Initial Calibration  
 Integrator: ChemStation

Volume Inj. : 1 ul  
 Signal Phase : Rxi-1ms  
 Signal Info : 20M x 0.18mm x 0.18um

Compound	R.T.	Response	Conc Units
-----			
System Monitoring Compounds			
9) S ortho-Terphenyl (SURR)	11.838	6796923	32.503 ug/mlm
Spiked Amount	50.000	Recovery	= 65.01%
12) S 1-chlorooctadecane (S...	13.281	5301549	33.694 ug/ml
Spiked Amount	50.000	Recovery	= 67.39%

Target Compounds

-----

(f)=RT Delta > 1/2 Window

(m)=manual int.

Data Path : Z:\pestpcbsrv\HPCHEM1\FID\_E\Data\FE122123AL\  
 Data File : FE045925.D  
 Signal(s) : FID1B.ch  
 Acq On : 21 Dec 2023 18:33  
 Operator : YP\AJ  
 Sample : 05914-02  
 Misc :  
 ALS Vial : 18 Sample Multiplier: 1

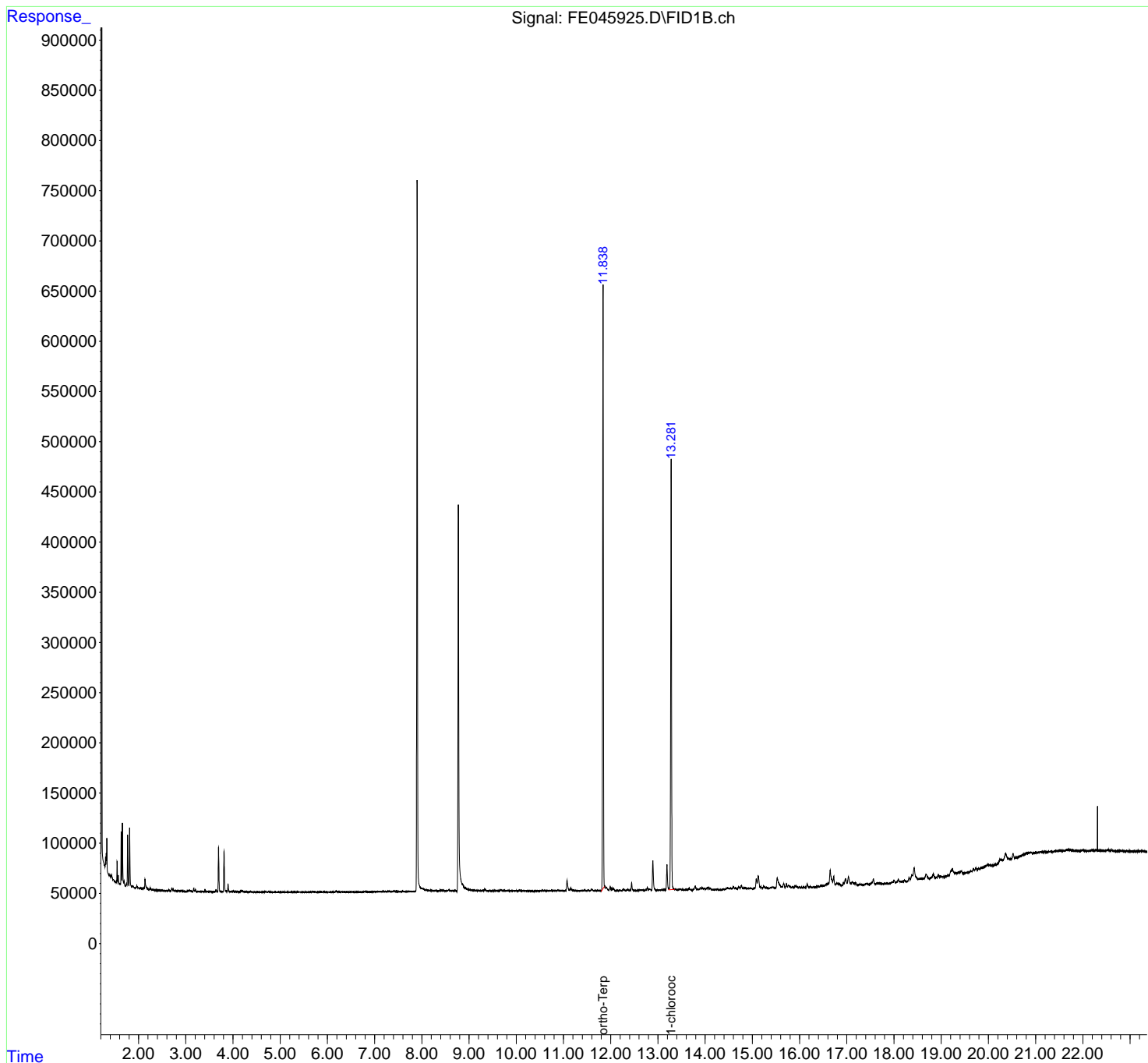
**Instrument :**  
 FID\_E  
**ClientSampleId :**  
 72-12000-E2

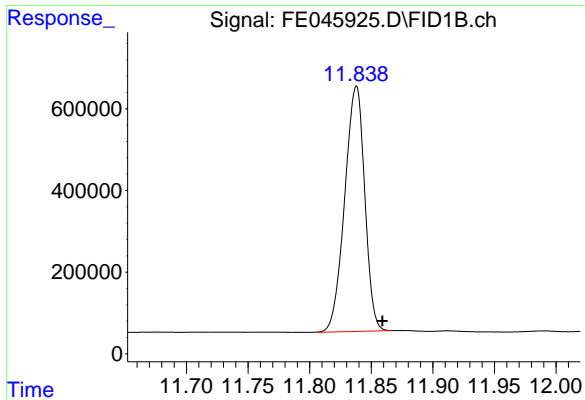
**Manual Integrations**  
**APPROVED**

Reviewed By :Yogesh Patel 12/22/2023  
 Supervised By :Ankita Jodhani 12/22/2023

Integration File: sample.E  
 Quant Time: Dec 21 22:31:27 2023  
 Quant Method : Z:\pestpcbsrv\HPCHEM1\FID\_E\methods\Aliphatic EPH 113023.M  
 Quant Title : GC Extractables  
 QLast Update : Thu Nov 30 12:25:07 2023  
 Response via : Initial Calibration  
 Integrator: ChemStation

Volume Inj. : 1 ul  
 Signal Phase : Rxi-1ms  
 Signal Info : 20M x 0.18mm x 0.18um





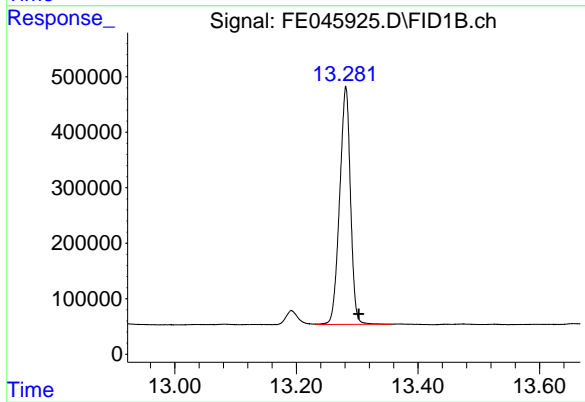
#9 ortho-Terphenyl (SURR)

R.T.: 11.838 min  
Delta R.T.: -0.021 min  
Response: 6796923  
Conc: 32.50 ug/ml

Instrument :  
FID\_E  
ClientSampleId :  
72-12000-E2

Manual Integrations  
APPROVED

Reviewed By :Yogesh Patel 12/22/2023  
Supervised By :Ankita Jodhani 12/22/2023



#12 1-chlorooctadecane (SURR)

R.T.: 13.281 min  
Delta R.T.: -0.021 min  
Response: 5301549  
Conc: 33.69 ug/ml