

Data Path : Z:\pestpcbsrv\HPCHEM1\FID\_E\Data\FE122723AL\  
 Data File : FE045980.D  
 Signal(s) : FID1B.ch  
 Acq On : 27 Dec 2023 12:16  
 Operator : YP\AJ  
 Sample : I.BLK  
 Misc :  
 ALS Vial : 1 Sample Multiplier: 1

Integration File: autoint1.e  
 Quant Time: Dec 28 00:18:00 2023  
 Quant Method : Z:\pestpcbsrv\HPCHEM1\FID\_E\methods\Aliphatic EPH 113023.M  
 Quant Title : GC Extractables  
 QLast Update : Thu Nov 30 12:25:07 2023  
 Response via : Initial Calibration  
 Integrator: ChemStation

Volume Inj. : 1 ul  
 Signal Phase : Rxi-1ms  
 Signal Info : 20M x 0.18mm x 0.18um

Compound	R.T.	Response	Conc Units
-----			
System Monitoring Compounds			
Target Compounds			
10) T n-Eicosane (C20)	12.836	65803	0.380 ug/ml
11) T n-Heneicosane (C21)	13.453	69142	0.402 ug/ml
13) T n-Docosane (C22)	14.042	57698	0.335 ug/ml
18) T n-Dotriacontane (C32)	18.856	63762	0.350 ug/ml
-----			

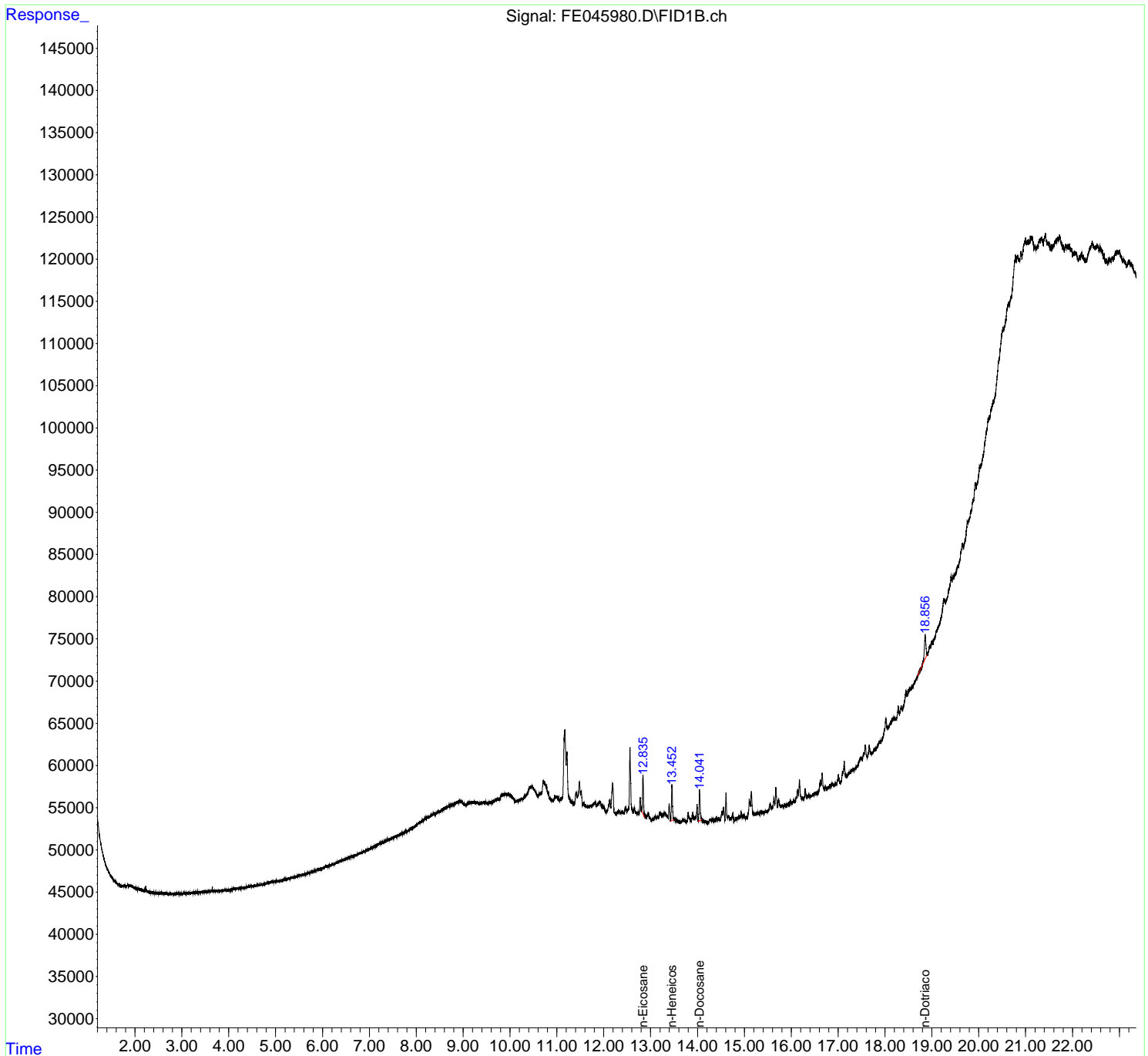
(f)=RT Delta > 1/2 Window

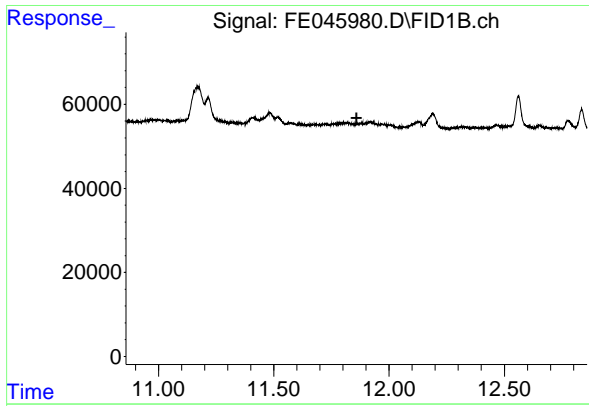
(m)=manual int.

Data Path : Z:\pestpcbsrv\HPCHEM1\FID\_E\Data\FE122723AL\  
 Data File : FE045980.D  
 Signal(s) : FID1B.ch  
 Acq On : 27 Dec 2023 12:16  
 Operator : YP\AJ  
 Sample : I.BLK  
 Misc :  
 ALS Vial : 1 Sample Multiplier: 1

Integration File: autoint1.e  
 Quant Time: Dec 28 00:18:00 2023  
 Quant Method : Z:\pestpcbsrv\HPCHEM1\FID\_E\methods\Aliphatic EPH 113023.M  
 Quant Title : GC Extractables  
 QLast Update : Thu Nov 30 12:25:07 2023  
 Response via : Initial Calibration  
 Integrator: ChemStation

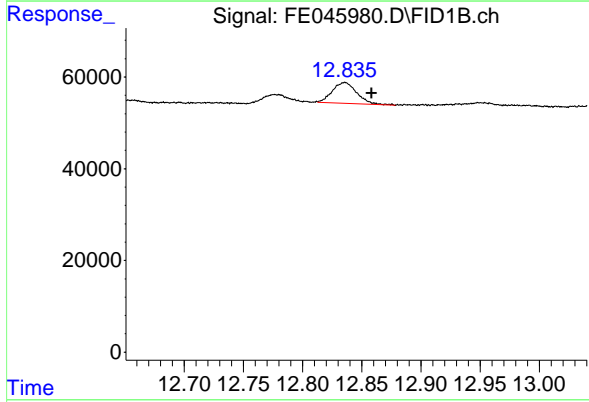
Volume Inj. : 1 ul  
 Signal Phase : Rxi-1ms  
 Signal Info : 20M x 0.18mm x 0.18um





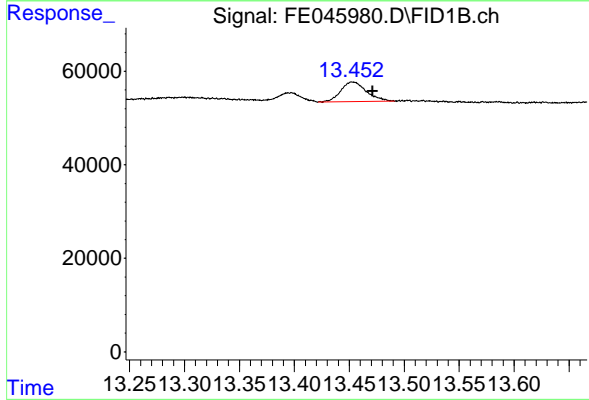
#9 ortho-Terphenyl (SURR)

R.T.: 0.000 min  
 Exp R.T. : 11.859 min  
 Response: 0  
 Conc: N.D.



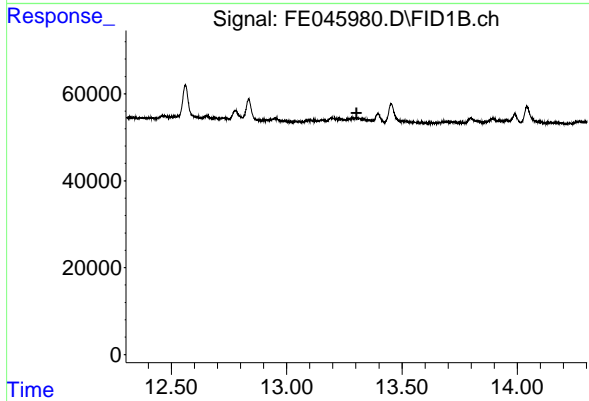
#10 n-Eicosane (C20)

R.T.: 12.836 min  
 Delta R.T.: -0.023 min  
 Response: 65803  
 Conc: 0.38 ug/ml



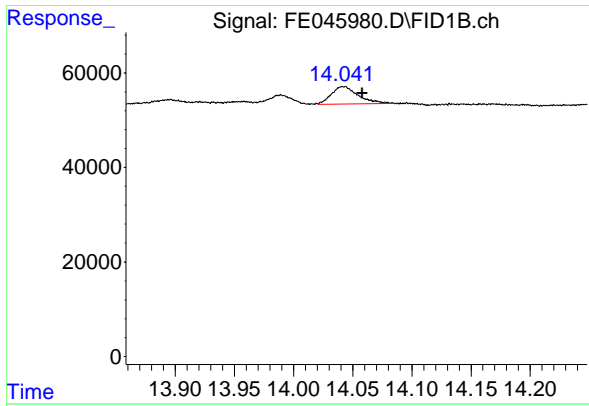
#11 n-Heneicosane (C21)

R.T.: 13.453 min  
 Delta R.T.: -0.018 min  
 Response: 69142  
 Conc: 0.40 ug/ml



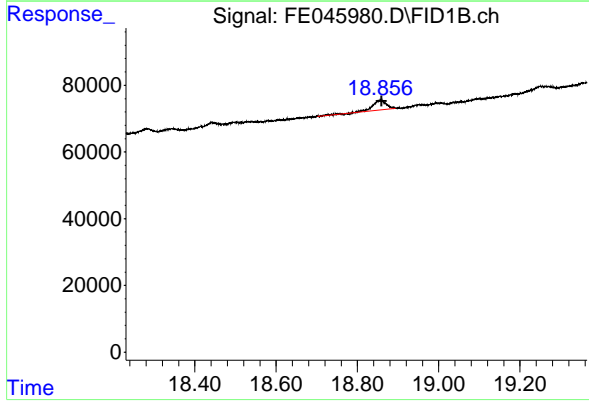
#12 1-chlorooctadecane (SURR)

R.T.: 0.000 min  
 Exp R.T. : 13.303 min  
 Response: 0  
 Conc: N.D.



#13 n-Docosane (C22)

R.T.: 14.042 min  
Delta R.T.: -0.016 min  
Response: 57698  
Conc: 0.33 ug/ml



#18 n-Dotriacontane (C32)

R.T.: 18.856 min  
Delta R.T.: -0.004 min  
Response: 63762  
Conc: 0.35 ug/ml