

Data Path : Z:\pestpcbsrv\HPCHEM1\FID\_E\Data\FE122823AL\  
 Data File : FE046005.D  
 Signal(s) : FID1B.ch  
 Acq On : 28 Dec 2023 15:30  
 Operator : YP\AJ  
 Sample : PB158127BSD  
 Misc :  
 ALS Vial : 16 Sample Multiplier: 1

**Instrument :**  
 FID\_E  
**ClientSampleId :**  
 PB158127BSD

**Manual Integrations**  
**APPROVED**  
 Reviewed By :Yogesh Patel 12/29/2023  
 Supervised By :Ankita Jodhani 12/29/2023

Integration File: autoint1.e  
 Quant Time: Dec 28 23:51:52 2023  
 Quant Method : Z:\pestpcbsrv\HPCHEM1\FID\_E\methods\Aliphatic EPH 113023.M  
 Quant Title : GC Extractables  
 QLast Update : Thu Nov 30 12:25:07 2023  
 Response via : Initial Calibration  
 Integrator: ChemStation

Volume Inj. : 1 ul  
 Signal Phase : Rxi-1ms  
 Signal Info : 20M x 0.18mm x 0.18um

Compound	R.T.	Response	Conc Units
-----			
System Monitoring Compounds			
9) S ortho-Terphenyl (SURR)	11.840	7136146	34.125 ug/ml
Spiked Amount	50.000	Recovery =	68.25%
12) S 1-chlorooctadecane (S...	13.282	5536472	35.187 ug/ml
Spiked Amount	50.000	Recovery =	70.37%
Target Compounds			
1) T n-Nonane (C9)	3.242	8584638	54.136 ug/ml
2) T n-Decane (C10)	4.485	9286346	57.991 ug/ml
3) T A~Naphthalene (C11.7)	6.180	10621097	60.973 ug/ml
4) T n-Dodecane (C12)	6.645	9825308	60.827 ug/ml
5) T A~2-methylnaphthalene...	7.275	10404812	61.270 ug/ml
6) T n-Tetradecane (C14)	8.473	9930164	61.900 ug/ml
7) T n-Hexadecane (C16)	10.081	9901156	59.792 ug/ml
8) T n-Octadecane (C18)	11.528	9919968	57.859 ug/ml
10) T n-Eicosane (C20)	12.840	9834634	56.841 ug/ml
11) T n-Heneicosane (C21)	13.453	9319621	54.174 ug/ml
13) T n-Docosane (C22)	14.040	9195570	53.332 ug/ml
14) T n-Tetracosane (C24)	15.142	18370120	105.225 ug/ml
15) T n-Hexacosane (C26)	16.172	8672094	49.796 ug/ml
16) T n-Octacosane (C28)	17.121	9049089	52.357 ug/ml
17) T n-Tricontane (C30)	18.014	8505181	48.616 ug/ml
18) T n-Dotriacontane (C32)	18.849	8627678	47.292 ug/ml
19) T n-Tetratriacontane (C34)	19.636	8413080	50.702 ug/ml
20) T n-Hexatriacontane (C36)	20.379	8530752	53.741 ug/ml
21) T n-Octatriacontane (C38)	21.111	8847006	56.415 ug/mlm
22) T n-Tetracontane (C40)	22.017	9327615	65.634 ug/ml

(f)=RT Delta > 1/2 Window

(m)=manual int.

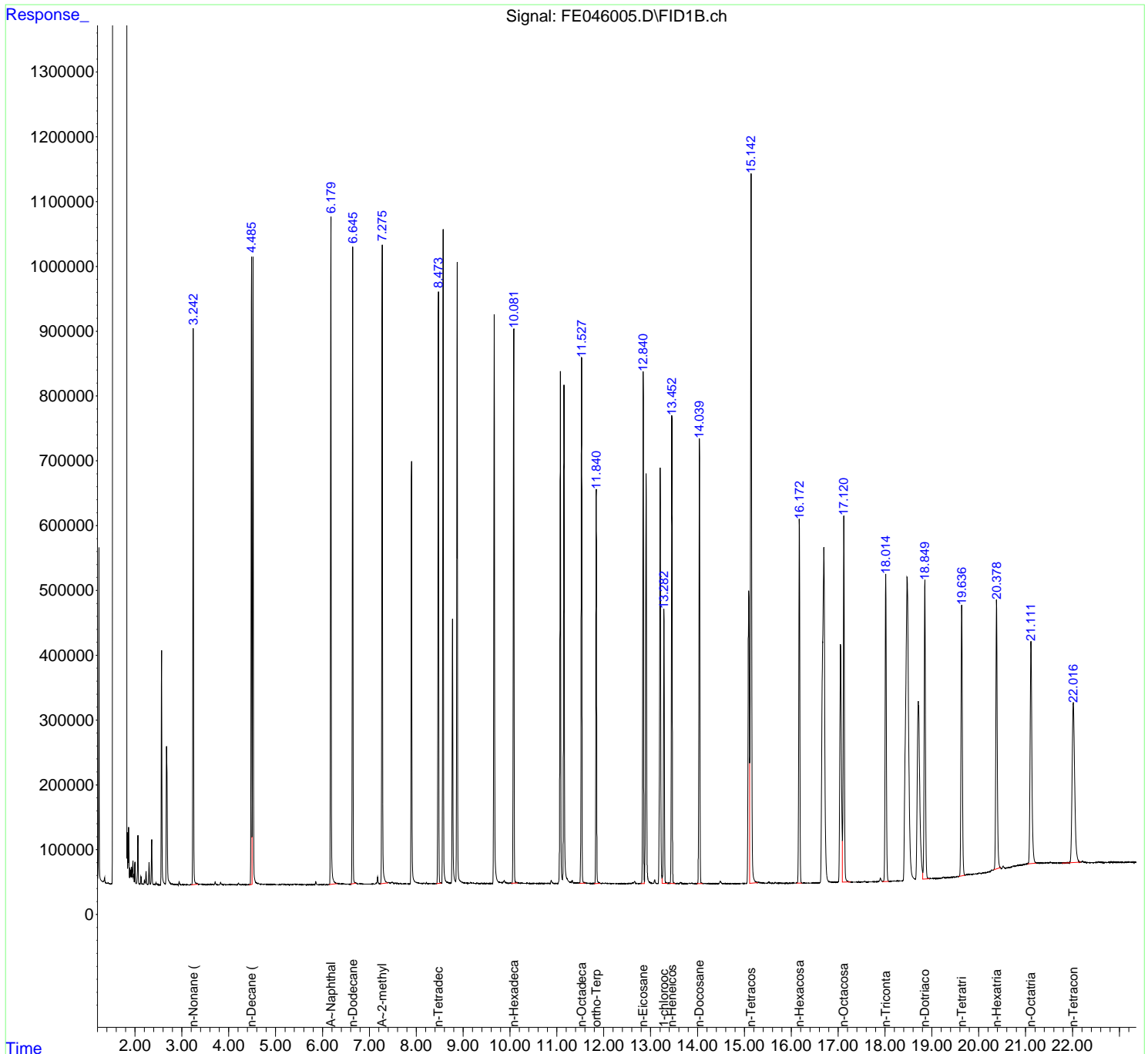
Data Path : Z:\pestpcbsrv\HPCHEM1\FID\_E\Data\FE122823AL\  
 Data File : FE046005.D  
 Signal(s) : FID1B.ch  
 Acq On : 28 Dec 2023 15:30  
 Operator : YP\AJ  
 Sample : PB158127BSD  
 Misc :  
 ALS Vial : 16 Sample Multiplier: 1

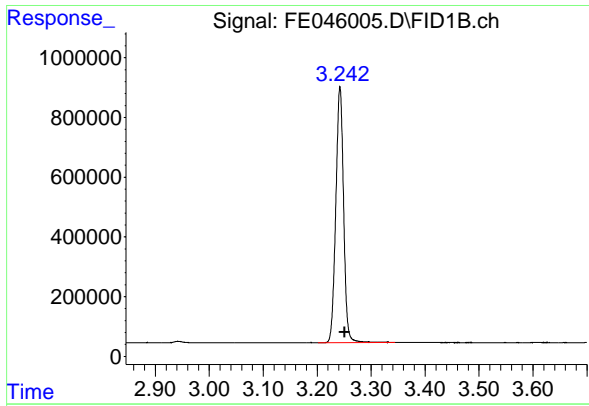
**Instrument :**  
 FID\_E  
**ClientSampleId :**  
 PB158127BSD

**Manual Integrations**  
**APPROVED**  
 Reviewed By :Yogesh Patel 12/29/2023  
 Supervised By :Ankita Jodhani 12/29/2023

Integration File: autoint1.e  
 Quant Time: Dec 28 23:51:52 2023  
 Quant Method : Z:\pestpcbsrv\HPCHEM1\FID\_E\methods\Aliphatic EPH 113023.M  
 Quant Title : GC Extractables  
 QLast Update : Thu Nov 30 12:25:07 2023  
 Response via : Initial Calibration  
 Integrator: ChemStation

Volume Inj. : 1 ul  
 Signal Phase : Rxi-1ms  
 Signal Info : 20M x 0.18mm x 0.18um





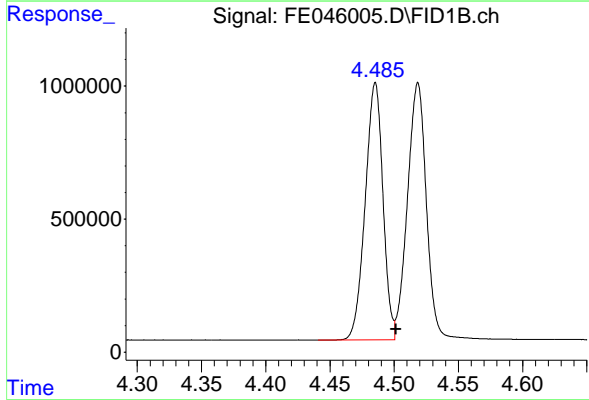
#1 n-Nonane (C9)

R.T.: 3.242 min  
 Delta R.T.: -0.009 min  
 Response: 8584638  
 Conc: 54.14 ug/ml

Instrument : FID\_E  
 Client Sample Id : PB158127BSD

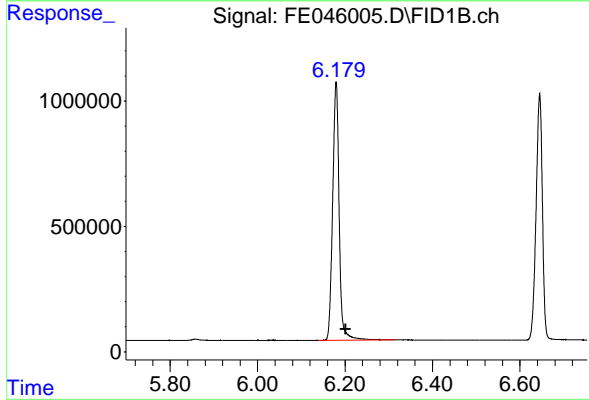
Manual Integrations  
 APPROVED

Reviewed By :Yogesh Patel 12/29/2023  
 Supervised By :Ankita Jodhani 12/29/2023



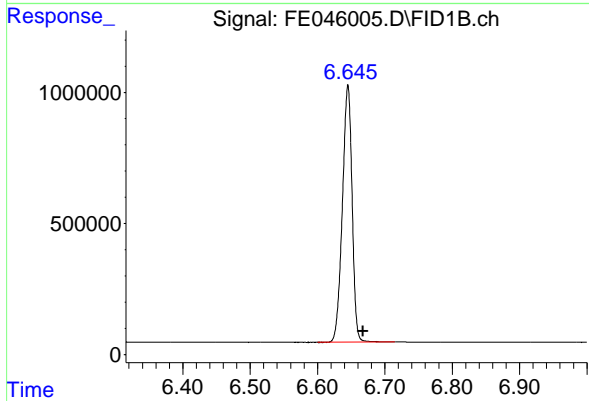
#2 n-Decane (C10)

R.T.: 4.485 min  
 Delta R.T.: -0.016 min  
 Response: 9286346  
 Conc: 57.99 ug/ml



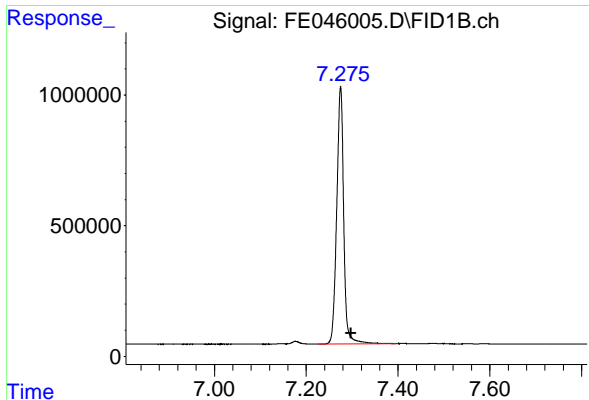
#3 A~Naphthalene (C11.7)

R.T.: 6.180 min  
 Delta R.T.: -0.022 min  
 Response: 10621097  
 Conc: 60.97 ug/ml



#4 n-Dodecane (C12)

R.T.: 6.645 min  
 Delta R.T.: -0.022 min  
 Response: 9825308  
 Conc: 60.83 ug/ml



#5 A~2-methylnaphthalene (C12.89)

R.T.: 7.275 min  
 Delta R.T.: -0.022 min  
 Response: 10404812  
 Conc: 61.27 ug/ml

Instrument :

FID\_E

Client Sample Id :

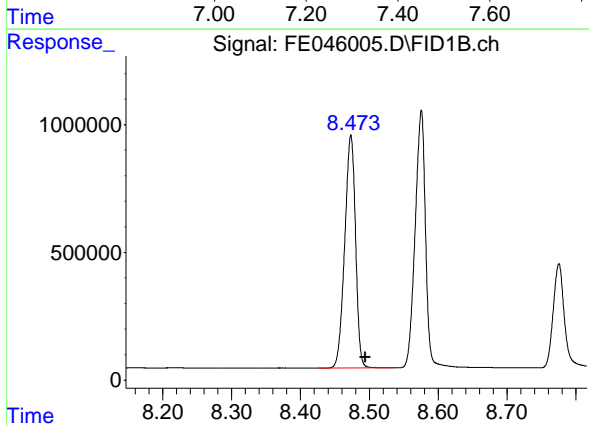
PB158127BSD

Manual Integrations

APPROVED

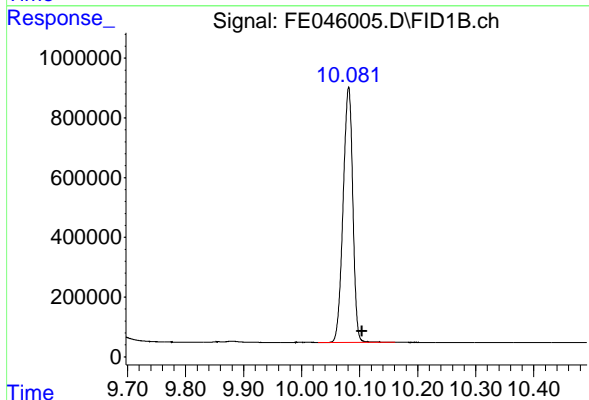
Reviewed By :Yogesh Patel 12/29/2023

Supervised By :Ankita Jodhani 12/29/2023



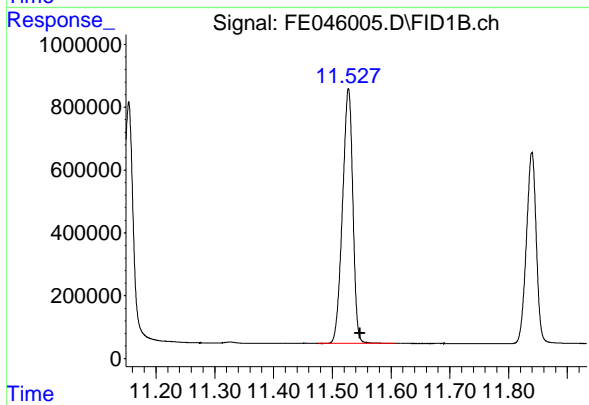
#6 n-Tetradecane (C14)

R.T.: 8.473 min  
 Delta R.T.: -0.021 min  
 Response: 9930164  
 Conc: 61.90 ug/ml



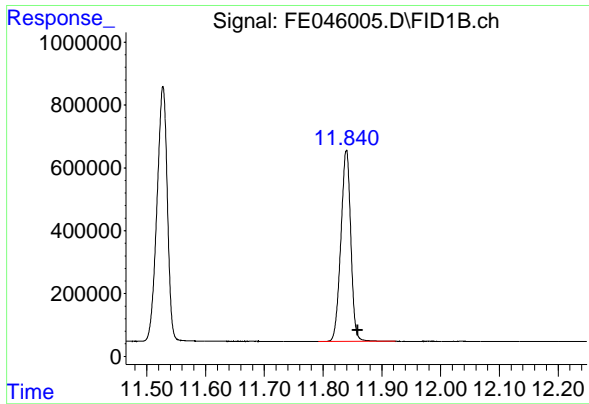
#7 n-Hexadecane (C16)

R.T.: 10.081 min  
 Delta R.T.: -0.023 min  
 Response: 9901156  
 Conc: 59.79 ug/ml



#8 n-Octadecane (C18)

R.T.: 11.528 min  
 Delta R.T.: -0.020 min  
 Response: 9919968  
 Conc: 57.86 ug/ml



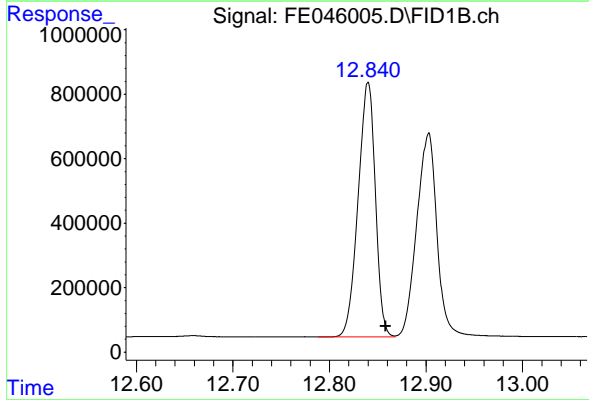
#9 ortho-Terphenyl (SURR)

R.T.: 11.840 min  
 Delta R.T.: -0.019 min  
 Response: 7136146  
 Conc: 34.13 ug/ml

Instrument : FID\_E  
 Client Sample Id : PB158127BSD

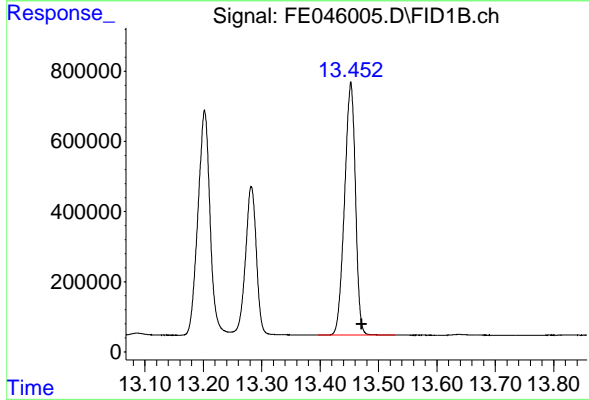
Manual Integrations  
 APPROVED

Reviewed By :Yogesh Patel 12/29/2023  
 Supervised By :Ankita Jodhani 12/29/2023



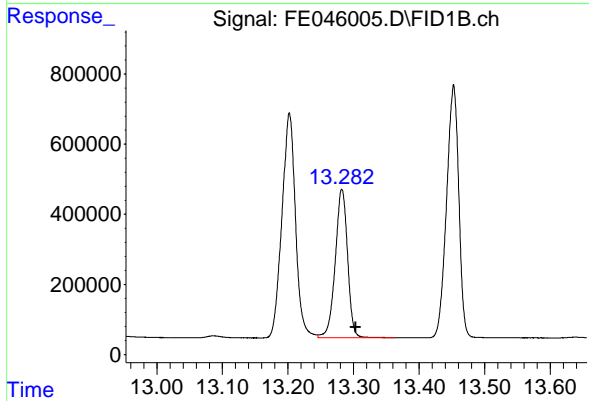
#10 n-Eicosane (C20)

R.T.: 12.840 min  
 Delta R.T.: -0.018 min  
 Response: 9834634  
 Conc: 56.84 ug/ml



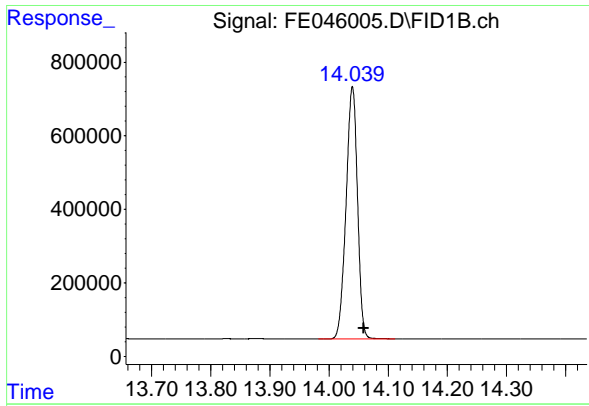
#11 n-Heneicosane (C21)

R.T.: 13.453 min  
 Delta R.T.: -0.018 min  
 Response: 9319621  
 Conc: 54.17 ug/ml



#12 1-chlorooctadecane (SURR)

R.T.: 13.282 min  
 Delta R.T.: -0.021 min  
 Response: 5536472  
 Conc: 35.19 ug/ml



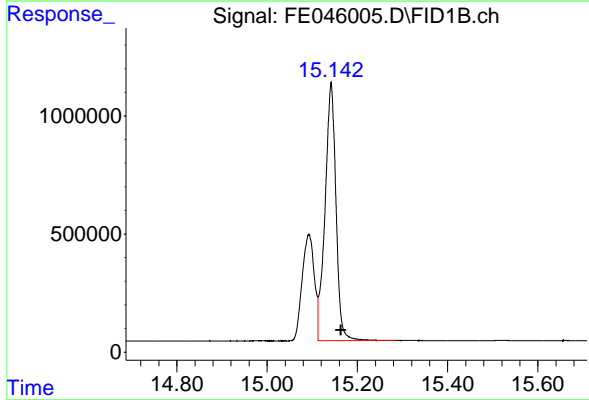
#13 n-Docosane (C22)

R.T.: 14.040 min  
Delta R.T.: -0.019 min  
Response: 9195570  
Conc: 53.33 ug/ml

Instrument :  
FID\_E  
Client Sample Id :  
PB158127BSD

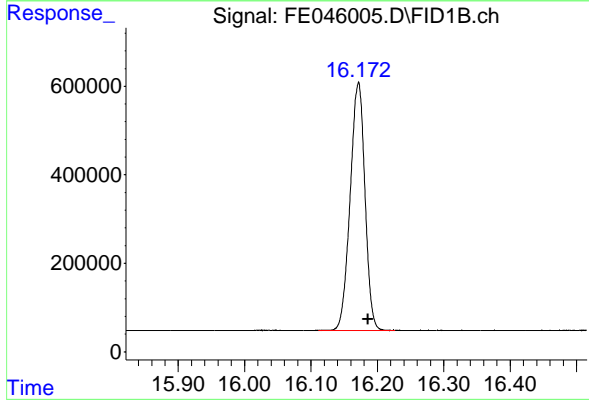
Manual Integrations  
APPROVED

Reviewed By :Yogesh Patel 12/29/2023  
Supervised By :Ankita Jodhani 12/29/2023



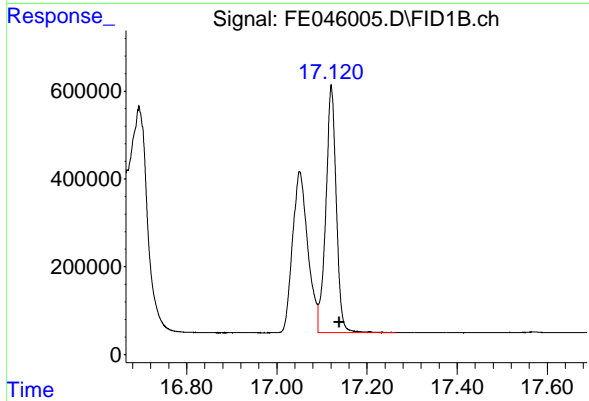
#14 n-Tetracosane (C24)

R.T.: 15.142 min  
Delta R.T.: -0.022 min  
Response: 18370120  
Conc: 105.22 ug/ml



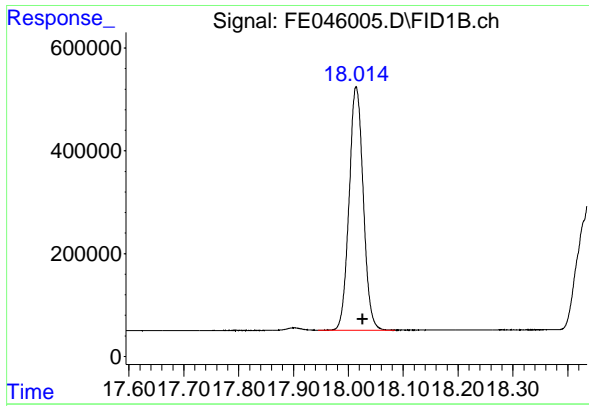
#15 n-Hexacosane (C26)

R.T.: 16.172 min  
Delta R.T.: -0.014 min  
Response: 8672094  
Conc: 49.80 ug/ml



#16 n-Octacosane (C28)

R.T.: 17.121 min  
Delta R.T.: -0.018 min  
Response: 9049089  
Conc: 52.36 ug/ml



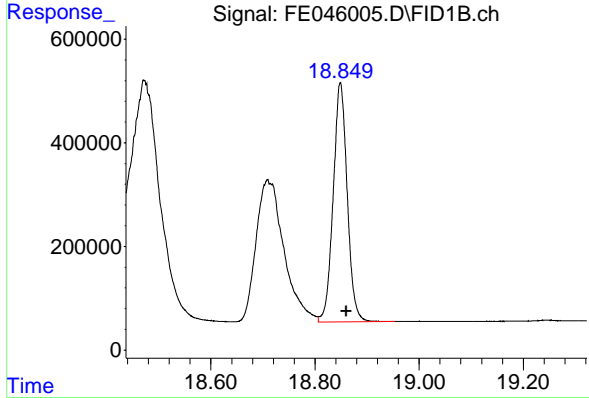
#17 n-Tricontane (C30)

R.T.: 18.014 min  
 Delta R.T.: -0.012 min  
 Response: 8505181  
 Conc: 48.62 ug/ml

Instrument : FID\_E  
 Client Sample Id : PB158127BSD

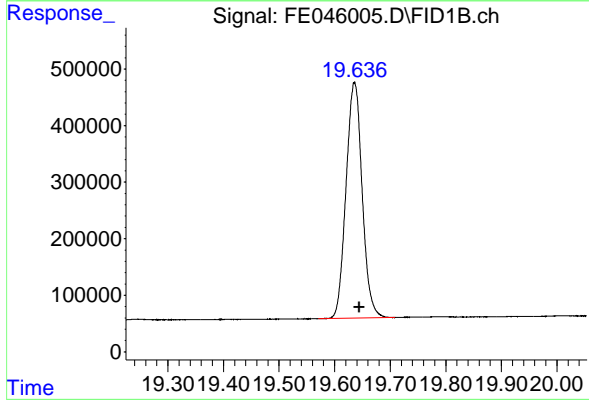
Manual Integrations  
 APPROVED

Reviewed By :Yogesh Patel 12/29/2023  
 Supervised By :Ankita Jodhani 12/29/2023



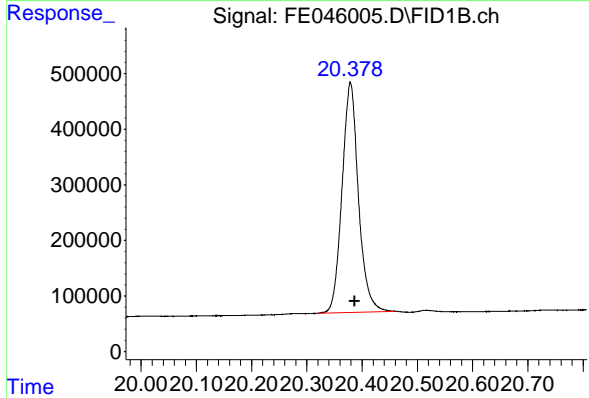
#18 n-Dotriacontane (C32)

R.T.: 18.849 min  
 Delta R.T.: -0.011 min  
 Response: 8627678  
 Conc: 47.29 ug/ml



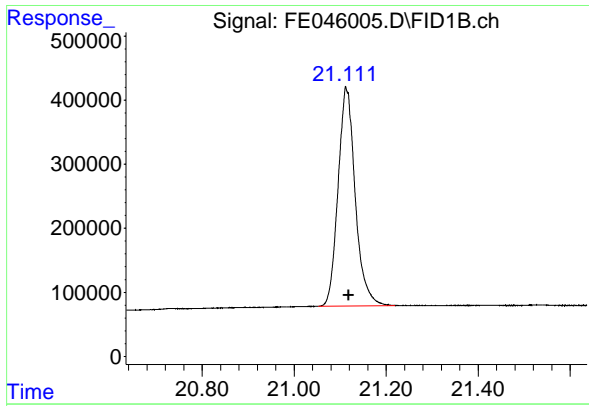
#19 n-Tetraatriacontane (C34)

R.T.: 19.636 min  
 Delta R.T.: -0.009 min  
 Response: 8413080  
 Conc: 50.70 ug/ml



#20 n-Hexatriacontane (C36)

R.T.: 20.379 min  
 Delta R.T.: -0.007 min  
 Response: 8530752  
 Conc: 53.74 ug/ml



#21 n-Octatriacontane (C38)

R.T.: 21.111 min  
 Delta R.T.: -0.008 min  
 Response: 8847006  
 Conc: 56.42 ug/ml

Instrument :

FID\_E

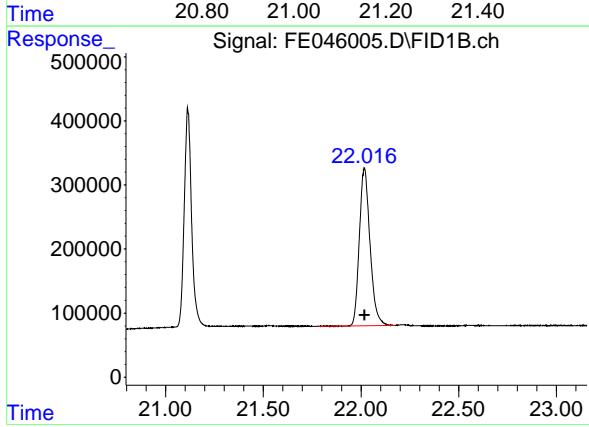
Client Sample Id :

PB158127BSD

Manual Integrations

APPROVED

Reviewed By :Yogesh Patel 12/29/2023  
 Supervised By :Ankita Jodhani 12/29/2023



#22 n-Tetracontane (C40)

R.T.: 22.017 min  
 Delta R.T.: -0.002 min  
 Response: 9327615  
 Conc: 65.63 ug/ml