

Data Path : Z:\pestpcbsrv\HPCHEM1\FID_E\Data\FE122823AL\
 Data File : FE046010.D
 Signal(s) : FID1B.ch
 Acq On : 28 Dec 2023 18:01
 Operator : YP\AJ
 Sample : 06035-01
 Misc :
 ALS Vial : 21 Sample Multiplier: 1

Instrument :
 FID_E
ClientSampleId :
 TR-5-122723

Integration File: autoint1.e
 Quant Time: Dec 28 23:52:55 2023
 Quant Method : Z:\pestpcbsrv\HPCHEM1\FID_E\methods\Aliphatic EPH 113023.M
 Quant Title : GC Extractables
 QLast Update : Thu Nov 30 12:25:07 2023
 Response via : Initial Calibration
 Integrator: ChemStation

Volume Inj. : 1 ul
 Signal Phase : Rxi-1ms
 Signal Info : 20M x 0.18mm x 0.18um

Compound	R.T.	Response	Conc Units

System Monitoring Compounds			
9) S ortho-Terphenyl (SURR)	11.841	5462394	26.121 ug/ml
Spiked Amount	50.000	Recovery	= 52.24%
12) S 1-chlorooctadecane (S...	13.292	49912421	317.215 ug/ml
Spiked Amount	50.000	Recovery	= 634.43%

Target Compounds

(f)=RT Delta > 1/2 Window

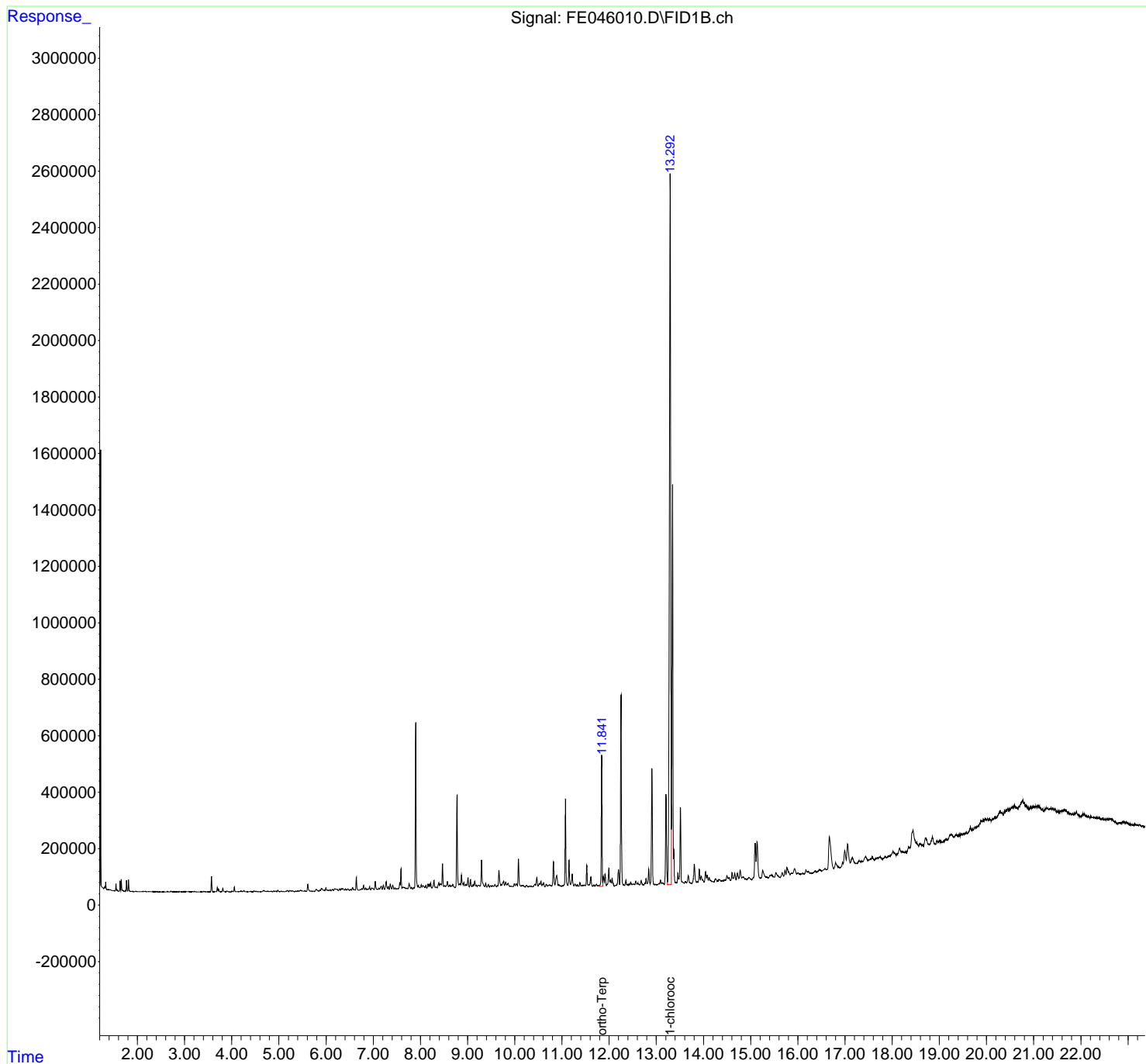
(m)=manual int.

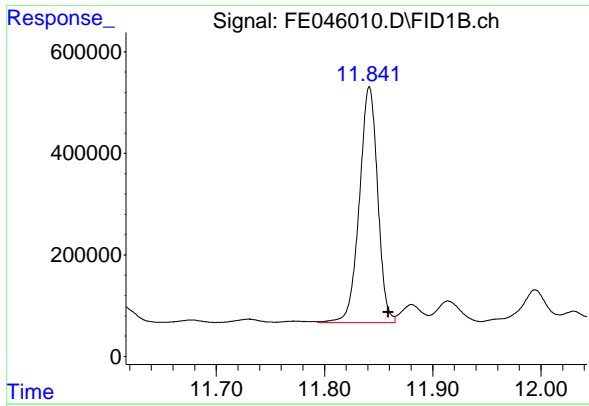
Data Path : Z:\pestpcbsrv\HPCHEM1\FID_E\Data\FE122823AL\
 Data File : FE046010.D
 Signal(s) : FID1B.ch
 Acq On : 28 Dec 2023 18:01
 Operator : YP\AJ
 Sample : 06035-01
 Misc :
 ALS Vial : 21 Sample Multiplier: 1

Instrument :
 FID_E
 ClientSampleId :
 TR-5-122723

Integration File: autoint1.e
 Quant Time: Dec 28 23:52:55 2023
 Quant Method : Z:\pestpcbsrv\HPCHEM1\FID_E\methods\Aliphatic EPH 113023.M
 Quant Title : GC Extractables
 QLast Update : Thu Nov 30 12:25:07 2023
 Response via : Initial Calibration
 Integrator: ChemStation

Volume Inj. : 1 ul
 Signal Phase : Rxi-1ms
 Signal Info : 20M x 0.18mm x 0.18um

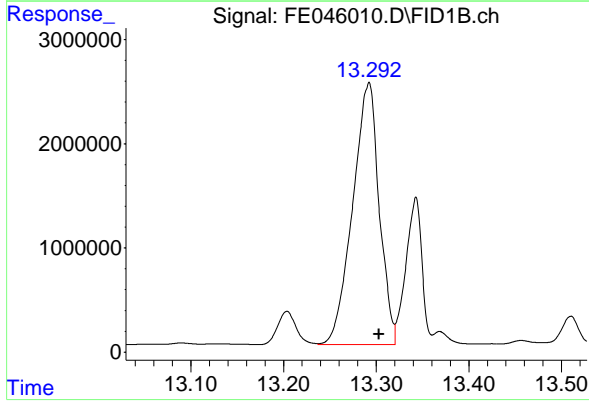




#9 ortho-Terphenyl (SURR)

R.T.: 11.841 min
Delta R.T.: -0.018 min
Response: 5462394
Conc: 26.12 ug/ml

Instrument :
FID_E
ClientSampleId :
TR-5-122723



#12 1-chlorooctadecane (SURR)

R.T.: 13.292 min
Delta R.T.: -0.011 min
Response: 49912421
Conc: 317.22 ug/ml