

Data Path : Z:\pestpcbsrv\HPCHEM1\FID_E\Data\FE122922AL\
 Data File : FE039555.D
 Signal(s) : FID1B.ch
 Acq On : 29 Dec 2022 18:16
 Operator : YP\AJ
 Sample : N6228-06
 Misc :
 ALS Vial : 14 Sample Multiplier: 1

Instrument :
 FID_E
ClientSampleId :
 TP-2-EPH-2

Manual Integrations
APPROVED

Reviewed By :Yogesh Patel 12/30/2022
 Supervised By :Ankita Jodhani 12/30/2022

Integration File: autoint1.e
 Quant Time: Dec 30 05:26:17 2022
 Quant Method : Z:\pestpcbsrv\HPCHEM1\FID_E\methods\Aliphatic EPH 121722.M
 Quant Title : GC Extractables
 QLast Update : Sat Dec 17 15:09:52 2022
 Response via : Initial Calibration
 Integrator: ChemStation

Volume Inj. : 1 ul
 Signal Phase : Rxi-1ms
 Signal Info : 20M x 0.18mm x 0.18um

Compound	R.T.	Response	Conc Units

System Monitoring Compounds			
9) S ortho-Terphenyl (SURR)	11.929	3830271	25.666 ug/mlm
Spiked Amount	50.000	Recovery	= 51.33%
12) S 1-chlorooctadecane (S...	13.365	3176721	27.600 ug/ml
Spiked Amount	50.000	Recovery	= 55.20%

Target Compounds

(f)=RT Delta > 1/2 Window

(m)=manual int.

Data Path : Z:\pestpcbsrv\HPCHEM1\FID_E\Data\FE122922AL\
 Data File : FE039555.D
 Signal(s) : FID1B.ch
 Acq On : 29 Dec 2022 18:16
 Operator : YP\AJ
 Sample : N6228-06
 Misc :
 ALS Vial : 14 Sample Multiplier: 1

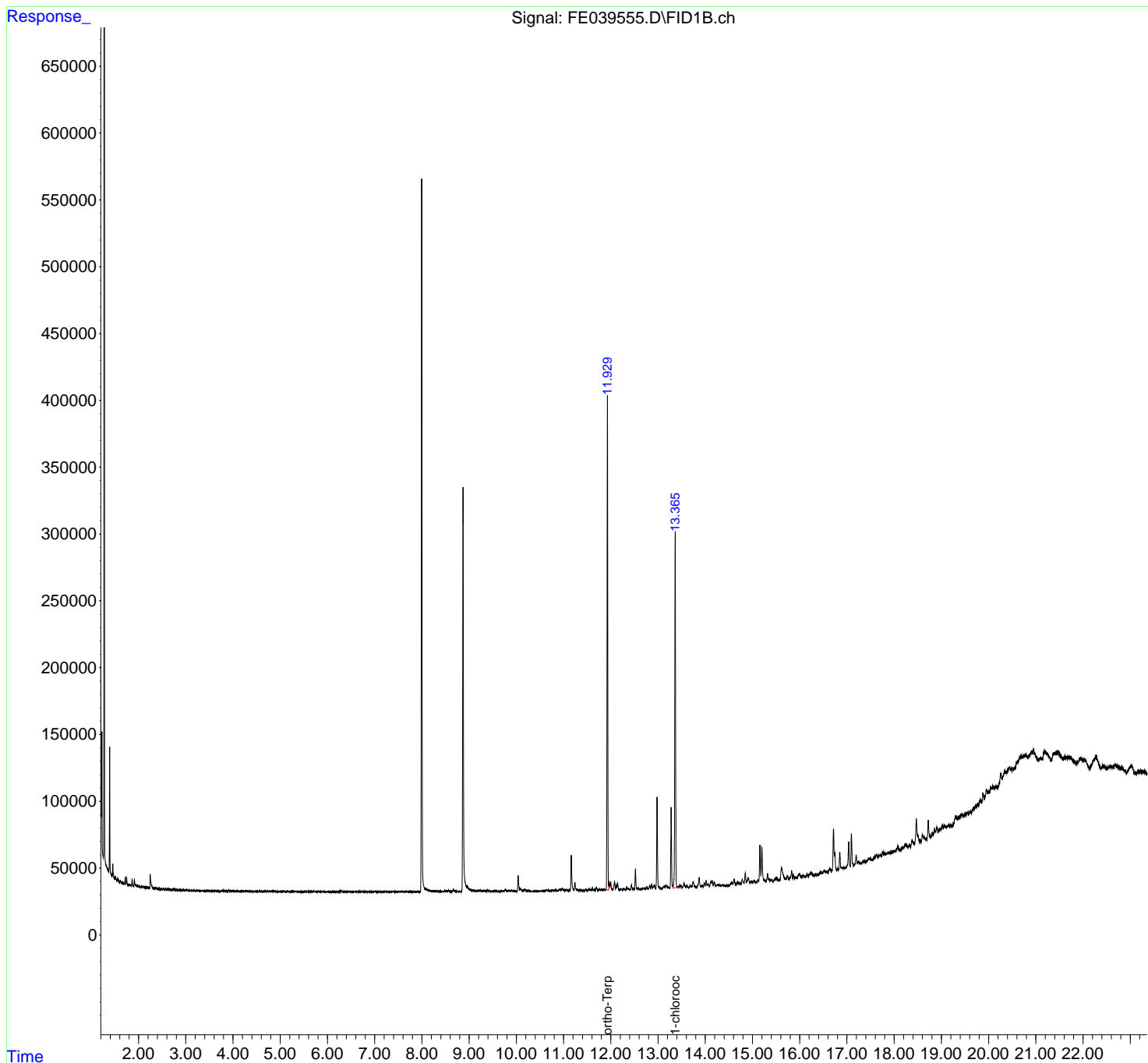
Instrument :
 FID_E
ClientSampleId :
 TP-2-EPH-2

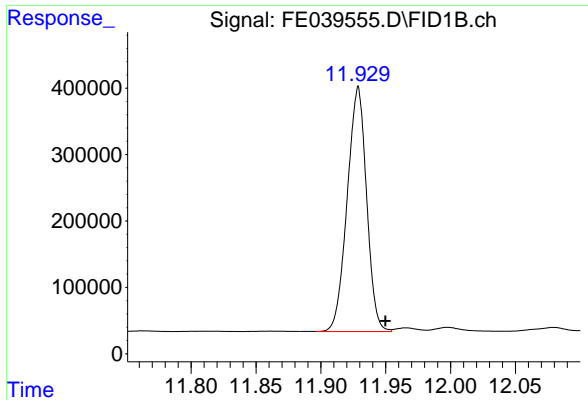
Manual Integrations
APPROVED

Reviewed By :Yogesh Patel 12/30/2022
 Supervised By :Ankita Jodhani 12/30/2022

Integration File: autoint1.e
 Quant Time: Dec 30 05:26:17 2022
 Quant Method : Z:\pestpcbsrv\HPCHEM1\FID_E\methods\Aliphatic EPH 121722.M
 Quant Title : GC Extractables
 QLast Update : Sat Dec 17 15:09:52 2022
 Response via : Initial Calibration
 Integrator: ChemStation

Volume Inj. : 1 ul
 Signal Phase : Rxi-1ms
 Signal Info : 20M x 0.18mm x 0.18um





#9 ortho-Terphenyl (SURR)

R.T.: 11.929 min
 Delta R.T.: -0.021 min
 Response: 3830271
 Conc: 25.67 ug/ml

Instrument :

FID_E

ClientSampleId :

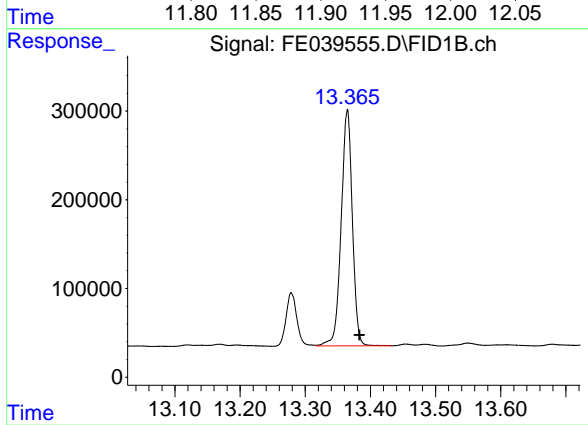
TP-2-EPH-2

Manual Integrations

APPROVED

Reviewed By :Yogesh Patel 12/30/2022

Supervised By :Ankita Jodhani 12/30/2022



#12 1-chlorooctadecane (SURR)

R.T.: 13.365 min
 Delta R.T.: -0.018 min
 Response: 3176721
 Conc: 27.60 ug/ml